

KAKA'AKO MAKAI PARKS

EIS SCOPING MEETING | APRIL 16, 2015

KAKA'AKO WATERFRONT PARK | GATEWAY PARK | KEWALO BASIN PARK



Overview

- **Purpose of Tonight's Meeting**
- **Project Background**
- **EIS Process**



Meeting Purpose



Goal & Essential Question:

Goal:

Ensure that the EIS addresses issues of concern.

Question:

What issues or concerns should be addressed in the Environmental Impact Statement?



Background



Kaka'ako Makai Parks



Legend
Kaka'ako Makai Parks



Kaka'ako Makai Parks Project Boundary: Gateway Park, Kaka'ako Waterfront Park, Kewalo Basin Park.



Objectives

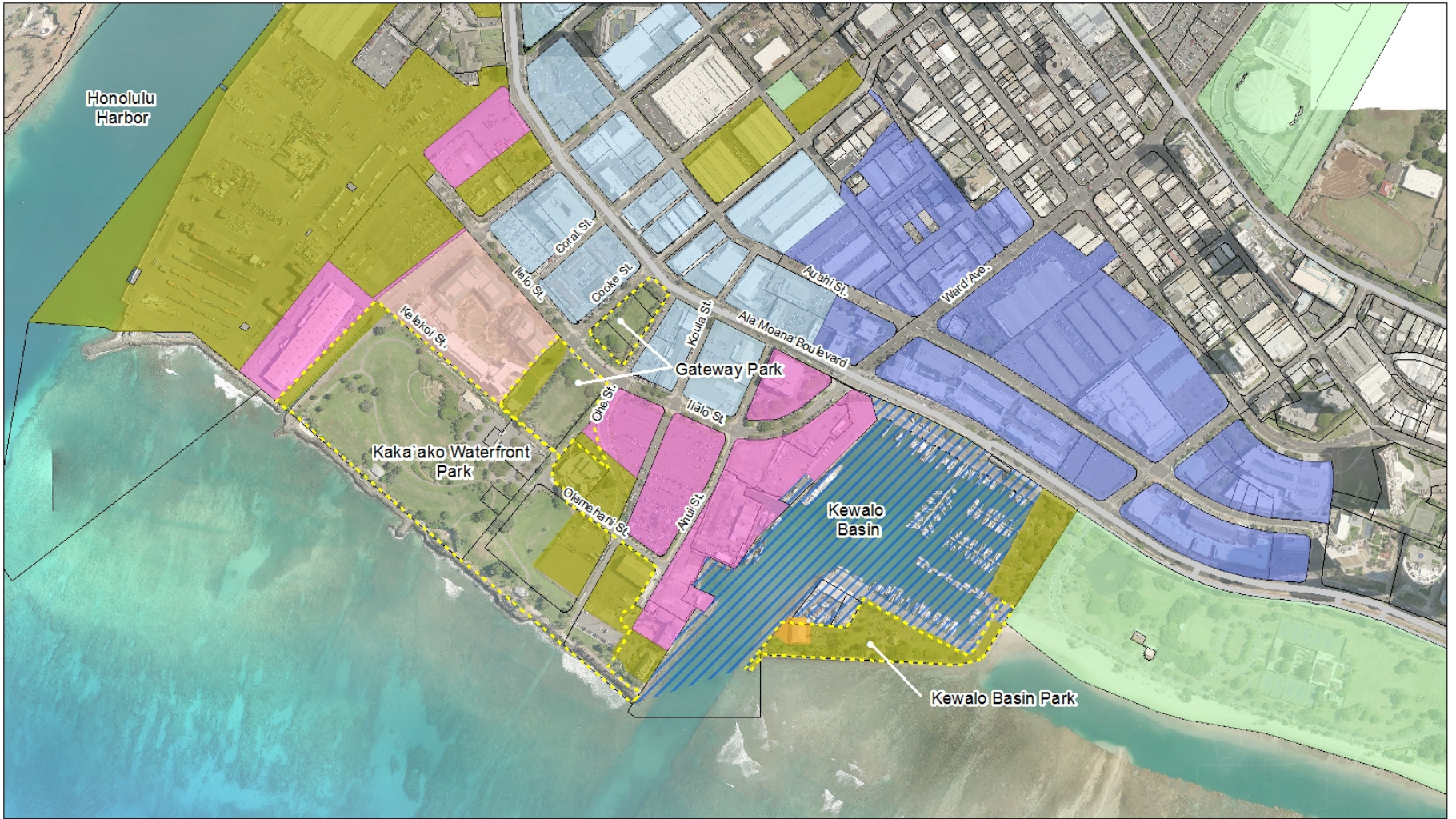
- Develop an active facilities master plan for the Kaka'ako Makai Parks
- Build upon the work completed in 2011 Conceptual Master Plan
- Take into account the many changes that have occurred in the area since then



COMPOSITE PROGRAM
 CONCEPT PLAN
 KAKA'AKO MAKAI
 HCDA
 NINE PACIFIC
 26 OCT 2010

2011 Conceptual Plan for Kaka'ako Makai Parks





Legend

- | | | |
|---|---|--|
| KAMEHAMEHA SCHOOLS | CITY AND COUNTY OF HONOLULU | OFFICE OF HAWAIIAN AFFAIRS |
| HAWAII COMM DEV AUTHORITY | LEASED BY HOWARD HUGHES CORP | HOWARD HUGHES CORP |
| JABSOM | | |
| KUPU | | |

Planning Process

- August – December, 2014
 - Research & information gathering
 - Idea generation
 - Public Open Houses August/Sept. and Oct/Nov.
 - Parks Peek
 - On-line engagement
- January – April, 2015
 - Begin technical studies and evaluation of ideas
 - Publish EISPN – comment period ends April 22nd

This is what we heard:

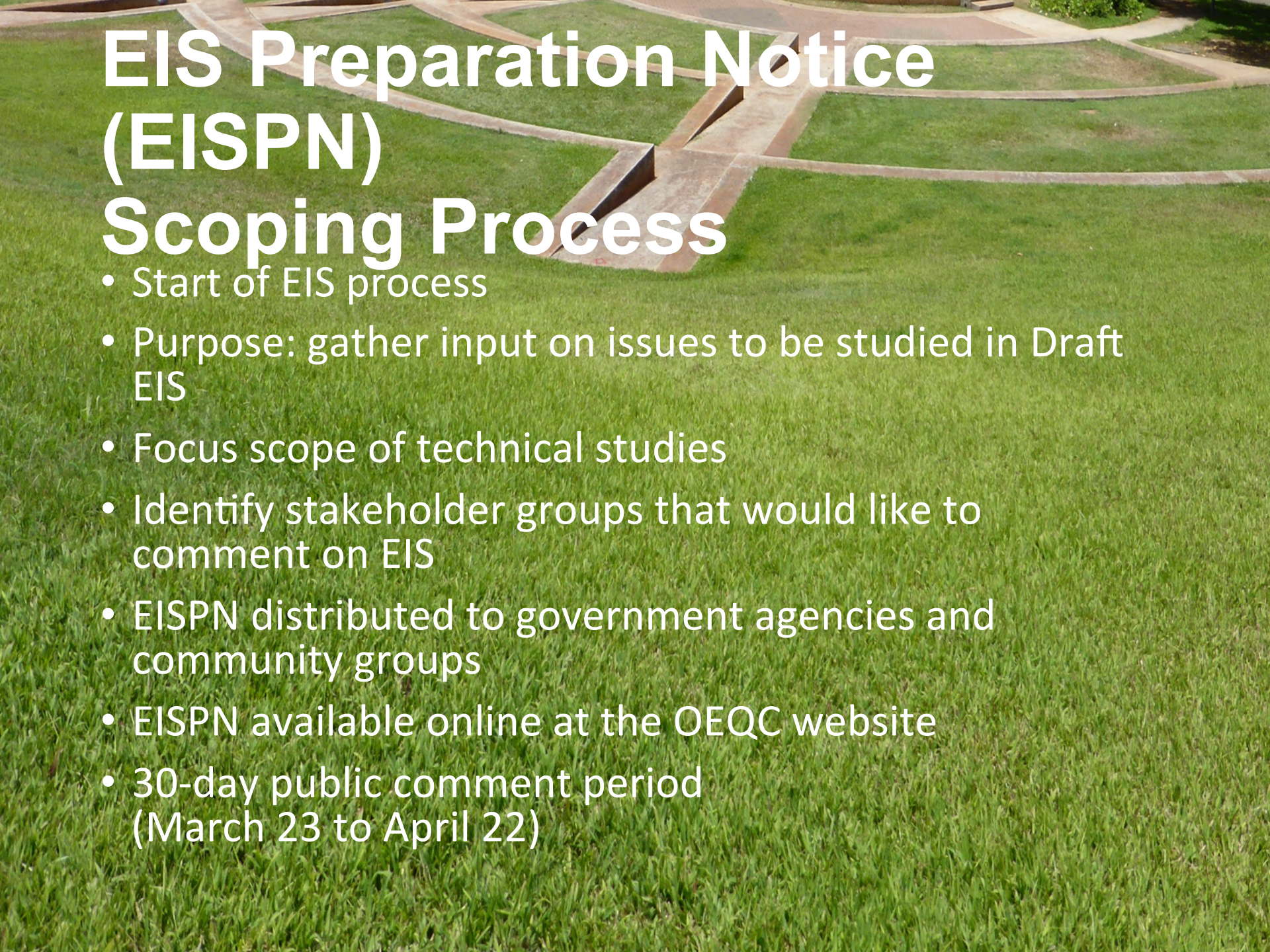
- Safety concerns are the #1 reason for not using the parks
- The parks are valued for their views and location relative to the urban environment
- Respect the Guiding Principles of the 2011 Conceptual Master Plan
- Top active uses with positive responses at Open House Events:
 - Sports activities - volleyball
 - Regular programmed food/entertainment activities
 - Family friendly activities



Environmental Impact Statement

Why an EIS?

- Use of State lands or funds triggers need for environmental compliance
- An EIS will be prepared rather than a less extensive EA
- EIS is not a permit – after the EIS separate actions will be required:
 - Makai Area plan update
 - Makai Area Rules update
 - SMA Use Permit
 - Development permit for specific uses



EIS Preparation Notice (EISPN) Scoping Process

- Start of EIS process
- Purpose: gather input on issues to be studied in Draft EIS
- Focus scope of technical studies
- Identify stakeholder groups that would like to comment on EIS
- EISPN distributed to government agencies and community groups
- EISPN available online at the OEQC website
- 30-day public comment period
(March 23 to April 22)

EIS Process

EISPN

- Define EIS scope
- Public comment/
input

Draft EIS

- Public review
and comment

Final EIS

Incorporates all
comments
Accepted by Governor

Technical Studies



- Biological Survey
- Acoustic Study
- Air Quality Study
- Economic Impact Analysis / Public Cost-Benefit Assessment
- Cultural/Archaeological Studies
- Preliminary Civil Engineering Report
- Traffic Impact Assessment Report

Draft EIS

- Prepared in accordance with Hawai'i laws and rules:
 - The Hawai'i EIS Law (Chapter 343, HRS)
 - EIS Law Administrative Rules (§11-200-17, HAR)
- Primary environmental review document
- Discusses potential impacts & mitigation measures
- Includes all technical studies
- Contains all EISPN comments and responses
- Available online at the OEQC website & all regional public libraries
- 45-day agency/public comment period (expected late-summer)

EIS Distribution for Review and Comment:

- Federal Agencies
- State Agencies
- City and County of Honolulu Agencies
- Elected Officials
- Community Groups & Individuals

Final EIS

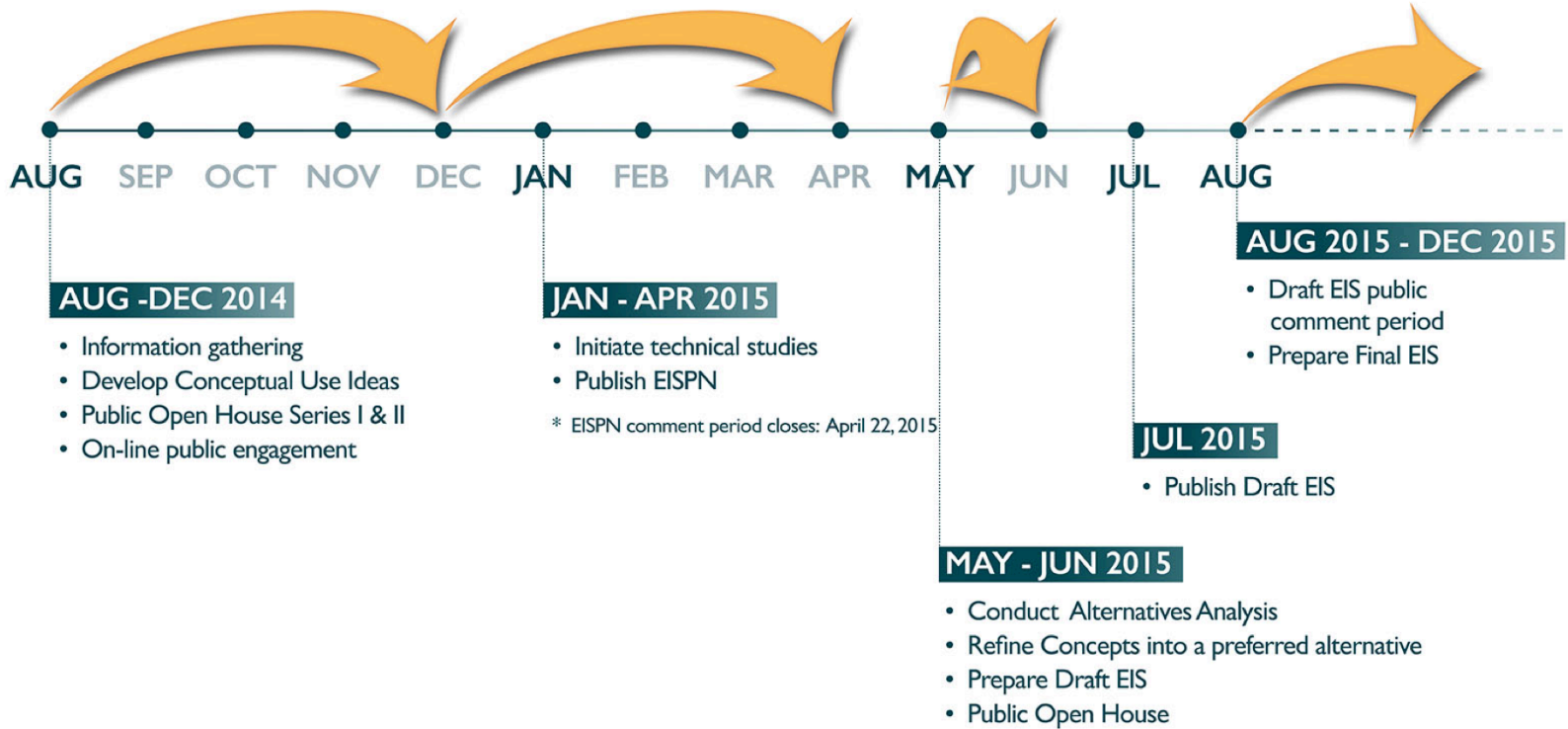
A tropical sunset scene with palm trees silhouetted against a bright orange sky over the ocean. The sun is low on the horizon, creating a warm, golden glow. The palm trees are dark against the bright sky, and the ocean is visible in the background.

- Draft EIS is revised in response to comments
- Contains all Draft EIS comments and responses
- The Governor is the Accepting Authority
- Final EIS is not a permit
- Disclosure document for HCDA decision-making

THE PLANNING PROCESS

2014

2015



EISPN Comments

- Please share your comments in writing with us tonight; or
- Provide them in writing to:
PBR HAWAII
Attn: Tom Schnell, AICP
1001 Bishop Street, Suite 650
Honolulu, HI 96813-3484
- A link to the EISPN: <http://dbedt.hawaii.gov/hcda/>



MAHALO!



EIS SCOPING MEETING | APRIL 16, 2015
KAKA'AKO WATERFRONT PARK | GATEWAY PARK | KEWALO BASIN PARK

