



# **HART Right-of-Entry Request**

Hawaii Community Development Authority  
May 4, 2016

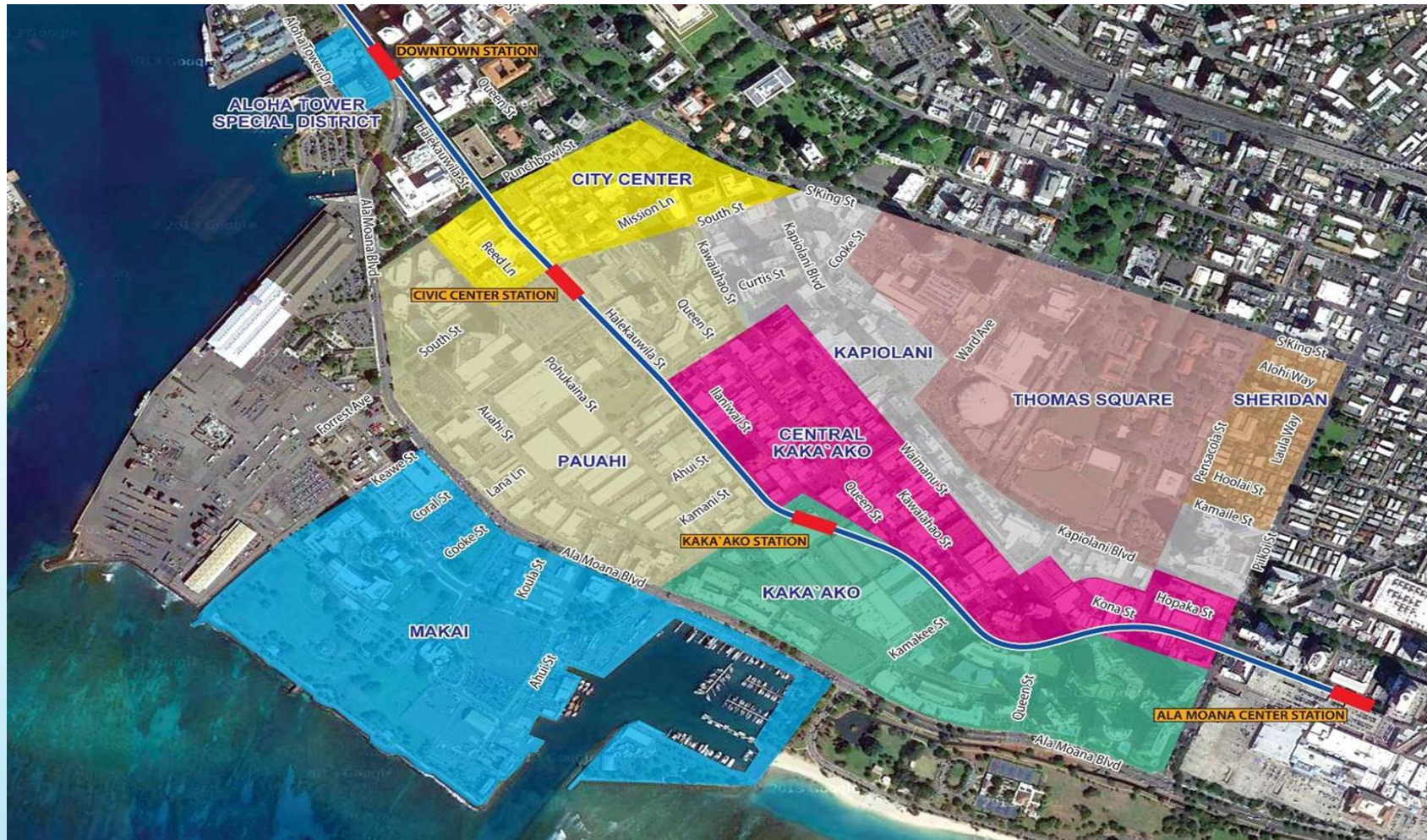


# 20 Miles – 21 Stations





# Kaka'ako Community Development District



# Pre-Construction and Construction Activities

- **July - August 2016: Preliminary investigations to confirm locations of existing utilities**
  - Pot hole trenching to validate utility locations on Halekauwila (approximately 17)
  - Dig open trenches
  - Use ground-penetrating radar
  - Paint markings on pavement
  - Obtain accurate information
  - Minimize surprises during construction
  - Minimize duration of construction



# Pre-Construction and Construction Activities

- **Mid 2017: Begin early construction activities**
  - Additional utilities investigations
  - Utility relocations
  - Drill “test” shaft foundations
  - Roadway widening
  - Significant lane closures
- **2018: Begin major construction activities**
  - Additional utilities relocations
  - Drill guideway shafts
  - Guideway columns
  - Station foundations
  - Significant lane closures

# Construction Impact Mitigation

- 30-day notification in advance of construction
- 14-day minimum notice for lane closures and other traffic impacts
- Provide access maps per the Maintenance of Traffic Plan (MOT)
- 7-day minimum notice and personal visit in advance of utility shut-offs and diversions
- Weekly construction updates by personal visit to each business, institution, or resident fronting a construction zone
- Work Zone Traffic Control

# Business Outreach Programs

## ■ Open for Business

- Special signage, collateral and programs
- Access to and from businesses maintained
- Timely construction information
- Coordination with businesses on deliveries, etc.
- Monthly business and community meetings



# Business Outreach Programs

## ■ HART Business Alliance

- Partnership with businesses along the corridor
- Tailored briefings and meetings
- Direct emails with information on traffic, construction and outreach programs
- Business development programs, marketing and social media workshops
- Proactively meeting with businesses in the Dillingham and City Center area
- Program partners include:
  - Hawaii Small Business Development Center
  - U.S. Small Business Administration – Hawaii District Office
  - Patsy T. Mink Center for Business and Leadership
  - Chamber of Commerce Hawaii





- Discount program open to all businesses within a half-mile of the route
- More than 100 businesses participating
- Discounts available at [www.ShopAndDineOnTheLine.com](http://www.ShopAndDineOnTheLine.com), through social media and printed brochures
- Partnerships with visitor attractions, Chamber of Commerce Hawaii, local trade unions, media and others to encourage support

# Stay Connected

- Monthly HART Facts Ad
- Public Access Television Program
- Weekly e-Blast
- Weekly Traffic Advisories
- Website and Social Media

PROJECT REVENUE STATUS As of March 1, 2016			
	Projections to Date <sup>1</sup>	Collected or Committed to Date	Percentage (of projections)
<b>REVENUE SOURCE:</b>			
Project Beginning Cash Balance (Dec. 2009)	(in millions) \$ 298	(in millions) \$ 298	100%
General Excise Tax (GET) Surcharge <sup>2</sup>	3,291	1,259	38%
Federal New Starts Funds	1,550	1,054	68%
Other Federal Transportation Funds	214	4	2%
Interest Income	2	9	—
<b>TOTAL</b>	<b>\$5,355</b>	<b>\$2,626</b>	<b>49%</b>
1 - Projections to date from the June 2012 Financial Plan. 2 - Total GET surcharge revenue collected since January 1, 2007, is \$1.64 billion (includes \$378 million collected before December 2009).			
PROJECT COST STATUS As of March 1, 2016			
	Current Budget <sup>1</sup>	Amount Committed <sup>2</sup>	Amount Expended <sup>3</sup>
<b>Guideway &amp; Track Elements</b>			
Stations, Stops, Terminals, Intermodal	(in millions) \$1,154	(in millions) \$ 550	(in millions) \$ 316
Support Facilities/Yards, Shops, Admin	419	302	5
Stewart & Special Conditions	115	115	103
Systems	1,018	780	557
Vehicles	249	234	41
	191	191	37
<b>SUB-TOTAL*</b>	<b>\$3,151</b>	<b>\$2,122</b>	<b>\$1,058</b>
Right-of-Way (ROW), Land, Existing Improvements	\$ 196	\$ 104	\$ 101
Professional Services (e.g., Planning and Design)	1,134	1,052	796
Contingency	475	7	1
Finance Charges	215	0	0
<b>SUB-TOTAL*</b>	<b>\$2,013</b>	<b>\$1,163</b>	<b>\$ 898</b>
<b>TOTAL*</b>	<b>\$5,164</b>	<b>\$3,286</b>	<b>\$1,956</b>
1 - Current Budget reflects the June 2012 Baseline Budget with increased Budget Transfers. 2 - Approved contract value. 3 - Portion of the work that has been paid. * All costs are rounded to the millions therefore subtotals may not add up to the amounts shown.			

**DID YOU KNOW?** HART expects that eventually there'll be more than 119,000 passenger trips on the rail system every weekday.



## HART Rapid Response:

- 24-Hour Project Hotline number 808-566-2299
- Email Inquiries: [info@HonoluluTransit.org](mailto:info@HonoluluTransit.org)
- Website Inquiries



# *Mahalo!*



*HONOLULU RAIL TRANSIT*

H O N O L U L U   R A I L   T R A N S I T   P R O J E C T

[www.HONOLULUTRANSIT.ORG](http://www.HONOLULUTRANSIT.ORG)

**HART**

HONOLULU AUTHORITY for RAPID TRANSPORTATION