

He'eia State Park Plan for He'eia NERR

Public Meeting
September 29, 2021

To join live polling: www.menti.com and enter code: 5984 9253

Aloha!

- Mahalo for making time to be here tonight, on behalf of HCDA and the consultant team!
- The Mentimeter link is being provided in the chat. www.menti.com code: 5984 9253
- If it's too hard to toggle between Zoom and Mentimeter, just join via Zoom.
- If you are having difficulty with Zoom or Mentimeter, please send a direct message in the chat to Selena Pang.
- If you have problems with connectivity or technology, don't worry! We can catch up with you after the meeting by email or phone.
- Please use common courtesy in your communications (verbal and chat).

HOW TO CHAT

The image shows a Zoom meeting interface. The main screen displays the word "PRESENT" in large, bold, black letters. A red circle with the number "1" is placed over the "Chat" icon in the bottom toolbar. A red arrow points from this icon to a red-bordered box containing the text: "Click here to access the chat function. It should show up to the right or in a pop-up box." To the right of the main screen, a "Zoom Group Chat" window is shown. A red circle with the number "2" is placed over the top of this window. A red arrow points from the text box to the chat input area, which contains the text: "Type message in box and click enter. You can also share files." The chat input area also shows a dropdown menu set to "Everyone", a "File" icon, and a "type message here..." text field. The bottom toolbar includes icons for Unmute, Start Video, Participants (6), Chat, Share Screen, Record, Reactions, and a red "Leave" button.

1 Click here to access the chat function. It should show up to the right or in a pop-up box.

2 Type message in box and click enter. You can also share files.

HOW TO “RAISE HAND” – COMPUTER

The screenshot shows a Zoom meeting interface. The main window displays a presentation slide with the text "PRESENTATION SLIDE" in large, bold, black letters. A red circle with the number "1" is placed over the "Reactions" icon in the bottom toolbar. A red arrow points from this icon to a red circle with the number "2" in the Reactions menu. The Reactions menu is open, showing various emoji icons. The "Raise Hand" icon, which is a hand with a raised index finger, is circled in red. Below the menu, the bottom toolbar contains icons for Unmute, Start Video, Participants (6), Chat, Share Screen, Record, Reactions, and a red "Leave" button. To the right of the main window, a "Participants (4)" list is visible, showing four participants: P1 (me), P3 (Host), P4 (Guest), and P2 (Guest).

1 Hover over the “Reactions” icon

2 Select the “Raise hand” icon.

PRESENTATION SLIDE

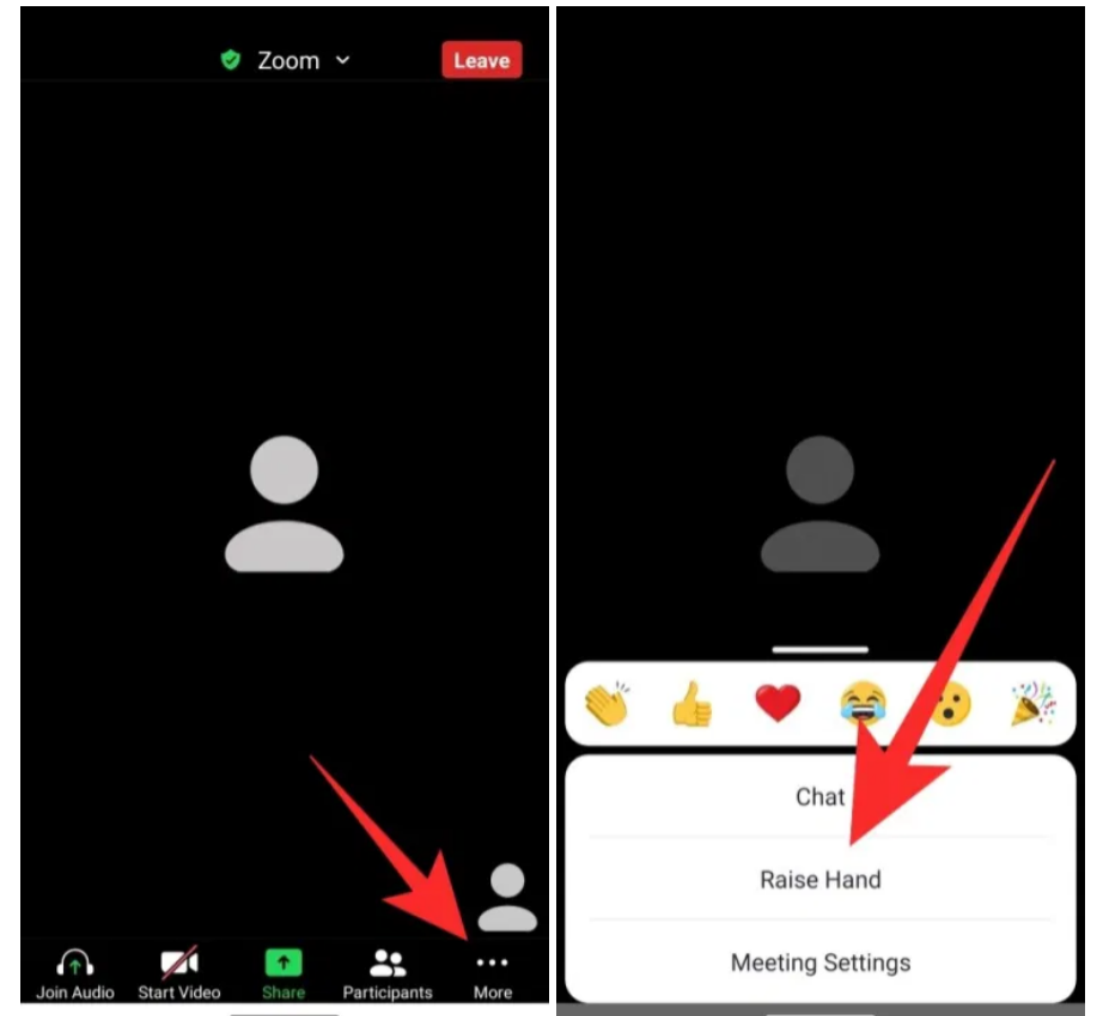
Participants (4)

- P1 Participant 1 (me)
- P3 Participant 3 (Host)
- P4 Participant 4 (Guest)
- P2 Participant 2 (Guest)

Unmute Start Video Participants Chat Share Screen Record Reactions Leave

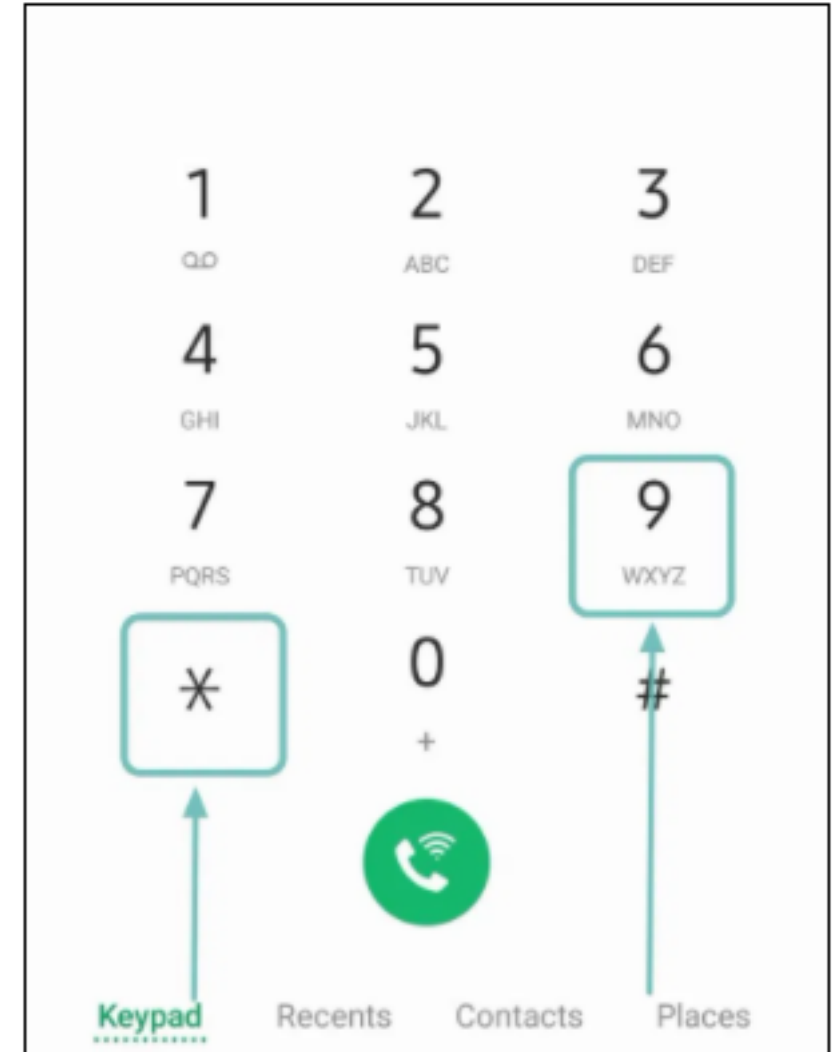
HOW TO “RAISE HAND” - PHONE APP

1. If toolbar not visible: tap screen to toggle on
2. Choose ...More
3. Click “raise hand”



HOW TO “RAISE HAND” - CALL

1. Open phone dial pad
2. Dial *9 to “raise hand”
3. Dial *9 again to “lower”



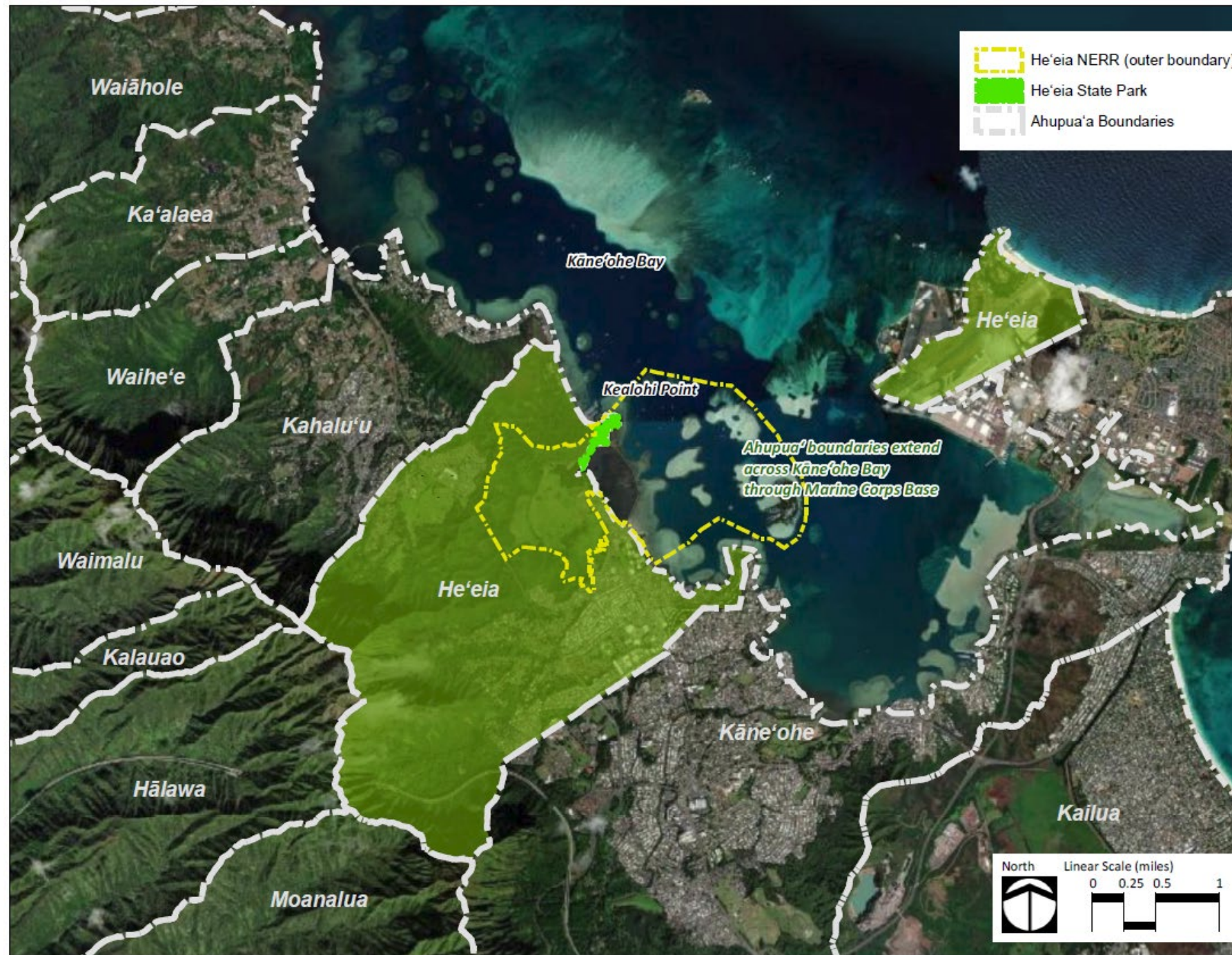
Meeting Purposes & Agenda

- Background
- He'eia NERR
 - Overview and Update
 - Community Input
 - Cultural and educational values
 - Stewardship and valued Park resources
- Planning for NERR at He'eia State Park
 - Regulatory environment and existing master plans
 - Existing park leases and agreements
- Community Input – Values and suggestions for He'eia
- Next steps

Act 166

5 The purpose of this Act is to appropriate funds for and
6 require the involvement of community members and organizations
7 in the development of a Heeia state park community-based long-
8 range plan for the Heeia National Estuarine Research Reserve
9 System.

Ahupua'a of He'eia



He'eia National Estuarine Research Reserve (NERR)

A manifestation of community-led stewardship of Ko'olaupoko

- 1992 – Kāne'ohe Bay Master Plan recommended the designation of a NERR
- 2014 – Gov. Abercrombie nominated He'eia
- 2016 – Management Plan and MOU finalized between partners
 - Ko'olaupoko Hawaiian Civic Club, Ko'olau Foundation, Paepae o He'eia, Kāko'o 'Ōiwi, Hawai'i Institute of Marine Biology (HIMB), HCDA, DLNR, NOAA
- 2017 – Pres. Obama officially designated the He'eia NERR
- 2018 – NERR staff hired as UH faculty through HIMB

He'eia National Estuarine Research Reserve (NERR)

- Multiple habitats in 1,385 acres
- Collaborative management with Native Hawaiian and Local community
- 7 co-management partners
- Administered through Hawai'i Institute of Marine Biology (HIMB)





Guided by our kūpuna

We honor the knowledge, wisdom, and life experiences of elders in our policies, practices, and work.

He'eia NERR goal:

An aerial photograph of the He'eia National Estuarine Research Reserve. The image shows a large, dark, irregularly shaped pond or lagoon in the foreground. To the left of the pond, there is a small, rectangular, light-colored structure, possibly a breakwater or a small island. The pond is surrounded by lush green vegetation and a small town or village with many buildings. In the background, there are large, rugged mountains with steep, green slopes. The sky is clear and blue.

To support community-led efforts
to engage in ahupua'a
restoration

Over-arching research question:

How does ahupua'a restoration effect ecosystem services?

The framework for the He'eia NERR (Winter et al. 2020)

Blends Indigenous and conventional science to:

- A. Conduct culturally-appropriate research
- B. Collaboratively develop research
- C. Collaboratively produce new knowledge
- D. Inform policy through a sharing of knowledge

Copyright © 2020 by the author(s). Published here under license by the Resilience Alliance.

Winter, K. B., Y. M. Rii, F. A. W. L. Reppun, K. DeLaforge Hintzen, R. A. Alegado, B. W. Bowen, L. L. Bremer, M. Coffman, J. L. Deenik, M. J. Donahue, K. A. Falinski, K. Frank, E. C. Franklin, N. Kurashima, N. Kekuwa Lincoln, E. M. P. Madin, M. A. McManus, C. E. Nelson, R. Okano, A. Olegario, P. Pascua, K. L. L. Oleson, M. R. Price, M. J. Rivera, K. S. Rodgers, T. Ticktin, C. L. Sabine, C. M. Smith, A. Hewett, R. Kaluhiwa, M. Cypher, B. Thomas, J.-A. Leong, K. Kekuwa, J. Tanimoto, K. Kukea-Shultz, A. Kawelo, K. Kotubetey, B. J. Neilson, T. S. Lee, and R. J. Toonen. 2020. Collaborative research to inform adaptive comanagement: a framework for the He'eia National Estuarine Research Reserve. *Ecology and Society* 25(4):15. <https://doi.org/10.5751/ES-11895-250415>

Insight

Collaborative research to inform adaptive comanagement: a framework for the He'eia National Estuarine Research Reserve

Kawika B. Winter^{1,2,3,4}, Yoshimi M. Rii^{1,2}, Frederick A. W. L. Reppun^{1,2}, Katy DeLaforge Hintzen^{2,5}, Rosanna A. Alegado^{5,6}, Brian W. Bowen¹, Leah L. Bremer^{7,8}, Makena Coffman⁹, Jonathan L. Deenik¹⁰, Megan J. Donahue¹, Kim A. Falinski¹¹, Kiana Frank¹², Erik C. Franklin¹, Natalie Kurashima¹³, Noa Kekuwa Lincoln¹⁰, Elizabeth M. P. Madin¹, Margaret A. McManus⁶, Craig E. Nelson^{5,6,14}, Ryan Okano¹⁵, Anthony Olegario¹⁵, Pua'ala Pascua¹⁶, Kirsten L. L. Oleson³, Melissa R. Price³, Malia Ana J. Rivera¹, Kuulei S. Rodgers¹, Tamara Ticktin¹⁷, Christopher L. Sabine⁶, Celia M. Smith¹⁷, Alice Hewett¹⁸, Rocky Kaluhiwa¹⁹, Māhealani Cypher²⁰, Bill Thomas²¹, Jo-Ann Leong¹, Kristina Kekuwa²², Jean Tanimoto²¹, Kānekoa Kukea-Shultz¹⁸, A. Hū'ilei Kawelo²³, Keli'i Kotubetey²³, Brian J. Neilson¹⁵, Tina S. Lee^{21,24} and Robert J. Toonen¹



He'eia NERR's research priorities (Winter et al. 2020a)

- Historical ecology
- Habitat health
- Biological indicators
- Restoration ecology
- Economics
- Climate change
- Ahupua'a management
- Human health and well-being



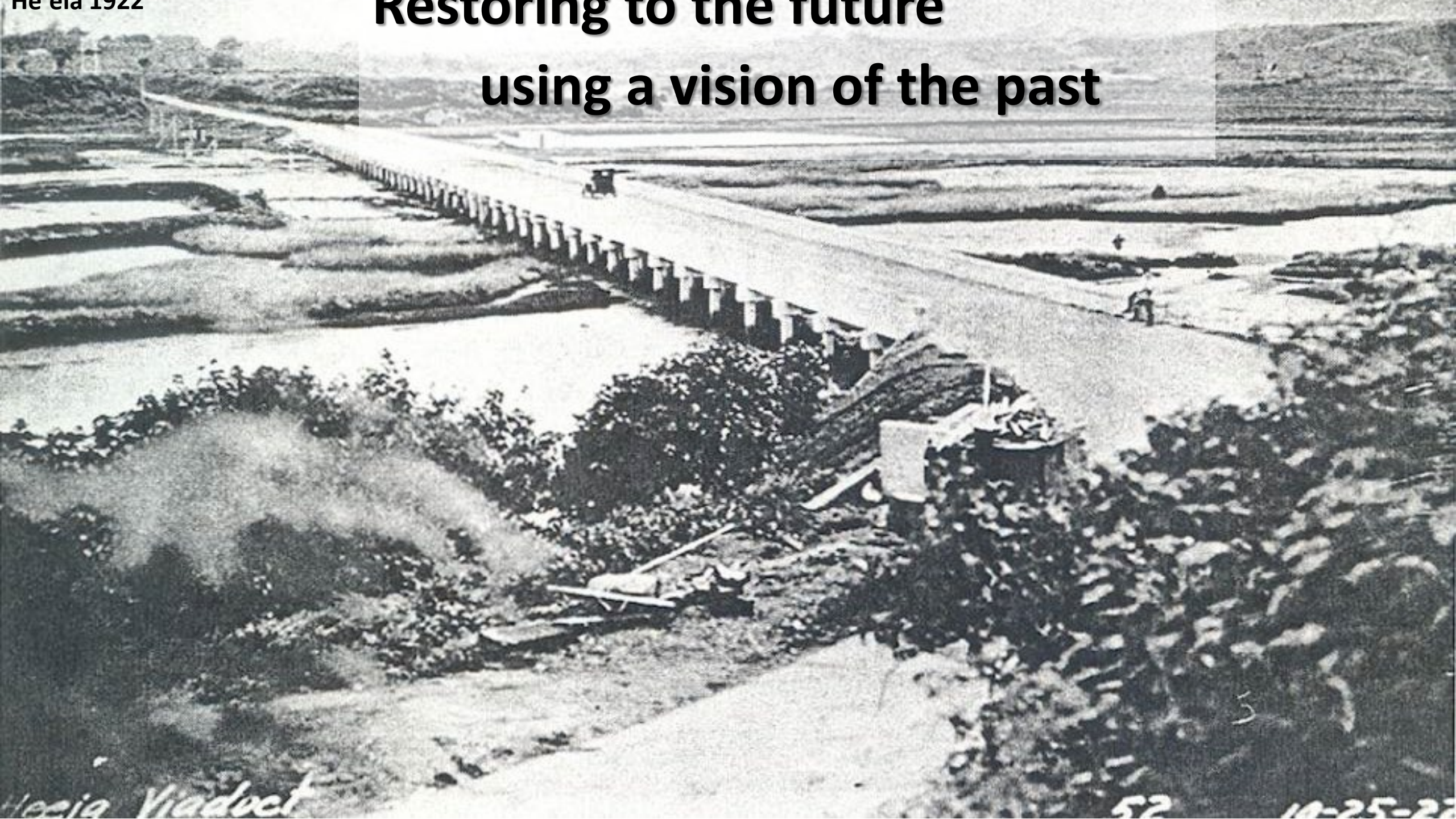
Kelle Freel

He`eia – then and now



Restoring to the future

using a vision of the past



Heila Viaduct

Supporting the removal of invasive species



Restoration of Hawaiian agro-ecology systems



Restoration of Hawaiian aquaculture systems



VIRTUAL COMMUNITY MEETING
HE'EIA NATIONAL ESTUARINE RESEARCH RESERVE (HNERR)

Our endangered species are returning



VIRTUAL COMMUNITY MEETING
HE'EIA NATIONAL ESTUARINE RESEARCH RESERVE (HNERR)

Incorporating the He'eia NERR into He'eia State Park

Educational hālau

- School groups
- Visitors

Pono stewardship

- Ecologically significant areas (riparian cooridor)
- Culturally significant areas (iwi kūpuna burials)



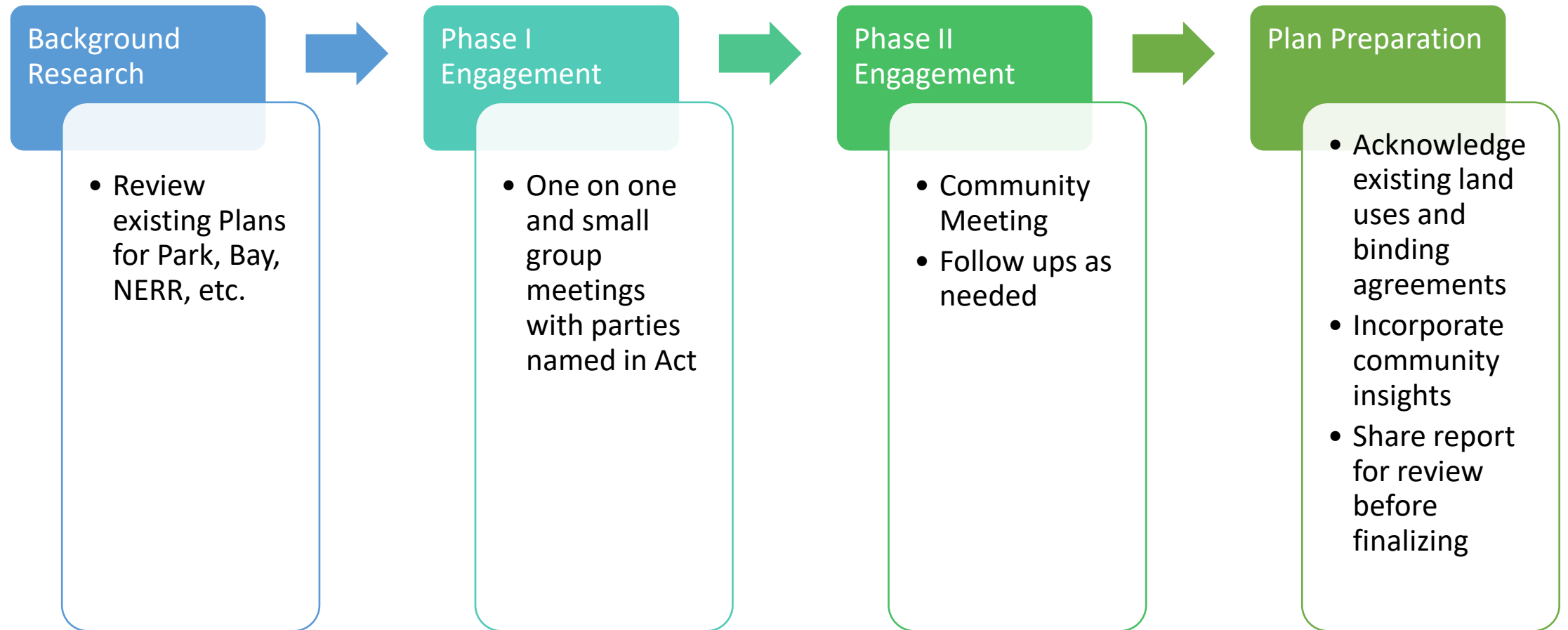
Educational Hālau - What's Your Mana'o?

- What cultural values should be embodied in the Educational Hālau?
- What are the most important things we should teach children? The general public? Visitors?

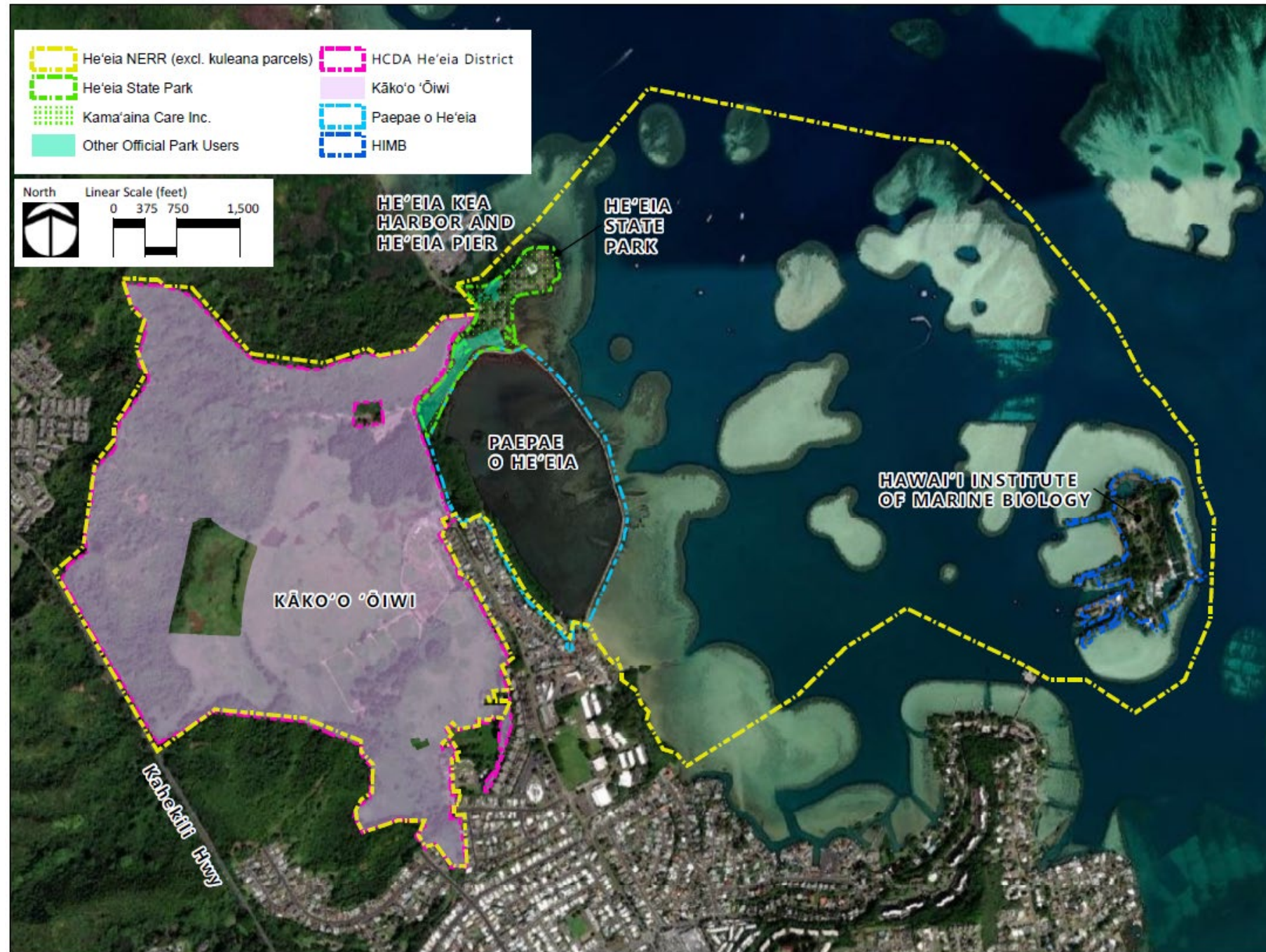
Stewardship - What's Your Mana'o?

- What is pono stewardship in the ahupua'a of He'eia?
- What are the most ecologically sensitive areas of the park?
- What are the most culturally sensitive areas of the park?

Planning for NERR at He'eia State Park



Background Research Outcomes



Background Research Outcomes



He'eia State Park Leases and Legally-Binding Agreements

Park Partner	Partnership Type	Approx. Area of Use	Partner Since	Renewal	Reviewing Entity
Kama'aina Care Inc. dba Kama'aina Kids (KK)	Holds agreement to oversee management of He'eia State Park.	Default kuleana of park lands, if not explicitly designated to another partner.	2010	25-year lease.	DLNR Division of State Parks
Hui 'o Ko'olaupoko (HOK)	Adopt-A-Park partner	5.7 ac	2012	Annual (renew or reject). Not anticipated to renew in June 2022.	BLNR
Kāne'ohe Cultural Foundation (KCF)	Curator (wa'a tradition outreach/education)	1 ac staging area	2013	5-year (renew or reject). Recently renewed.	DLNR Division of State Parks
Puakea Foundation (PFH)	Curator (kālai wa'a outreach/education)	0.5 ac	2002	5-year (renew or reject). Recently renewed (January 2021).	DLNR Division of State Parks
The Nature Conservancy (TNC)	Collaborator with DLNR (DAR and DOCARE) and NERRS	Less than 0.5 ac (parking, trailer, and scuba storage)	2012	1- or 2-year (review or reject).	KK

Phase I Engagement Outcomes

- One on one conversations and group meetings with those named in Act
- Worked with stakeholders on potential administrative pathway for adding an educational hālau in the park

Closing thoughts - What's Your Mana'o?

- What values do you think should be further explored for He'eia?
- What types of programs reflect those values?
- Fill in the blank: He'eia State Park is a place where _____

Next Steps

- Document Meeting & Meeting Outcomes
- Plan Report
- Public Review
- Final Report

Mahalo

- Do you have additional comments? Please send them to PBR HAWAII at: ccullison@pbrhawaii.com by October 15, 2021.
- Visit the project website: <https://dbedt.hawaii.gov/hcda/heeia-national-estuarine-research-reserve/>