

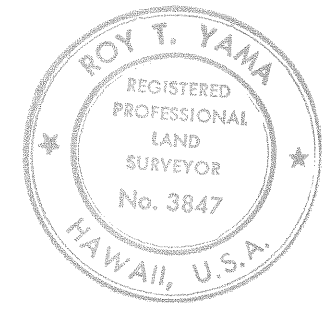
APP 10: MAP 3

TRUE NORTH  
SCALE: 1 IN. = 100 FT.

# LAND COURT STATE OF HAWAII LAND COURT APPLICATION 70

SUBDIVISION OF LOT 8  
AS SHOWN ON MAP 2  
INTO LOTS 9 TO 15, INCLUSIVE  
AND DESIGNATION OF EASEMENT 1  
AFFECTING LOTS 10, 11 AND 12  
AT WAIHAOLE, KOOLAUPOKO, OAHU, HAWAII

KAWAIAHAO PLAZA  
507 S KING STREET SUITE 300  
HONOLULU, HAWAII  
OCTOBER 20, 1985



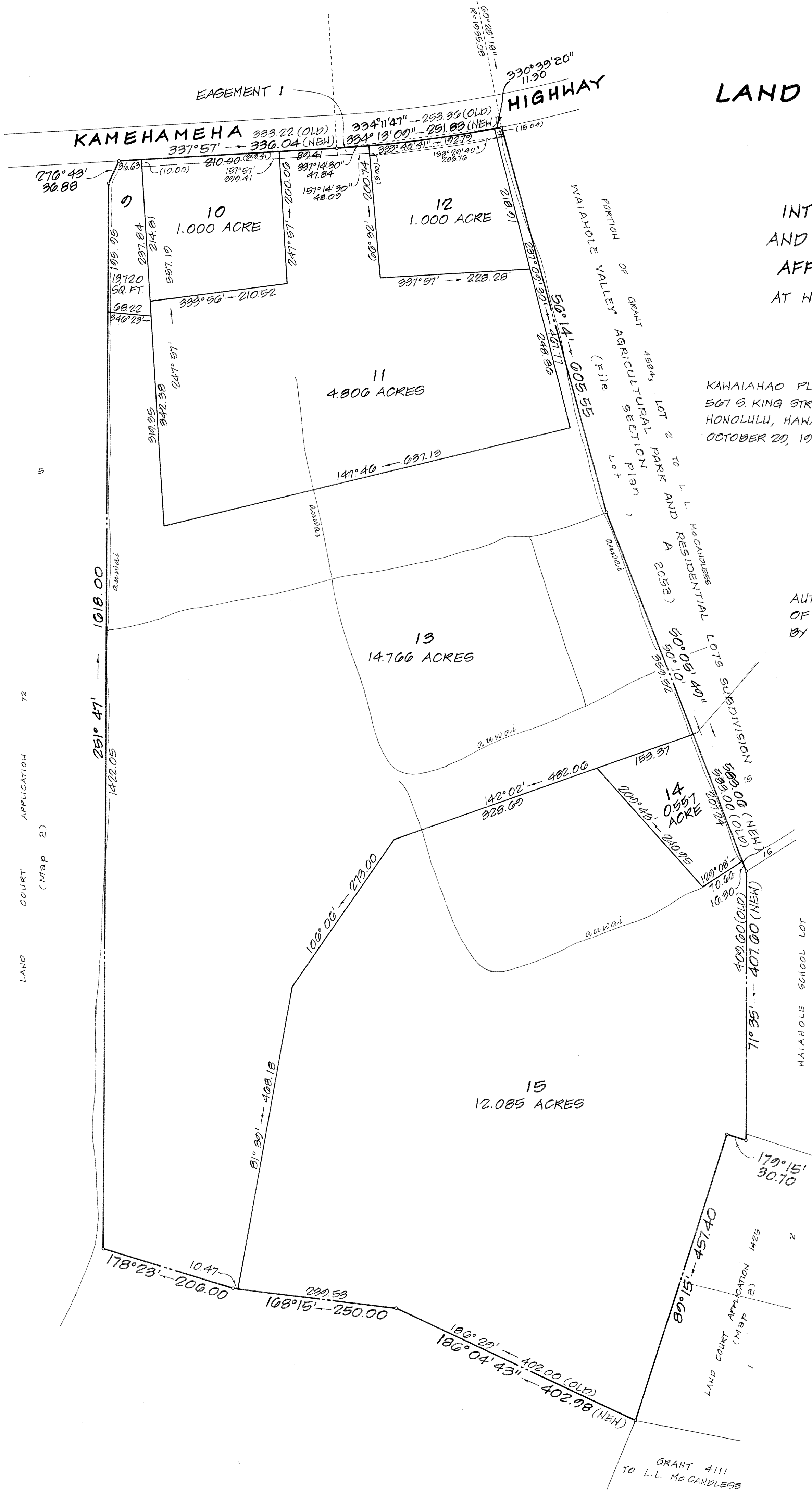
PAREN, INC.  
dba PARK ENGINEERING

*Roy T. Yama*  
REGISTERED PROFESSIONAL SURVEYOR  
CERTIFICATE NUMBER 3847  
LAND COURT SURVEYOR  
CERTIFICATE NUMBER 170

OWNER: HOUSING FINANCE AND DEVELOPMENT CORPORATION  
OWNER'S CERTIFICATE OF TITLE: 195898

AUTHORIZED AND APPROVED BY ORDER OF THE JUDGE  
OF THE LAND COURT DATED OCTOBER 7, 1991  
BY ORDER OF THE COURT.

*Sybilte Rymia*  
DEPUTY REGISTRAR OF THE LAND COURT



NOTE:  
AREA OF EASEMENT 1 = 6555 SQ. FT.

Filed September 5, 1991  
Katherine Weisbayer, Clerk

APP 10: MAP 3