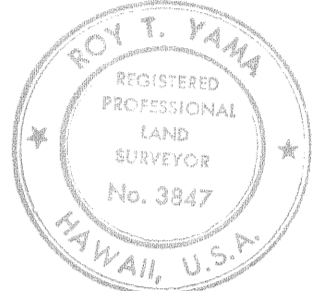


LAND COURT STATE OF HAWAII LAND COURT APPLICATION 72

CONSOLIDATION OF LOTS 5, 6, AND 7
AS SHOWN ON MAP 2
AND RESUBDIVISION OF SAID CONSOLIDATION
INTO LOTS 8 TO 22, INCLUSIVE
AT WAIHOLE, KOOLAUPOKO, OAHU, HAWAII

KAHAIHAHO PLAZA
507 S. KING STREET SUITE 300
HONOLULU, HAWAII
OCTOBER 29, 1985



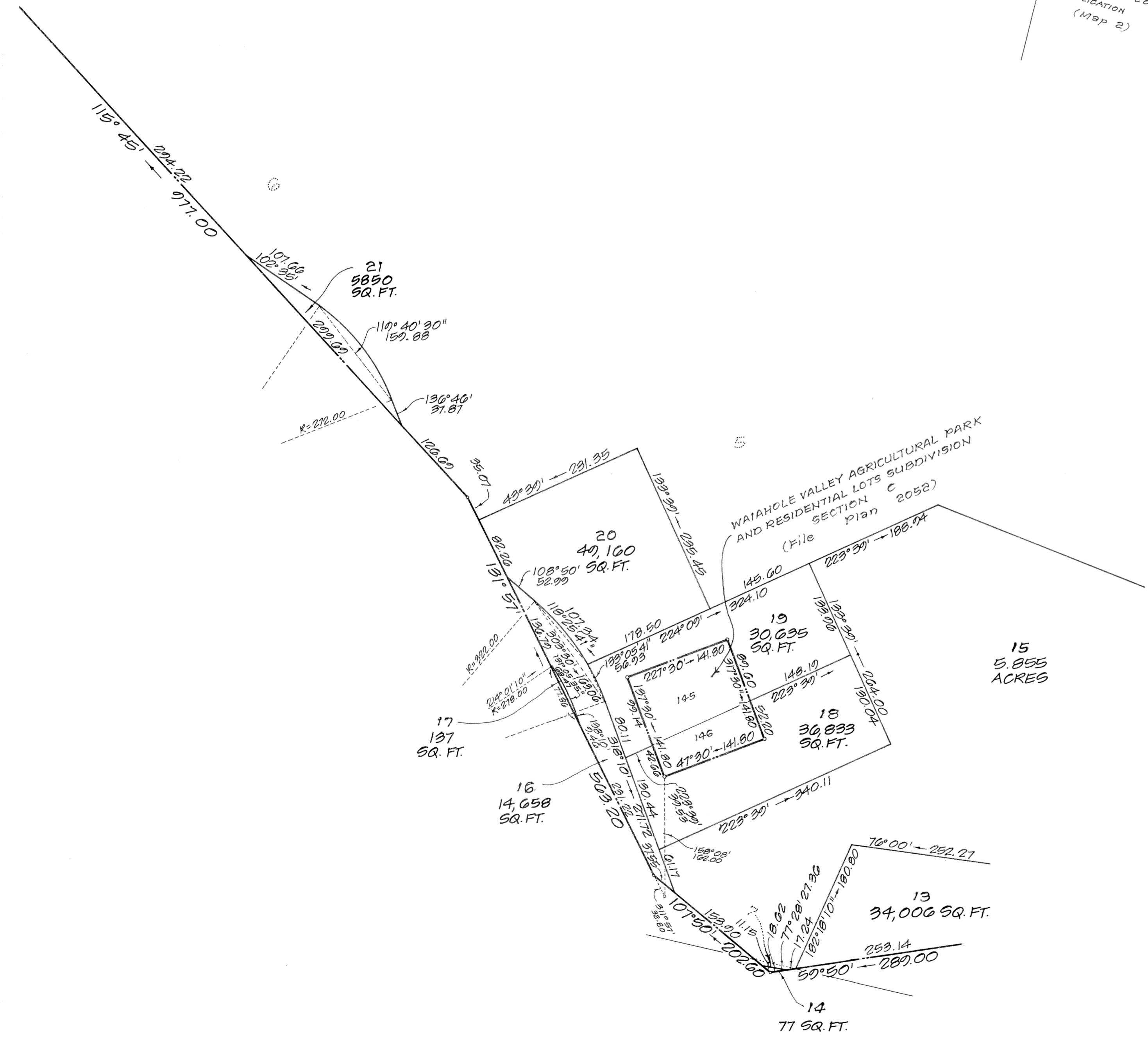
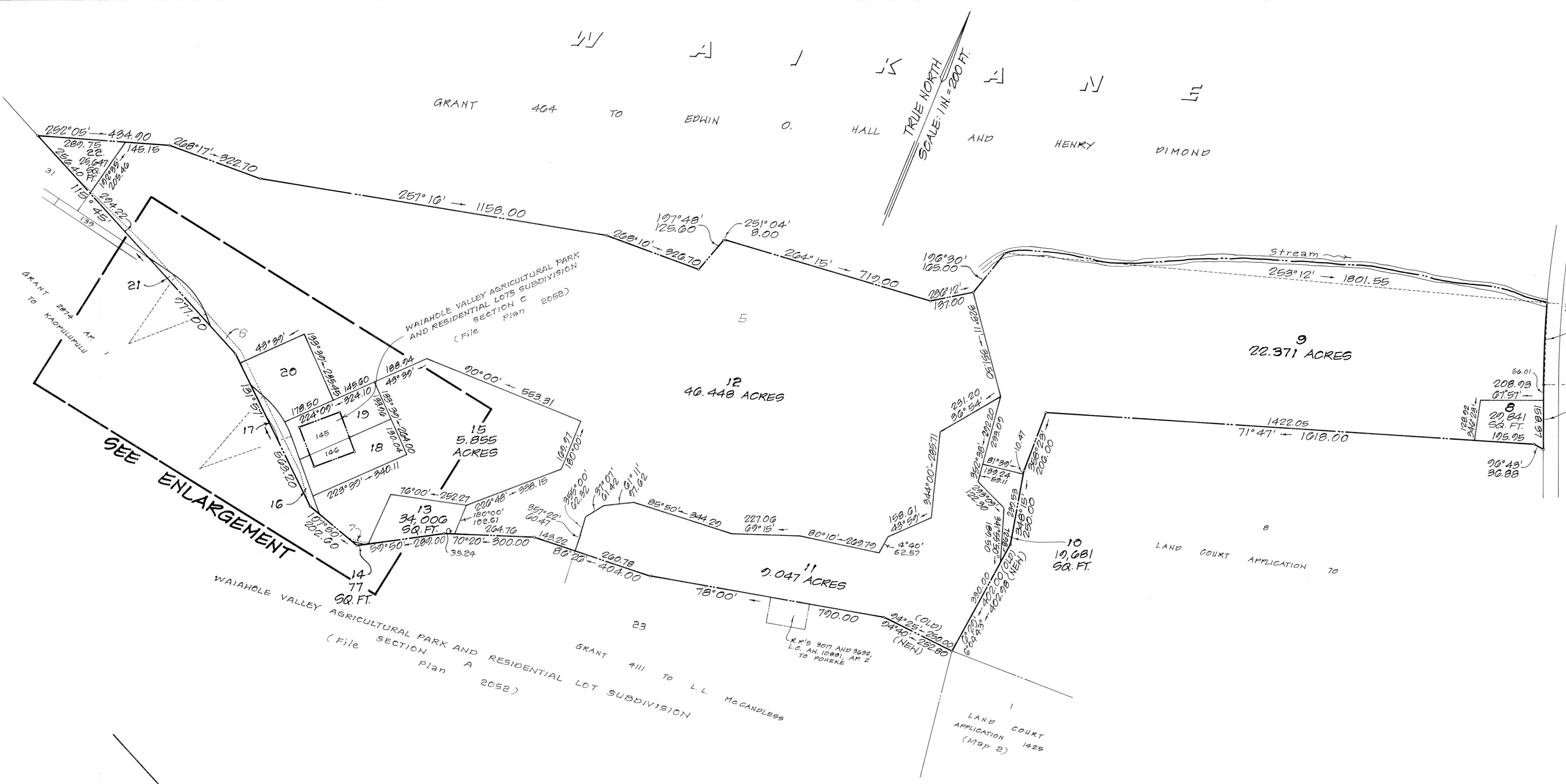
PAREN, INC.
d/b/a PARK ENGINEERING

Roy T. Yama
REGISTERED PROFESSIONAL SURVEYOR
CERTIFICATE NUMBER 3347
LAND COURT SURVEYOR
CERTIFICATE NUMBER 179

OWNER: Housing Finance and Development Corporation
OWNER'S CERTIFICATES OF TITLE: 195898 (Lot 5)
369437 (Lots 6 and 7)

AUTHORIZED AND APPROVED BY ORDER OF THE JUDGE
OF THE LAND COURT DATED NOVEMBER 8, 1991
BY ORDER OF THE COURT.

Lynette Ajima
DEPUTY REGISTRAR OF THE LAND COURT



ENLARGEMENT
SCALE: 1 IN. = 100 FT.

Filed September 5, 1991
Kathleen Wiltschko, Clerk