

KAKAAKO PUMPING STATION

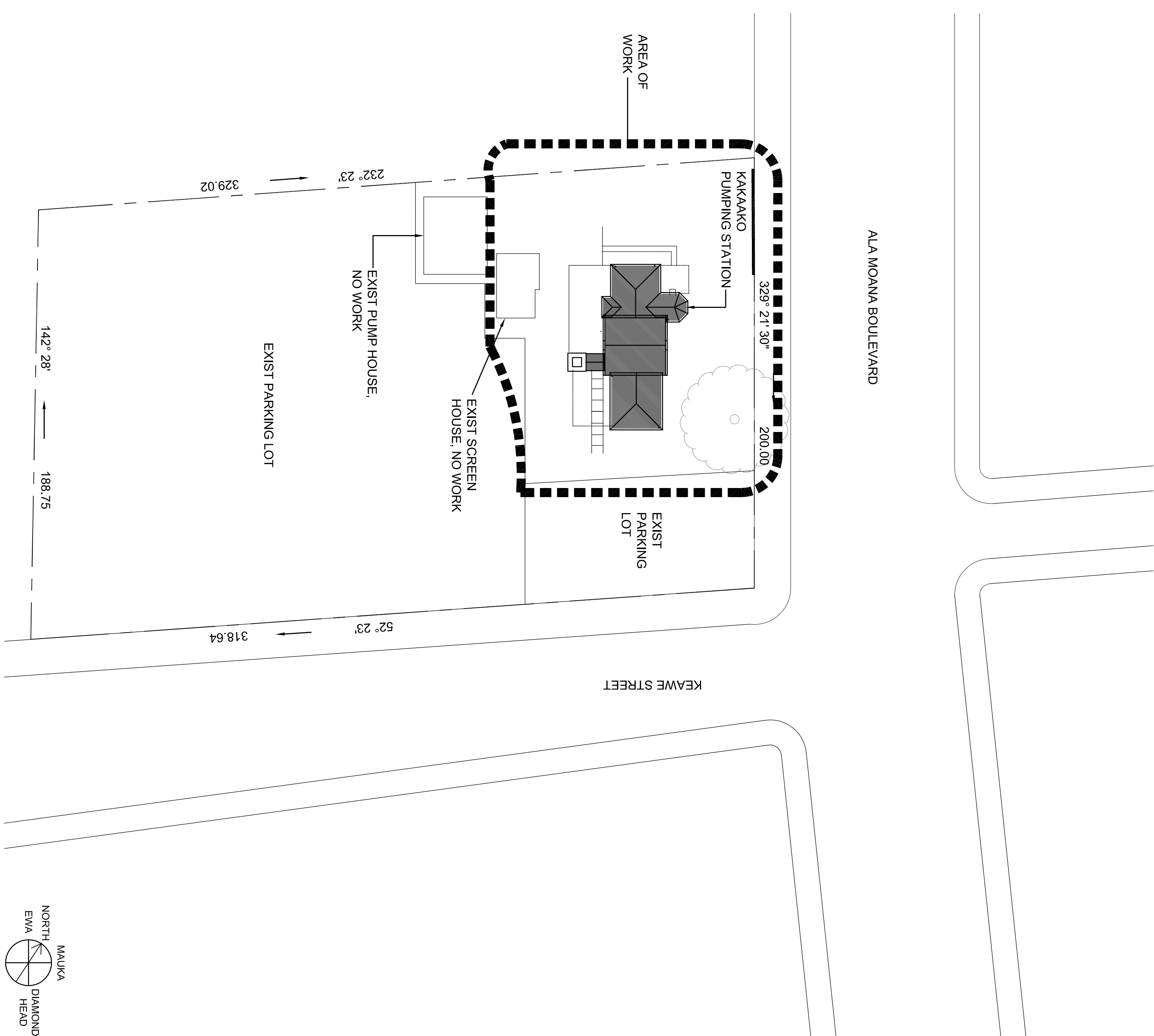
IMPROVEMENTS

653 ALA MOANA BOULEVARD, HONOLULU, HAWAII

TMK: 2-1-15: 63

ABBREVIATIONS

AB	ANCHOR BOLT	PTDR	PAPER TOWEL DISPENSER
AC	ASPHALTIC CONCRETE	PTN	PARTITION
ACC	AIR CONDITIONING	QT	QUARRY TILE
ACC	ACCESSIBLE	QTR	QUARTER
ACOUS	ACOUSTIC	R	RADIUS RISER
AD	AREA DRAIN	RD	ROOF DRAIN
AJ	ADJUSTABLE ADJACENT	RECP	RECEPTACLE
AGGR	AGGREGATE	REF	REFRIGERATOR; REFERENCE
ALUM	ALUMINUM	REINF	REINFORCE
ALT	ALTERNATE	RENO	RENOVATED
APPROX	APPROXIMATE	RESIL	RESILIENT
ARCH	ARCHITECTURAL	REG	REGISTER
ASB	ASBESTOS	RM	ROOM
ASPH	ASPHALT	RND	ROUND
BD	BOARD	RO	ROUGH OPENING
BLDG	BUILDING	RWD	REDWOOD
BM	BEAM	RWL	RAIN WATER LEADER
BOT	BOTTOM	S	SOUTH
BRKT	BRACKET	SC	SOLID CORE
BUR	BUILT UP ROOFING	SCD	SEAT COVER DISPENSER
CAB	CABINET	SCDN	SCHEDULE
CBB	CEMENTIOUS BACKER BOARD	SCRN	SCREEN
CEM	CEMENT	SD	SOAP DISPENSER
CER	CERAMIC	SECT	SECTION
CI	CAST IRON	SELV	SHELVING
CLG	CEILING	SHR	SHOWER
CLQ	CLOSED	SHT	SHEET
CLR	CLEAR	SIM	SMILAR
CMU	CONCRETE MASONRY UNIT	SLNT	SLANT
CONTR	COUNTER	SLDG	SLIDING
CO	CLEANOUT	SNL	SANITARY NAPKIN DISPENSER
COND	CONDITION	INSUL	INSULATION
COL	COLUMN	INT	INTERIOR
CONC	CONCRETE	JAL	JALOUSIE
CONN	CONNECT	JAN	JANITOR
CONSTR	CONSTRUCTION	KP	KITCHEN
CONT	CONTINUOUS	KOP	KNOCK OUT PANEL
CONTR	CONTRACTOR	LAM	LAMINATE
COOR	CORRIDOR	LAV	LAVATORY
CT	CERAMIC TILE CENTER	LR	LIVING ROOM
CTR	CENTER	LT	LIGHT
CSK	COUNTER SUNK	LH	LIGHT
D	DEEP	MACH	MACHINE
DBL	DOUBLE	MAX	MAXIMUM
DEMO	DEMOLITION	MC	MEDICINE CABINET
DEPT	DEPARTMENT	MECH	MECHANICAL
DET	DETAIL	MEMB	MEMBRANE
DET	DETAIL	MNT	MOUNT
DM	DIAMETER	MTL	METAL
DM	DIAMETER	MTR	MANUFACTURER
DISP	DISPENSER	MFR	MANUFACTURER
DR	DR	MH	MANHOLE
DR	DR	MN	MINIMUM
DR	DR	MIR	MIRROR
DS	DOWNSPOUT	MISC	MISCELLANEOUS
DSP	DRY STANDPIPE DRAWING	MO	MASONRY OPENING
DWG	DRAWING	MTD	MOUNTED
DWR	DRAWER	MUL	MULLION
E	EAST	MULL	MULLION
EA	EXPANSION JOINT	MOP	MOP RACK
EJ	ELEVATION	MOPR	MOP RACK
EL	ELEVATION	N	NORTH
ELEG	ELECTRICAL	NIC	NOT IN CONTRACT
EMER	EMERGENCY	NO	NO
ENCL	ENCLOSURE	NOI	NOMINAL
EP	ELECTRICAL PANELBOARD	NTS	NOT TO SCALE
EPS	EXPANDED POLYSTYRENE BOARD	OA	OVERALL
EQ	EQUAL	OGL	OBSCURE GLASS
EQUIP	EQUIPMENT	OC	ON CENTER
EXP	ELECTRIC WATER COOLER	OD	OUTSIDE DIAMETER (DIM)
EXP	EXPANSION; EXPOSED	OFICI	OWNER FURNISHED/ CONTRACTOR INSTALLED
EXT	EXISTING	OFIOI	OWNER FURNISHED/ OWNER INSTALLED
EXT	EXTERIOR	OFF	OFFICE
FA	FIRE ALARM	OH	OVERHANG
FB	FLAT BAR	OPNG	OPENING
FD	FLOOR DRAIN	OPNG	OPENING
FDN	FOUNDATION	OPP	OPPOSITE
FE	FIRE EXTINGUISHER	PC	PIECE
FE	FIRE EXTINGUISHER CABINET	PL GL	PLATE GLASS
FHC	FIRE HOSE CABINET	PLAM	PLASTIC LAMINATE
FIN	FINISH	PLAS	PLASTER
FIN	FINISH	PLBG	PLUMBING
FLR	FLOOR	PLYW	PLYWOOD
FLASH	FLASHING	PNL	PANEL
FLUOR	FLUORESCENT	PR	PAIR
FOC	FACE OF CONCRETE	PRST	PRECAST



DRAWING INDEX

SHT	DESCRIPTION
G-001	SITE PLAN, ABBREVIATION, DRAWING INDEX, PROJECT DATA, GENERAL NOTES AND LEGEND
G-002	PARTIAL SITE PLAN
G-003	TOPOGRAPHIC SURVEY MAP
A-101	FLOOR PLAN
A-102	ROOF PLAN
A-103	EXTERIOR ELEVATION
A-104	EXTERIOR ELEVATION
A-105	EXTERIOR ELEVATION
A-106	EXTERIOR ELEVATION
A-501	DETAILS

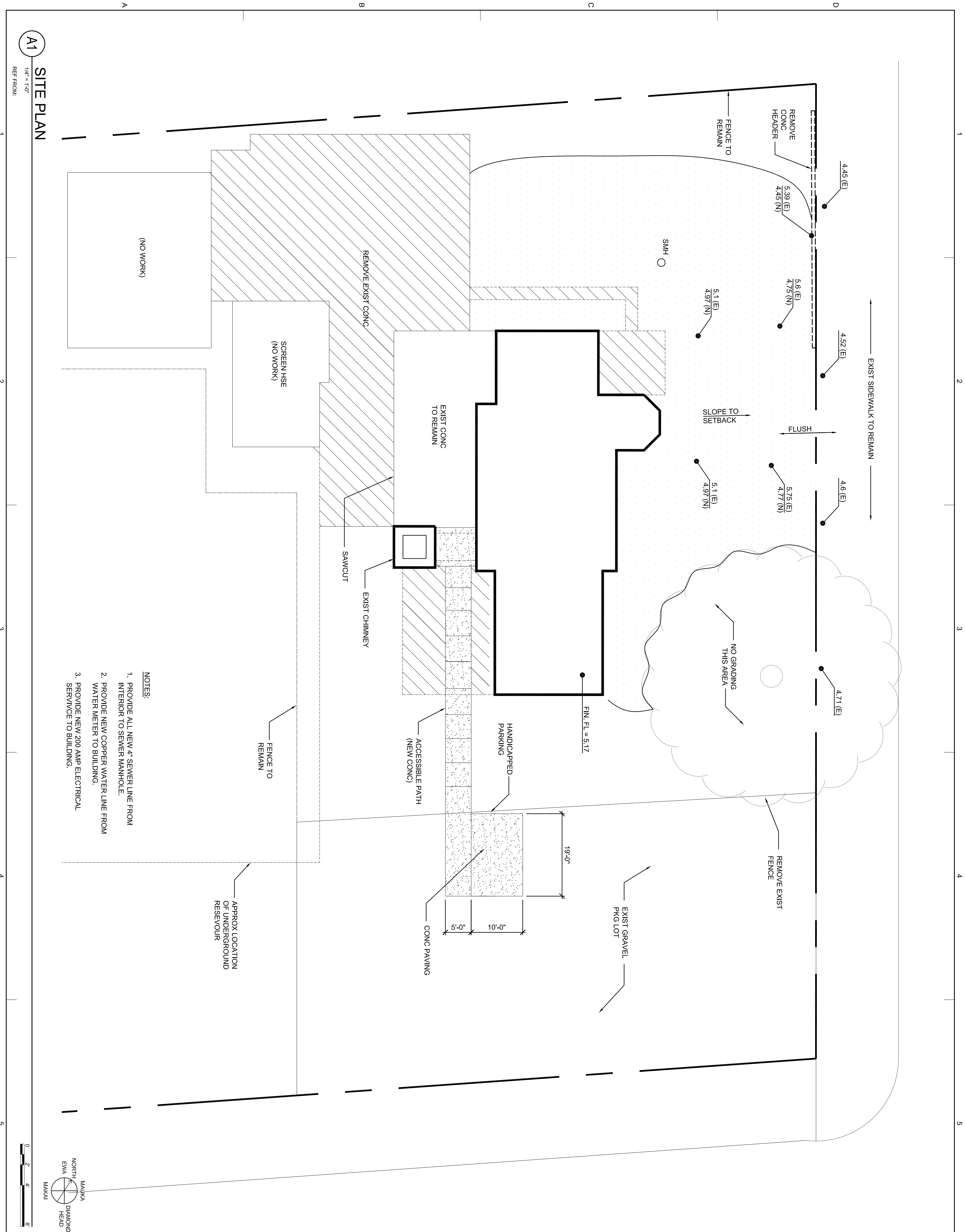
PROJECT DATA

OWNER:	STATE OF HAWAII
TAX MAP KEY:	653 ALA MOANA BOULEVARD HONOLULU, HI 96813
LOT AREA:	48,880 SQ FT
FLOOR AREA:	3,332 SQ FT (3 BUILDINGS)
ZONING:	COMMERCIAL
SMAA SHORELINE:	NOT IN SMAA
SPECIAL DISTRICT:	KAKAAKO COMMUNITY DEVELOPMENT DISTRICT
STATE LAND USE:	URBAN DISTRICT
FLOOD ZONE:	X- BEYOND 500 YEAR FLOOR PLAN

GENERAL NOTES

- TYPICAL MATERIAL INDICATIONS ON INTERIOR ELEVATIONS ARE CALLED OUT ON ELEVATION 'A'. TYPICAL MATERIAL INDICATIONS ON EXTERIOR ELEVATIONS ARE CALLED OUT ON THE FRONT ELEVATION.
- ALL ITEMS & MATERIALS NOTED WITHIN THESE DRAWINGS ARE NEW UNLESS INDICATED OTHERWISE.
- COMPLY WITH THE LATEST CITY, STATE, AND FEDERAL LAWS, BUILDING CODES, THEIR ADDITIONS, AMENDAS, AND AMENDMENTS IN THE CONSTRUCTION OF THIS PROJECT.
- REPAIR ALL DAMAGE CAUSED BY CONSTRUCTION OF THIS PROJECT.
- USE DIMENSIONS NOTED ON DRAWINGS ONLY. DO NOT SCALE DIMENSIONS FROM THE DRAWINGS.
- FIRE SAFETY DURING CONSTRUCTION, ALTERATION OR DEMOLITION SHALL BE IN ACCORDANCE WITH ARTICLE 87, UFC 1997.

PROJECT NO:	1233	
CAD DWG FILE:	G-001 Title Sheet.dwg	
PLOTTED:	Mar 05, 2014 - 11:44AM	
DESIGNED BY:		
DRAWN BY:		
CHECKED BY:		
MARK	DATE	DESCRIPTION
ISSUE:		
PROJECT TITLE		
SITE PLAN, ABBREVIATIONS, DRAWING INDEX, PROJECT DATA		
GENERAL NOTES		
SHEET TITLE		
G-001		
OF		
SHEET		



A1
 1/4" = 1'-0"
SITE PLAN
 REF FROM:

- NOTES:**
1. PROVIDE ALL NEW 4" SEWER LINE FROM INTERIOR TO SEWER MANHOLE.
 2. PROVIDE NEW COPPER WATER LINE FROM WATER METER TO BUILDING.
 3. PROVIDE NEW 200 AMP ELECTRICAL SERVICE TO BUILDING.

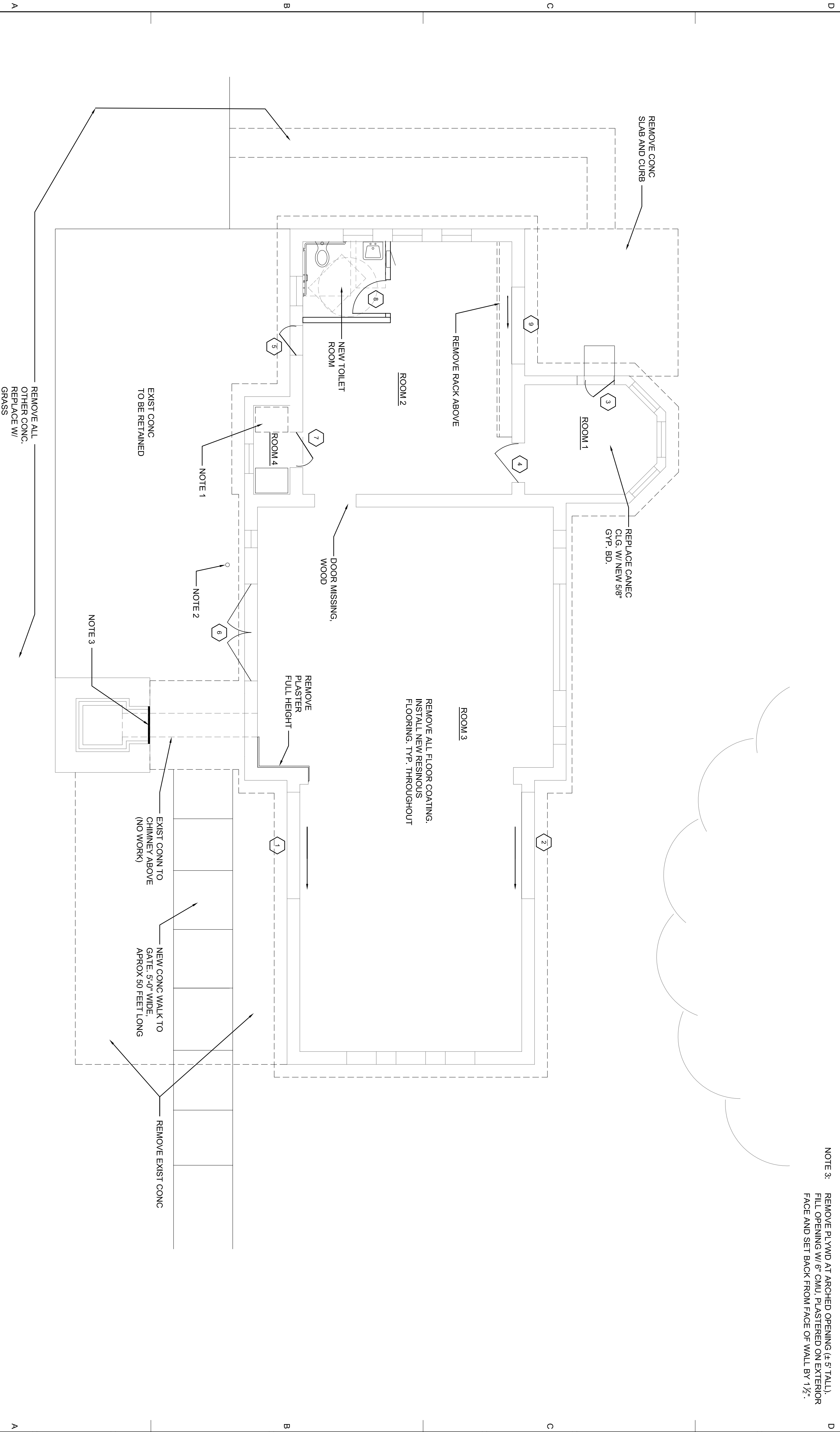
PROJECT	
KAKAKO PUMPING STATION IMPROVEMENTS	
653 ALA MOANA BLVD HONOLULU, HI 96813	
TMK: 2-1-15:63	
MARK	
DATE	DESCRIPTION
ISSUE:	
PROJECT NO.: 1233	
CAD DWG FILE: G-002 SITE PLAN.dwg	
PLOTTED: Mar '11, 2014 - 2:43PM	
DESIGNED BY:	
DRAWN BY:	
CHECKED BY:	
SHEET TITLE	
SITE PLAN	

G-002
 SHEET OF

NOTE 1: IN ROOM 4, INSTALL SERVICE SINK FOR JANITORIAL USE. INSTALL CONDENSER FOR FAN COIL UNIT IN THIS ROOM W/ LOUVER VENT AT FORMER WDW. FAN COIL UNIT SHALL BE LOCATED ABOVE TOILET.

NOTE 2: BOLLARD LIGHT SHALL BE INSTALLED TO ELIMINATE THE NEED FOR A WALL MOUNTED EXIT LIGHT

NOTE 3: REMOVE PLYWD AT ARCHED OPENING (± 5' TALL). FILL OPENING W/ 6" CMU. PLASTERED ON EXTERIOR FACE AND SET BACK FROM FACE OF WALL BY 1 1/2".



NOTE:
DOOR 6: INSTALL POWER ASSIST OPERATOR
ON DOOR TO MEET ADA REQUIREMENTS

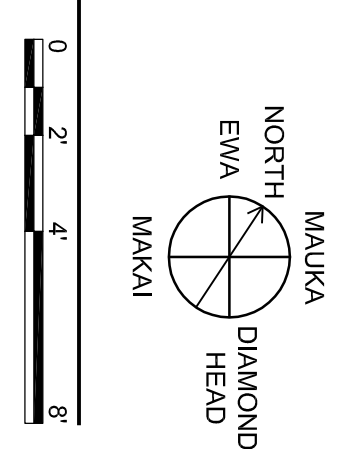
EXIST CONN TO CHIMNEY ABOVE (NO WORK)
NEW CONG WALK TO GATE. 5'-0\"/>

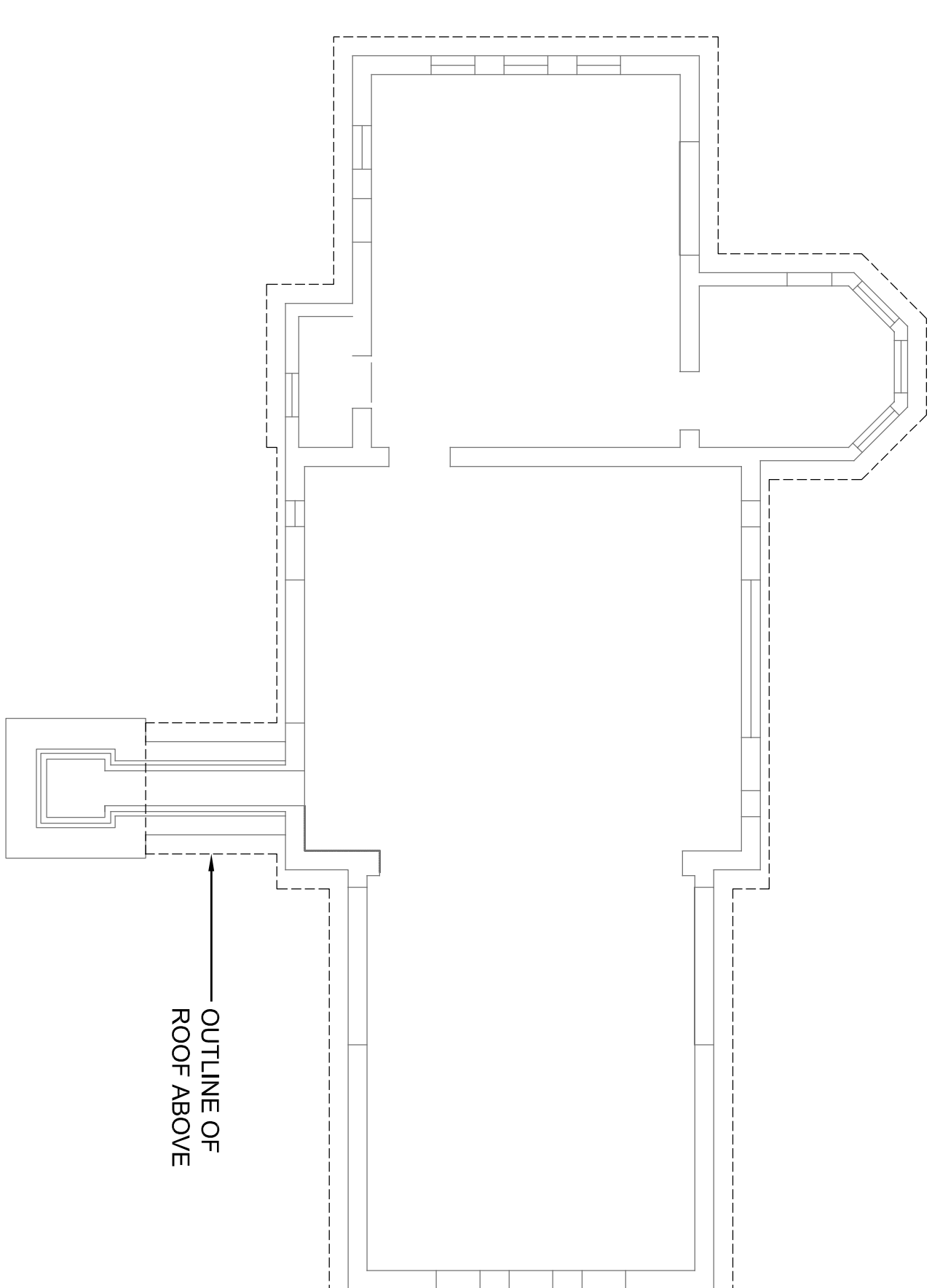
**KAKAKO
PUMPING STATION
IMPROVEMENTS**
653 ALA MOANA BLVD
HONOLULU, HI 96813
TMK: 2-1-15:63

MARK	DATE	DESCRIPTION

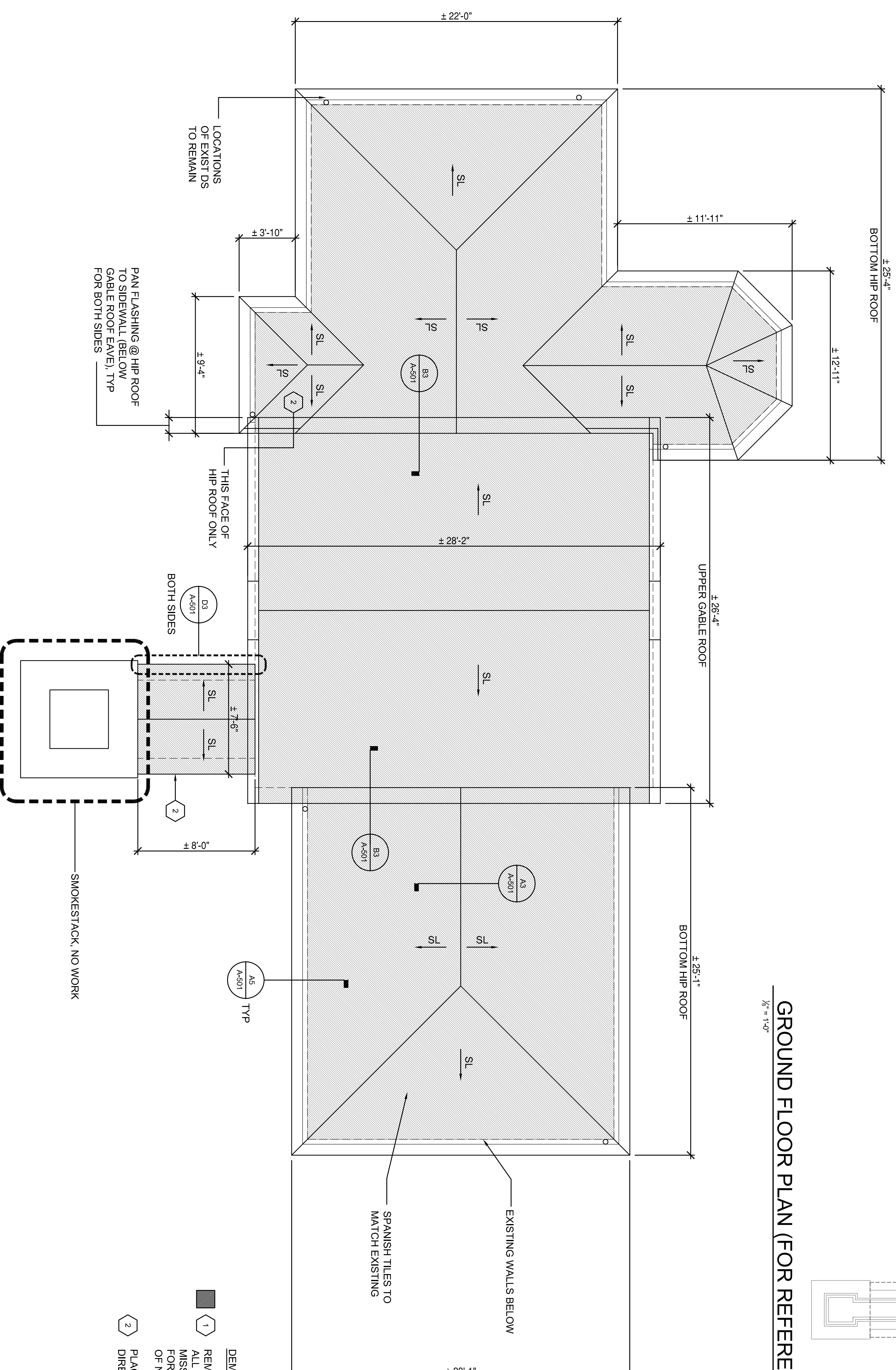
PROJECT NO: 1233
 CAD DWG FILE: A-Plan Elevations.dwg
 PLOTTED: Mar 11, 2014 - 2:12PM
 DESIGNED BY:
 DRAWN BY:
 CHECKED BY:

SHEET TITLE
 FLOOR PLAN





GROUND FLOOR PLAN (FOR REFERENCE ONLY)



DEMOLITION NOTES

1 REMOVE ALL EXISTING ROOF TILES. SALVAGE ALL GOOD TILES FOR RE-USE. REPLACE MISSING OR BROKEN TILES W/ NEW TO MATCH FOR THE PURPOSE OF BIDDING. ASSUME 100SF OF NEW TILES.

2 PLACE NEW TILES IN THESE LOCATIONS OR AS DIRECTED BY ARCHITECT.

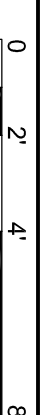
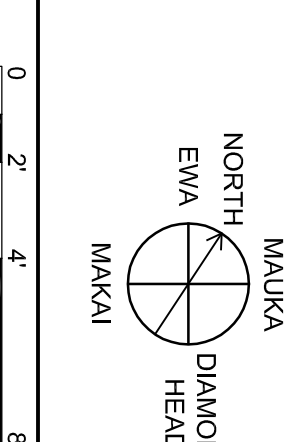
**KAKAKO
PUMPING STATION
IMPROVEMENTS**
653 ALA MOANA BLVD
HONOLULU, HI 96813
TMK: 2-1-15:63

PROJECT

MARK DATE DESCRIPTION
ISSUE:
PROJECT NO.: 1233
CAD DWG FILE: A-102 Roof plan.dwg
PLOTTED: Mar 05, 2014 - 11:09AM
DESIGNED BY: GM
DRAWN BY: MC
CHECKED BY:

SHEET TITLE
ROOF AND GROUND FLOOR PLANS

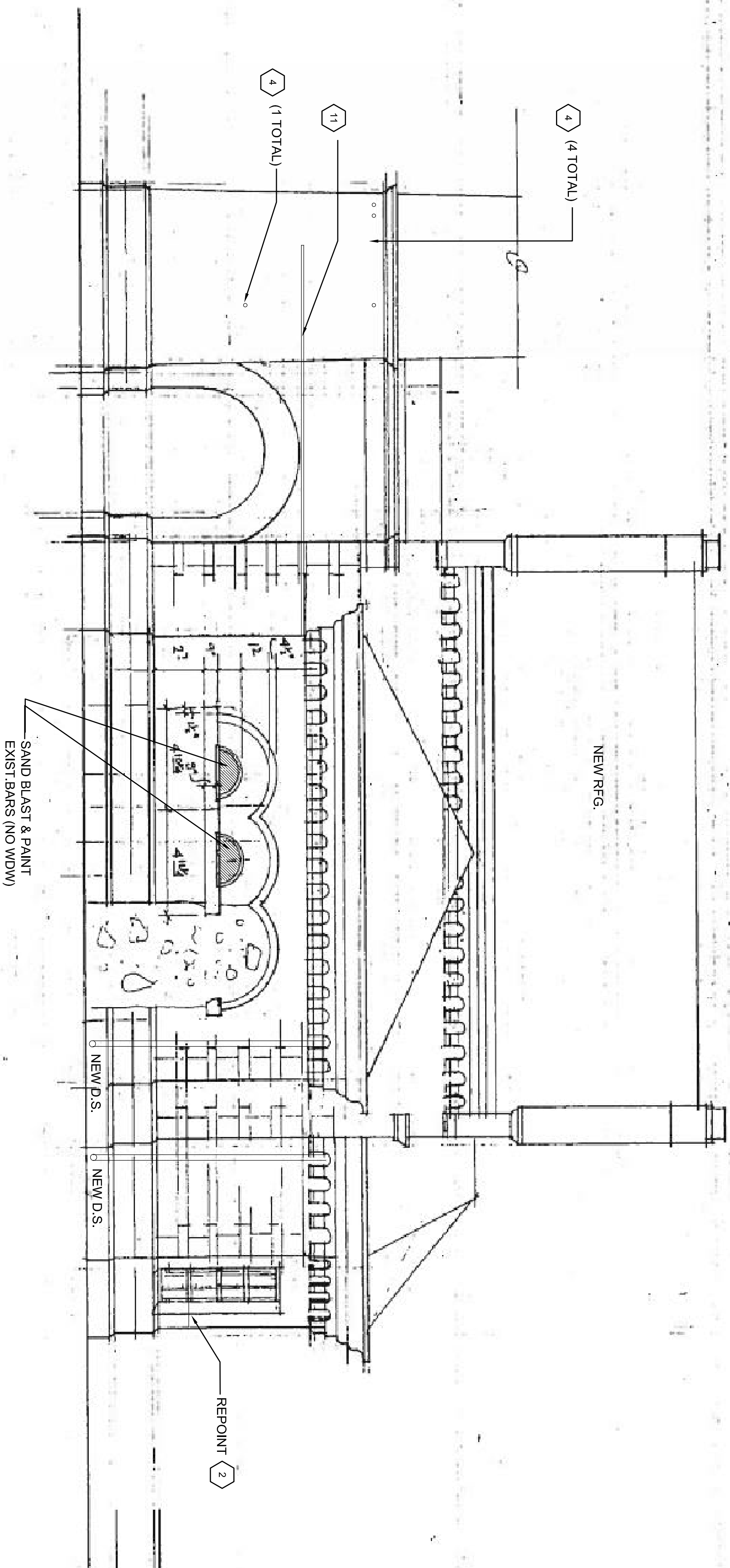
A1
1/4" = 1'-0"
REF FROM:



A-102
OF

SHEET

- NOTES:**
- ① FILL CRACKS WITH MORTAR TO MATCH STONE. KEEP RED JT.
 - ② REPOINT JOINT WITH RED MORTAR TO MATCH EXISTING
 - ③ REMOVE LOOSE PLASTER AROUND WINDOW. PATCH. SKIM COAT ALL WITH NEW PLASTER FIN.
 - ④ REMOVE BOLT. FILL HOLE WITH MORTAR TO MATCH STONE
 - ⑤ REMOVE PAINT FROM STONE
 - ⑥ REPLACE ALL GLASS. CLEAN AND NEUTRALIZE ALL RUST. NEW GLAZING PUTTY THROUGHOUT. PAINT INTERIOR AND EXTERIOR
 - ⑦ REPLACE GLASS SHOWN AS SHADED. CLEAN AND NEUTRALIZE ALL RUST. NEW GLAZING PUTTY THROUGHOUT. PAINT INTERIOR AND EXTERIOR
 - ⑧ REMOVE WINDOW ENTIRELY. SANDBLAST TO REMOVE ALL RUST. INSTALL ALL NEW GLASS. STRAIGHTEN MUNTINS
 - ⑨ ALUMINUM LOUVER FOR OUTSIDE AIR INTAKE
 - ⑩ USE CHEMICAL STRIPPERS TO REMOVE OLD RFG. FROM STONE.
 - ⑪



**KAKAKO
PUMPING STATION
IMPROVEMENTS**
653 ALA MOANA BLVD
HONOLULU, HI 96813
TMK: 2-1-15:63

MARK	DATE	DESCRIPTION

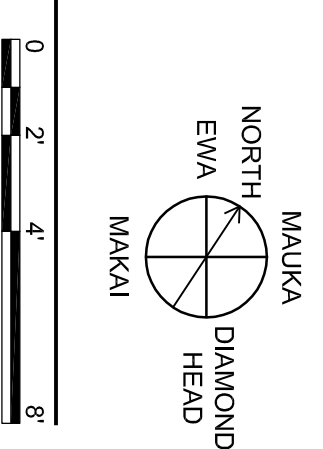
ISSUE:

PROJECT NO: 1233
 CAD DWG FILE: A-Plan Elevations.dwg
 PLOTTED: Mar 05, 2014 - 10:52AM
 DESIGNED BY:
 DRAWN BY:
 CHECKED BY:

SHEET TITLE
 ELEVATION

A1
 1/4" = 1'-0"
 REF FROM:

DIAMOND HEAD ELEVATION



SHEET
A-103
 OF

1

2

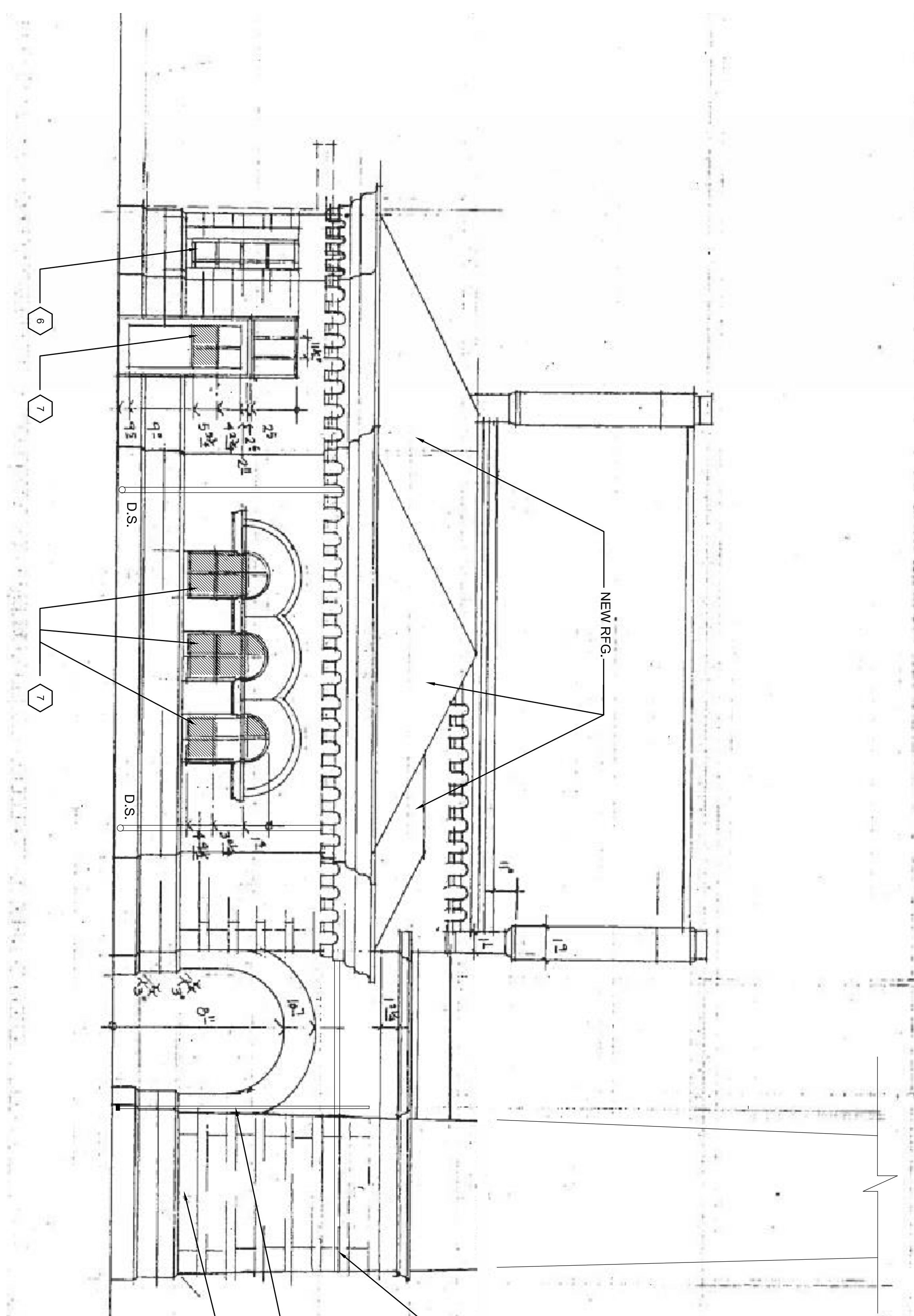
3

4

5

NOTES:

- ① FILL CRACKS WITH MORTAR TO MATCH STONE. KEEP RED JT.
- ② REPOINT JOINT WITH RED MORTAR TO MATCH EXISTING
- ③ REMOVE LOOSE PLASTER AROUND WINDOW. PATCH. SKIM COAT ALL WITH NEW PLASTER FIN.
- ④ REMOVE BOLT. FILL HOLE WITH MORTAR TO MATCH STONE
- ⑤ REMOVE PAINT FROM STONE
- ⑥ REPLACE ALL GLASS. CLEAN AND NEUTRALIZE ALL RUST. NEW GLAZING PUTTY THROUGHOUT. PAINT INTERIOR AND EXTERIOR
- ⑦ REPLACE GLASS SHOWN AS SHADED. CLEAN AND NEUTRALIZE ALL RUST. NEW GLAZING PUTTY THROUGHOUT. PAINT INTERIOR AND EXTERIOR
- ⑧ REMOVE WINDOW ENTIRELY. SANDBLAST TO REMOVE ALL RUST. INSTALL ALL NEW GLASS. STRAIGHTEN MUNTINS
- ⑨ ALUMINUM LOUVER FOR OUTSIDE AIR INTAKE
- ⑩ USE CHEMICAL STRIPPERS TO REMOVE OLD RFG. FROM STONE.
- ⑪



REMOVE CONDUIT
 REMOVE CONDUIT
 ④ (8 BOLTS TO BE REMOVED)

⑪

MARK	DATE	DESCRIPTION

PROJECT NO.: 1233
 CAD DWG FILE: A-Plan Elevations.dwg
 PLOTTED: Mar 05, 2014 - 11:02AM
 DESIGNED BY:
 DRAWN BY:
 CHECKED BY:

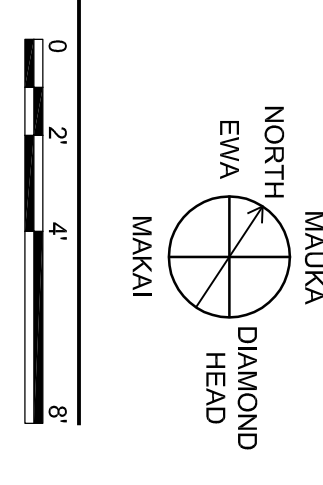
SHEET TITLE
 ELEVATION

**KAKAKO
 PUMPING STATION
 IMPROVEMENTS**
 653 ALA MOANA BLVD
 HONOLULU, HI 96813
 TMK: 2-1-15:63

PROJECT

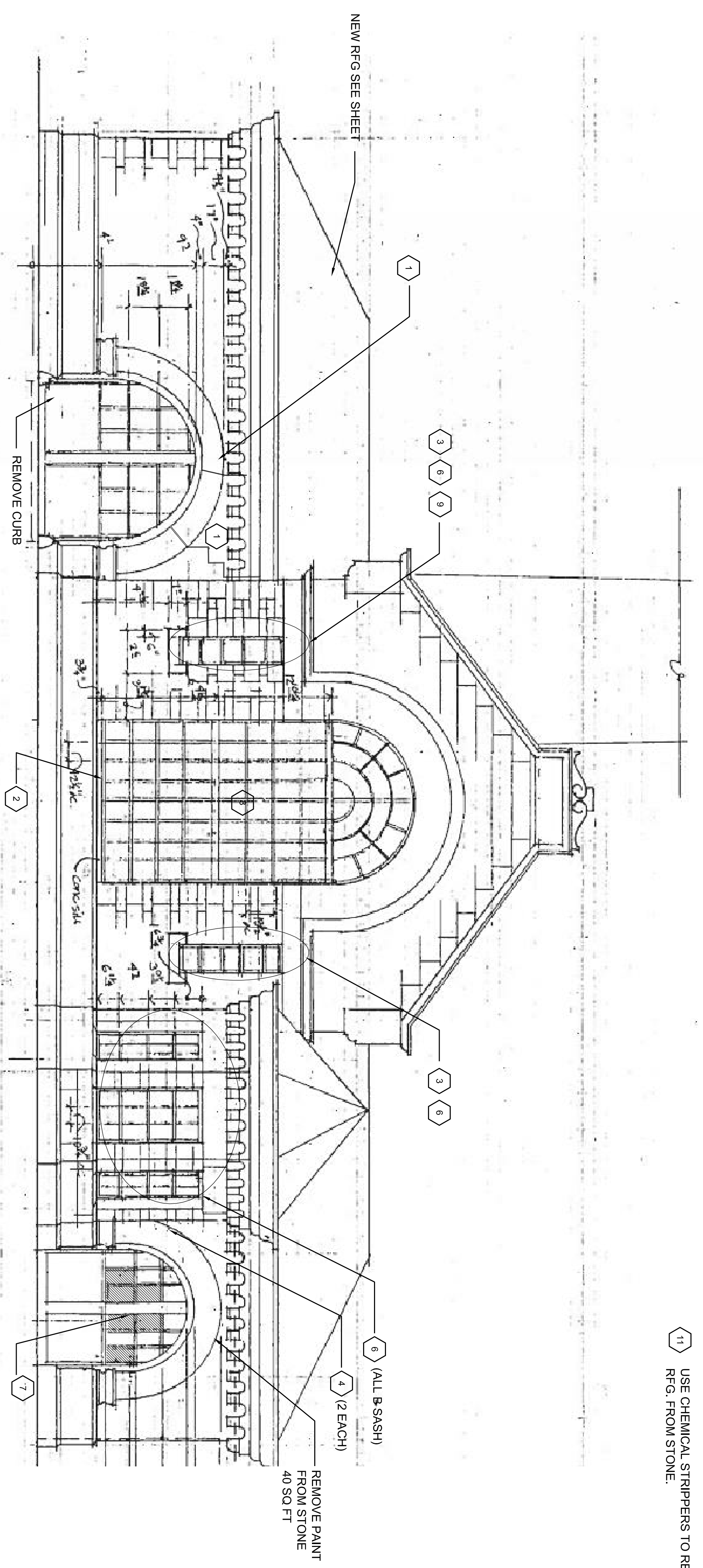
A1
 1/4" = 1'-0"
 REF FROM:

EWA ELEVATION



SHEET
A-104
 OF

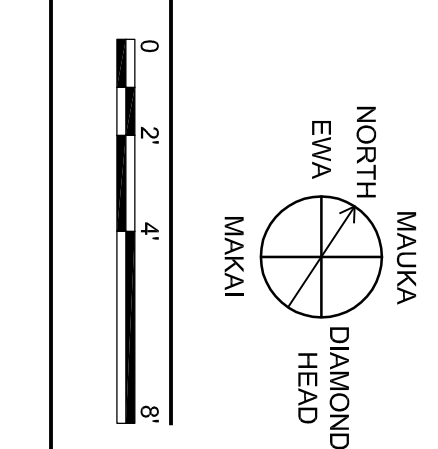
- NOTES:**
- ① FILL CRACKS WITH MORTAR TO MATCH STONE. KEEP RED JT.
 - ② REPOINT JOINT WITH RED MORTAR TO MATCH EXISTING
 - ③ REMOVE LOOSE PLASTER AROUND WINDOW. PATCH. SKIM COAT ALL WITH NEW PLASTER FIN.
 - ④ REMOVE BOLT. FILL HOLE WITH MORTAR TO MATCH STONE
 - ⑤ REMOVE PAINT FROM STONE
 - ⑥ REPLACE ALL GLASS. CLEAN AND NEUTRALIZE ALL RUST. NEW GLAZING PUTTY THROUGHOUT. PAINT INTERIOR AND EXTERIOR
 - ⑦ REPLACE GLASS SHOWN AS SHADED. CLEAN AND NEUTRALIZE ALL RUST. NEW GLAZING PUTTY THROUGHOUT. PAINT INTERIOR AND EXTERIOR
 - ⑧ REMOVE WINDOW ENTIRELY. SANDBLAST TO REMOVE ALL RUST. INSTALL ALL NEW GLASS. STRAIGHTEN MUNTINS
 - ⑨ ALUMINUM LOUVER FOR OUTSIDE AIR INTAKE
 - ⑩ USE CHEMICAL STRIPPERS TO REMOVE OLD RFG. FROM STONE.
 - ⑪



A1 MAUKA ELEVATION

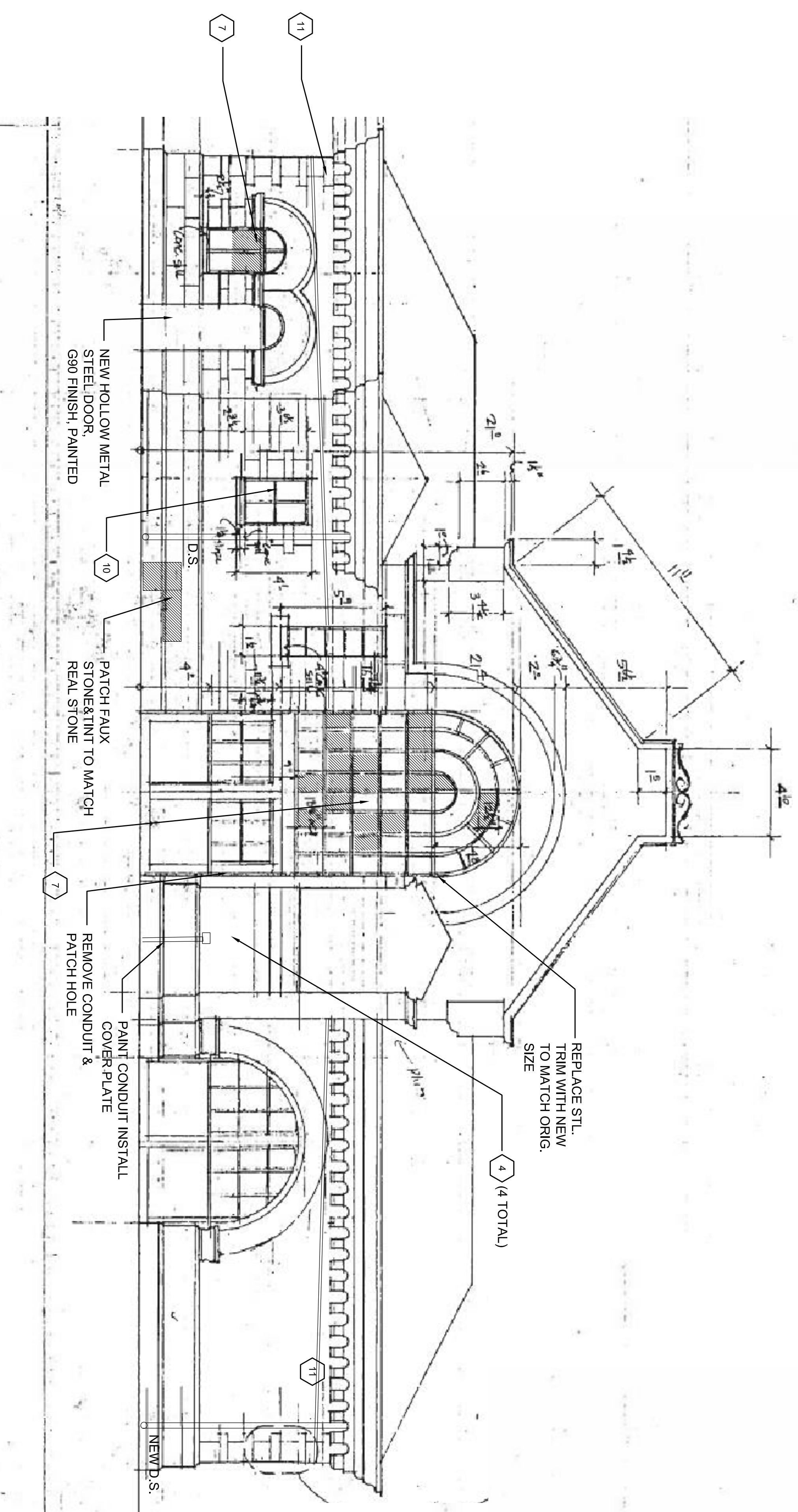
1/4" = 1'-0"
REF FROM:

1 2 3 4 5



PROJECT	
KAKAKO PUMPING STATION IMPROVEMENTS	
653 ALA MOANA BLVD HONOLULU, HI 96813 TMK: 2-1-15:63	
MARK DATE DESCRIPTION	
ISSUE:	
PROJECT NO.: 1233	
CAD DWG FILE: A-Plan Elevations.dwg	
PLOTTED: Mar 05, 2014 - 10:53AM	
DESIGNED BY:	
DRAWN BY:	
CHECKED BY:	
SHEET TITLE	
ELEVATION	

- NOTES:**
- ① FILL CRACKS WITH MORTAR TO MATCH STONE. KEEP RED JT.
 - ② REPOINT JOINT WITH RED MORTAR TO MATCH EXISTING
 - ③ REMOVE LOOSE PLASTER AROUND WINDOW. PATCH. SKIM COAT ALL WITH NEW PLASTER FIN.
 - ④ REMOVE BOLT. FILL HOLE WITH MORTAR TO MATCH STONE
 - ⑤ REMOVE PAINT FROM STONE
 - ⑥ REPLACE ALL GLASS. CLEAN AND NEUTRALIZE ALL RUST. NEW GLAZING PUTTY THROUGHOUT. PAINT INTERIOR AND EXTERIOR
 - ⑦ REPLACE GLASS SHOWN AS SHADED. CLEAN AND NEUTRALIZE ALL RUST. NEW GLAZING PUTTY THROUGHOUT. PAINT INTERIOR AND EXTERIOR
 - ⑧ REMOVE WINDOW ENTIRELY. SANDBLAST TO REMOVE ALL RUST. INSTALL ALL NEW GLASS. STRAIGHTEN MUNTINS
 - ⑨ ALUMINUM LOUVER FOR OUTSIDE AIR INTAKE
 - ⑩ USE CHEMICAL STRIPPERS TO REMOVE OLD RFG. FROM STONE.
 - ⑪



**KAKAKO
PUMPING STATION
IMPROVEMENTS**
653 ALA MOANA BLVD
HONOLULU, HI 96813
TMK: 2-1-15:63

PROJECT

MARK	DATE	DESCRIPTION

ISSUE:

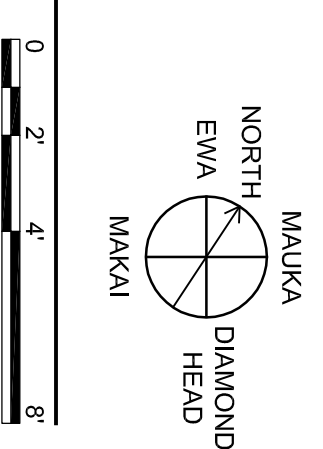
PROJECT NO.:	1233
CAD DWG FILE:	A-Plan Elevations.dwg
PLOTTED:	Mar 05, 2014 - 10:54AM
DESIGNED BY:	
DRAWN BY:	
CHECKED BY:	

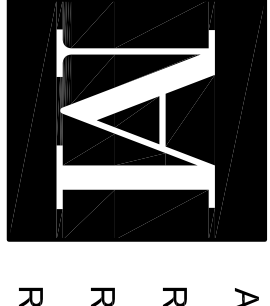
SHEET TITLE
ELEVATION

A-106
OF

A1
1/4" = 1'-0"
REF FROM:

MAKAI ELEVATION

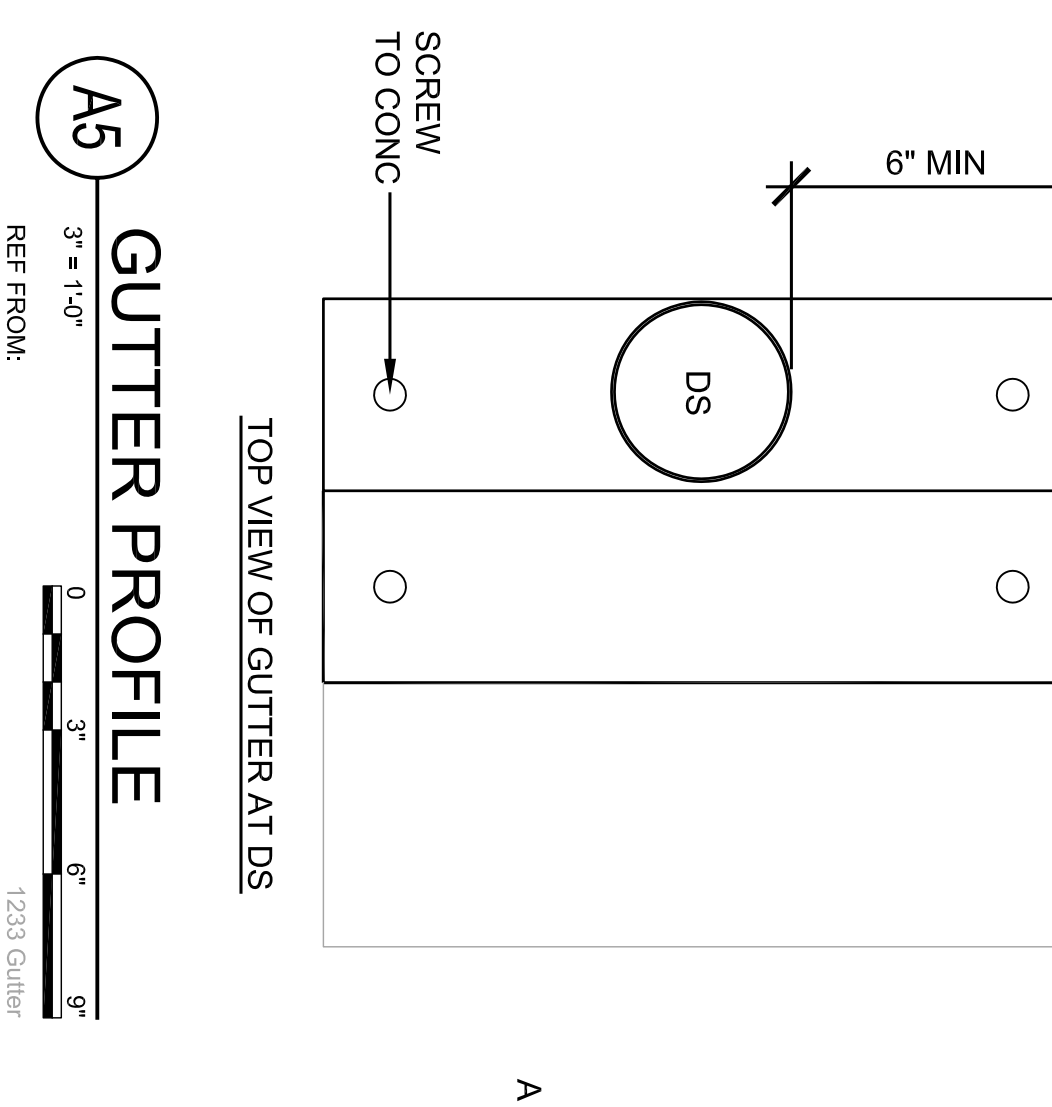
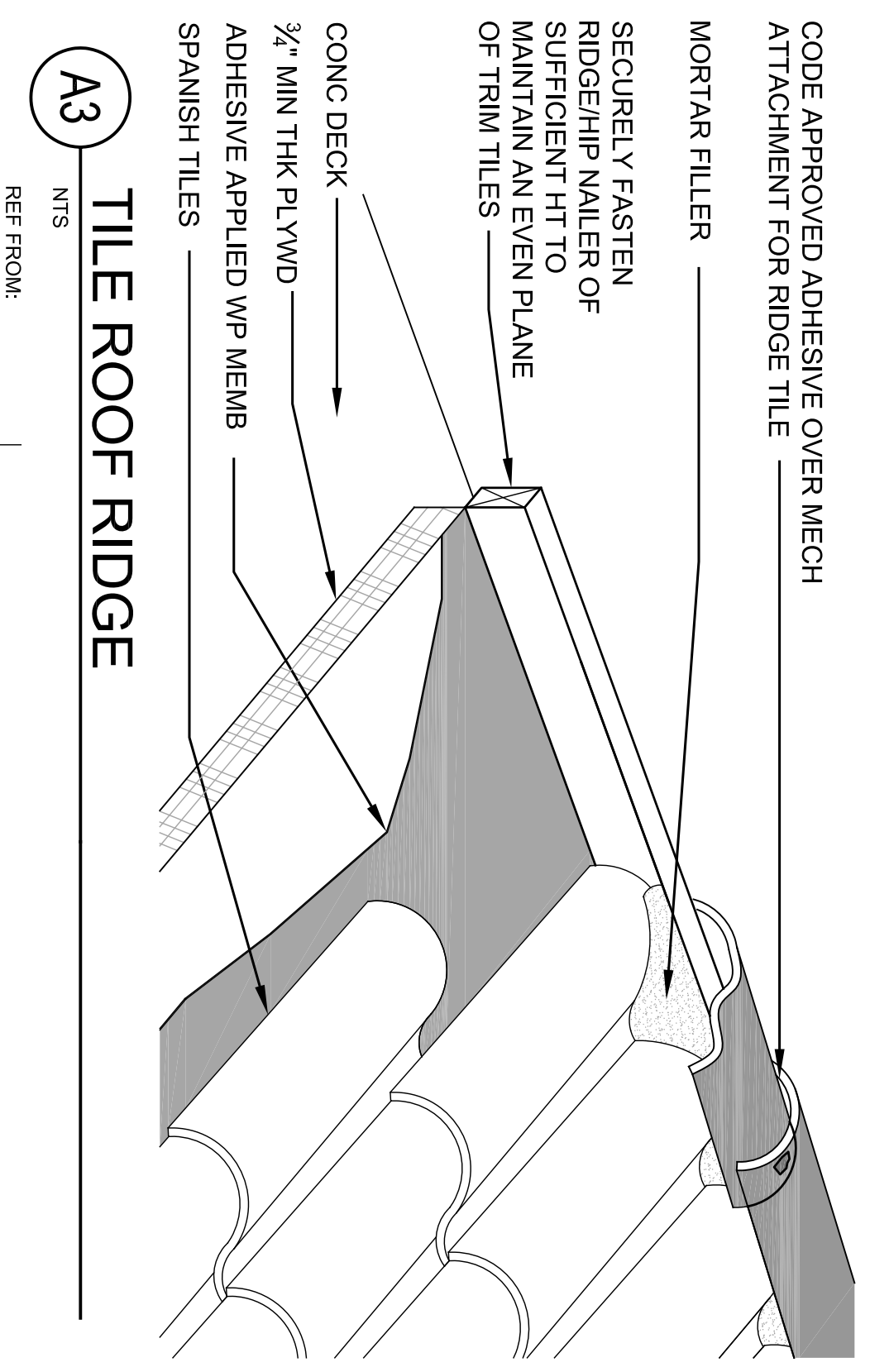
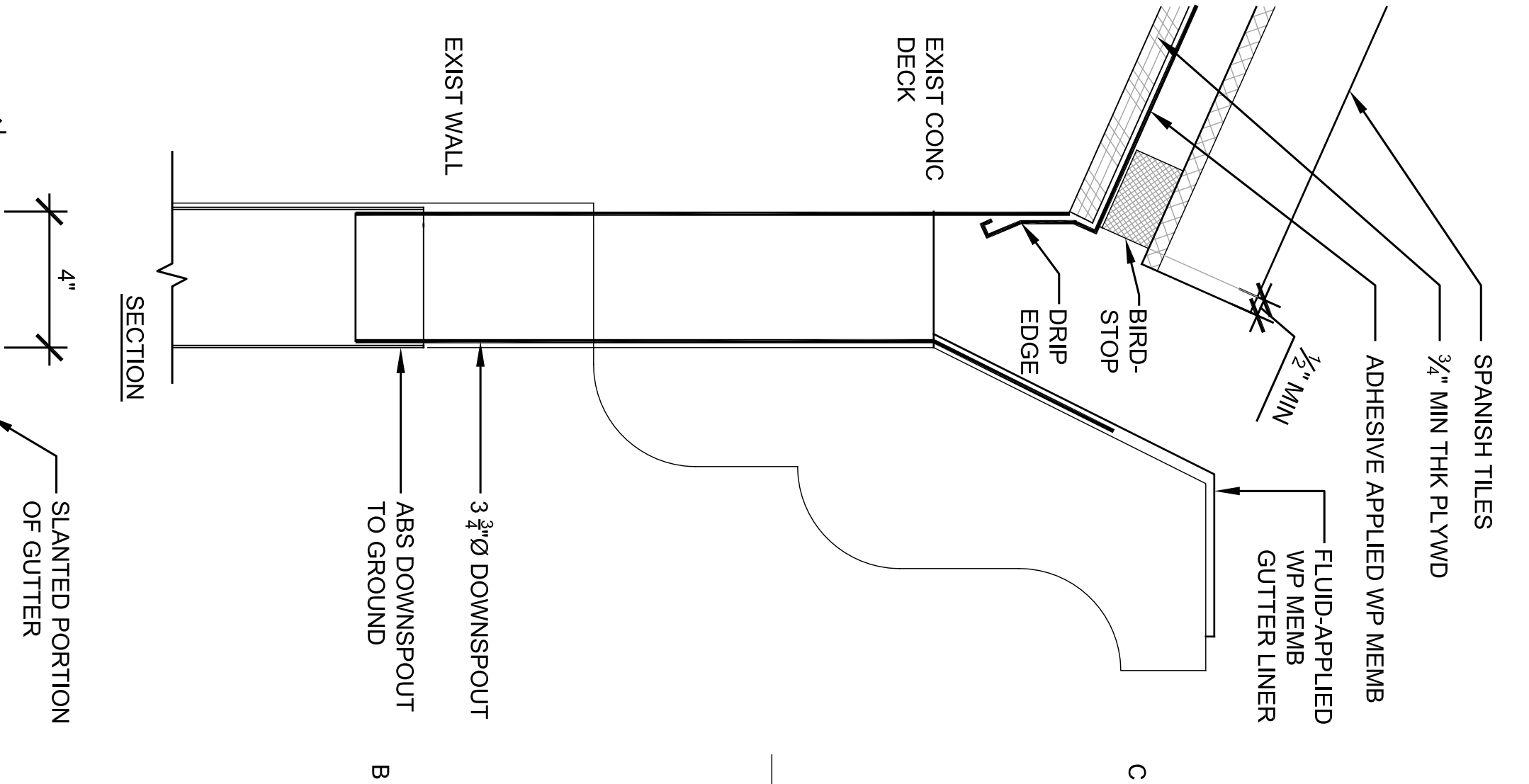
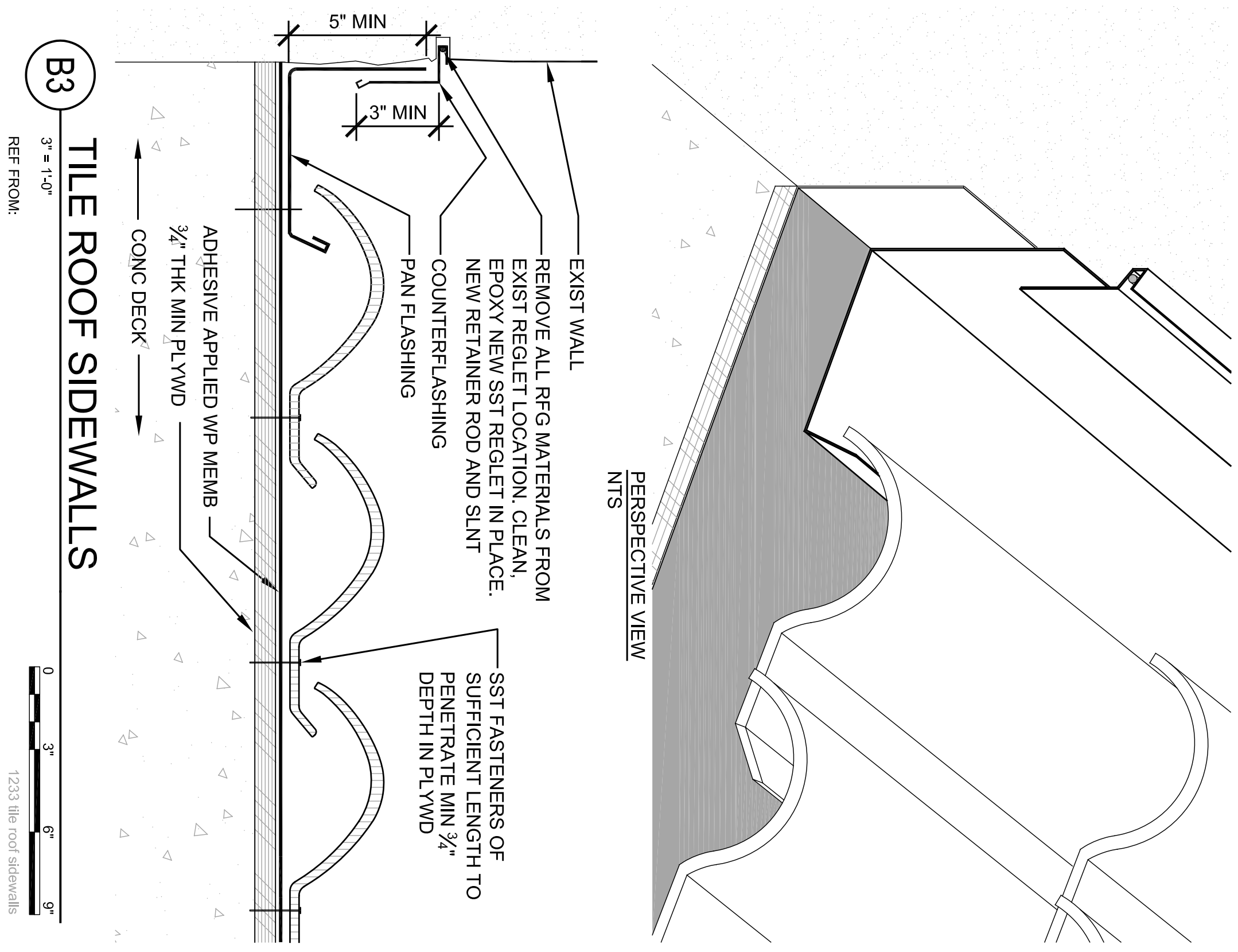
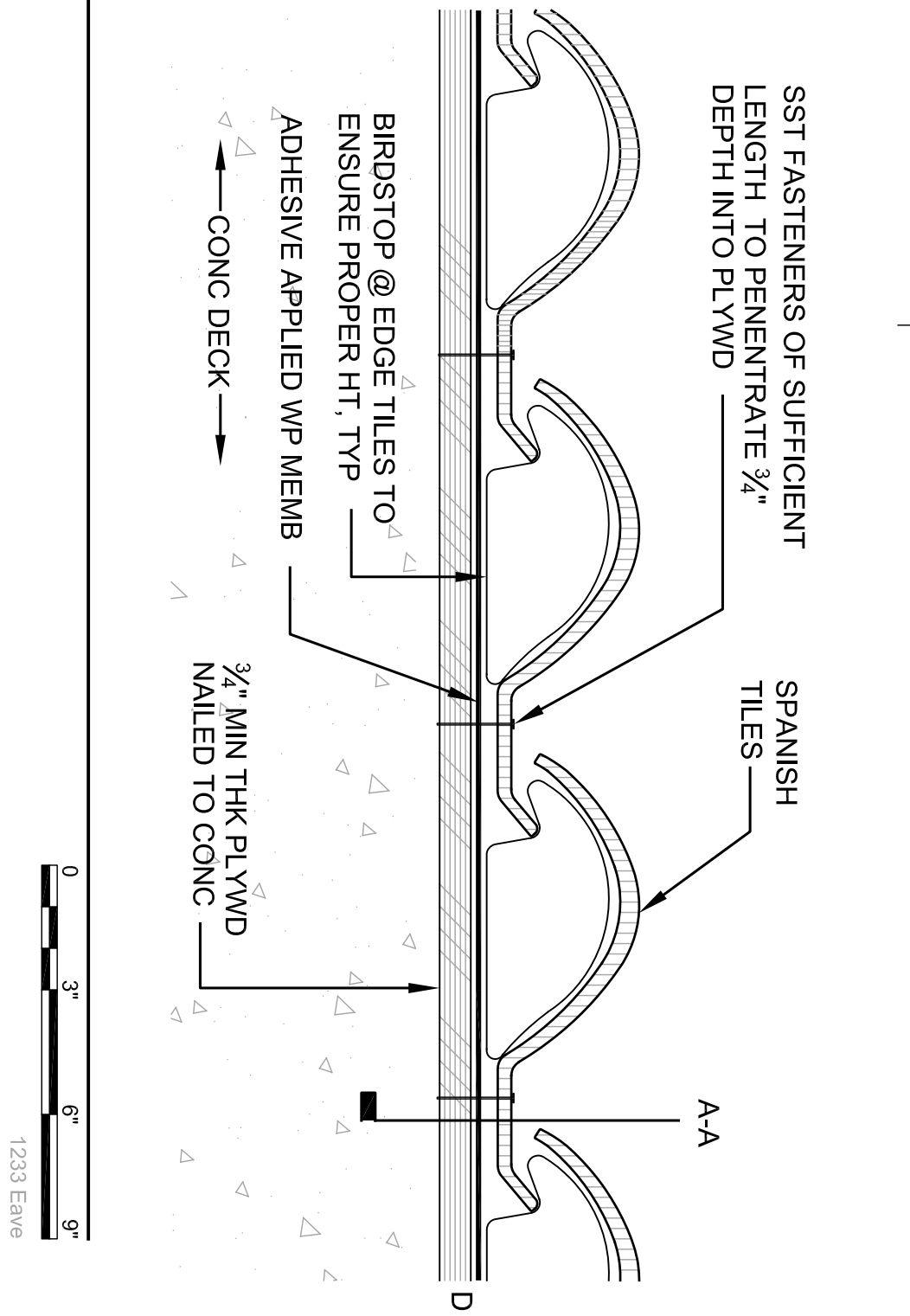
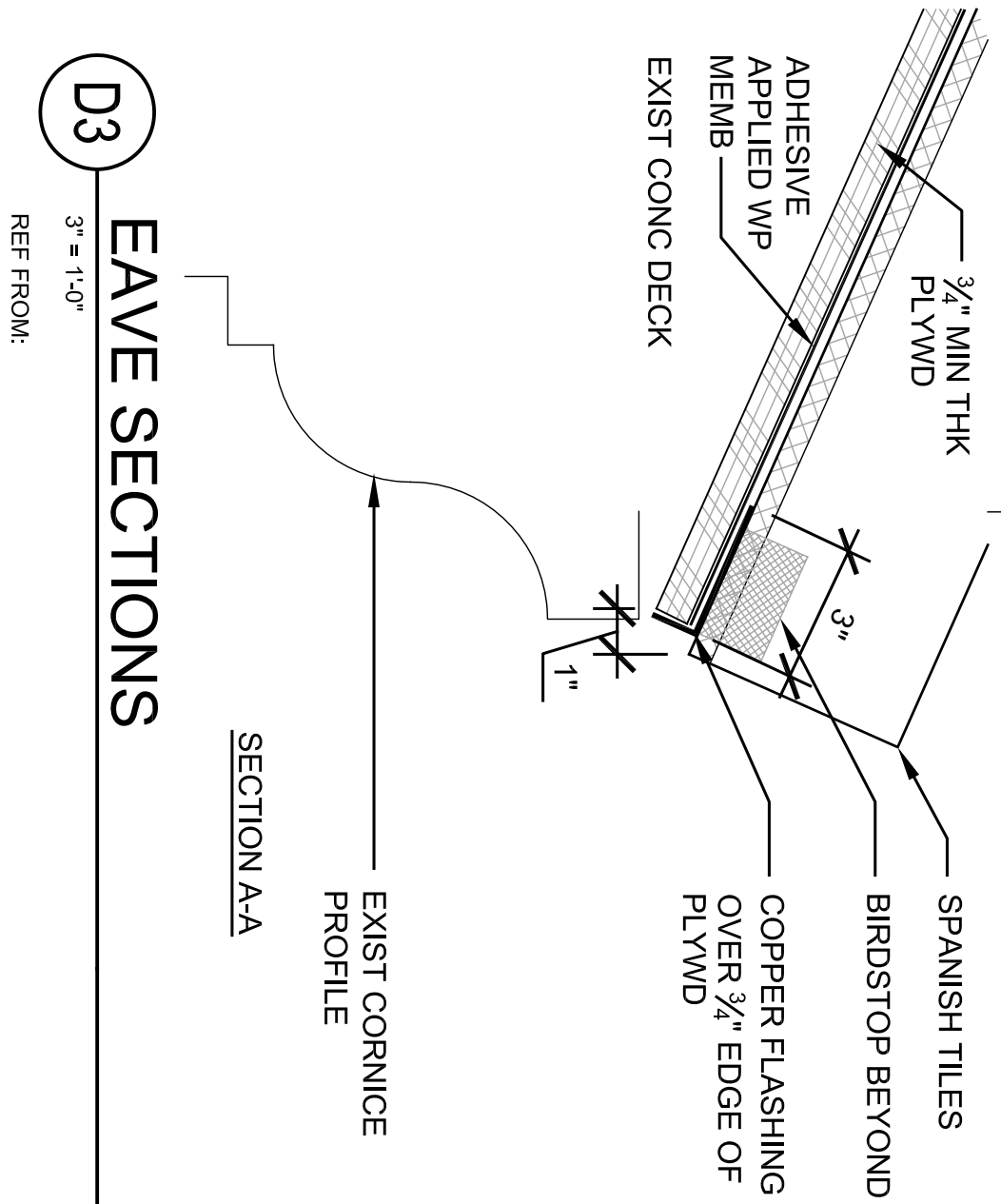




ARCHITECTURE
RESTORATION
RENOVATION
RESEARCH

Mason Architects

119 Merchant Street, Suite 501
Honolulu, Hawaii 96813
www.masonarch.com
Voice: 808 536-0556
Fax: 808 526-0577



PROGRESS SET

Not for Construction

PROJECT

REROOFING
OF THE
KAKAKO
PUMPING STATION
653 ALA MOANA BLVD
HONOLULU, HI 96813
TMK: 2-1-15;63

MARK	DATE	DESCRIPTION

ISSUE:

PROJECT NO:	1233
CAD DWG FILE:	A-501 Details.dwg
PLOTTED:	Jun 22, 2012 - 10:44AM
DESIGNED BY:	GM
DRAWN BY:	MWW
CHECKED BY:	

SHEET TITLE

DETAILS

A-501