




# KAKA'AKO MAKAI PARKS

KAKA'AKO WATERFRONT PARK | GATEWAY PARK | KEWALO BASIN PARK  
OPEN HOUSE AUGUST 28 & 30, 2014





**Legend**

 Kaka'ako Makai Parks

Kaka'ako Makai Parks Project Boundary: Gateway Park, Kaka'ako Waterfront Park, Kewalo Basin Park.











1952 aerial photograph: Beginning of landfill.





1968 aerial photograph: filled industrial land.



2/26/91 Sta 12+00 looking E at grading  
operation in foreground.  
Revetment wall construction  
beyond.



Construction process February 1991.



Kakaako Waterfront Park - Laying PVC  
membrane. Gas vent pipe ~~in~~<sup>in the</sup> foreground.



Construction process July 1991.



STAINLESS STEEL PIPE RAILING  
ASSEMBLED AND INSTALLED ON  
SITE AT PT. PANIC STAIRWAY

10/7/91.



Construction process October 1991.



PROMENADE WALL FOOTING FORMS  
AT OBS. AREA NO. 2

1/2/92



Construction process January 1992.



CLOSE LOOK AT PAVER LAYING  
OPERATION NEAR OBS. AREA NO. 3

3/4/92



Construction process March 1992.





Images Photography, Aerial View  
Kaka'ako Waterfront Park, looking  
Diamond Head 5/1/92

Construction process May 1992.





Aerial view after construction completion October 1992.





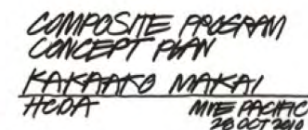
**Legend**

	Kaka'ako Makai Parks	<b>HCDA Land Use</b>	<b>Zoning</b>
	MUZ: Mixed Use		KAKAAKO COMM. DEV. DISTRICT
	MUZ-I: Mixed Use- Industrial		MIXED USE PRECINCT
	OTHER		P-1
	P: Park		P-2
	PU: Public Use		PUBLIC PRECINCT
	WC: Waterfront Commercial		PUBLIC USE PRECINCT
			WATERFRONT INDUSTRIAL PRECINCT

**Current Makai Area Rules (2005)**









# Guiding Principles

- Community Cultural Gathering Place
- Hawaiian Culture & Values of the Ahupua'a
- Open View Planes
- Coastal & Marine Resources
- Expanded Park & Green Space
- Public Accessibility
- Public Safety, Health & Welfare
- Public Use of Public Lands in the Public Interest
- Kewalo Basin
- Cultural Facilities
- Small Local Businesses
- Hawaiian Sense of Place in Landscape, Setting, and Design
- Community-Government Planning Partnership
- Future Funding & Management

Kaka'ako Makai Conceptual Master Plan 2011 – Guiding Principles.





**Legend**

Kaka'ako Makai Parks

Kaka'ako Large Landowners

CITY AND COUNTY OF HONOLULU

Nearby property owners.







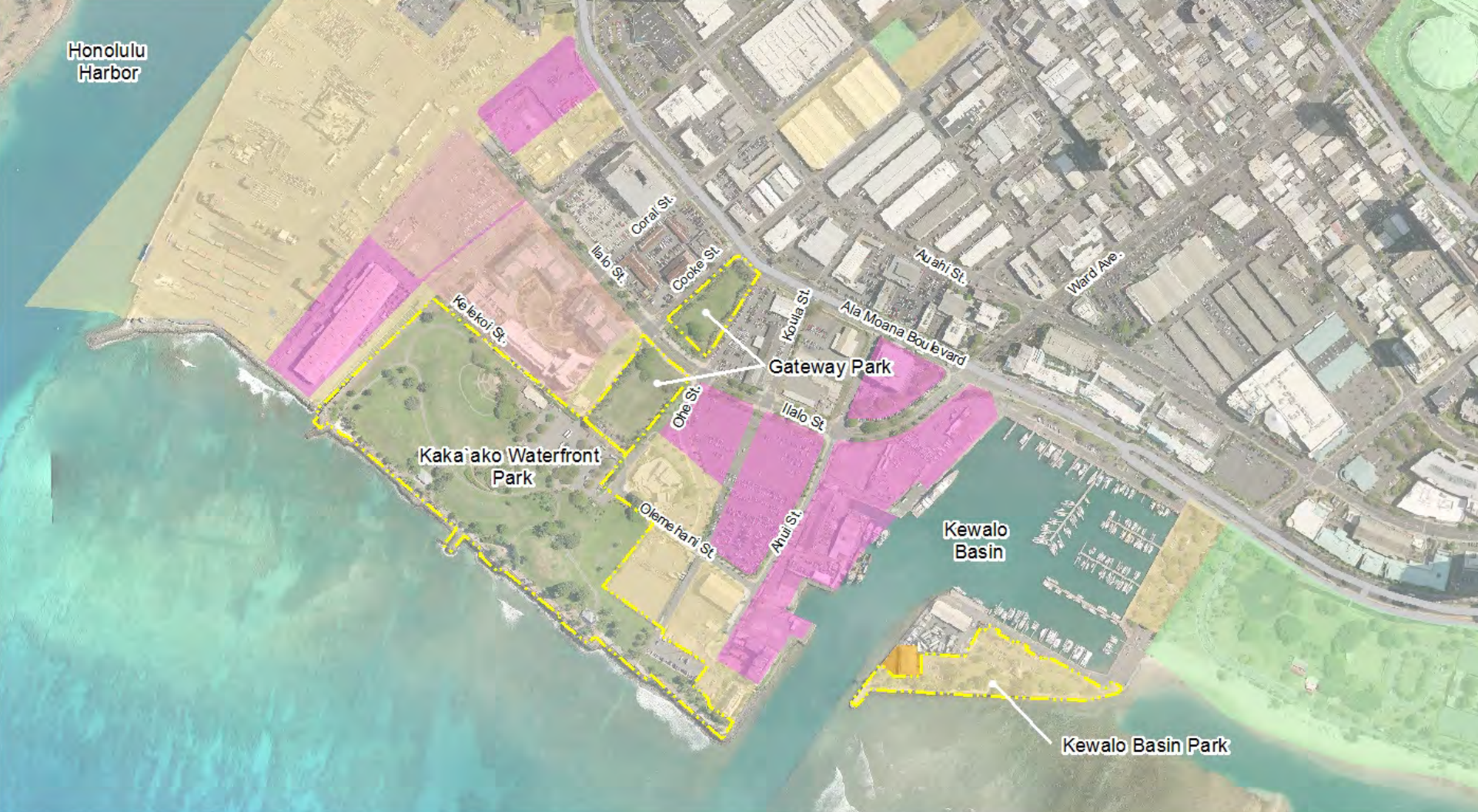
**Legend**

- Kaka'ako Makai Parks
- Kaka'ako Large Landowners**
  - CITY AND COUNTY OF HONOLULU
  - HAWAII COMM DEV AUTHORITY (HCDA)
  - JABSOM
  - KUPU

Nearby property owners.







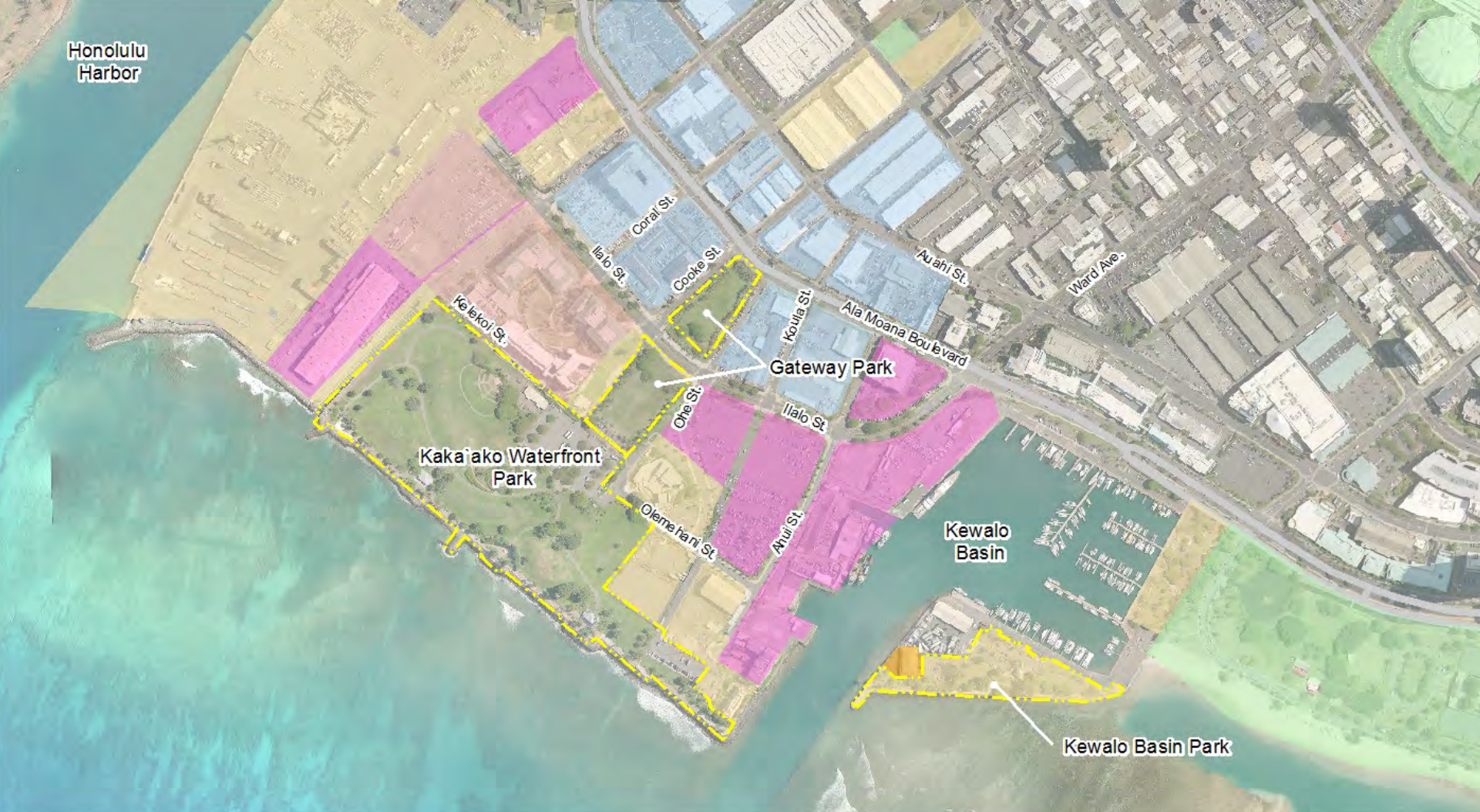
**Legend**

- Kaka'ako Makai Parks
- Kaka'ako Large Landowners**
  - CITY AND COUNTY OF HONOLULU
  - HAWAII COMM DEV AUTHORITY (HCDA)
  - JABSOM
  - KUPU
  - OFFICE OF HAWAIIAN AFFAIRS (OHA)






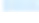
Nearby property owners.







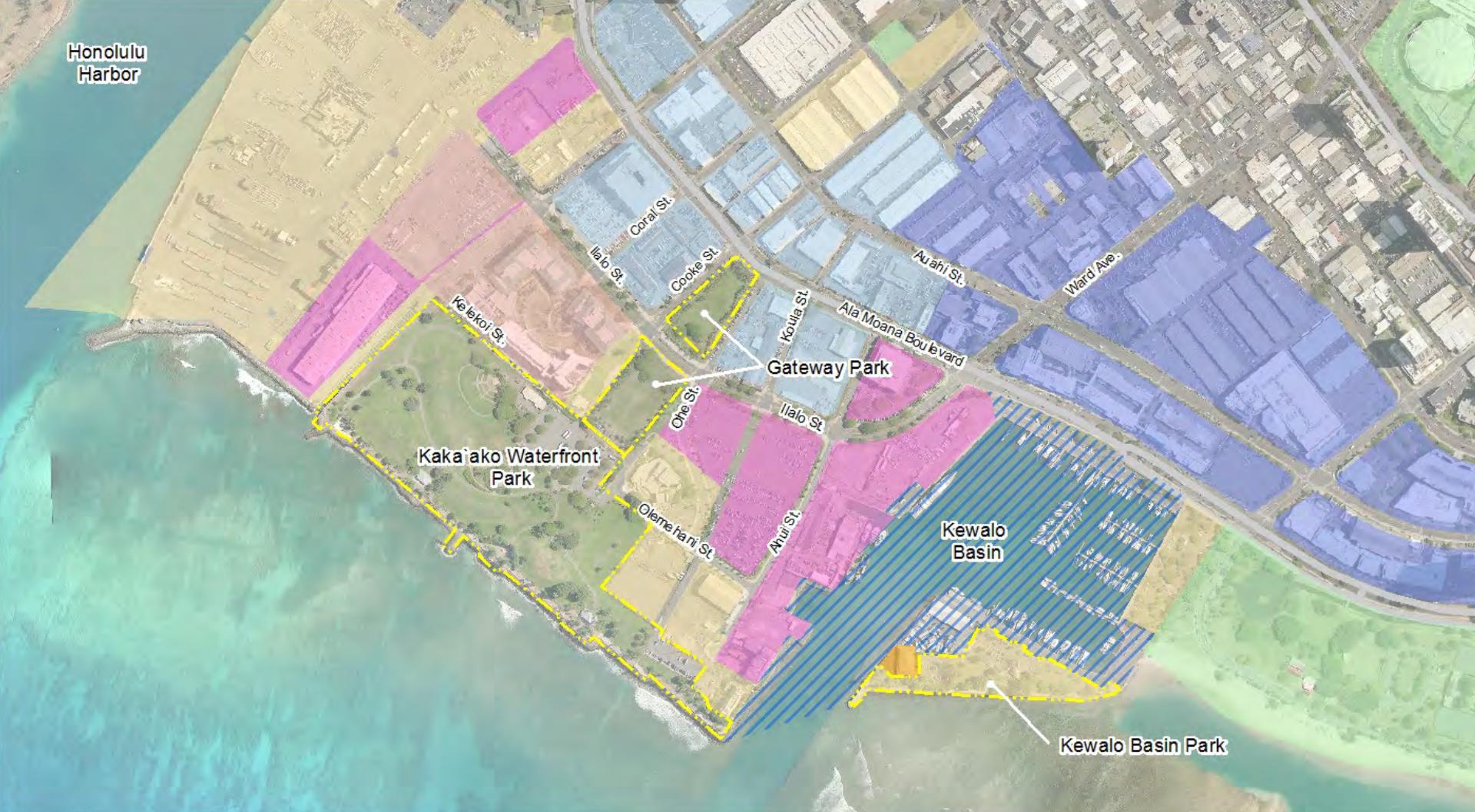
**Legend**

-  Kaka'ako Makai Parks
- Kaka'ako Large Landowners**
  -  CITY AND COUNTY OF HONOLULU
  -  HAWAII COMM DEV AUTHORITY (HCDA)
  -  JABSOM
  -  KUPU
  -  OFFICE OF HAWAIIAN AFFAIRS
  -  KAMEHAMEHA SCHOOLS

Nearby property owners.







**Legend**

- Kaka'ako Makai Parks
- Kaka'ako Large Landowners**

CITY AND COUNTY OF HONOLULU

HAWAII COMM DEV AUTHORITY (HCDA)

JABSOM

KUPU

OFFICE OF HAWAIIAN AFFAIRS

KAMEHAMEHA SCHOOLS

LEASED BY HOWARD HUGES CORP

HOWARD HUGHES CORP

Nearby property owners.







# CURRENT CONDITIONS







Analysis: Existing site characteristics.





Current Kaka'ako Waterfront Park conditions.





Current Kaka'ako Waterfront Park conditions.







Current Kaka'ako Waterfront Park conditions.





Current Gateway Park conditions.





Current Kewalo Basin Park conditions.





Safety concerns.





Typical park usage (ocean-based).





Typical park usage (land-based).





Typical park usage (land-based).





View from Ala Moana Blvd at Gateway Park: lack of visual connectivity to Kaka'ako Waterfront Park.







View from end of Cooke St: lack of pedestrian connectivity from Gateway Park to Kaka’ako Waterfront Park.





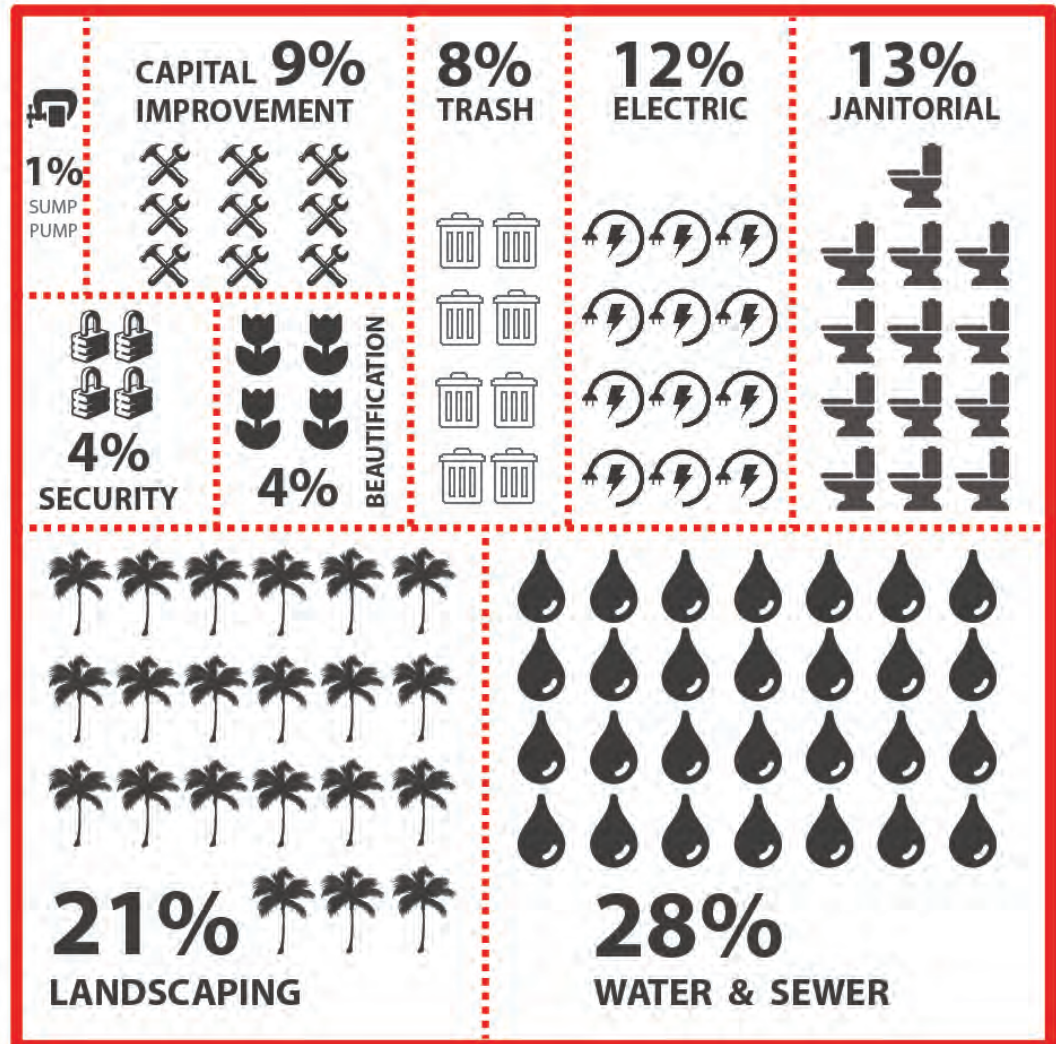
View of dead end by Kewalo Basin: lack of connectivity to Kewalo Basin Park & Ala Moana Beach Park.



# KAKA'AKO MAKAI AREA

TOTAL ANNUAL  
MAINTENANCE  
COST:

**\$1 MILLION**



Source: HCDA Kaka'ako Makai Common Area Fiscal Year 2015 Budget

Challenge: high annual maintenance cost.

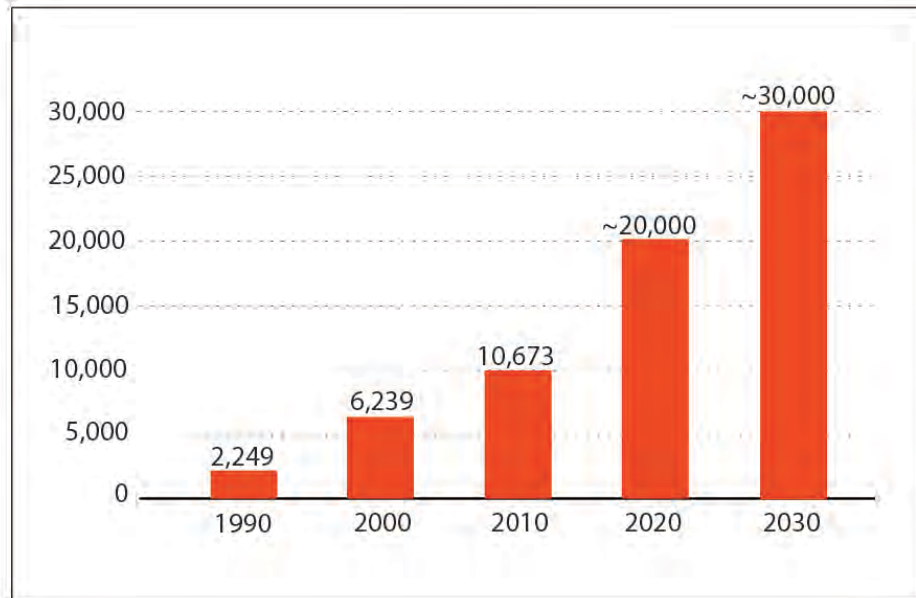




Analysis: Future transportation connections.



## Population Growth in Kaka'ako (1990-2030)



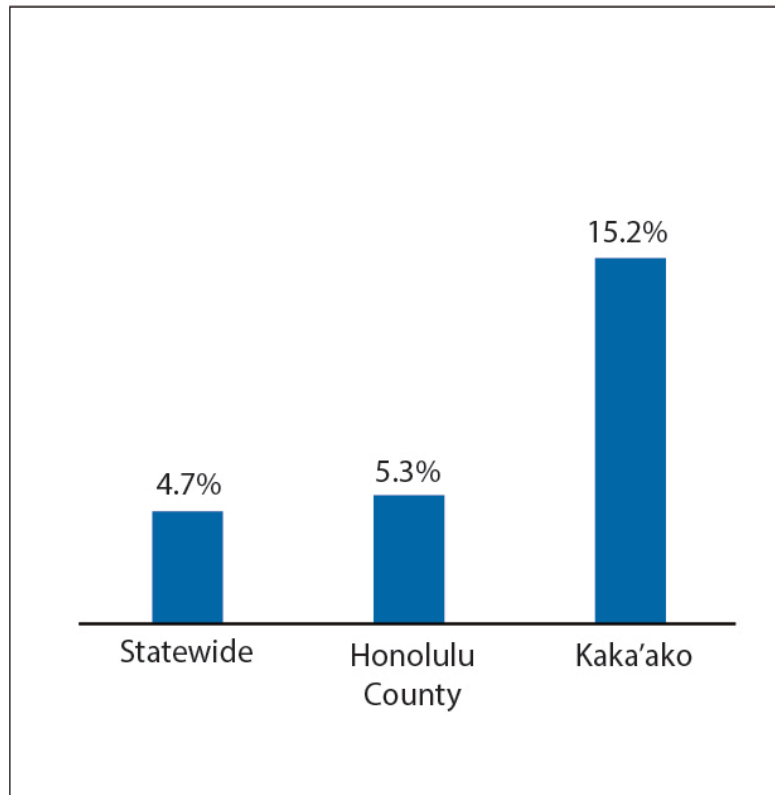
Period	Change	Change in %
1990-2000	3,990	177.4%
2000-2010	4,434	71.1%

Source: HCDA, Kakaako, Urban Core Living | June 2014 | Research and Economic Analysis Division  
& Department of Business, Economic Development and Tourism

Analysis: Projected population for Kaka'ako to be 30,000 by 2030.

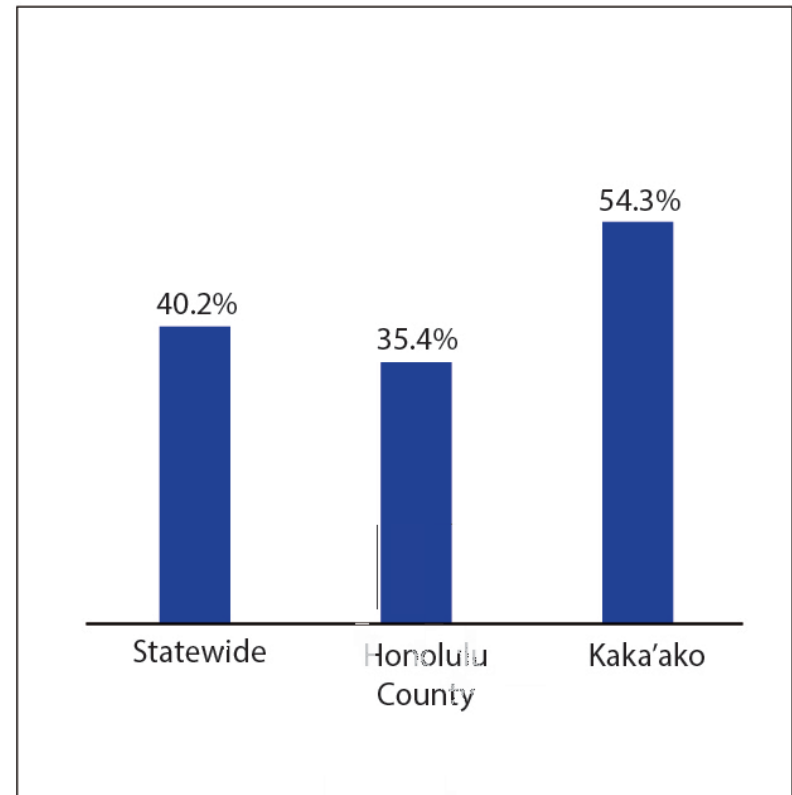


Percentage of Residents Who Walk to Work



Source: Kakaako, Urban Core Living | June 2014 | Research and Economic Analysis Division  
& Department of Business, Economic Development and Tourism

Less Than 20 Minutes Travel Time to Work



Source: Kakaako, Urban Core Living | June 2014 | Research and Economic Analysis Division  
& Department of Business, Economic Development and Tourism

Analysis: A large percent of people in Kaka'ako walk to work.





Analysis: Future development on adjacent and nearby properties.





# EXAMPLES OF ACTIVE PARK USES







Example: Wide promenade with informal seating.





Example: Play structures.





Example: Integrated play areas.





Example: Beach volleyball.





Example: Flexible-use plazas.





Example: Childcare center tot lot.





Example: Bicycle rental for Lei of Green tour.





Example: Bicycle trail.





Example: Surf lockers.





Example: Outdoor movie.





Example: Tree house.





Example: Interactive water feature.





Example: Interactive water feature.





Example: Interactive water feature.





Example: Solar-powered sculptural art.





Example: Interactive sculptural art.





Example: Interactive art exhibits.





Example: Solar-powered sculptural art.





Example: Science Center or an Exploratorium.





Example: Evening dance festival.





Example: Projected art shows.





Example: Sculptural art with evening light show.





Example: Projected lighting on building façade.



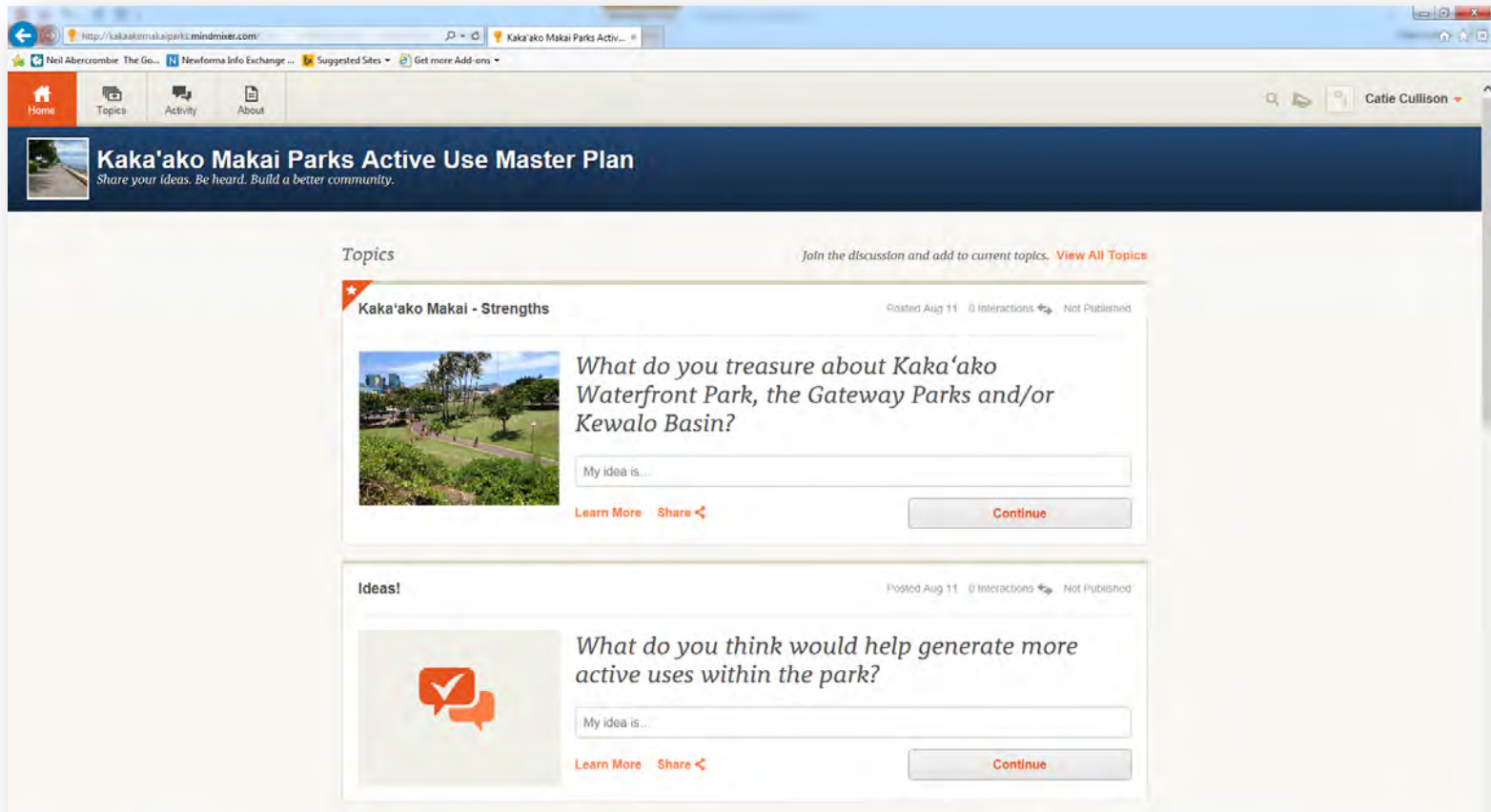


Example: Performance stage area.



# We welcome your ideas online!

<http://kakaakomakaiparks.mindmixer.com/>







# MAHALO!



KAKA'AKO WATERFRONT PARK | GATEWAY PARK | KEWALO BASIN PARK  
OPEN HOUSE AUGUST 28 & 30, 2014