

# Homelessness in Plain Sight in Kakaako Makai





# Two Faces of Olomehani Street

**After Stored Property Law is  
Enforced**



**Soon, If Not Immediately After  
Enforcement of Stored Property Law!**





# Two Faces of Ohe Street

**After Enforcement of the Stored  
Property Law**



**Soon After the Enforcement  
Team Has Left the Area!**





# Two Sides of a Thorny Issue

## Victims of Their Own Making!

- Why Can't They Take Care of Themselves?
- Their Presence Messes Up Our Streets & Parks!
- They Don't Clean Up After Themselves
- They Negatively Affect the Businesses in the Area!
- They Need to Get Themselves to Help & Services

## They're Just in Need of a Hand Up!

- Victims of Circumstances Beyond Their Control!
- They Don't Want to Be There Any More Than Any One Else!
- They Don't Have Any Place to Store Their Stuff!
- They've Been Chased Away From Everywhere They've Been
- The Only Luck They've Had Has Been Bad!



# Tents Overflow Onto the Streets!

**Olomehani Front Yard**



**Parked Cars are Included in the Encampment**





# Trash is a Health & Safety Issue

*Even if a Dumpster is Stationed in the Area & Emptied Daily*

**Koula and Ilalo Trash Site**



**Dump Site on Ohe Street**





# Not Just Household Trash But Includes Other Type of Stuff!



*Much Effort Has to be Put Forth to Combat the Trash & Clutter on the Streets*



# Health & Environmental Safety

***We Need to Bring the Homeless to Services & Not the Other Way Around!***

## **Even Good Deeds Have Consequences**

- **Homeless Feeding Programs at the Street are Popular**
  - *However, Many Times More Food is Distributed Than Eaten*
- **Uneaten Food & Trash End Up on the Ground and in the Storm Drains**
  - *Both Forms of Disposal Are Not Good for the Environment!*

## **Toilet Facilities**

- **Park Comfort Facilities are for All Users, But are Routinely Trashed!**
  - *Currently Open from 6 am to 10 pm*
  - *Serviced & Maintained by HCDA funds*
- **Poop is Routinely Left in Pails & Buckets on the Street**
- **Area Vegetation also Serves as Toilet**
  - *Creates Health Vectors*

# There Have Been Consequences for Area Stakeholders

## Vandalism at Look Lab



## Nasty Results at Children's Discovery Center & JABSOM



UNIVERSITY  
of HAWAII  
MĀNOA

John A. Burns School of Medicine  
Facilities Management Office, Kaka'ako

July 9, 2014

Anthony Ching, Executive Director  
Hawai'i Community Development Authority  
461 Cooke St.  
Honolulu, HI 96813

Aloha Mr. Ching,

The homeless population here at Kaka'ako near the University of Hawai'i John A. Burns School of Medicine has noticeably increased over the last month. Commensurate with this increase is a growing concern over the health and safety for our employees and students.

Of late, our security guards have noted frequent late-night drinking, street-level activity and loud arguments emanating from the tents erected across the street from our location. The contracted JABSOM security guards have been directed to call 911 when conditions warrant a police presence. Over the 4<sup>th</sup> of July weekend JABSOM security reported the police were on site at the encampment twice, once with an ambulance.

University of Hawaii employees have expressed qualms about driving through the areas as they often see small children running and playing in the streets. They are afraid a child may run out in front of their car. Complicating matters further are an influx of inebriated pedestrians ambling along the streets located along the perimeter of JABSOM.

On windy days loose articles are blown across the street onto our property. Milk cartons, plastic bags and papers are a few of the items that have blown onto our property. Our landscapers take pride in the hard work needed to keep our grounds clean. They continue to put in extra effort to maintain the cleanliness of the area fronting our facilities due to the litter.

As the number of tents increase around our school it also brings a negative image of our school to potential students and researchers. The John A. Burns School of Medicine is a fine school. Potential students are taken aback by the surroundings when they come to our school for their application interviews. Researcher recruits would only have to search the internet to find we have this problem right outside of our front door. This image of JABSOM is not conducive to fostering a favorable impression of our school and jeopardizes our ability to recruit the highest caliber of applicants.

It was reported on the July 2, 2013 broadcast of Hawai'i News Now on how some of our employees feel about having to walk past these tents daily. Some have changed their working hours to avoid walking in the area at night. The present situation impacts negatively on the safety, sanitation and overall well-being of our Kaka'ako community, including but not limited to JABSOM. As the camp remains and even grows in size and density, it is increasingly grating on the nerves of neighboring residents and those who wish to enjoy the parks, Children's Discovery Museum, 53 By The Sea, or even just wish to park a car or use the sidewalks. We have received complaints about the smell of urine and feces as you walk through



# There Have Been Consequences for Area Stakeholders

## Gateway Park Comfort Station Burnt Down



## Crime on the Streets

- Violence on the Street – Stabbings and Domestic Abuse
- Homeless Living in Cars on Coral Street Suspected of Drug Trafficking
  - *Sheriff's Raid Cleared the Street in 2009, But Recently – They're Back!*
- Sheriffs Thwart Bid to Steal Copper Water Lines at Fishermen's Wharf Loading Dock
- Several Reports of Theft of Equipment from Vessels at Kewalo Basin Harbor





**Backflow Preventers Routinely Damaged for Water Even When Boxed**





**Toilet Facilities Are Hard Hit!**



# There's Blood on the Streets!

*Not a Place for Anybody Let Alone Women & Children!*

Consequences of a Recent  
Stabbing



Results of Violence





# **What's the Community to Do Here?**

***Help & Shelter Are Necessary First Steps!***

## **Need to Get Help!**

- **Some Need to Get Identification & Paperwork to Access Services**
- **Some Need to Get Mental Health or Substance Abuse Help**
- **Need Support to Get Help & Stay on the Straight & Narrow!**
- **A Job is Necessary for Each to Sustain Themselves & Build Self Confidence**
- **Work Training & Education Can Go a Long Way!**

## **Need Shelter First!**

- **There is No Way to Dress Up a Tent on the Street**
- **First Stop = Emergency Shelter**
- **Security Deposit & Affordable Rents are Necessary**
- **Transitional Housing w/ Supportive Services is Next**
- **Independent Living Needs a Job and Consistency to Ensure that the Rent Gets Paid!**

***Homelessness is not Good for the Homeless or the Community!***

# Housing Reality Check

## There is a Severe Shortage of Housing for all Residents

- In 2014, There were over 6,000 New Households Formed in Hawaii
  - Over 3,500 Households were formed on Oahu alone!
- In 2014, only 800 Building Permits were Pulled
- This Contributes to the Severe Shortage of Housing for All Residents
  - The Short Supply of Housing Drives Up Costs for Rental and For-Sale Housing

## Housing Ladder for the Homeless in Plain Sight

- **The Streets**
- **Living Out of Cars**
- **Emergency Shelter**
  - Tenancy is Day-to-Day
  - Priority for Women & Children
- **Transitional Shelter**
  - Limits on Stay (2 years)
- **Group Homes**
- **Independent Living**

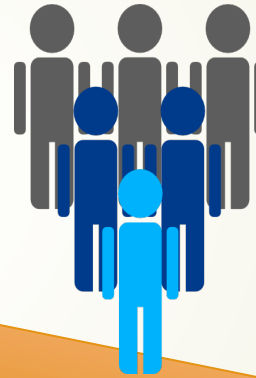
*Rules Apply – No Drugs,  
Alcohol or Fighting*



# We're Not Building Enough Housing for Our Population!



**SUPPLY**



**DEMAND**

**Each Year We  
Need 3,300  
New Housing  
Units**

**There Were  
Only  
800 New  
Housing Starts  
in 2014**

# There Are As Many Types of Housing As There Are People!

## Qualified Income Housing *As Subsidized or Required By Government*



## Market Housing *Willing Buyer/Willing Seller*



***We Need All Types of Housing!  
Both Qualified Income & Market Housing***



# How Our Finances Affects Our Housing Status!

- The Housing Ladder Represents the Range of Our Housing Opportunities
- We All Need A Place on the Housing Ladder
- As Our Financial & Personal Situation Changes Over Time, We Might Find Ourselves Moving Up or Down on the Ladder





# **We Must All Be A Part of the Solution!**

**HCD A Isn't a Social Service Agency**

*Redevelopment Agency w/Specific Scope*

**However We Work w/State, City & Non-Profits**

*To Coordinate Efforts & Maximize Results*

**As An Agency, We Steward Our Resources & Try to Find Stop  
Gaps in the Face of a Growing Community Problem**

*Balance Carrot & Stick Approach*

*Made Our Lands & Resources Available*

*Assist Others in Connecting People w/Services*



# **It's A Community-Wide Problem!**

**We Must Solve the Housing Problem for All Residents – Not Just for the Homeless**

**Given the High Value of Real Estate Throughout Our Community**

***Recognize NIMBY Values Hurt All***

***Neighborhoods are Reluctant to House Shelters, Transition Housing or Group Homes (if publicized)***

**Even With Funding Where Are These Facilities to be Established or Constructed?**

**There is a Ban on Residential Development in Kakaako Makai**



# HCDA

## *What Have We Been Doing Since 2008?*

### Carrots

- **Jobs Training Program**
  - Parks Trash Pick-Up (2x/Day)
  - Service Parks Comfort Stations
- **Security Deposit Program**
  - Match Jobs Training and Next Step Refund ≤\$800
- **MWF Laundry & Shower Program**
- **Position Dumpster in the Area**
- **Street Outreach Conducted by Next Step Residents**
- **Support for Outreach Events**
  - Life 360 Life Tutor Program

### Sticks

- **Enforce Park Rules Prohibiting Camping in the Park**
- **Enforce Ban on Trespassing on Private Property**
- **Regular HCDA Regulatory Outreach**
- **Planter Box & Interpretive Trail Planned to Block Sidewalk Camping**
- **Establishing Enforcement Presence at Look Lab**



# HCDA Past Programs

## Program Initiatives

- Evans Angel Bus Emergency Shelter for ≤50 individuals & families
- Targeted COFA Language Outreach
- Assistance w/Securing Identification & Processing Program Applications
- Job Training Programs
- Veteran's Outreach
- Gateway Park Comfort Station



## Challenges

- Program Financing
- Maintaining a Site in Town
- Many Do Not Read or Write in Own Language
- Have Difficulty w/ Applications & Interviews
- Consistency w/Attendance & Personal Hygiene
- Vet Lack of Service Record or Dishonorable Discharge
- Facilities Burnt Down!



# Reality Check in Kakaako Makai

- Value of Waterfront Lands Heightens Development Pressure
  - *Development Planning & Construction is Underway*
- Area is City-Wide Gathering Place
  - *Commercial Small Boat Harbor*
  - *44 Acres of Makai Park Lands*
  - *JABSOM & Cancer Research Center*
  - *Waterfront Promenade*
  - *Surf Sites*
- Pre-School & Senior Center is Coming to the Makai Area
- Yet Many Streets Have Been Overrun by the Homeless!
- **We Need to Take Our Streets Back!**



# What Can We Do?

- Clear the sidewalks, remove homelessness from the streets!
  - Where will the homeless go?
- Leave the homeless alone and allow them to shelter in place
  - What does this mean for area businesses?
  - Park Users and Public Safety?
- Expand shelter space to offer new solutions for homeless individuals and families
  - Where? Who Pays?



# Community Action Strategy

- **Community-Wide Planning & Action Needed**
  - *All Neighborhoods & Not Just Kakaako Makai Must Be “Part of the Solution”*
- **Housing of All Types Must Be Constructed!**
  - *Rental and For-Sale*
  - *Shelter, Transitional, Group, Qualified Income & Market*
- **The Public Health Safety Net Must Be Repaired**
  - *Years of Erosion in Funding Leaves Gaps*
  - *Services/Programs Must Be Performance Driven*
- **Laws Protecting the Landowner/Business as well as the Homeless Must Be Enacted**
  - *Simple Trespass Laws Are Not Effective!*



# Other Programs & Strategies

## *Regional Design For Connecting Community*

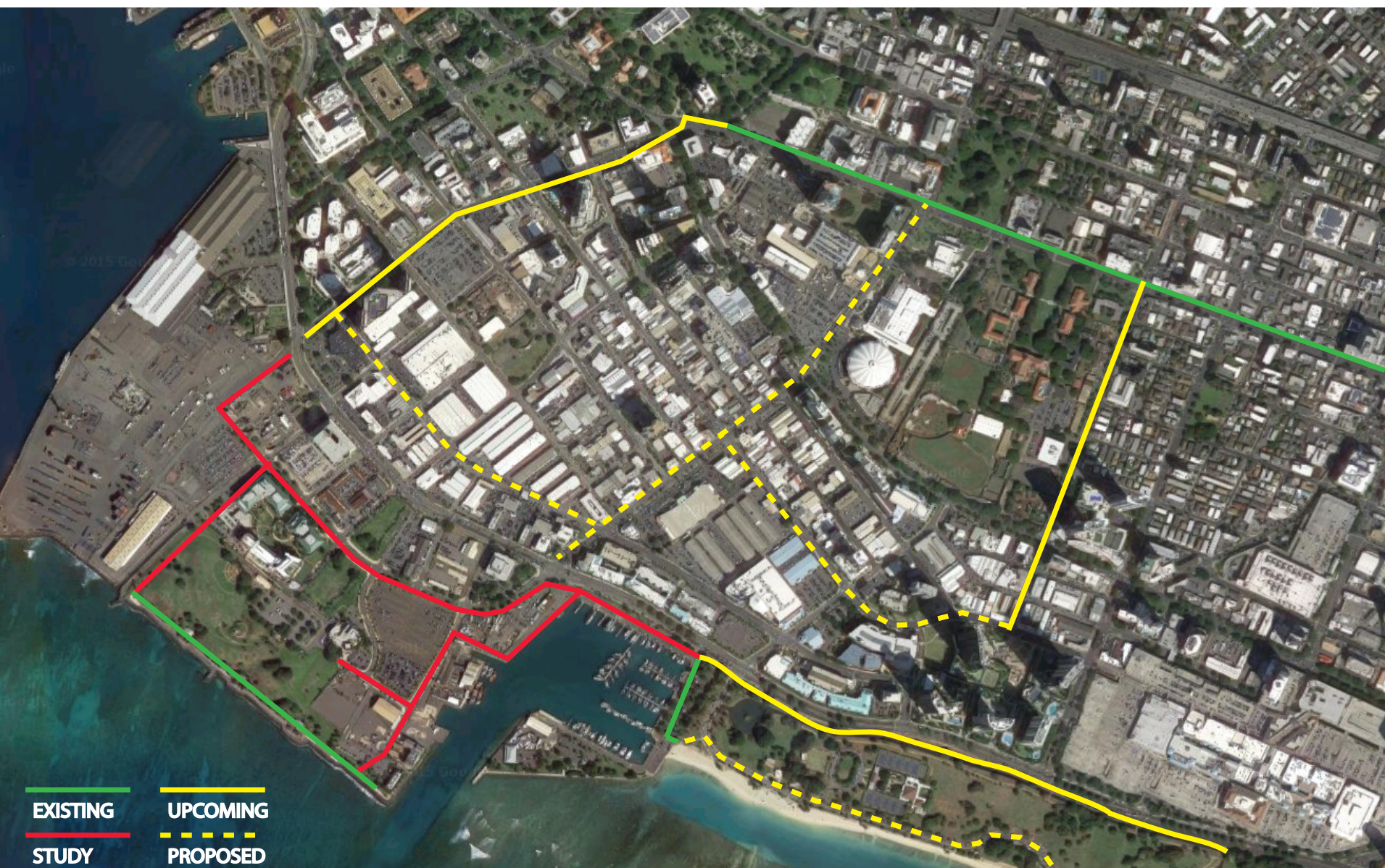
### Build for the Community

- **Wide Sidewalks & Enhanced Pedestrian Facilities**
  - *Designated Pedestrian & Bike Facilities Instead*
  - *Landscaping Techniques to Discourage Camping on the Medians That Instead Beautify*
  - *Sidewalks Should Connect Places & Not Become the Homeless Subdivision!*
- **Complete Streets**
  - *Landscaped*
  - *Pedestrian Oriented*

### Ideas/Initiatives

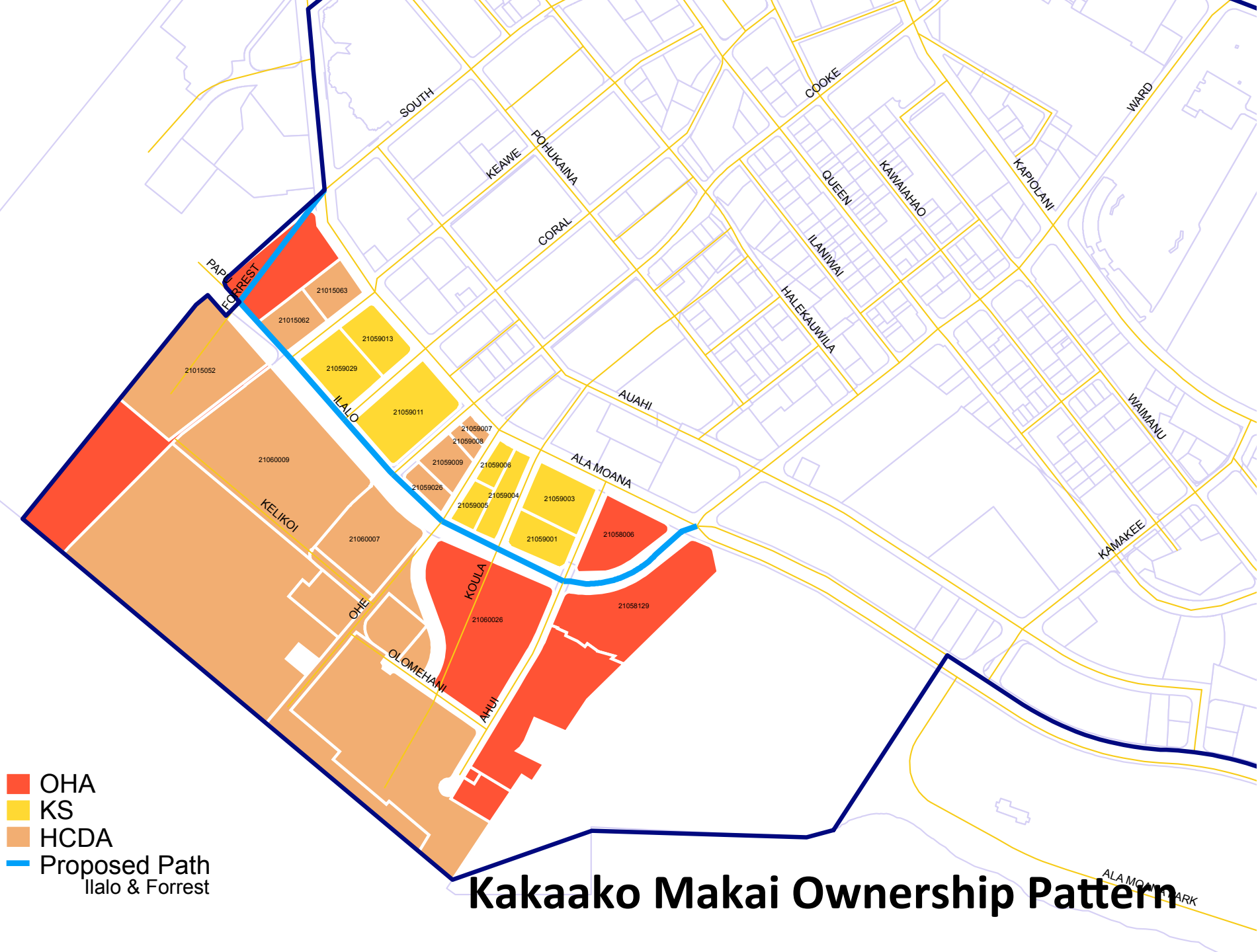
- **Cultural Trail From Blaisdell to Point Panic**
  - *Festival Banners*
  - *Planters, Art & Interpretative Signage*
- **Bike Path/Pedestrian Trail From Waikiki Thru Kakaako to the Civic Center**
  - *Connect Ala Moana Park via Ilalo to Waterfront Parks*
  - *Connect Path to C&C Bike Trail*





## Bike Path Connection Strategy





- OHA
- KS
- HCDA
- Proposed Path  
Ilalo & Forrest

# Kakaako Makai Ownership Pattern

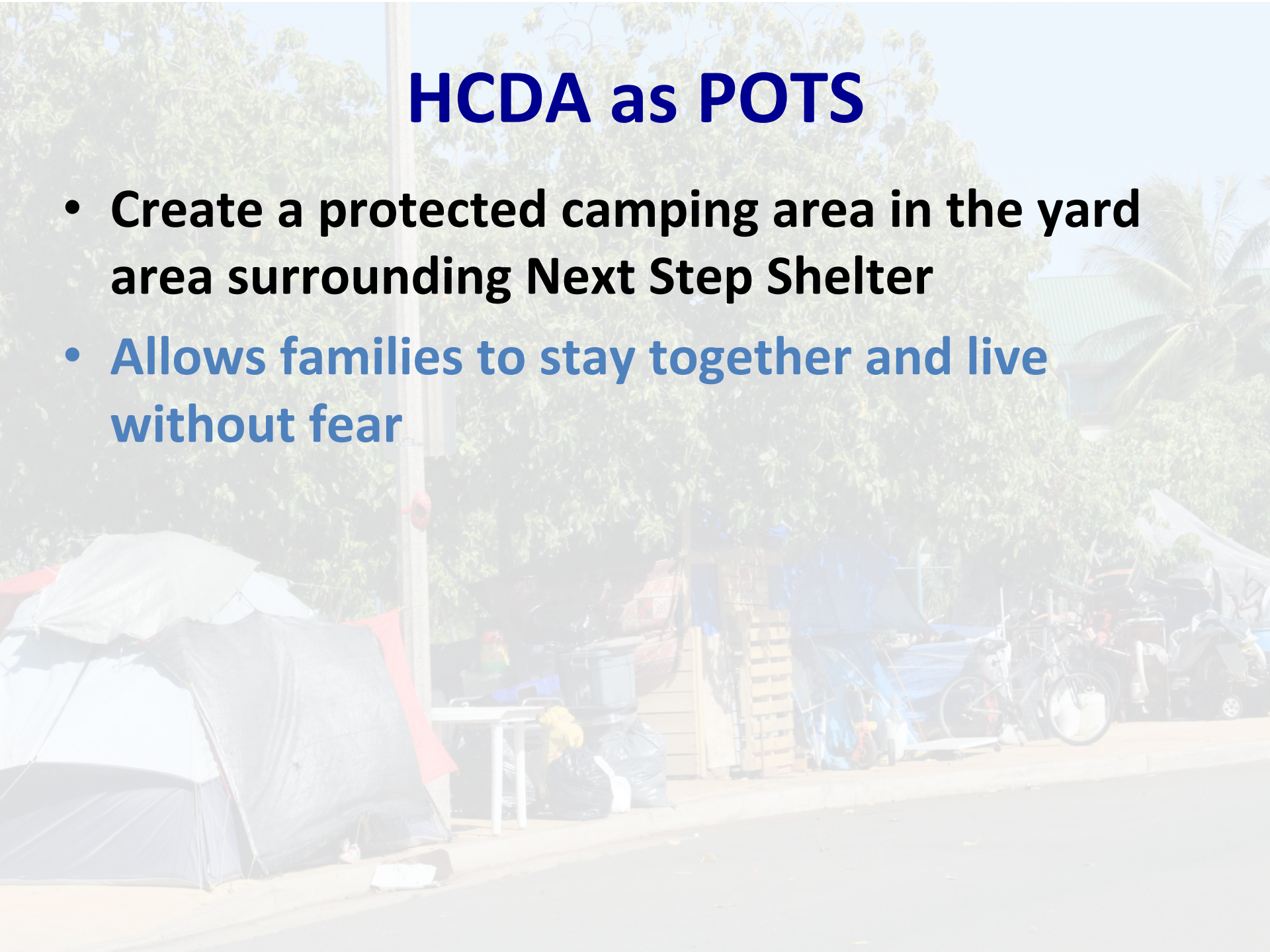
# **Need to Enhance Existing Community Service Centers Not Just Look For Others**

- **Services and Capacity at Next Step Shelter Should Support Bringing Area Homeless to Services and Off of the Street**
  - *We Shouldn't Try to Serve the Homeless on the Streets*
- **Expanded Services at Next Step Include**
  - *Expanded # of Beds*
  - *Toilet, Laundry, Storage Facilities Available 7 Days/Week to All Comers on site*



# HCDA as POTS

- Create a protected camping area in the yard area surrounding Next Step Shelter
- Allows families to stay together and live without fear





# HCDA as POTS

- Underwrite expenses associated with increasing area infrastructure to support sprung structures in Next Step yard area
  - Creates more stable living situations
  - Can double the capacity of Next Step Shelter





# HCDA as POTS

- Establish community partnerships with faith based organizations to offer childcare at Next Step Shelter during daytime hours
  - Allows parents to work without worrying about the cost of childcare or safety of children





# HCDA as POTS

- Establish community partnerships with nonprofit groups to offer life coaching to school-aged children
  - Education is the foundation for students to turn their lives around
  - Night time tutoring and mentoring keep students focused on education and out of trouble





# HCDA as POTS

- **Conduct an infrastructure assessment around Next Step Shelter to determine what additional facilities may be supported**
  - Can use self-contained facilities in the interim until water/electric capacity can be clarified

