

# KEY MAP

OCTOBER 24, 2012

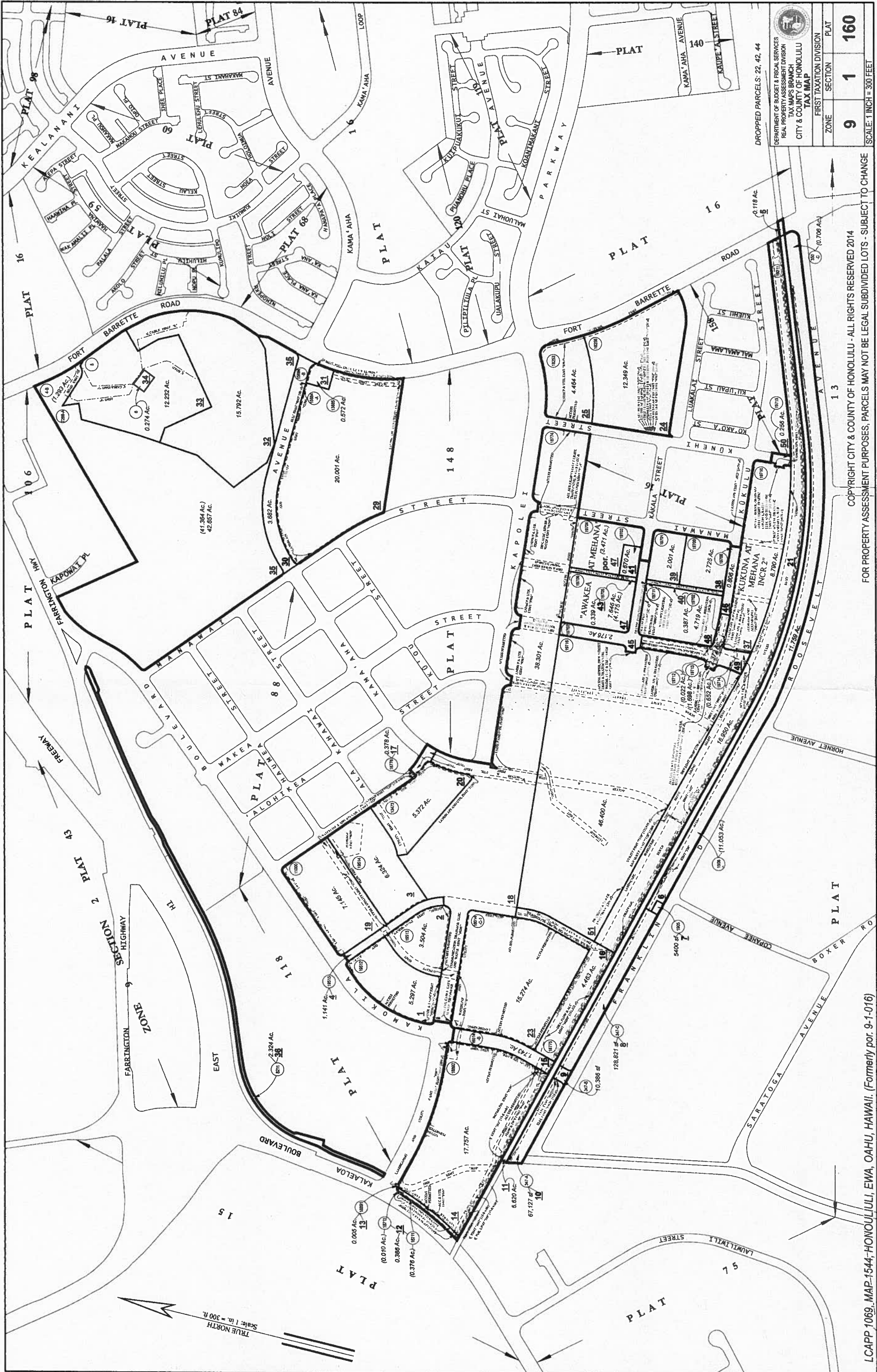
17" X 11" = 1.3 Sq. Ft.

CONTROLPOINT SURVEYING, INC.  
 1150 South King Street, Suite 1000  
 HONOLULU, HAWAII 96814

TMK: 9-1-1-16

PR: 12017-13.DWG

Exhibit A



DEPARTMENT OF BUDGET & FISCAL SERVICES  
REAL PROPERTY TAX MAPS DIVISION  
TAX MAPS BRANCH  
CITY & COUNTY OF HONOLULU  
TAX MAP

DROPPED PARCELS: 22, 42, 44

ZONE	SECTION	PLAT
9	1	160

FIRST TAXATION DIVISION

FOR PROPERTY ASSESSMENT PURPOSES, PARCELS MAY NOT BE LEGAL SUBDIVIDED LOTS - SUBJECT TO CHANGE

LCAPP 1069, MAP-1544, HONOLULU, EWA, OAHU, HAWAII. (Formerly par. 9-1-016)

