

City & County of Honolulu Complete Streets Program



August 2nd, 2017 | Hawaii Community Development Authority
 Michael Packard, P.E., PTOE | Complete Streets Administrator

BIKE NETWORK 2020 DRAFT



05/25/2017



COMPLETE STREETS PROGRAM

Department of Transportation Services

650 South King Street, 2nd Floor, Honolulu, HI 96813-3017

E-mail | completestreets@honolulu.gov

Website | www.honolulu.gov/completestreets



BIKE NETWORK 2020 DRAFT



05/25/2017

HONOLULU
COMPLETESTREETS Program



COMPLETE STREETS PROGRAM

Department of Transportation Services
 650 South King Street, 2nd Floor,
 Honolulu, HI 96813-3017

E-mail | completestreets@honolulu.gov
 Web | www.honolulu.gov/completestreets



**McCully Street Bike Lanes
January 30, 2017**



**South Street Bikeway
May 3, 2017**

HONOLULU
COMPLETESTREETS *Program*

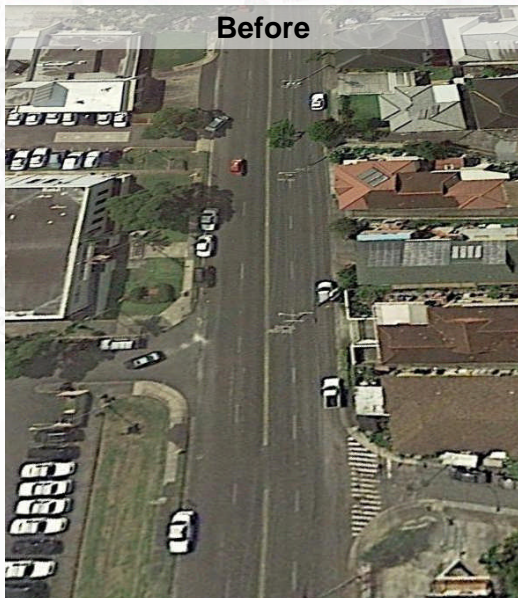


COMPLETE STREETS PROGRAM

Department of Transportation Services
650 South King Street, 2nd Floor
Honolulu, HI 96813-3017

E-mail
Web

completestreets@honolulu.gov
www.honolulu.gov/completestreets



Before



After

Kamehameha IV Road Right Sizing (April 2016)

HONOLULU
COMPLETESTREETS *Program*



COMPLETE STREETS PROGRAM

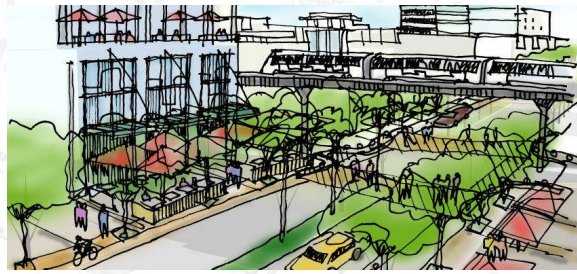
Department of Transportation Services
650 South King Street, 2nd Floor
Honolulu, HI 96813-3017

E-mail
Web

completestreets@honolulu.gov
www.honolulu.gov/completestreets

The Opportunity: Urban Honolulu is Transforming

- ✓ Rail
- ✓ Transit Oriented Development
- ✓ Housing Crisis
- ✓ Increased Density
- ✓ Infrastructure Improvements
- ✓ Bike Share



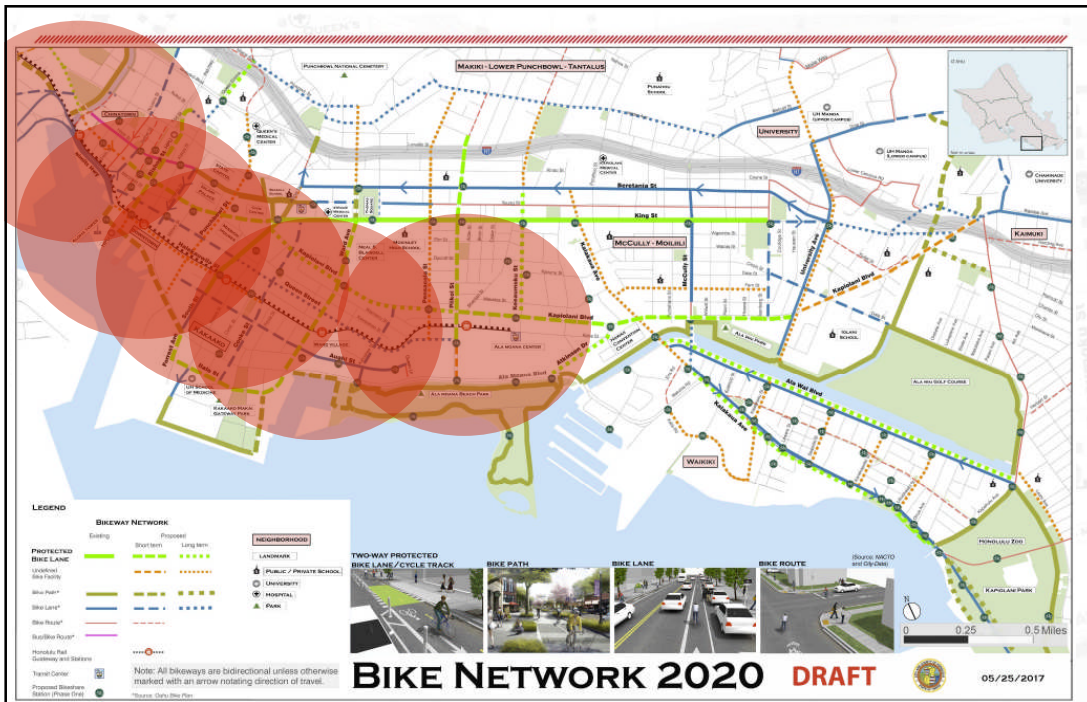
HONOLULU COMPLETESTREETS Program



COMPLETE STREETS PROGRAM

Department of Transportation Services
650 South King Street, 2nd Floor
Honolulu, HI 96813-3017

E-mail: completestreets@honolulu.gov
Web: www.honolulu.gov/completestreets



HONOLULU COMPLETESTREETS Program



COMPLETE STREETS PROGRAM

Department of Transportation Services
650 South King Street, 2nd Floor
Honolulu, HI 96813-3017

E-mail: completestreets@honolulu.gov
Web: www.honolulu.gov/completestreets

The Need: Who Benefits?



Complete Streets supports:

- ✓ Public Health
- ✓ Transportation Equity
- ✓ Smart Growth
- ✓ Economic Development
- ✓ Safety and Accessibility

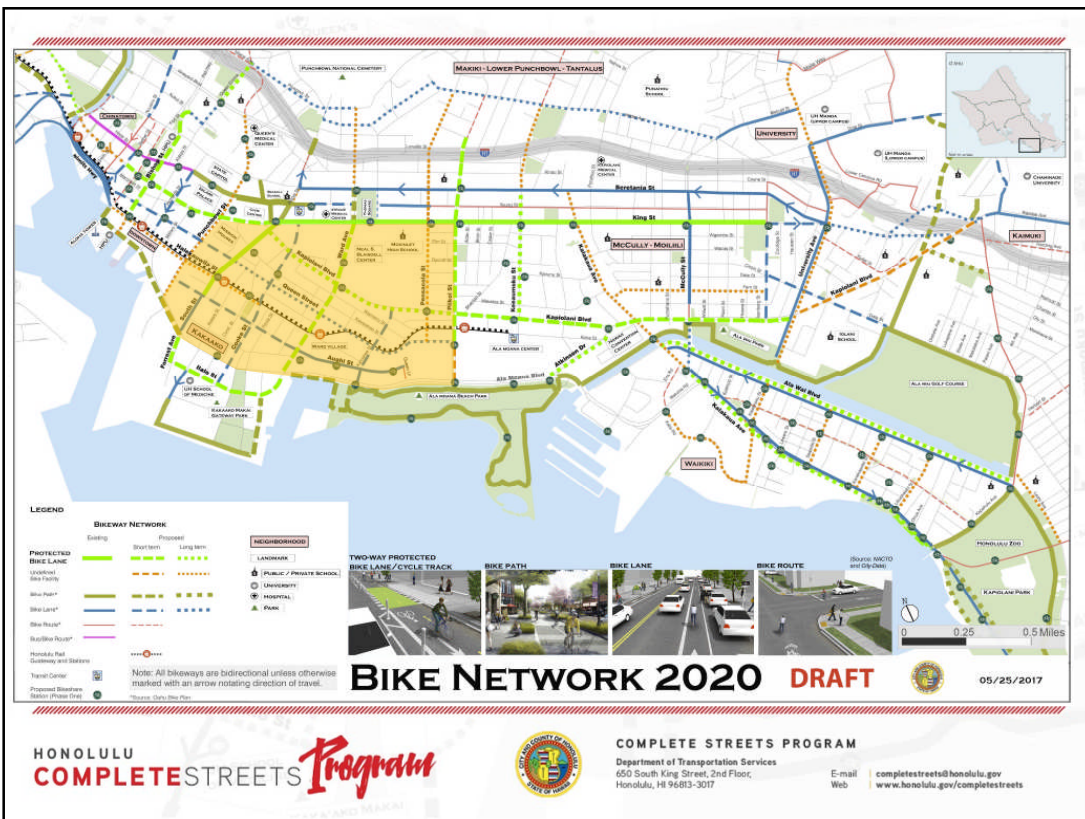
HONOLULU COMPLETESTREETS Program



COMPLETE STREETS PROGRAM

Department of Transportation Services
650 South King Street, 2nd Floor
Honolulu, HI 96813-3017

E-mail: completestreets@honolulu.gov
Web: www.honolulu.gov/completestreets



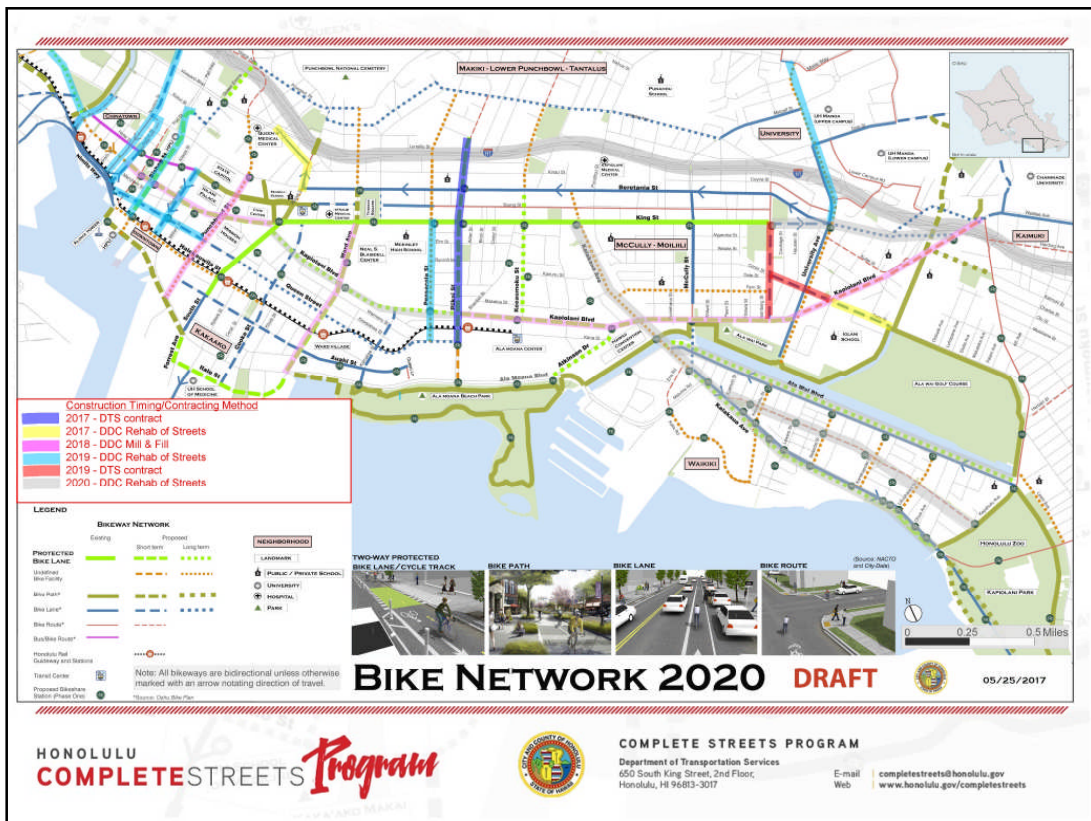
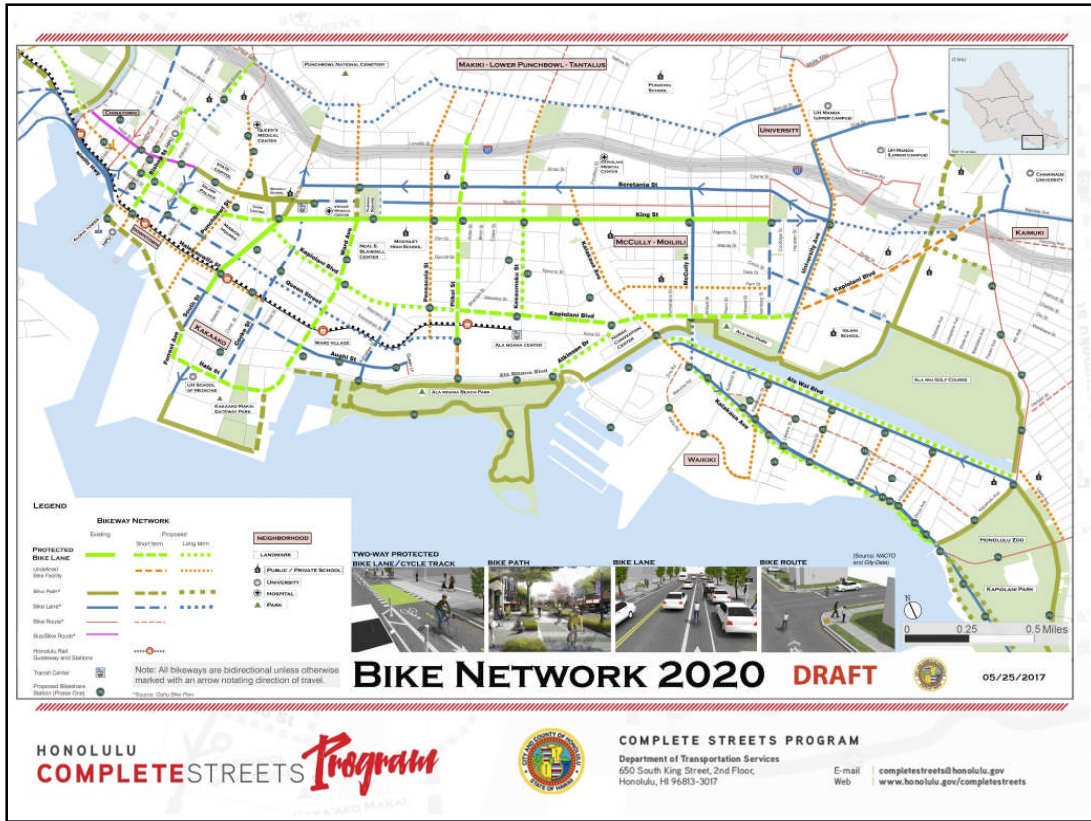
HONOLULU COMPLETESTREETS Program

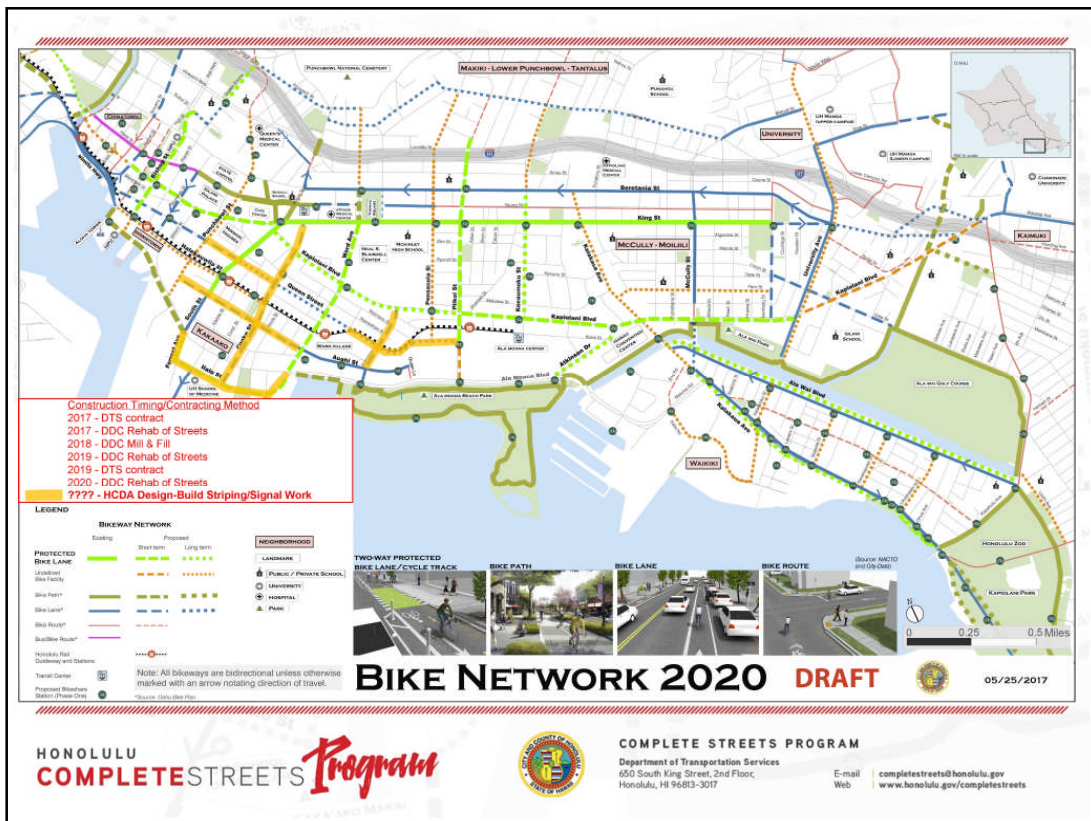
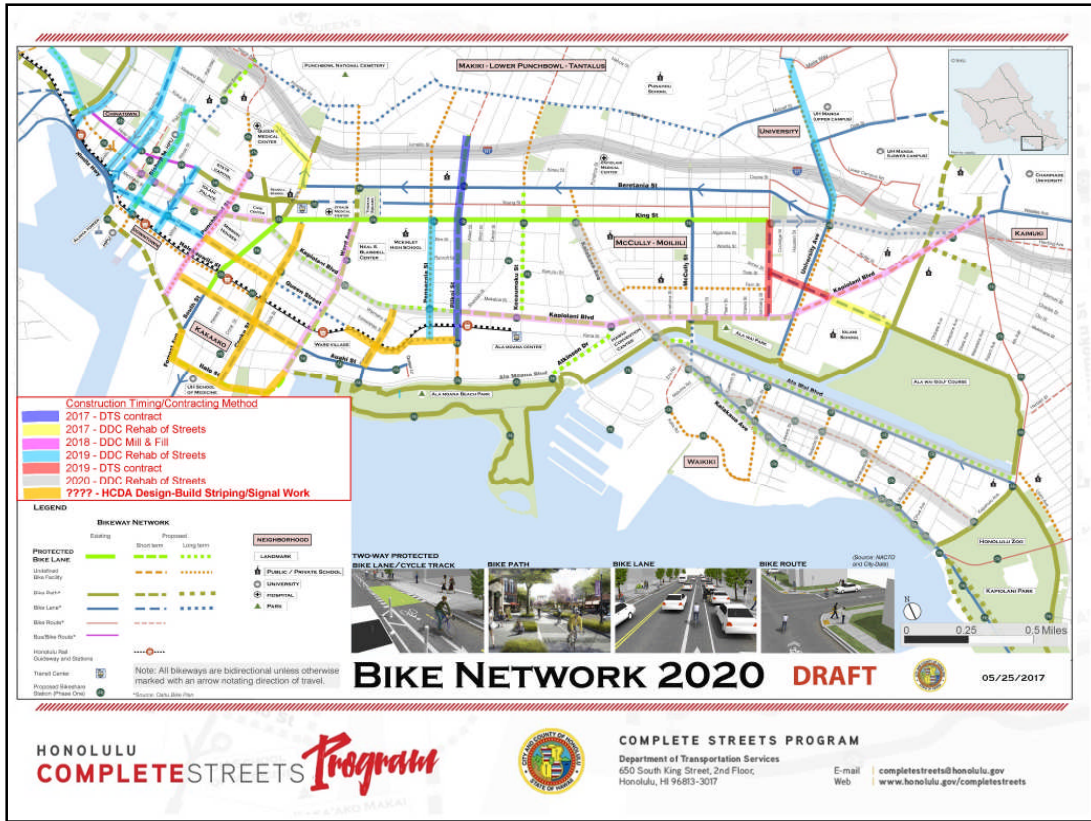


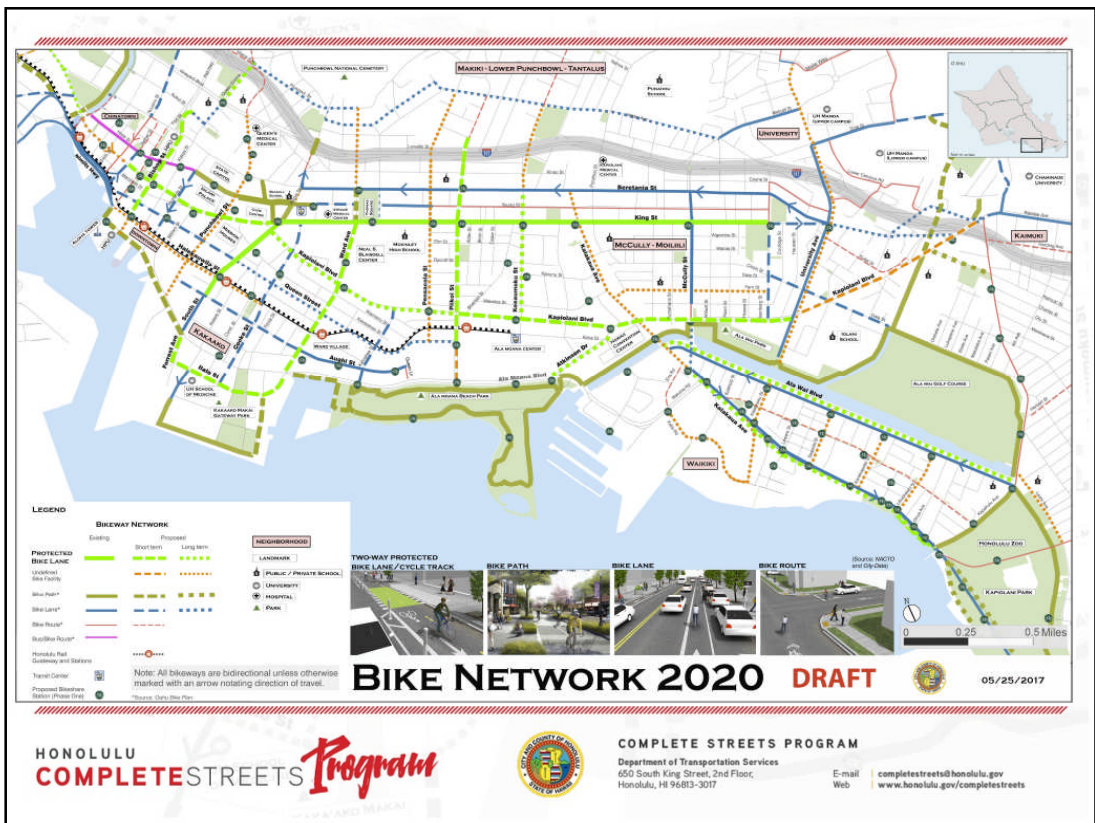
COMPLETE STREETS PROGRAM

Department of Transportation Services
650 South King Street, 2nd Floor
Honolulu, HI 96813-3017

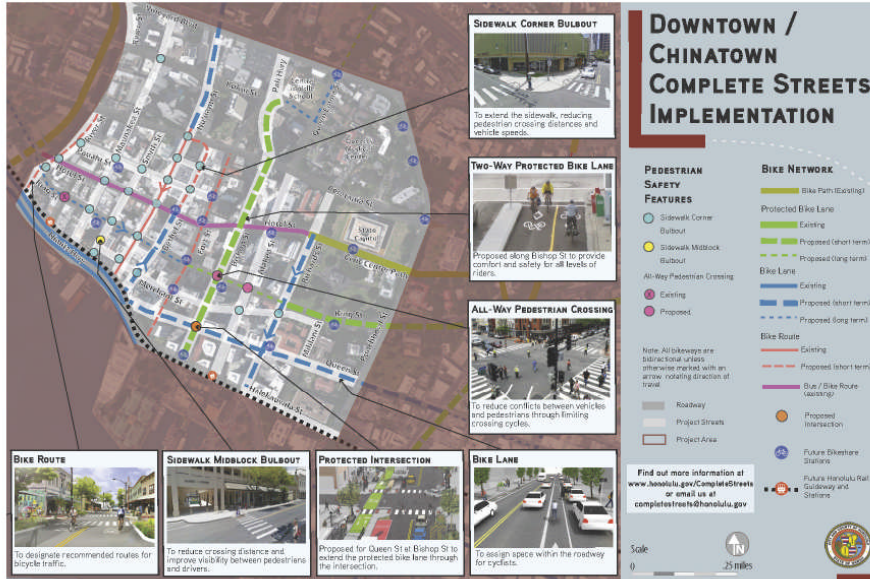
E-mail: completestreets@honolulu.gov
Web: www.honolulu.gov/completestreets







Downtown/Chinatown Complete Streets Program



DOWNTOWN/CHINATOWN **COMPLETESTREETS** Implementation

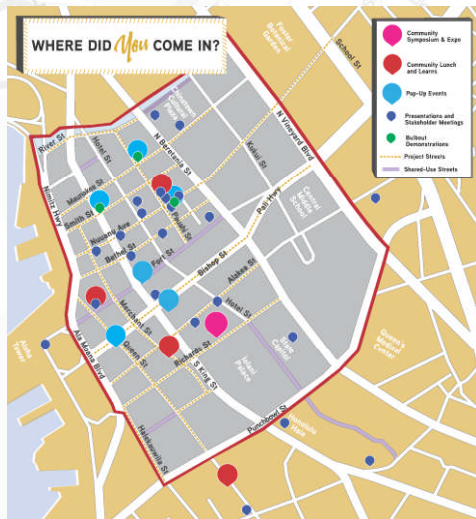


COMPLETE STREETS PROGRAM

Department of Transportation Services
650 South King Street, 2nd Floor
Honolulu, HI 96813-3017

E-mail: completestreets@honolulu.gov
Web: www.honolulu.gov/completestreets

Downtown/Chinatown Complete Streets Program



DOWNTOWN/CHINATOWN **COMPLETESTREETS** Implementation



COMPLETE STREETS PROGRAM

Department of Transportation Services
650 South King Street, 2nd Floor
Honolulu, HI 96813-3017

E-mail: completestreets@honolulu.gov
Web: www.honolulu.gov/completestreets



HONOLULU

COMPLETE STREETS

Program

MAHALO

CONTACT INFORMATION

Michael Packard, P.E., PTOE
Complete Streets Administrator
Department of Transportation Services
City and County of Honolulu
Michael.Packard@Honolulu.gov
768-8326

FOLLOW US

Join the E-mail List at
www.Honolulu.gov/completestreets

Facebook: @hnlcompletestreets



COMPLETE STREETS PROGRAM

Department of Transportation Services
650 South King Street, 2nd Floor
Honolulu, HI 96813-3017

E-mail: completestreets@honolulu.gov
Web: www.honolulu.gov/completestreets