

VICTORIA PLACE

PERMIT NUMBER KAK 19-069

Howard Hughes

 WARD VILLAGE



EXHIBIT V



The pathways once traversed by our ancestors are the same paths we should follow toward success.
Just as Victoria Ward cared for her beloved land and people, so do we.



The Howard Hughes Corporation, Victoria Ward Limited





KAK 13-038
KE KILOHANA
(Completed)

KAK 16-075
A'ALI'I
(Under Construction)

SOUTH SHORE MARKET
(Completed)

KAK 14-074
AE'O
(Completed)

KAK 13-037
ANAHA
(Completed)

KAK 18-038
KŌ'ULA
(Construction
to start 2019)

VICTORIA WARD PARK
(Mauka) (Constructed)

FUTURE HART
RAIL CORRIDOR

LAND
BLOCK 1

MUZ 16-00
WARD ENTERTAINMENT
CENTER
(Completed)

MUZ 95-04
WARD VILLAGE SHOPS
& District Parking Garage
(Completed)

VICTORIA WARD PARK
(Makai) (Constructed)

LAND
BLOCK 2

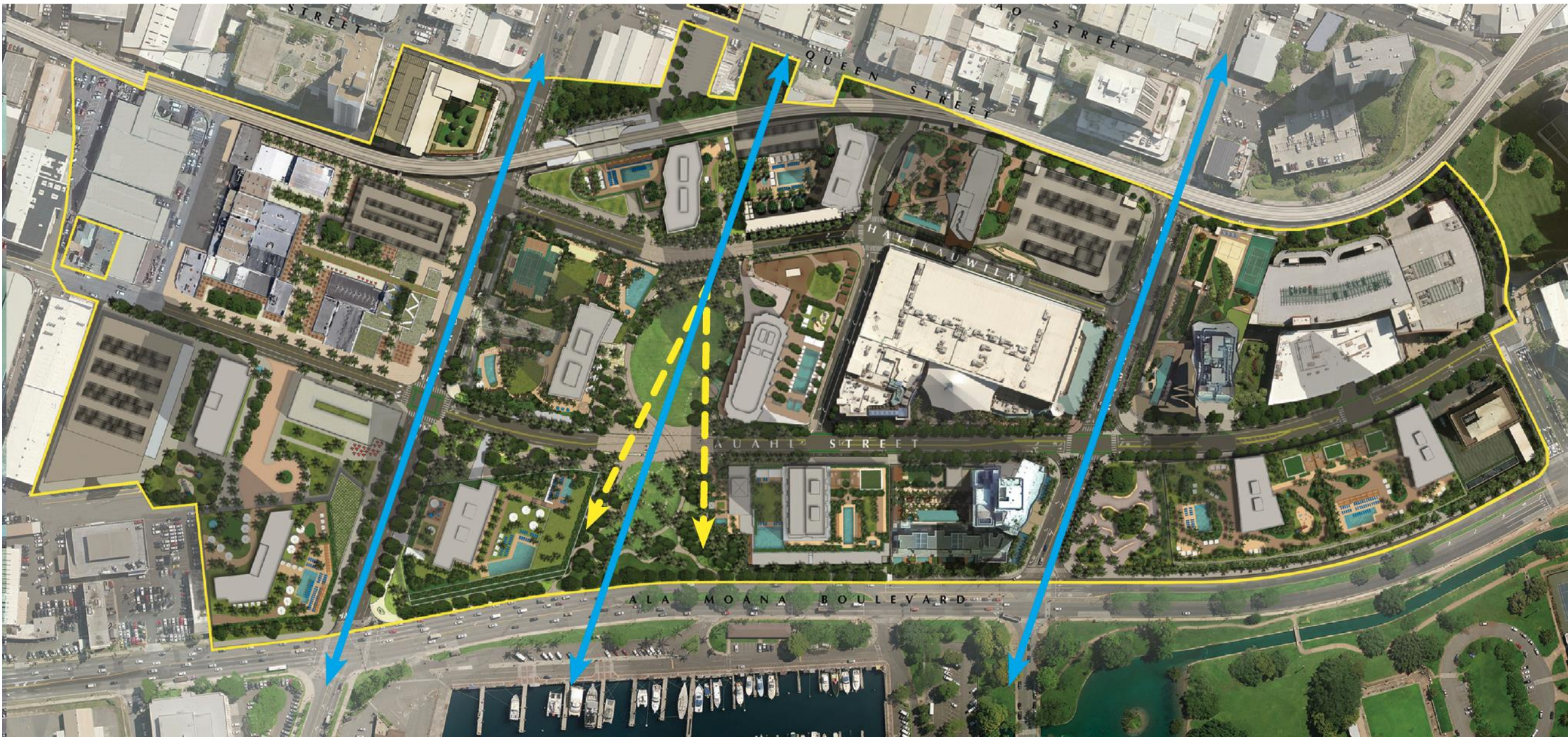
KAK 14-066
GATEWAY
(KAK 14-066 to be withdrawn
upon approval of Victoria Place)

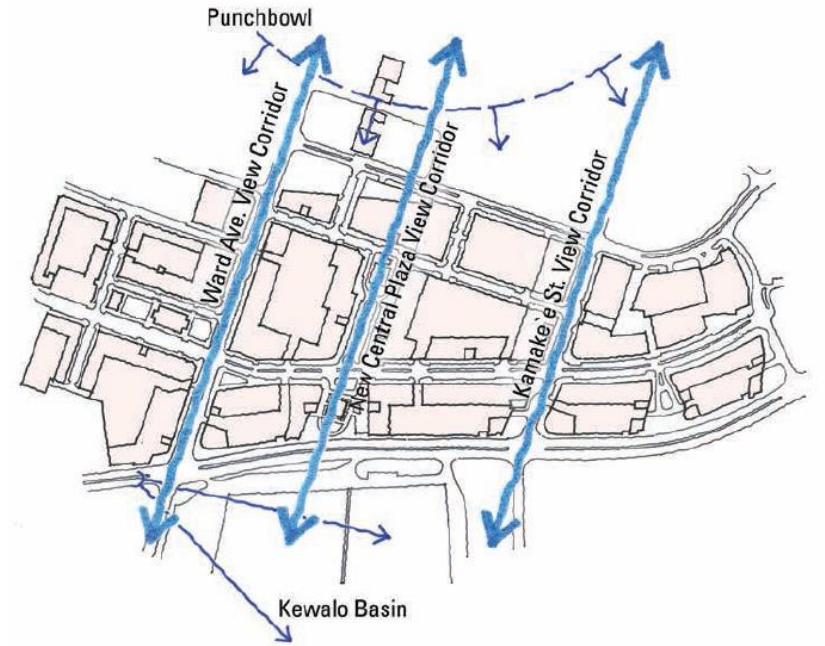
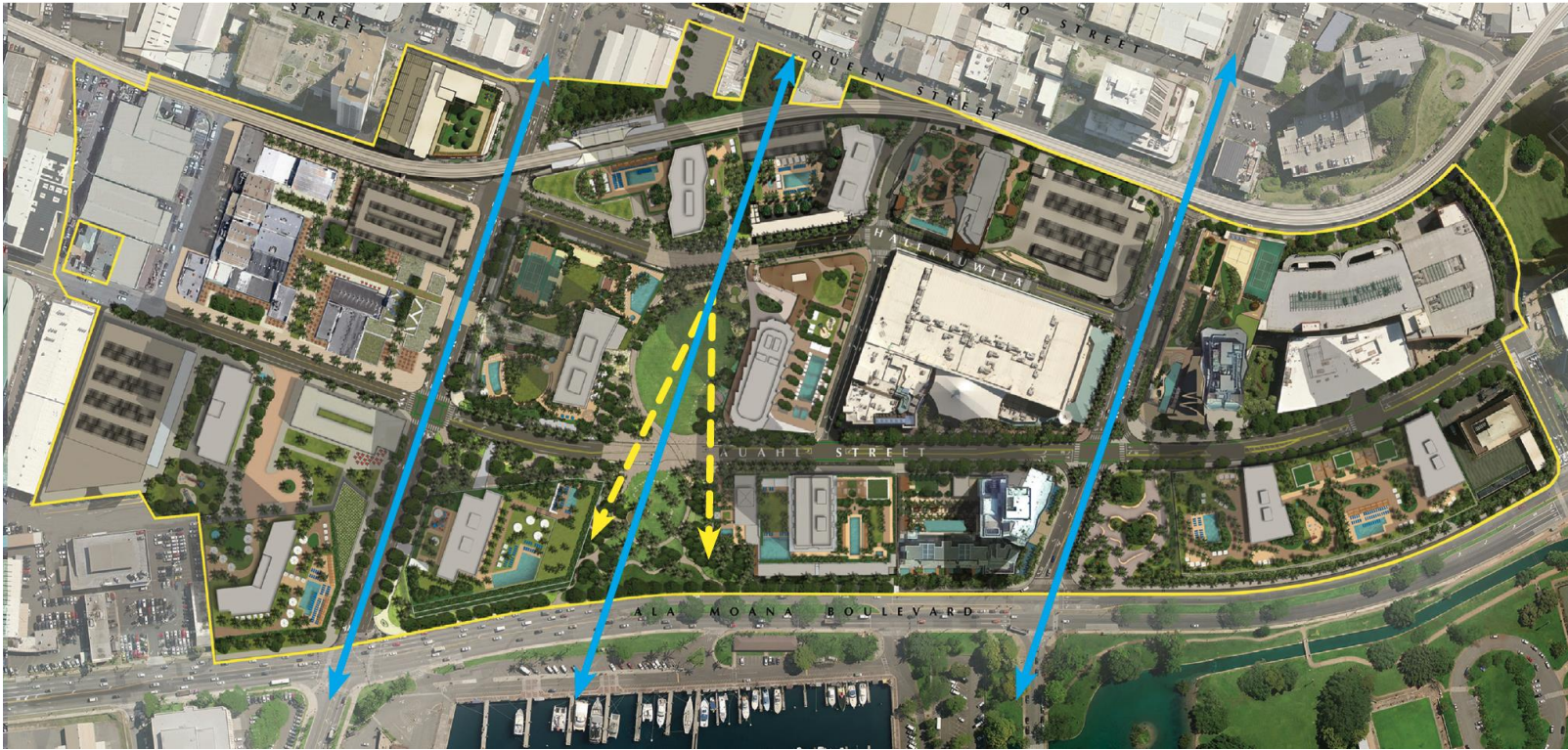
KAK 13-036
WAIEA
(Completed)

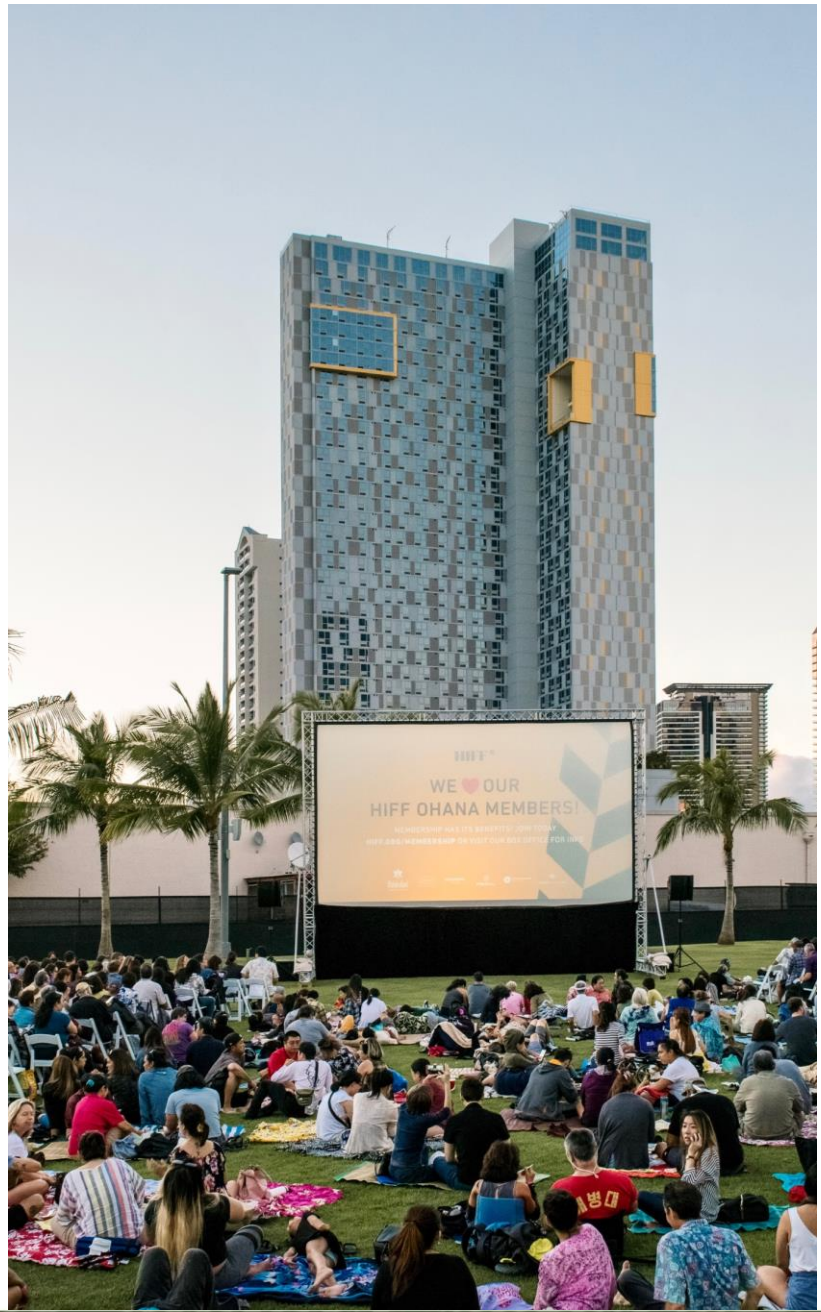
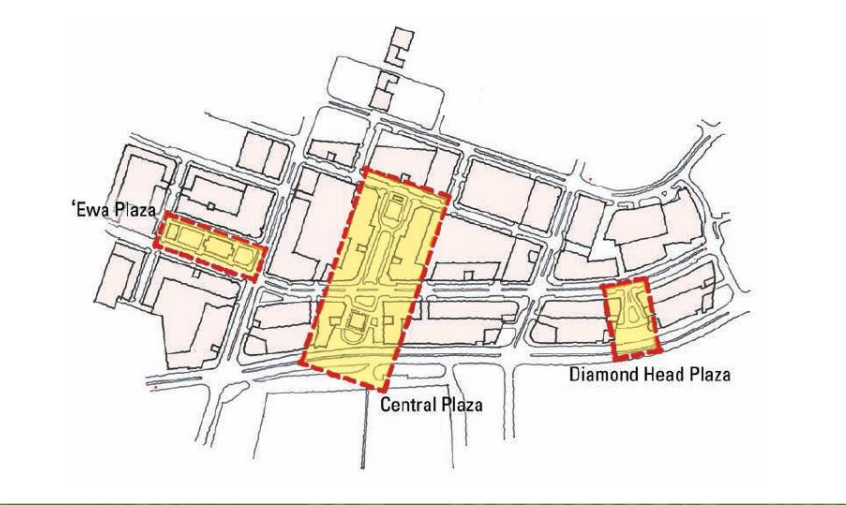
IBM BUILDING
(Renovation
Completed)



Mauka-Makai View Corridors





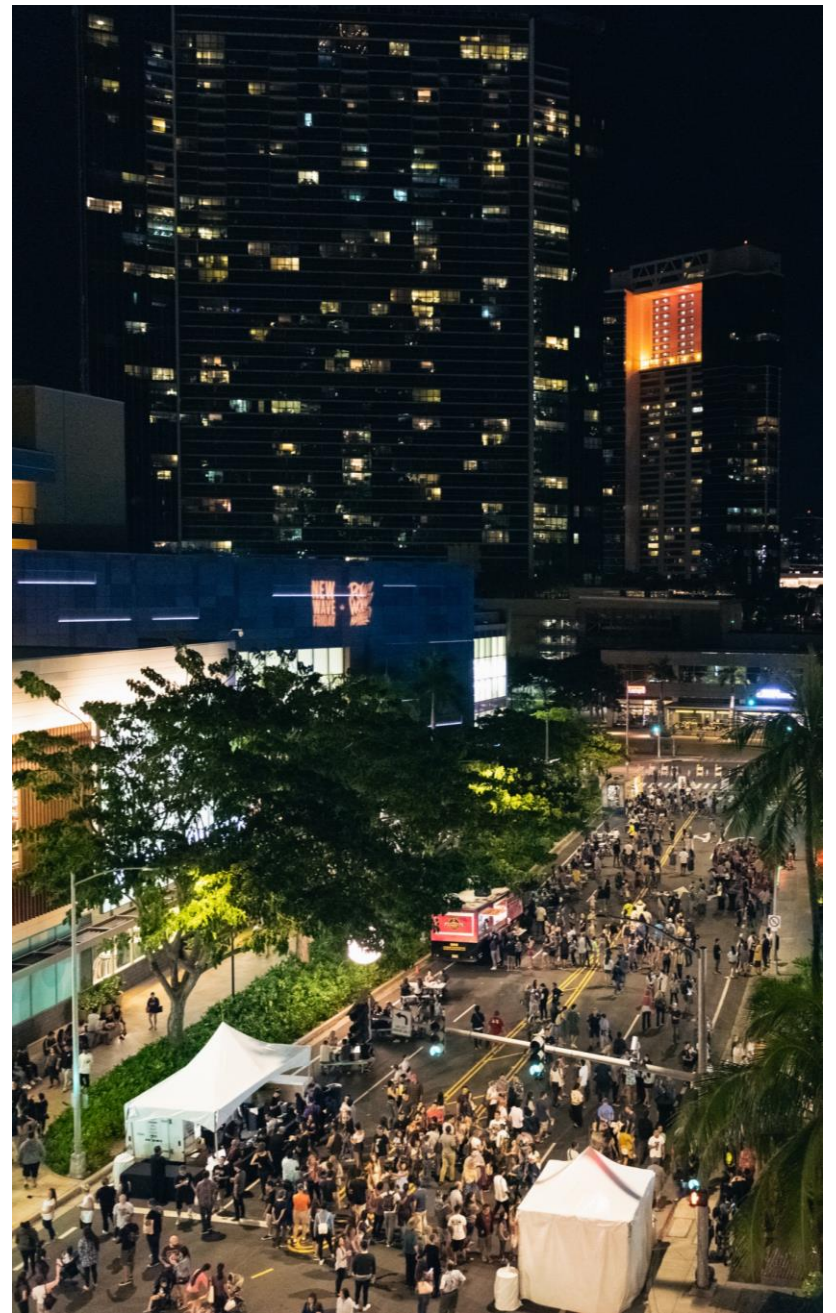












Street Sections - Auahi



Street Sections - Auahi



Ward Village Residential Projects

COMPLETED

LUXURY



Waiea

177 residences
97% pre-sold/closed
7,716 SF GLA of retail
Completed 2017

UPPER MARKET



Anaha

317 residences
99% pre-sold
16,062 SF GLA of retail
Completed 2017

MARKET



Ae'o

465 residences
99.8% pre-sold
67,233 SF GLA of retail
Completion 2018/2019

WORKFORCE



Ke Kilohana

423 residences
99% pre-sold
21,907 SF GLA of retail
Completion 2019

UNDER CONSTRUCTION

MARKET



A'ali'i

750 residences
81.5% pre-sold
13,200 SF GLA of retail
Completion 2021

UPPER MARKET



Kō'ula

565 residences
63.7% pre-sold
35,000 SF GLA of retail
Completion TBD

Victoria Place



- New planning of Gateway project location
- 350 new homes in one footprint
- Integrated with Victoria Ward Park makai area
- 40 floors
- 15,590 square feet of open space (exceeds requirements)
- 64,105 square feet of recreation space (exceeds requirements)
- Ward Village currently exceeds Public Facilities Dedication requirements by 35,500 square feet
- Resident bicycle parking
- Reserved Housing:
 - 375 units completed at Ke Kilohana
 - 150 under construction at 'A'ali'i
 - At least 108 Reserved Housing units planned for Ward Village Block F

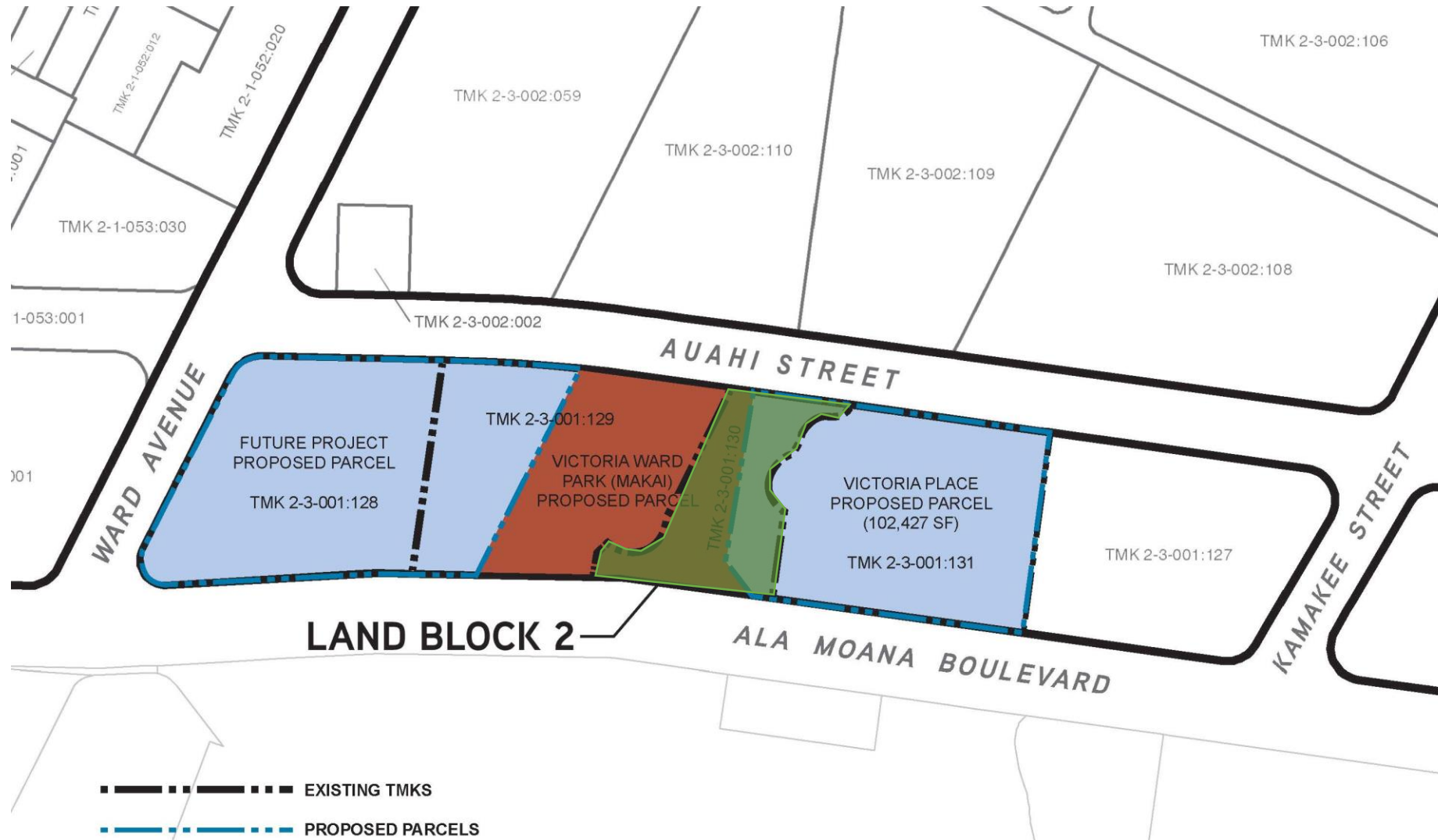
Gateway



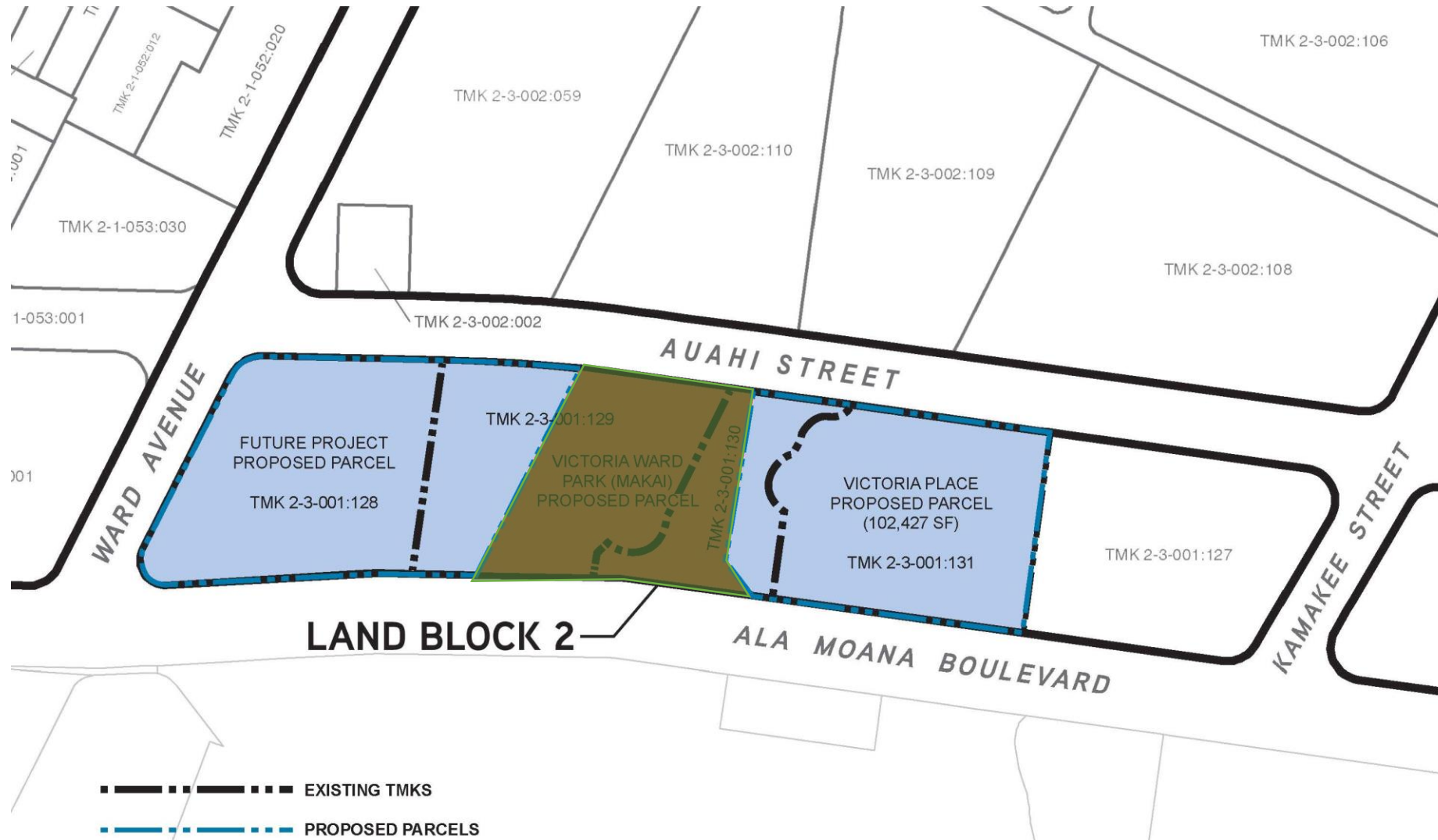
Victoria Place



Land Block 2 Existing TMKs and Proposed Subdivisions



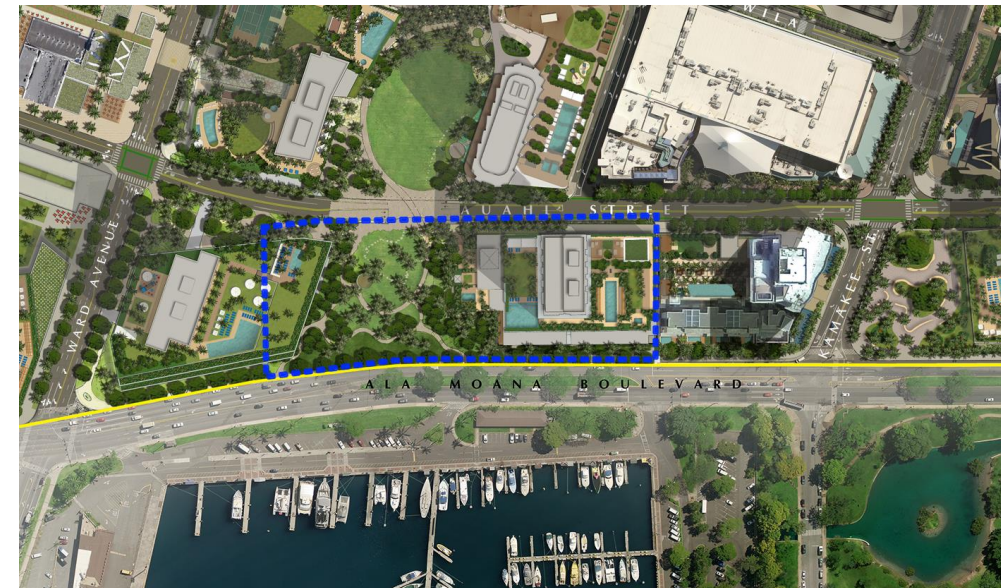
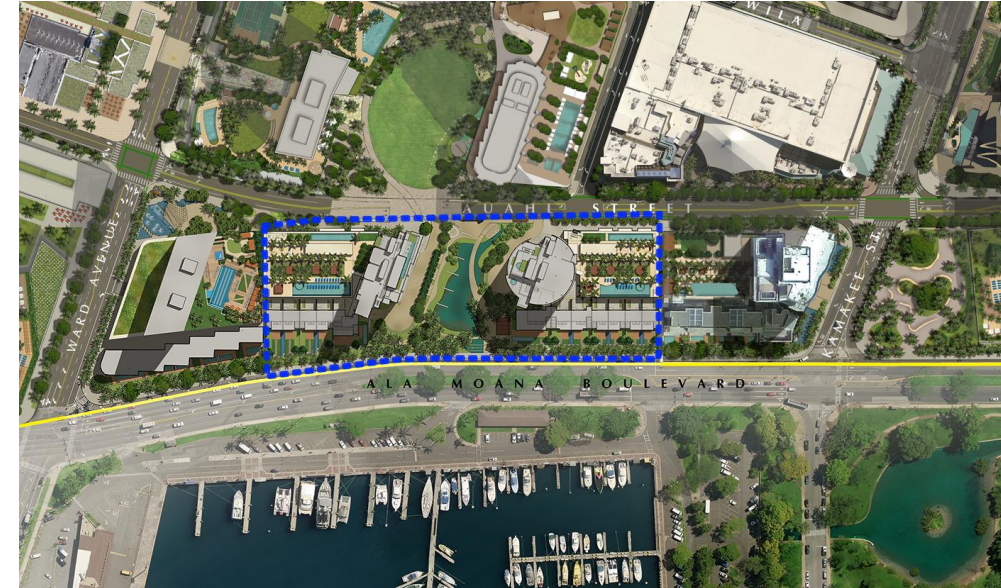
Land Block 2 Existing TMKs and Proposed Subdivisions



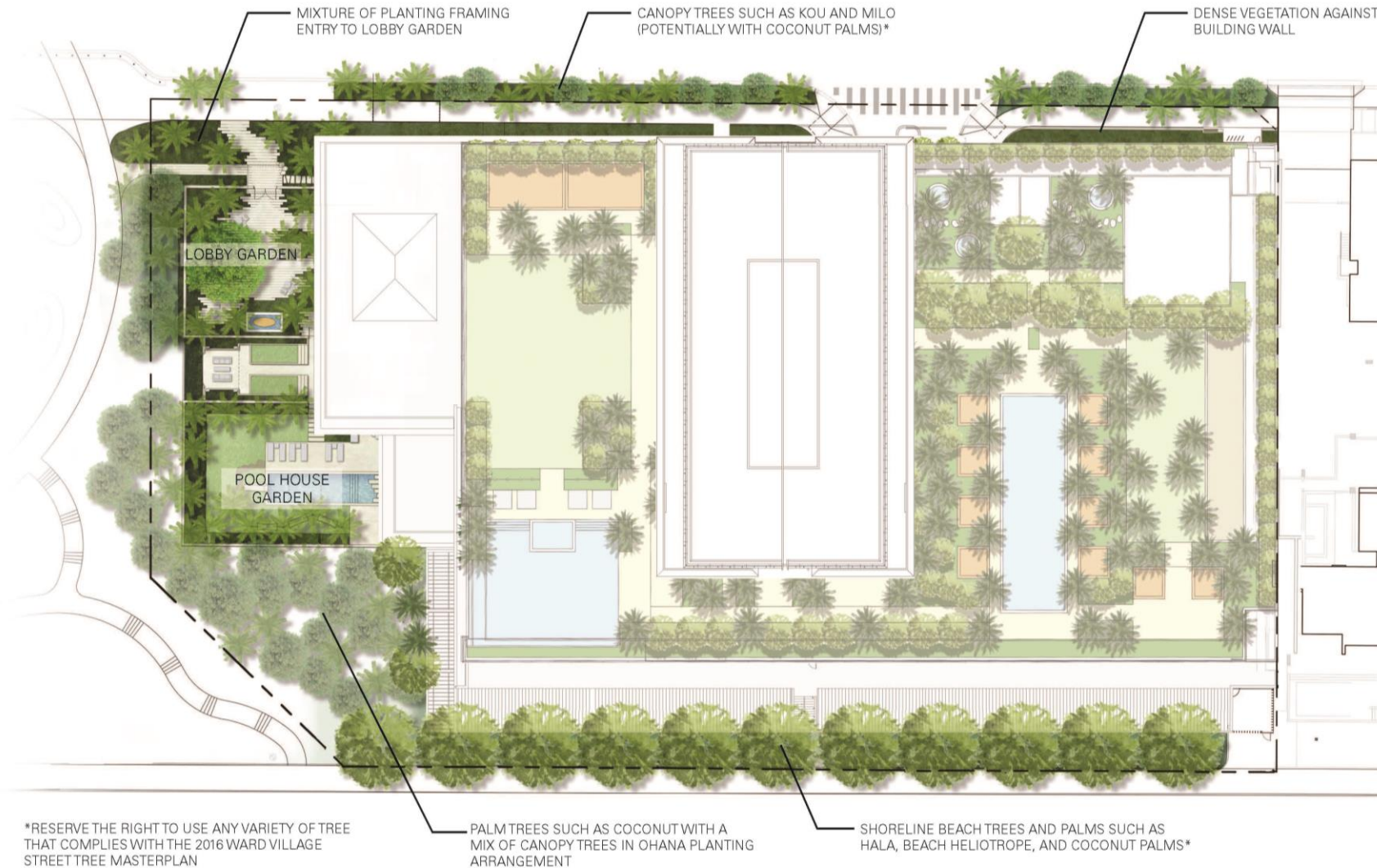
Comparison - Victoria Place and Gateway

Table 5-3 Comparison of Victoria Place and Gateway (PD Permit No. KAK 14-066)

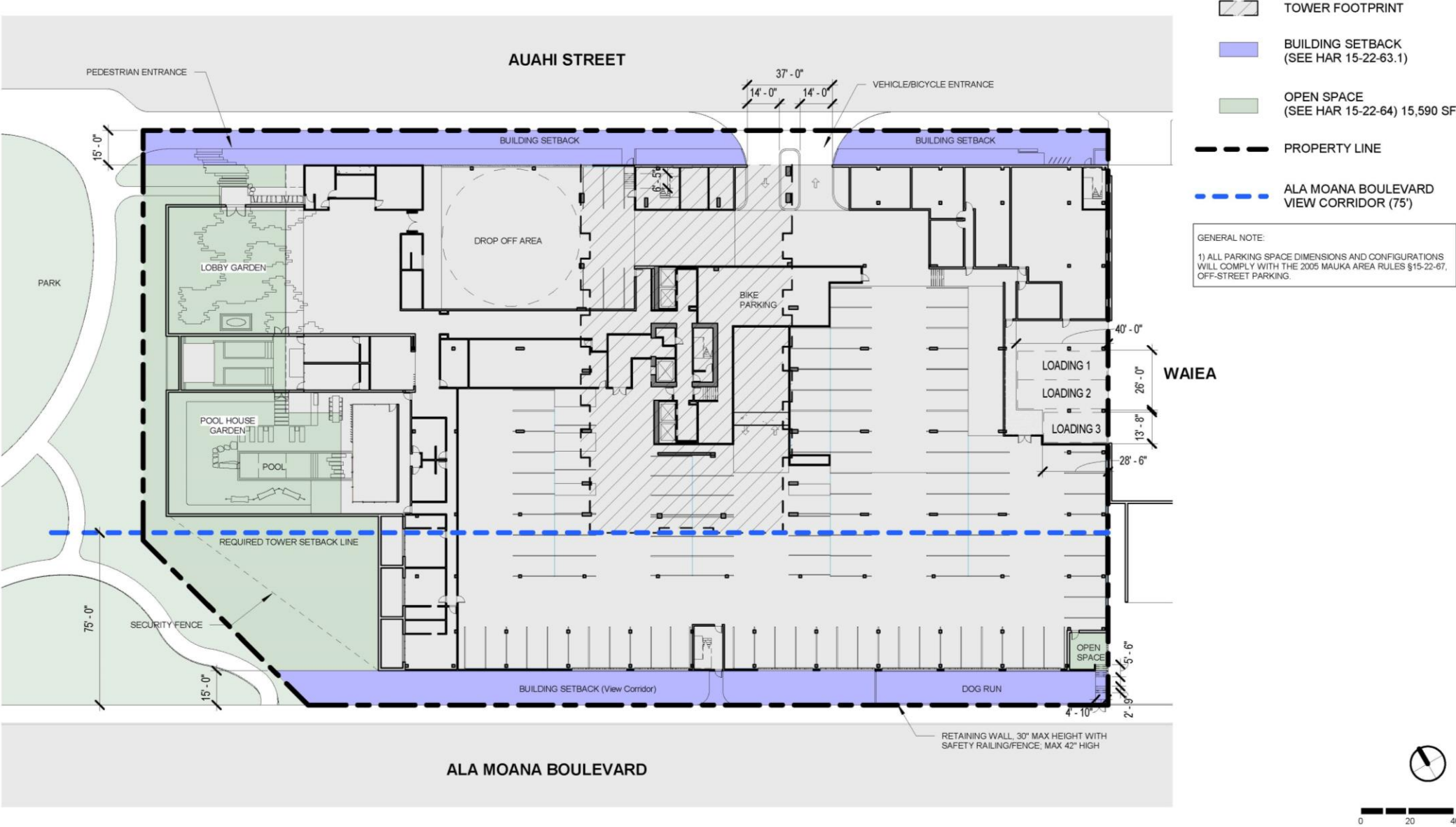
| | VICTORIA PLACE (PD Permit No. KAK 19-069) | GATEWAY (PD Permit No. KAK 14-066) |
|------------------------------|--|--|
| Location | TMK (1) 2-3-001: 131 TMK (1) 2-3-001: 130 (portion) | Diamond Head building: TMK (1) 2-3-001: 131 'Ewa building: TMK (1) 2-3-001: 129 |
| Site Area | 102,427 sf | 191,664 sf |
| Podium Height | 43 feet and 5 inches | Diamond Head building: 65 feet 'Ewa building: 65 feet |
| Tower Height | 400 feet plus 18 feet maximum rooftop elements | Diamond Head building: 311 feet plus rooftop elements 'Ewa building: 400 feet plus rooftop elements |
| Number of Floors | 40 | Diamond Head building: 27 'Ewa building: 34 |
| Number of Units | 350 | Diamond Head building: 123 'Ewa building: 113 Total: 236 |
| Recreational Area | Indoor: 16,050 sf Outdoor: 48,055 sf Total: 64,105 sf | Diamond Head building: 40,827 sf 'Ewa building: 39,415 sf Total: 80,242 sf |
| Open Space | 15,590 sf | Diamond Head building 'Ewa building Combined total: 7,807 sf |
| Parking and Loading | Parking: 593 spaces Loading: 3 spaces | Parking: 548 spaces Loading: 4 spaces |
| Floor Area | Residential: 556,305 sf Commercial: 0 sf Total: 556,305 sf | Residential: 764,284 sf Commercial: 19,730 sf Total: 784,014 sf |
| Reserved Housing Requirement | 70 units required | 48 units required |



Landscape Plan, Ground Level



Detailed Site Plan



Floor Plan, Ground Floor



| Parking Provided | | | | |
|--|-------------|---------------------|---------------------|--------|
| Standard (ST) | Tandem (TD) | Accessible (HC) | Acc. Van (HC VAN) | Total |
| 99 | 6 | 2 | 2 | 109 |
| Floor Area (in SF) * | | | | |
| Residential | Parking | Exterior Recreation | Interior Recreation | Total |
| 22,600 | 46,555 | 7,640 | 3,150 | 22,600 |
| *Total Floor Area does not include parking | | | | |
| Loading Provided | | | | |
| Loading Type | Number | Length | Width | Height |
| Large | 2 | 40' 0" | 13' 0" | 14' 0" |
| Small | 1 | 28' 6" | 13' 8" | 14' 0" |
| Total | 3 | - | - | - |

GENERAL NOTE:

- 1) ALL PARKING SPACE DIMENSIONS AND CONFIGURATIONS WILL COMPLY WITH THE 2005 MAUKA AREA RULES §15-22-67, OFF-STREET PARKING.
- 2) UP TO 15% OF OUTDOOR AMENITIES MAY BE COVERED RECREATIONAL FEATURES.

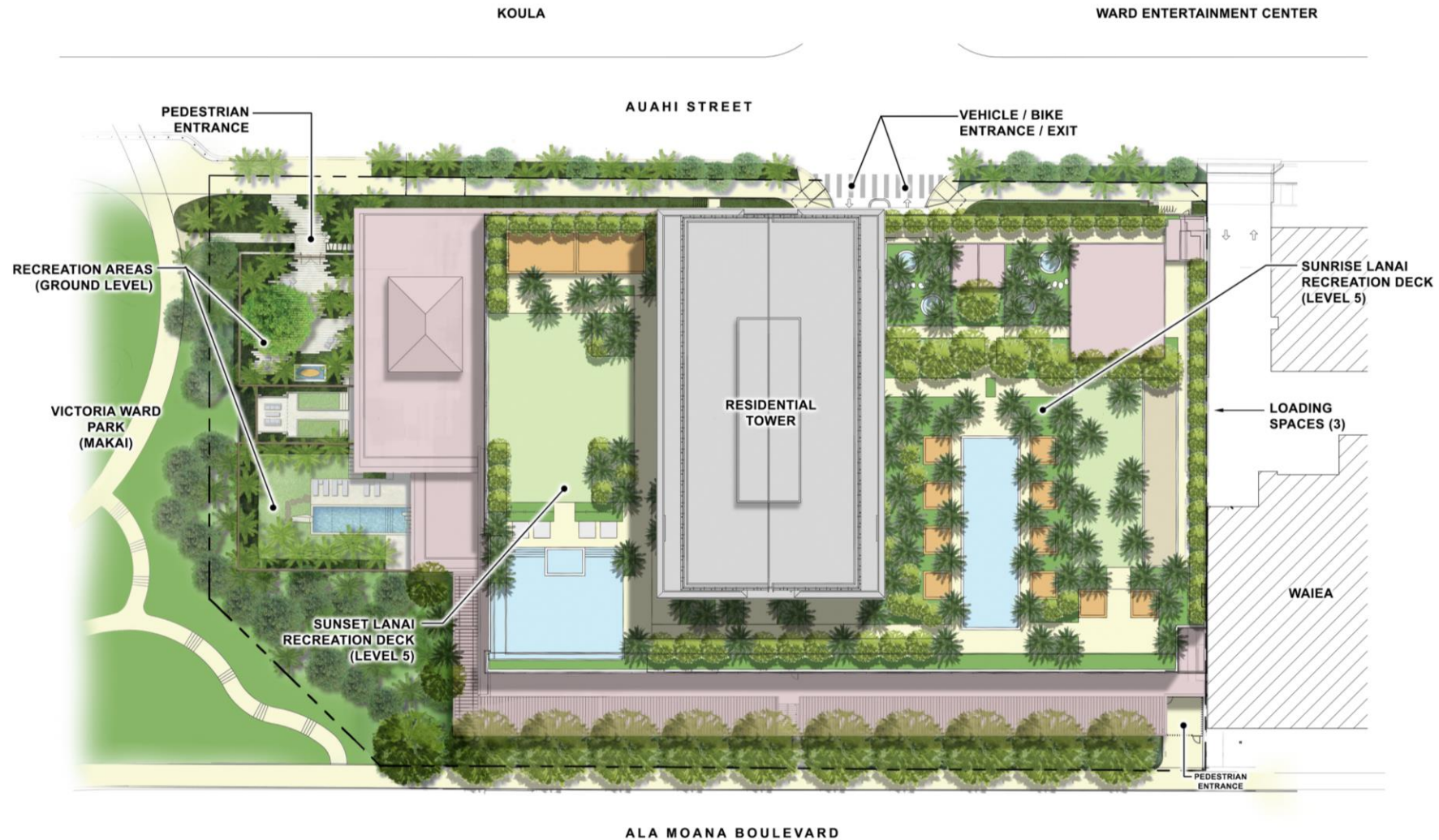
Ala Moana Blvd. - Existing Streetscape



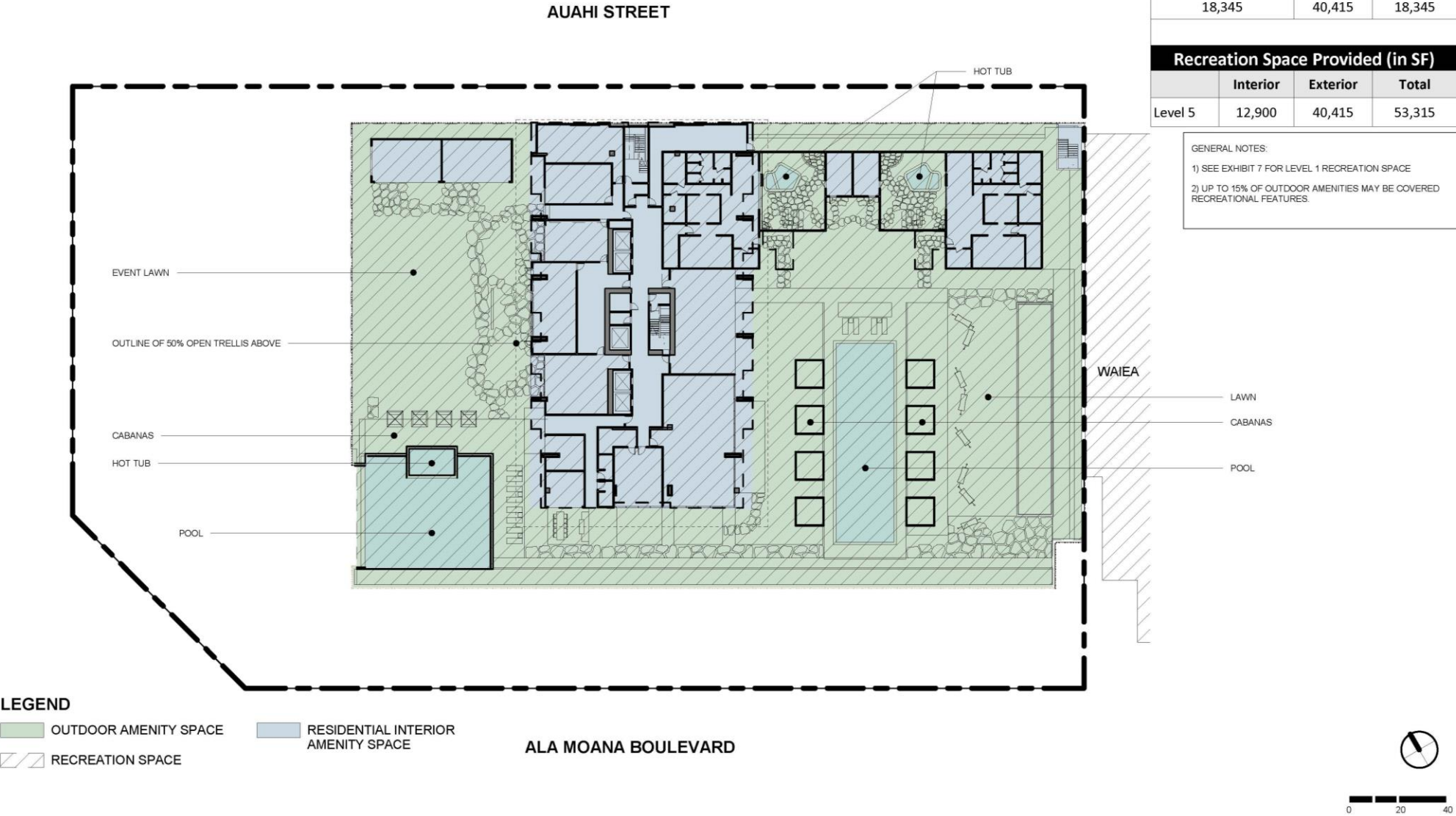
Ala Moana Blvd. - Planned Streetscape



Victoria Place Building and Site



Recreation Areas, Podium Level



An architectural rendering of a tropical park scene. In the foreground, a paved road with a crosswalk and a white car is visible. A wide, light-colored stone path leads into a lush green park area filled with palm trees and other tropical vegetation. Several people are shown walking, jogging, and cycling along the paths. A large, semi-transparent green rectangular box is centered over the middle of the image, containing the text "THANK YOU" in white, serif, all-caps font. The sky is a clear, bright blue with a few wispy clouds.

THANK
YOU