



July 2020



Congratulations

to HCDA's newly elected officers:

John Whalen, Chair
Amy Luersen,
Vice Chair
Shirley Swinney,
Secretary

Next Board Meeting

The next HCDA board meetings will be held on August 5.

Board agendas are posted on the website six days before the meetings.

For more information visit <http://dbedt.hawaii.gov/hcda>. Mahalo.

KAKAAKO PUMPING STATION SCREEN HOUSE RECEIVES PRESERVATION AWARD

On July 22, 2020, the Historic Hawaii Foundation presents the 46th Annual Preservation Honor Awards, a celebration of those who help preserve the continuity and character of Hawaii's historic places.

Among the project award recipients is the HCDA owned Ala Moana Pumping Station Screen House built in 1900 and the 1940 Pump House. The Screen House was built at the same time as the larger building, the Kakaako Pumping Station, which was restored and received an award in 2017.

All three buildings are listed as the Kakaako Pumping Station on the National Register of Historic Places, as well as the Hawaii Register.

According to the National Register, in 1896 the Republic of Hawaii hired Mr. Rudolph Hering, a sanitary engineer from New York to plan an effective sewage disposal system for the growing city of Honolulu. He recommended a "separate system" whereby separate networks of conduits carry sewage and storm waters.

In 1899, the work began with the sewer lines laid out in a gravity flow pattern that ended at the low point where Keawe Street and Ala Moana Boulevard intersect. That is where the Kakaako Pumping Station, designed by O. G. Traphagen was built in 1900. It used steam-powered pumps to force sewage out to sea.

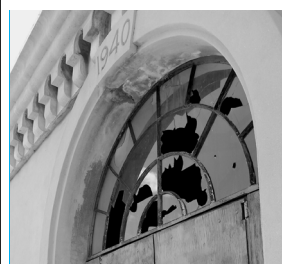
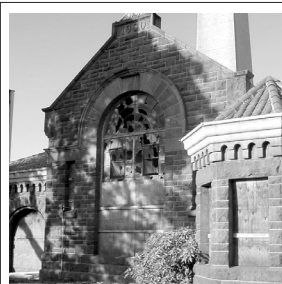
The 1940 Pump House seemed small from the exterior, but inside it went down about three-stories with an open well in the center filled with bigger newer pumps than the original building. It served as Honolulu's pumping station until the 1955 Ala Moana Pumping Station was built, and the Kakaako station was maintained as a standby.

The interior renovation covered the pit with a new suspended concrete floor. The exterior was repaired and restored.

The extensive renovation and restoration on the three buildings that comprised Honolulu's first



The Kakaako Pumping Station built in 1900.



Before the renovations.



After the renovations.

professionally designed sewage disposal system preserved a historic landmark, that now serves the community in a new way.

After the improvements on the largest of the three structures was completed, HCDA leased the space for \$1 per year to Pacific Gateway Center to use it as a gathering place that provides services and programs for seniors, their families and the community, the Na Kupuna Makamae Center.

