



HUNT COMMUNITIES HAWAI'I

**KALAELOA INFORMATIONAL
BRIEFING**

MARCH 3, 2021

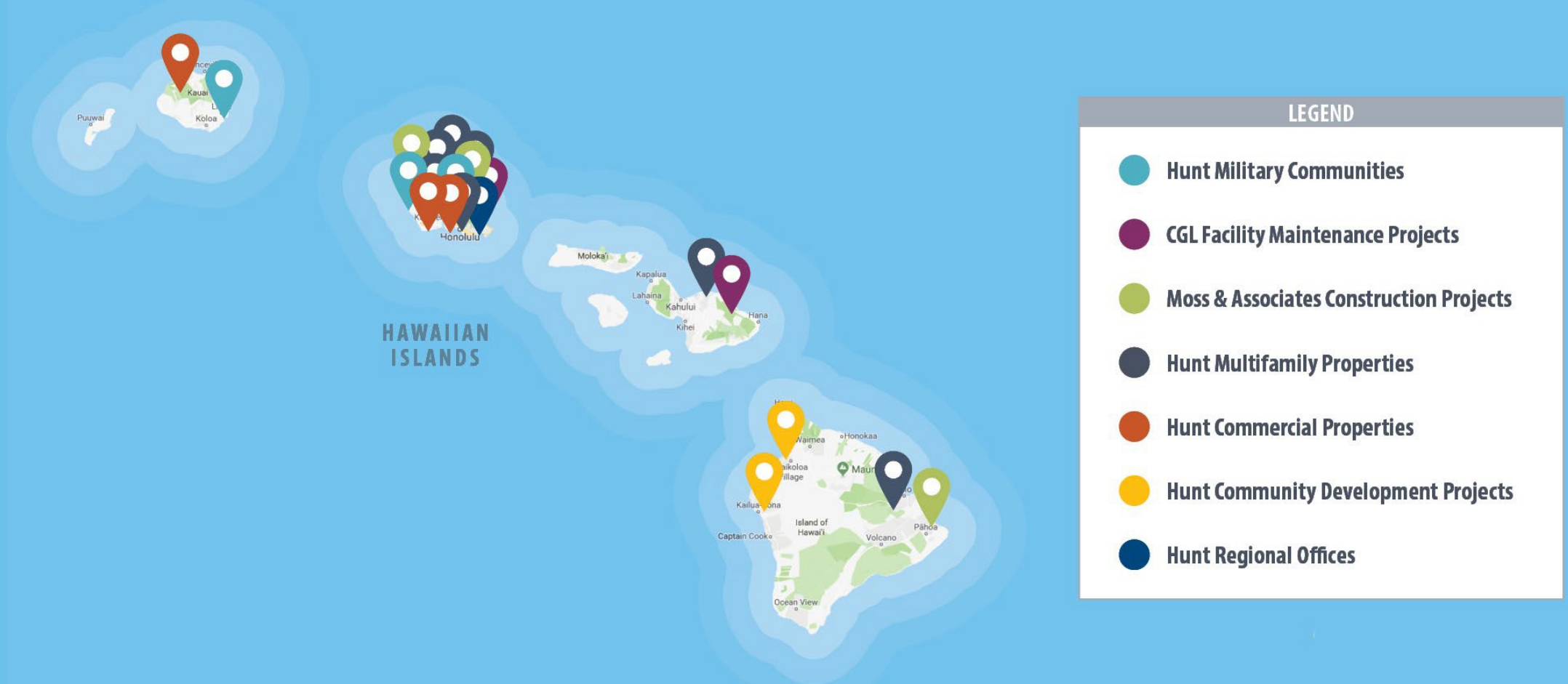


Values that Build.™ Since 1947.

HUNTCOMPANIESHAWAII.COM

HUNT INTRODUCTION

Hunt Development Group has been a local developer on O'ahu, Hawai'i Island, Kaua'i, and Maui for nearly 30 years.



HUNT IN KALAELOA

Since the closure of Barbers Point Naval Air Station in 1999, Hunt has revitalized the area - from restoring old abandoned buildings to bringing affordable housing and office/industrial/commercial tenants. This has resulted in hundreds of jobs and an economic boost to Kalaeloa.



HCDA'S KALAELOA MASTER PLAN

Master Plan Update

2006- Kalaeloa Master Plan
(KMP)

2012- Kalaeloa Community
Development District (CDD) Rules

2006

2006

2008

2010

2012

2014

2016

2018

2020

2021



Issues to consider:

- Current market needs/demand have shifted since KMP and CDD rules were adopted
- Community stakeholders' input
- Today's projected infrastructure costs
- Adjacent uses and the district's growth in the last 15 years
- Updated planning conditions
 - Status of Wākea St. and Kualaka'i Parkway Extensions
 - 2015 Battlefield Designation

HUNT KALAELOA MASTER PLAN

Jan

Mar

May

Jul

Sep

Nov

2021

Mar

May

Jul

Sep

Nov

2021

Infrastructure Cost Study

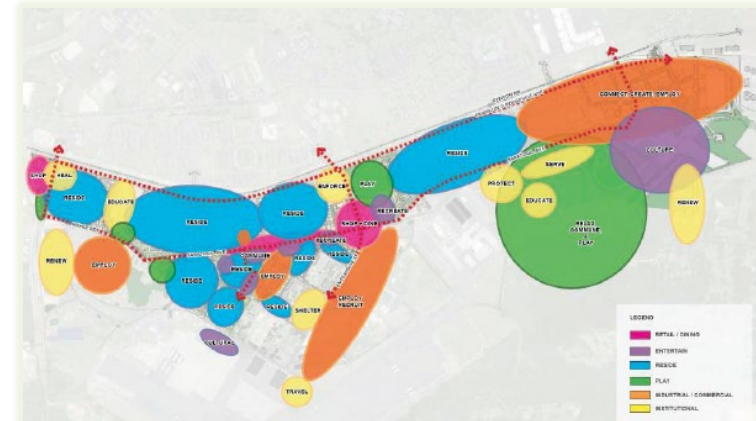
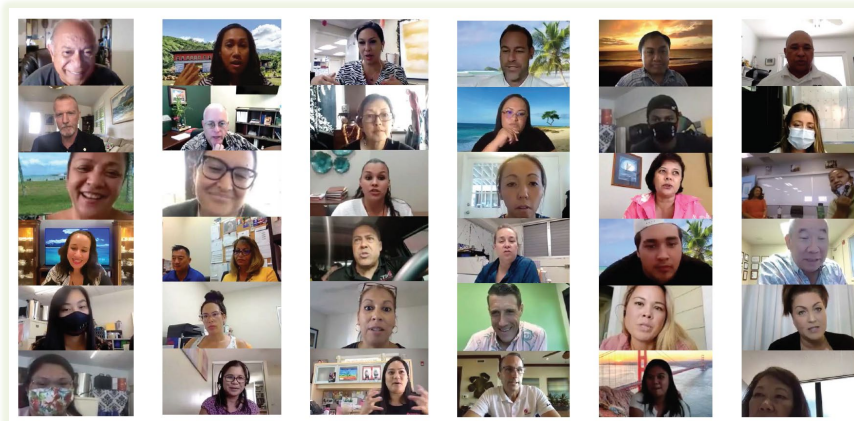
Market Demand Study

Develop Vision and Brand Experience

Talk Story with the Community >>

Hunt Master Plan Update (500+ acres) >>

HCDA updates Master Plan (~3700 acres) >>



PARCEL 1



Parcel 1 will bring nearly 400 workforce single- and multi-family homes for local West-side families

Hunt has made significant progress over the last several years:

- Funded regional infrastructure master planning for the HCDA KAL district (2010+)
- Facilitated a MOU between DOT, HCDA, City & County re: KAL roadways (2016)
- Acquired Navy water and wastewater system, made capital improvements, stabilized operations in KAL (2017)
- Working with Navy, HECO, and HCDA on an interim electrical solution (2020-present)
- **City's tentative approval of the Parcel 1 subdivision; final subdivision approval anticipated in March 2021**
- In conjunction with the Parcel 1 development, new roads (Kamokila Blvd. Extension) and other infrastructure will be built in KAL



737 Bishop Street, Mauka Tower, Suite 2750
Honolulu, HI 96813

Office 808 585-7900 • Fax 808 585-7910

www.huntcompanies.com

El Paso | Atlanta | Boston | Chicago | Columbia, SC | Denver | Dallas | Honolulu | Los Angeles | Memphis | Miami | New
York | Philadelphia | Sacramento | San Francisco | Washington, D.C.

INTERNATIONAL OFFICES: Abu Dhabi | London | Mexico City