

@ A Glance

Community Development Districts

The Hawai'i State Legislature saw great potential in Kaka'ako, Kalaeloa and He'eia, and designated these areas Community Development Districts. The legislature believed that establishing the Hawai'i Community Development Authority (HCDA) for planning and development would result in communities that serve the highest needs and aspirations of Hawai'i's people.

Kaka'ako Live, work, play



Land Area **600 +** acres

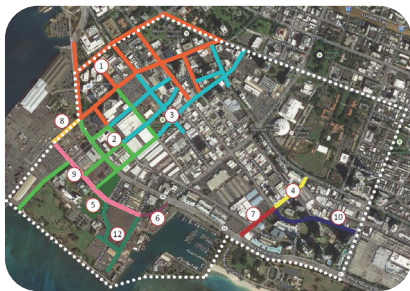
Estimated population **16,550**



State Investment
in infrastructure

\$226,000,000+

Economic Impact over
\$10,000,000,000
in construction spending

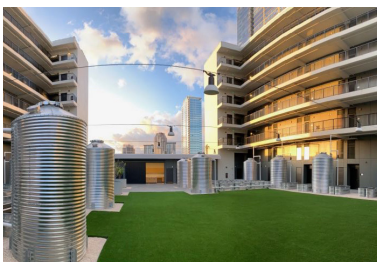


12,320



Completed
Housing Units

2,406 New housing
units pending



4,249 Affordable
housing units

1,380 Rental units
at 30-60% AMI

489 Elderly Rental units

Over **56** acres of Park Space



Kalaeloa Center of Excellence

Land Area

3,700 + acres

Estimated population

2,490 

Expanding state
of the art Solar
Energy Production



Kalaeloa
Energy
Corridor



State Investment
in infrastructure:

\$13,000,000+



Housing
Units

389 Proposed units for sale

480 Transitional housing

100 Affordable rental units

620 Market Rate Rentals



He'eia

ahupua'a management of
agriculture and natural resources



Food Security - working toward increasing
the amount of taro grown in Hawai'i.



Land Area **406 +** acres

30 acres converted to loi by
HCDA's partner Kāko'o Ōiwi

6 acres of invasive mangrove
removed around Kamehameha
Highway

Restored **1.3** miles of historic
farm roads



October 2022