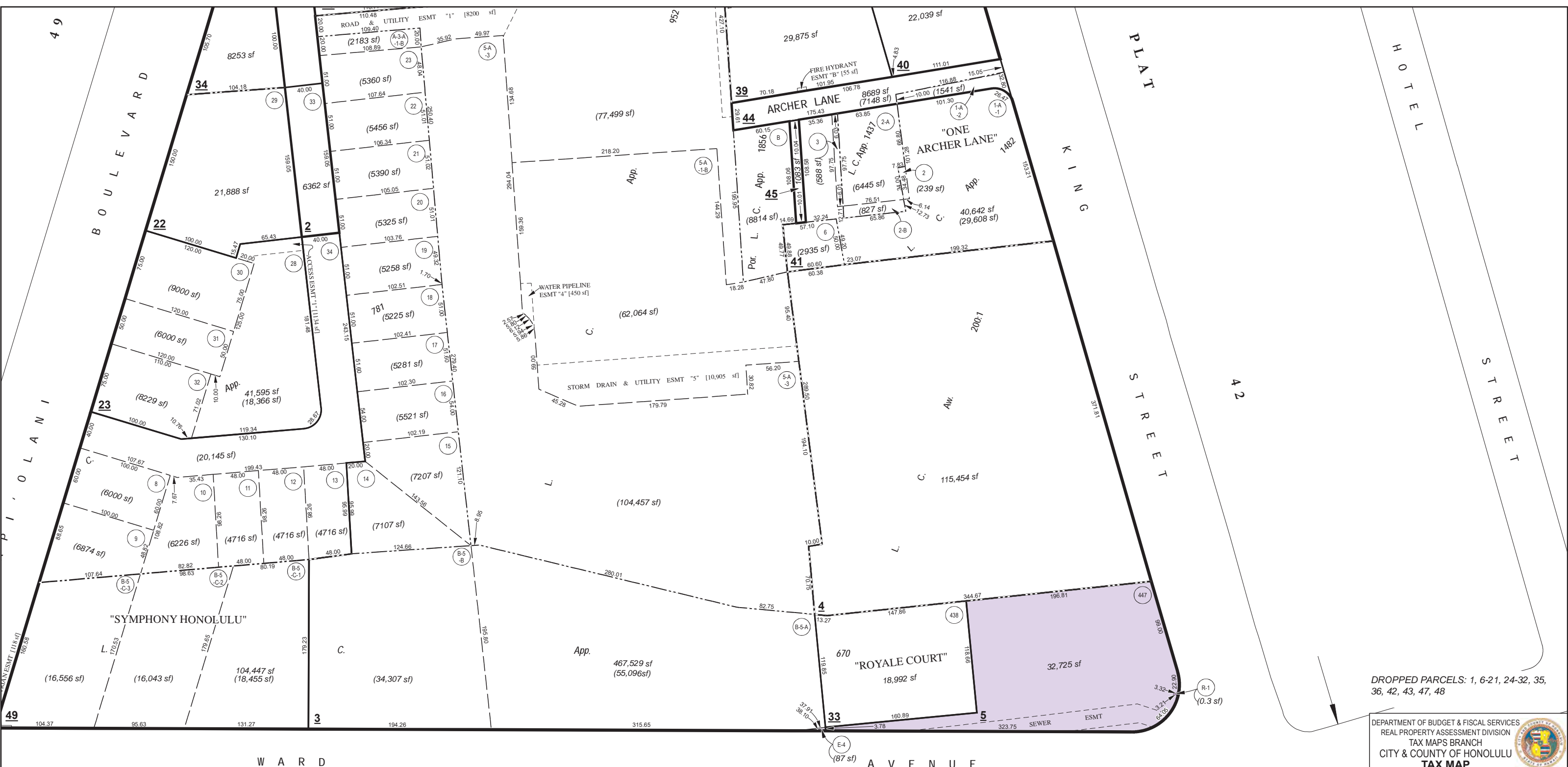


FIGURES





DROPPED PARCELS: 1, 6-21, 24-32, 35, 36, 42, 43, 47, 48

DEPARTMENT OF BUDGET & FISCAL SERVICES
 REAL PROPERTY ASSESSMENT DIVISION
 TAX MAPS BRANCH
 CITY & COUNTY OF HONOLULU
TAX MAP

FIRST TAXATION DIVISION

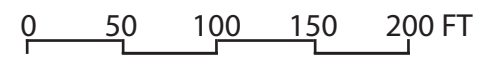
ZONE	SECTION	PLAT
2	1	044



SECTION 3 PLAT 08

COPYRIGHT CITY & COUNTY OF HONOLULU - ALL RIGHTS RESERVED 2015

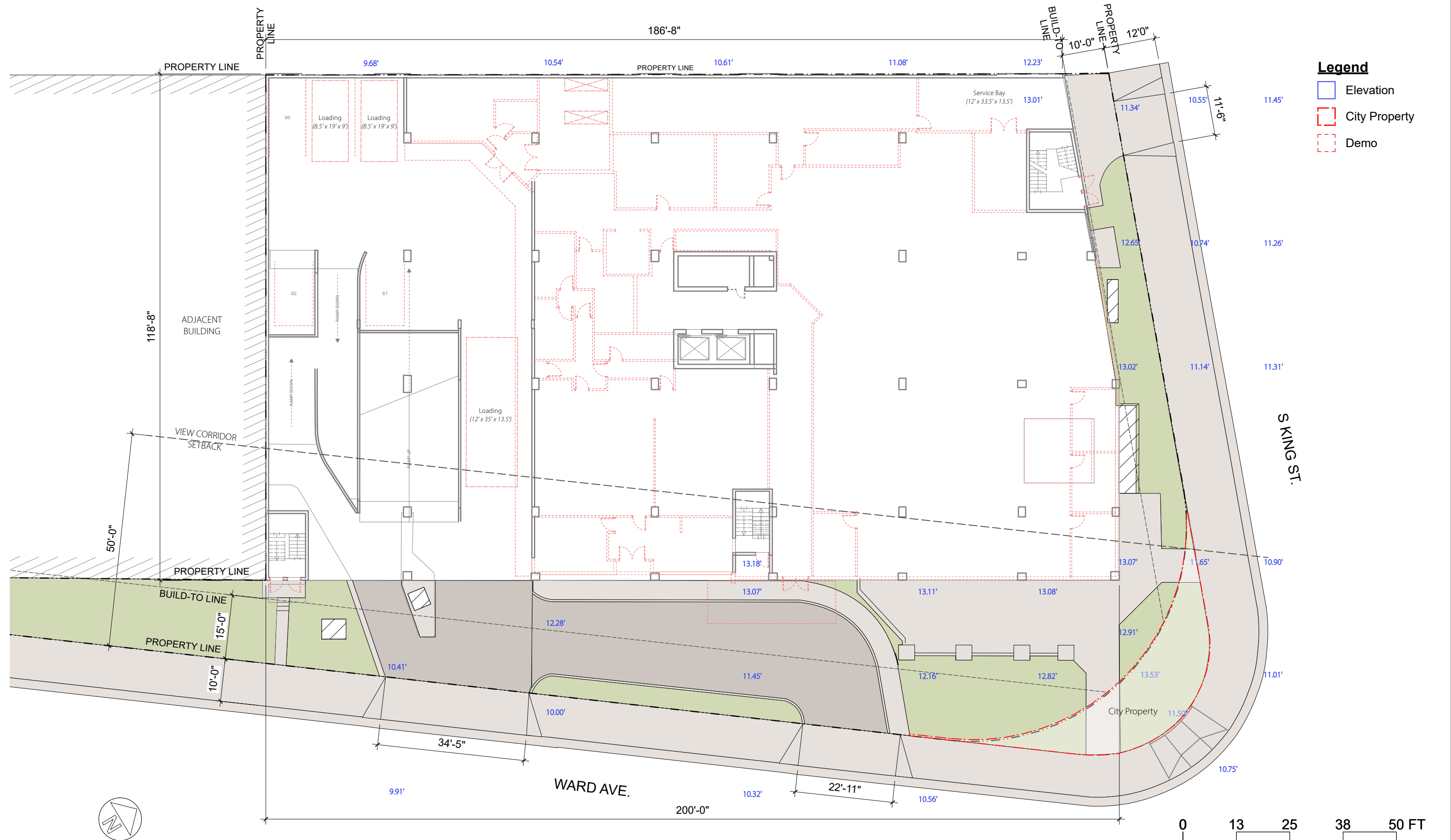
FOR PROPERTY ASSESSMENT PURPOSES, PARCELS MAY NOT BE LEGAL SUBDIVIDED LOTS - SUBJECT TO CHANGE

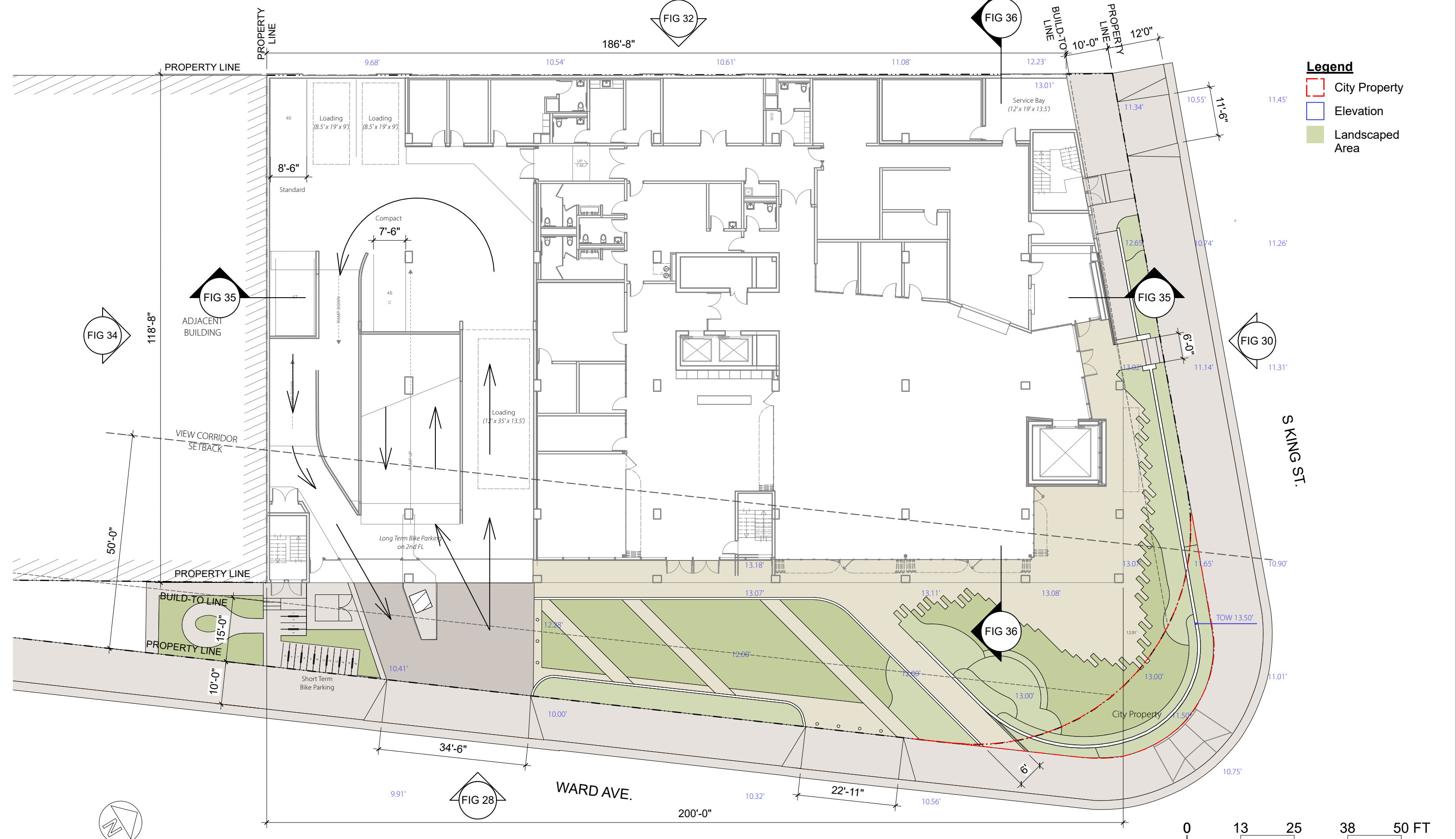


Lili'uokalani Center

FIGURE 2: TAX MAP KEY

FLANSBURGH
07.20.2022





Legend

- City Property
- Elevation
- Landscaped Area

Lili'uokalani Center

FIGURE 4: SITE PLAN - PROPOSED

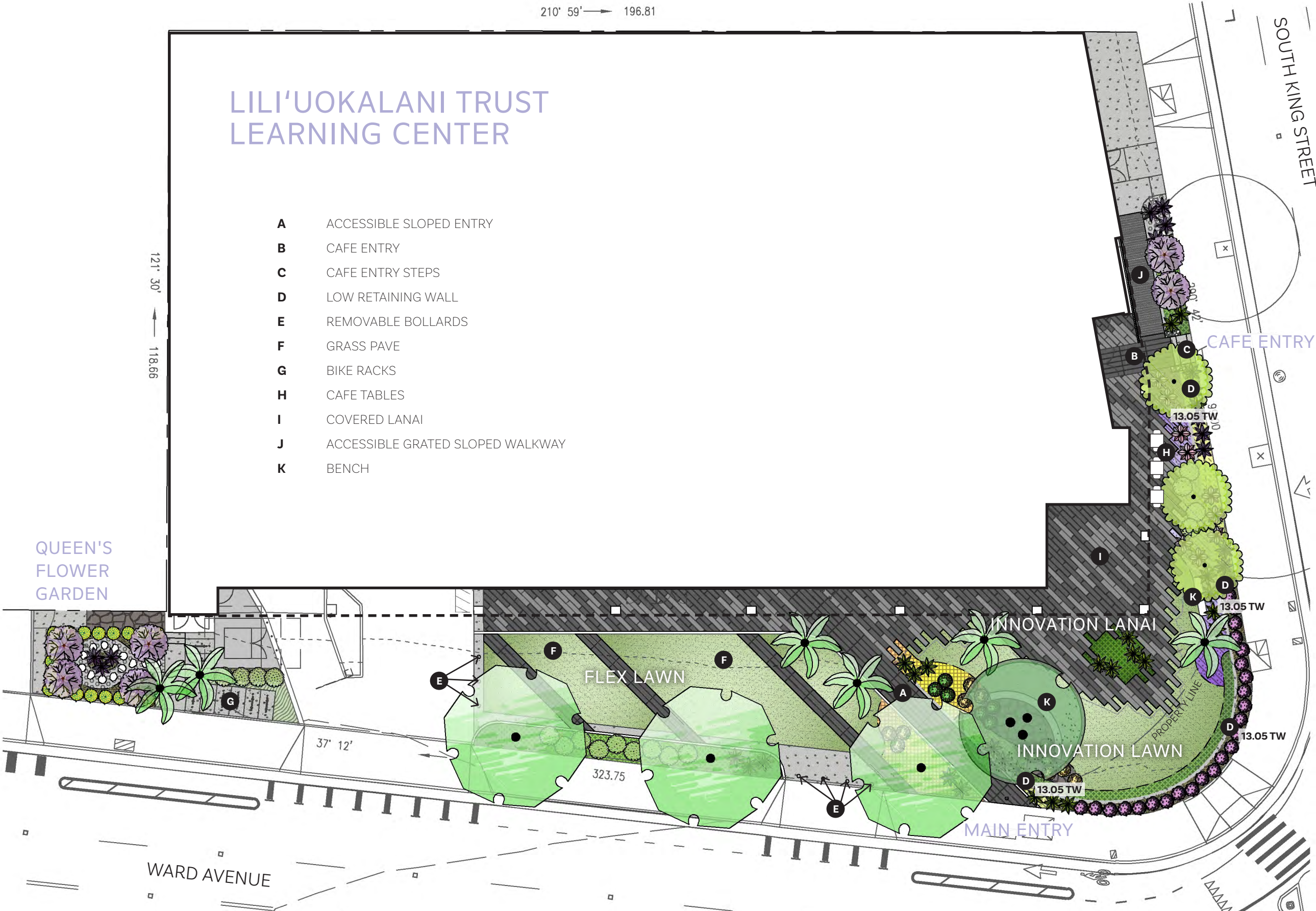
210' 59' → 196.81

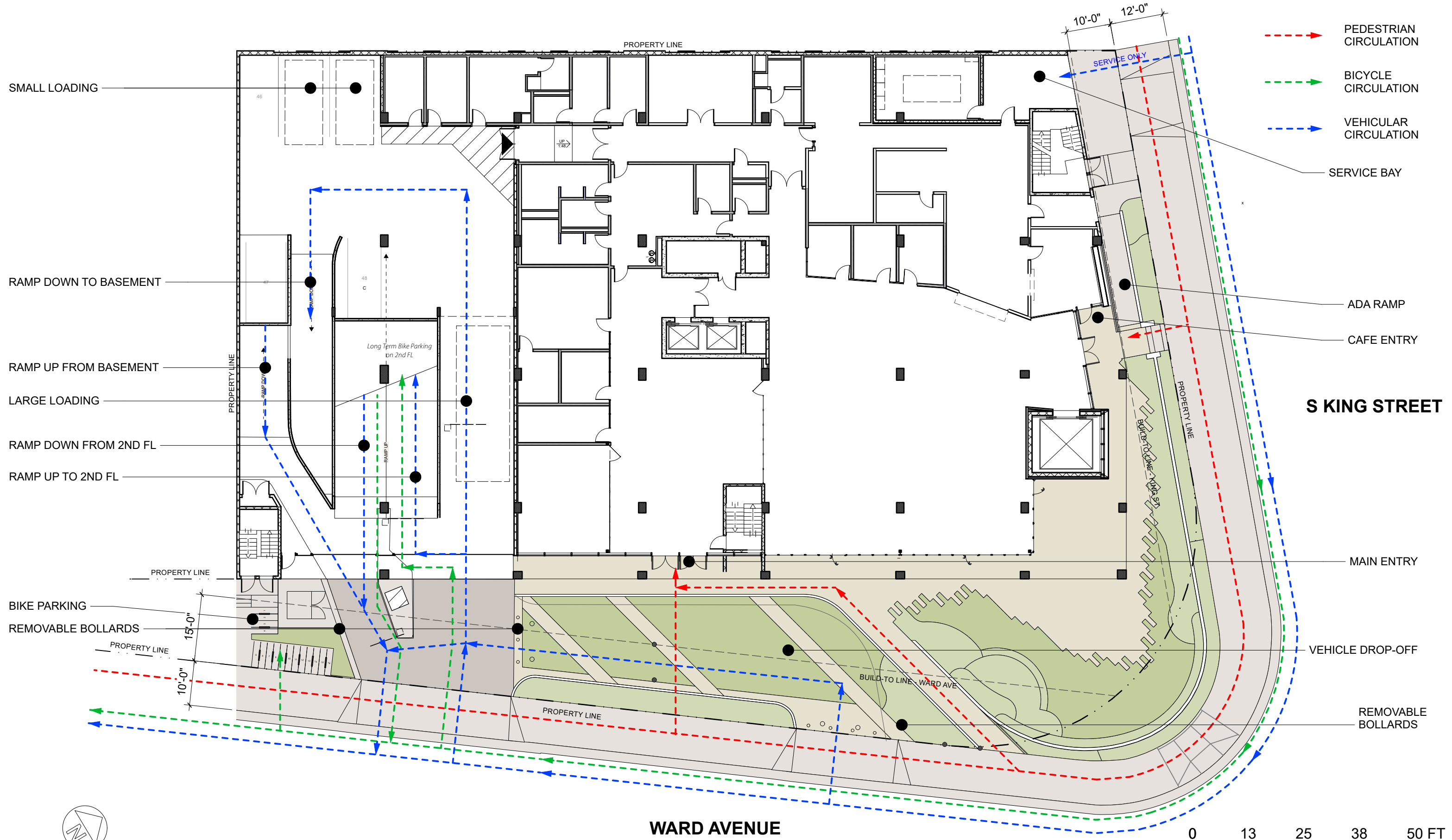
LILI'UOKALANI TRUST LEARNING CENTER

- A ACCESSIBLE SLOPED ENTRY
- B CAFE ENTRY
- C CAFE ENTRY STEPS
- D LOW RETAINING WALL
- E REMOVABLE BOLLARDS
- F GRASS PAVE
- G BIKE RACKS
- H CAFE TABLES
- I COVERED LANAI
- J ACCESSIBLE GRATED SLOPED WALKWAY
- K BENCH

PLANT SCHEDULE

TREES	QTY	COMMON NAME
	6	COCONUT PALM
	6	CROWN FLOWER (PUA K)
	1	HALA
	3	KUKUI
	3	LIGNUM VITAE
SHRUBS	QTY	COMMON NAME
	9	'A'ALI'I
	10	AGAPANTHUS
	25	POHINAHINA
	12	PURPLE PRINCE TI PLAN
	28	TI - HAWAIIAN GREEN
	17	TIARE GARDENIA
	19	WAX FIG
	9	'ILIMA
GROUND COVERS	QTY	COMMON NAME
	332 SF	'UKI'UKI
	228 SF	CAREX
	78 SF	DWARF LAUA'E FERN
	2,185 SF	EL TORO ZOYSIA GRASS
	625 SF	KUPUKUPU FERN
	311 SF	PILI GRASS



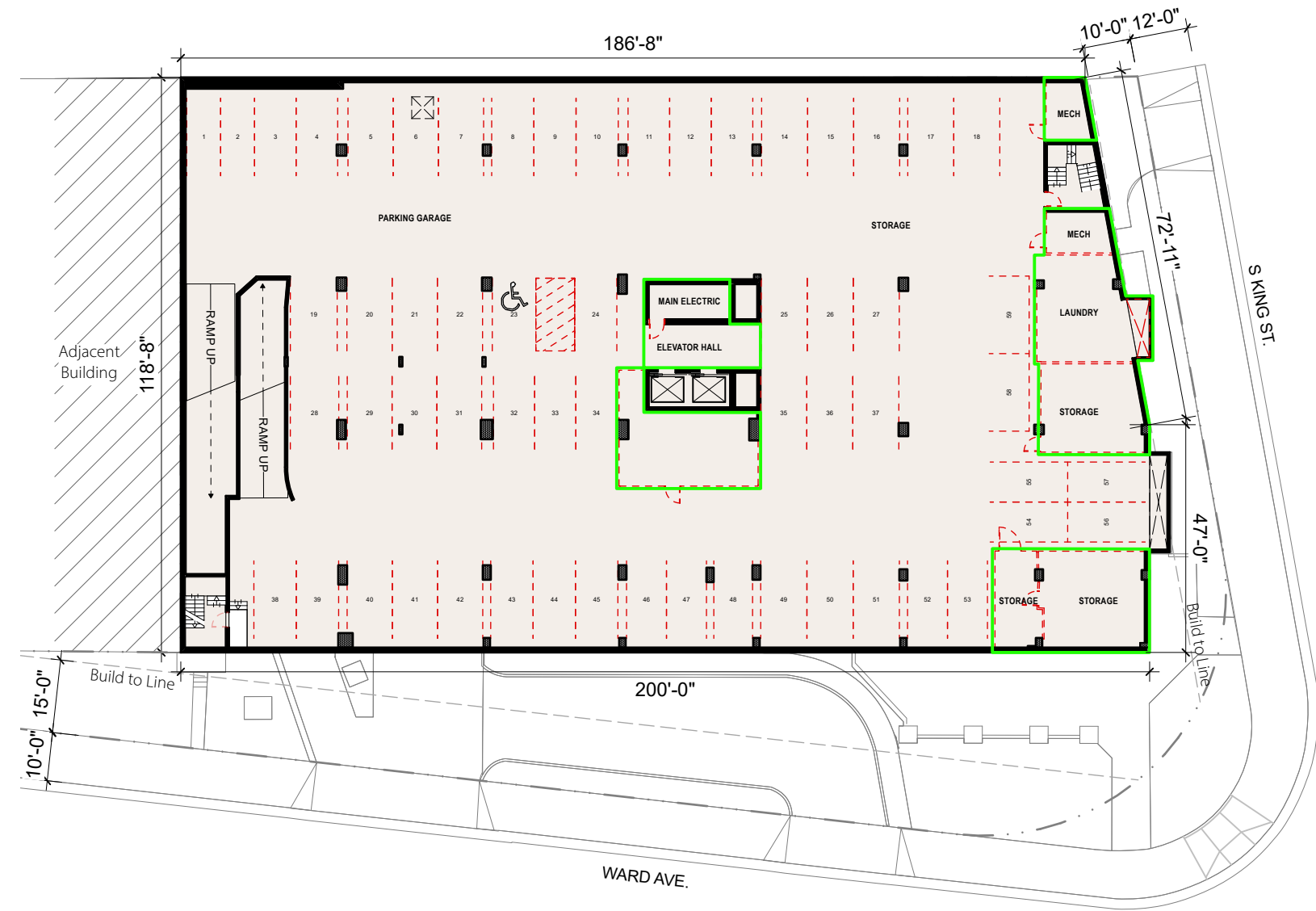


FLOOR AREA - Per MAR Description (Existing)		Parking Requirements	
Level	Floor Area (SF)	Requirements per Use (MAR)	
	Commercial / Other	Multiplier	Required Spaces
Basement	2,764	1/450 SF	6
1st Floor	15,249	1/450 SF	34
2nd Floor	466	1/450 SF	1
3rd Floor	410	1/450 SF	1
4th Floor	15,666	1/450 SF	35
5th Floor	21,540	1/450 SF	48
6th Floor	8,020	1/450 SF	18
7th Floor	19,852	1/450 SF	44
8th Floor	1,165	1/450 SF	3
Mechanical	0	0	0
Total	85,132	N/A	189

Parking Spaces Provided (Existing)				
Level	Standard	Compact	Handicap	Combined
Basement	47	11	1	59
1st Floor	2	1	0	3
2nd Floor	46	13	2	61
3rd Floor	46	13	2	61
4th Floor	14	5	0	19
Total Provided	155	43	5	203

Legend (Existing)

- Floor Area
 - Demo
 - Demo - Slab
- Standard Parking ≥ 8.5' Wide x 18' Deep
 Compact Parking ≥ 7.5' Wide x 18' Deep
 Accessible Parking ≥ 9' Wide x 18' Deep
 Large Loading ≥ 12' Wide x 35' Deep x 13.5' High
 Small Loading ≥ 8.5' Wide x 19' Deep x 9' High
 Service Bay ≥ 12' Wide x 33.5' Deep x 13.5' High

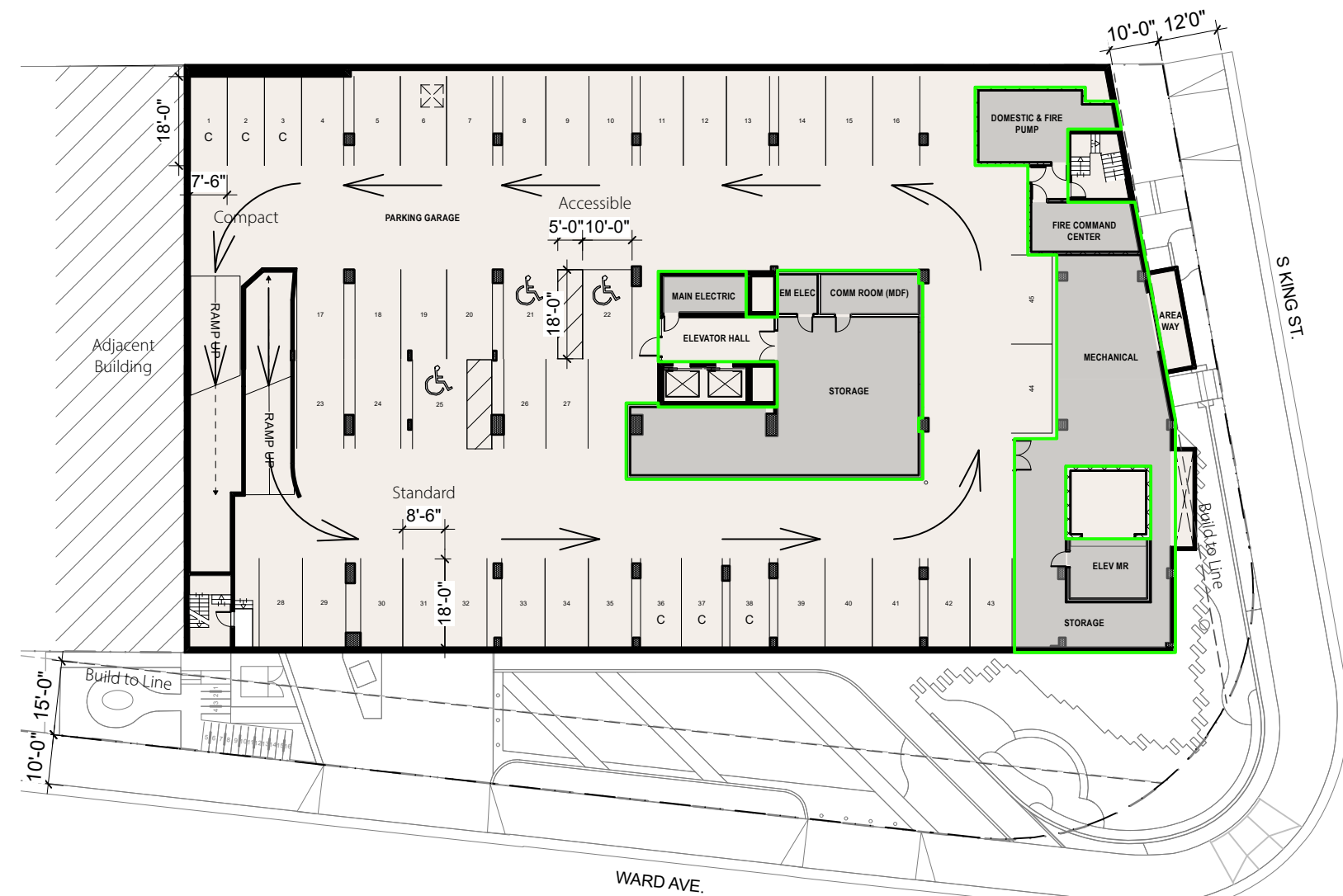


FLOOR AREA - Per MAR Description					
Floor Area (SF)					
Level	Classroom	Office	Support	Circulation	Total
Basement	0	0	3,960	706	4,666
1st Floor	7,351	1,443	3,203	3,072	15,069
2nd Floor	0	0	562	284	846
3rd Floor	0	0	563	233	796
4th Floor	6,531	196	3,581	5,198	15,506
5th Floor	8,920	540	4,362	7,413	21,235
6th Floor	1,269	1,296	998	6,689	10,252
7th Floor	4,918	3,575	3,044	7,111	18,648
8th Floor	8,413	187	743	944	10,287
Mechanical	0	0	0	0	0
Total	37,402	7,237	21,016	31,650	97,305

Parking Spaces Provided				
Level	Standard	Compact	Handicap	Combined
Basement	36	6	3	45
1st Floor	2	1	0	3
2nd Floor	36	11	2	49
3rd Floor	42	11	2	55
4th Floor	10	2	0	12
Total Provided	126	31	7	164

Legend (Proposed)

- Floor Area
 - Classroom
 - Office
 - Support
- Standard Parking ≥ 8.5' Wide x 18' Deep
 Compact Parking ≥ 7.5' Wide x 18' Deep
 Accessible Parking ≥ 9' Wide x 18' Deep
 Large Loading ≥ 12' Wide x 35' Deep x 13.5' High
 Small Loading ≥ 8.5' Wide x 19' Deep x 9' High
 Service Bay ≥ 12' Wide x 19' Deep x 13.5' High

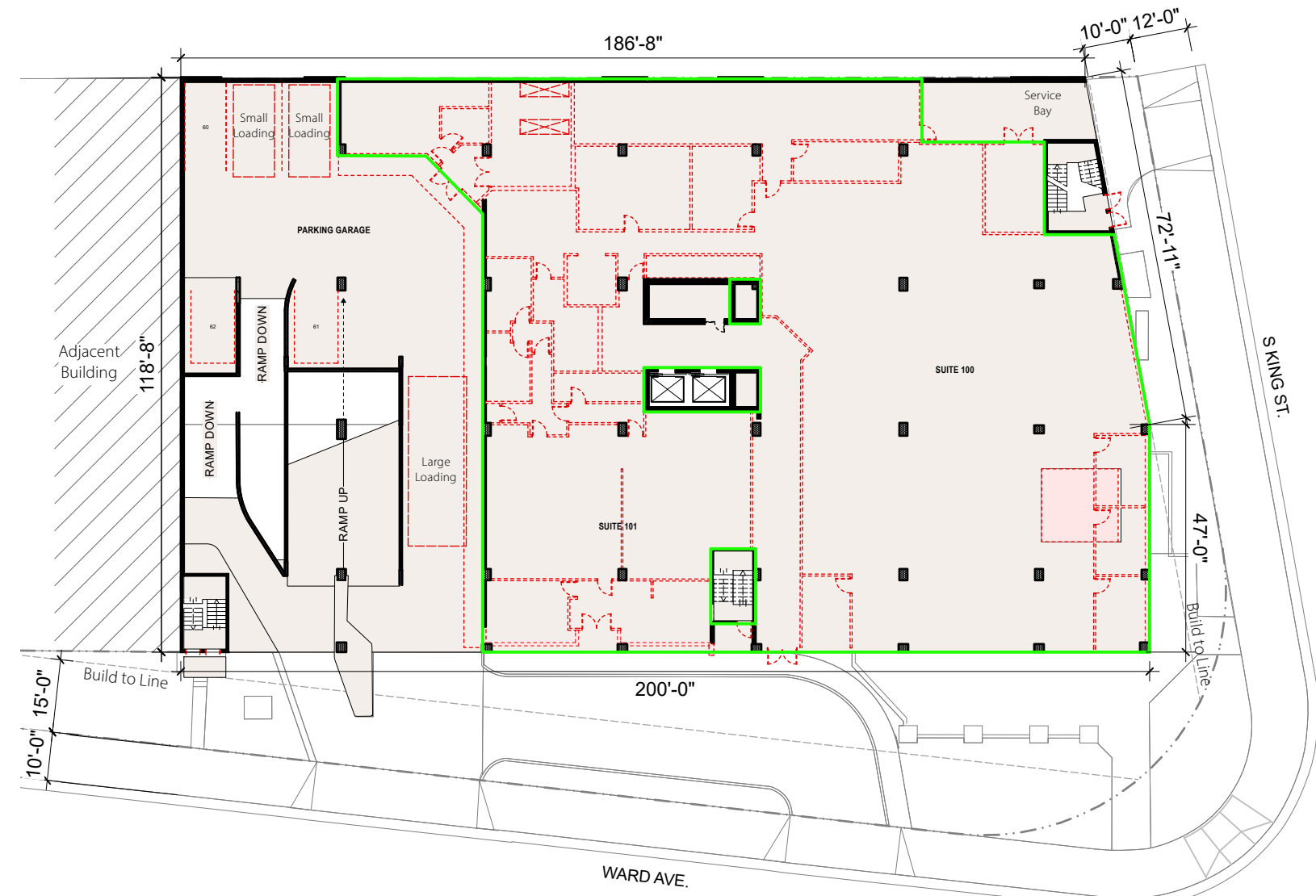


FLOOR AREA - Per MAR Description (Existing)		Parking Requirements	
Level	Floor Area (SF)	Requirements per Use (MAR)	
	Commercial / Other	Multiplier	Required Spaces
Basement	2,764	1/450 SF	6
1st Floor	15,249	1/450 SF	34
2nd Floor	466	1/450 SF	1
3rd Floor	410	1/450 SF	1
4th Floor	15,666	1/450 SF	35
5th Floor	21,540	1/450 SF	48
6th Floor	8,020	1/450 SF	18
7th Floor	19,852	1/450 SF	44
8th Floor	1,165	1/450 SF	3
Mechanical	0	0	0
Total	85,132	N/A	189

Parking Spaces Provided (Existing)				
Level	Standard	Compact	Handicap	Combined
Basement	47	11	1	59
1st Floor	2	1	0	3
2nd Floor	46	13	2	61
3rd Floor	46	13	2	61
4th Floor	14	5	0	19
Total Provided	155	43	5	203

Legend (Existing)

- Floor Area
- - - Demo
- Demo - Slab
- Standard Parking ≥ 8.5' Wide x 18' Deep
- Compact Parking ≥ 7.5' Wide x 18' Deep
- Accessible Parking ≥ 9' Wide x 18' Deep
- Large Loading ≥ 12' Wide x 35' Deep x 13.5' High
- Small Loading ≥ 8.5' Wide x 19' Deep x 9' High
- Service Bay ≥ 12' Wide x 33.5' Deep x 13.5' High



FLOOR AREA - Per MAR Description					
Floor Area (SF)					
Level	Classroom	Office	Support	Circulation	Total
Basement	0	0	3,960	706	4,666
1st Floor	7,351	1,443	3,203	3,072	15,069
2nd Floor	0	0	562	284	846
3rd Floor	0	0	563	233	796
4th Floor	6,531	196	3,581	5,198	15,506
5th Floor	8,920	540	4,362	7,413	21,235
6th Floor	1,269	1,296	998	6,689	10,252
7th Floor	4,918	3,575	3,044	7,111	18,648
8th Floor	8,413	187	743	944	10,287
Mechanical	0	0	0	0	0
Total	37,402	7,237	21,016	31,650	97,305

Parking Spaces Provided				
Level	Standard	Compact	Handicap	Combined
Basement	36	6	3	45
1st Floor	2	1	0	3
2nd Floor	36	11	2	49
3rd Floor	42	11	2	55
4th Floor	10	2	0	12
Total Provided	126	31	7	164

Legend (Proposed)

- Floor Area
 - Classroom
 - Office
 - Support
- Standard Parking ≥ 8.5' Wide x 18' Deep
 Compact Parking ≥ 7.5' Wide x 18' Deep
 Accessible Parking ≥ 9' Wide x 18' Deep
 Large Loading ≥ 12' Wide x 35' Deep x 13.5' High
 Small Loading ≥ 8.5' Wide x 19' Deep x 9' High
 Service Bay ≥ 12' Wide x 19' Deep x 13.5' High



Lili'uokalani Center

FIGURE 10: 1ST FLOOR - PROPOSED

FLANSBURGH

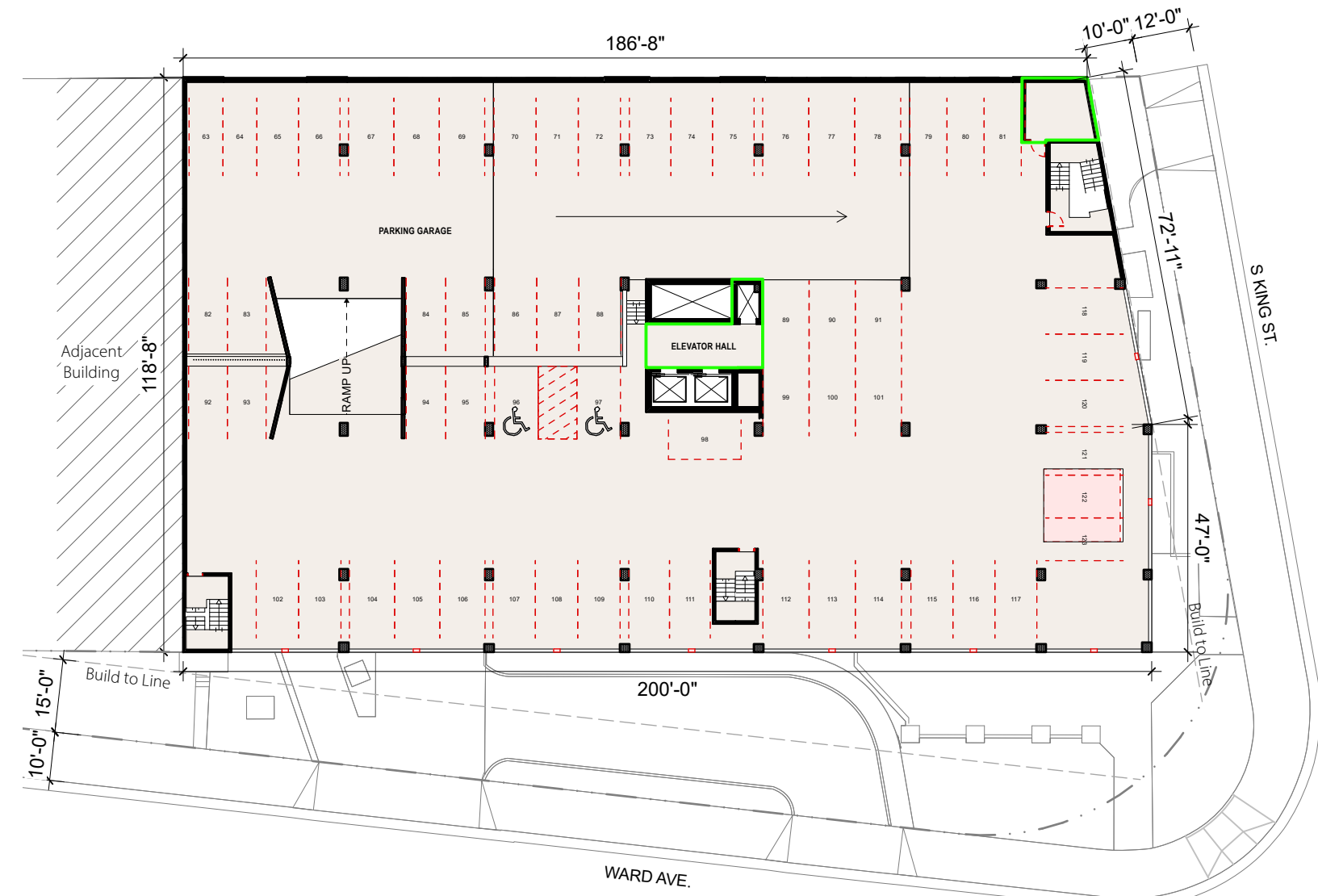
07.20.2022

FLOOR AREA - Per MAR Description (Existing)		Parking Requirements	
Level	Floor Area (SF)	Requirements per Use (MAR)	Required Spaces
	Commercial / Other	Multiplier	
Basement	2,764	1/450 SF	6
1st Floor	15,249	1/450 SF	34
2nd Floor	466	1/450 SF	1
3rd Floor	410	1/450 SF	1
4th Floor	15,666	1/450 SF	35
5th Floor	21,540	1/450 SF	48
6th Floor	8,020	1/450 SF	18
7th Floor	19,852	1/450 SF	44
8th Floor	1,165	1/450 SF	3
Mechanical	0	0	0
Total	85,132	N/A	189

Parking Spaces Provided (Existing)				
Level	Standard	Compact	Handicap	Combined
Basement	47	11	1	59
1st Floor	2	1	0	3
2nd Floor	46	13	2	61
3rd Floor	46	13	2	61
4th Floor	14	5	0	19
Total Provided	155	43	5	203

Legend (Existing)

- Floor Area
 - Demo
 - Demo - Slab
- Standard Parking ≥ 8.5' Wide x 18' Deep
 Compact Parking ≥ 7.5' Wide x 18' Deep
 Accessible Parking ≥ 9' Wide x 18' Deep
 Large Loading ≥ 12' Wide x 35' Deep x 13.5' High
 Small Loading ≥ 8.5' Wide x 19' Deep x 9' High
 Service Bay ≥ 12' Wide x 33.5' Deep x 13.5' High

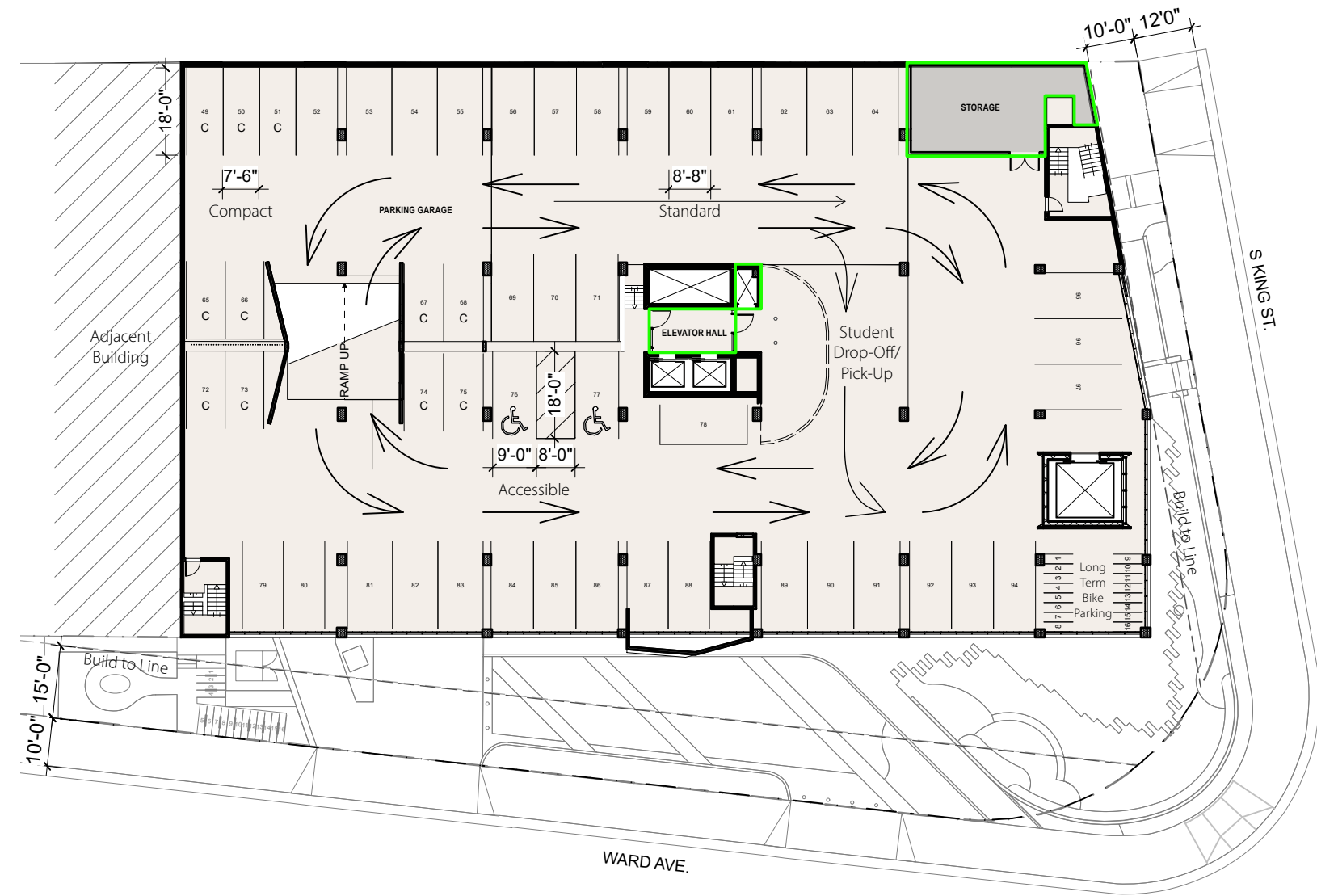


FLOOR AREA - Per MAR Description					
Floor Area (SF)					
Level	Classroom	Office	Support	Circulation	Total
Basement	0	0	3,960	706	4,666
1st Floor	7,351	1,443	3,203	3,072	15,069
2nd Floor	0	0	562	284	846
3rd Floor	0	0	563	233	796
4th Floor	6,531	196	3,581	5,198	15,506
5th Floor	8,920	540	4,362	7,413	21,235
6th Floor	1,269	1,296	998	6,689	10,252
7th Floor	4,918	3,575	3,044	7,111	18,648
8th Floor	8,413	187	743	944	10,287
Mechanical	0	0	0	0	0
Total	37,402	7,237	21,016	31,650	97,305

Parking Spaces Provided				
Level	Standard	Compact	Handicap	Combined
Basement	36	6	3	45
1st Floor	2	1	0	3
2nd Floor	36	11	2	49
3rd Floor	42	11	2	55
4th Floor	10	2	0	12
Total Provided	126	31	7	164

Legend (Proposed)

- Floor Area
 - Classroom
 - Office
 - Support
- Standard Parking ≥ 8.5' Wide x 18' Deep
 - Compact Parking ≥ 7.5' Wide x 18' Deep
 - Accessible Parking ≥ 9' Wide x 18' Deep
 - Large Loading ≥ 12' Wide x 35' Deep x 13.5' High
 - Small Loading ≥ 8.5' Wide x 19' Deep x 9' High
 - Service Bay ≥ 12' Wide x 19' Deep x 13.5' High



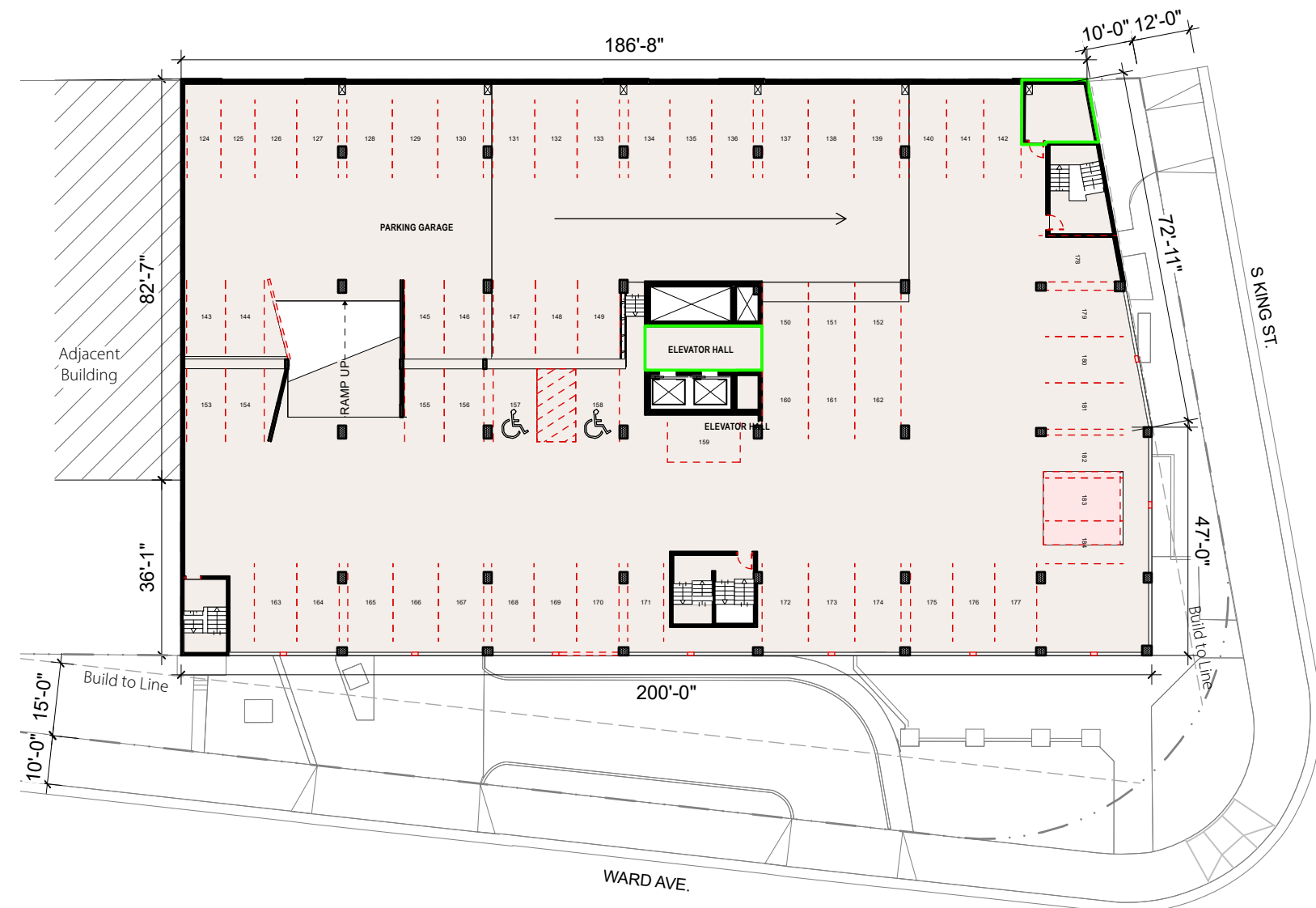
0 25 50 75 100 FT

FLOOR AREA - Per MAR Description (Existing)		Parking Requirements	
Level	Floor Area (SF)	Requirements per Use (MAR)	Required Spaces
	Commercial / Other	Multiplier	
Basement	2,764	1/450 SF	6
1st Floor	15,249	1/450 SF	34
2nd Floor	466	1/450 SF	1
3rd Floor	410	1/450 SF	1
4th Floor	15,666	1/450 SF	35
5th Floor	21,540	1/450 SF	48
6th Floor	8,020	1/450 SF	18
7th Floor	19,852	1/450 SF	44
8th Floor	1,165	1/450 SF	3
Mechanical	0	0	0
Total	85,132	N/A	189

Parking Spaces Provided (Existing)				
Level	Standard	Compact	Handicap	Combined
Basement	47	11	1	59
1st Floor	2	1	0	3
2nd Floor	46	13	2	61
3rd Floor	46	13	2	61
4th Floor	14	5	0	19
Total Provided	155	43	5	203

Legend (Existing)

- Floor Area
 - Demo
 - Demo - Slab
- Standard Parking ≥ 8.5' Wide x 18' Deep
 Compact Parking ≥ 7.5' Wide x 18' Deep
 Accessible Parking ≥ 9' Wide x 18' Deep
 Large Loading ≥ 12' Wide x 35' Deep x 13.5' High
 Small Loading ≥ 8.5' Wide x 19' Deep x 9' High
 Service Bay ≥ 12' Wide x 33.5' Deep x 13.5' High

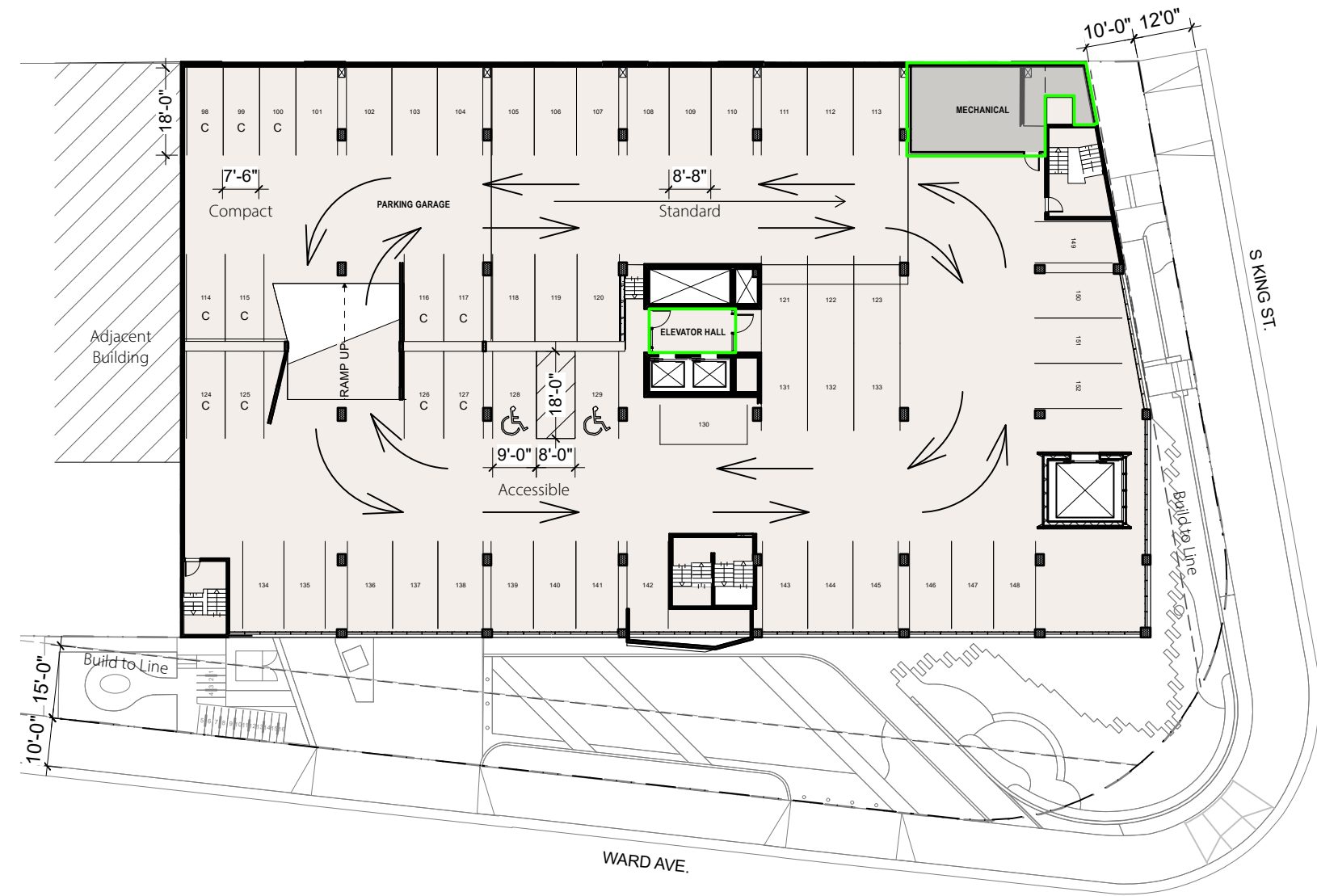


FLOOR AREA - Per MAR Description					
Floor Area (SF)					
Level	Classroom	Office	Support	Circulation	Total
Basement	0	0	3,960	706	4,666
1st Floor	7,351	1,443	3,203	3,072	15,069
2nd Floor	0	0	562	284	846
3rd Floor	0	0	563	233	796
4th Floor	6,531	196	3,581	5,198	15,506
5th Floor	8,920	540	4,362	7,413	21,235
6th Floor	1,269	1,296	998	6,689	10,252
7th Floor	4,918	3,575	3,044	7,111	18,648
8th Floor	8,413	187	743	944	10,287
Mechanical	0	0	0	0	0
Total	37,402	7,237	21,016	31,650	97,305

Parking Spaces Provided				
Level	Standard	Compact	Handicap	Combined
Basement	36	6	3	45
1st Floor	2	1	0	3
2nd Floor	36	11	2	49
3rd Floor	42	11	2	55
4th Floor	10	2	0	12
Total Provided	126	31	7	164

Legend (Proposed)

- Floor Area
 - Classroom
 - Office
 - Support
- Standard Parking ≥ 8.5' Wide x 18' Deep
 Compact Parking ≥ 7.5' Wide x 18' Deep
 Accessible Parking ≥ 9' Wide x 18' Deep
 Large Loading ≥ 12' Wide x 35' Deep x 13.5' High
 Small Loading ≥ 8.5' Wide x 19' Deep x 9' High
 Service Bay ≥ 12' Wide x 19' Deep x 13.5' High



0 25 50 75 100 FT

FLOOR AREA - Per MAR Description (Existing)		Parking Requirements	
Level	Floor Area (SF)	Requirements per Use (MAR)	
	Commercial / Other	Multiplier	Required Spaces
Basement	2,764	1/450 SF	6
1st Floor	15,249	1/450 SF	34
2nd Floor	466	1/450 SF	1
3rd Floor	410	1/450 SF	1
4th Floor	15,666	1/450 SF	35
5th Floor	21,540	1/450 SF	48
6th Floor	8,020	1/450 SF	18
7th Floor	19,852	1/450 SF	44
8th Floor	1,165	1/450 SF	3
Mechanical	0	0	0
Total	85,132	N/A	189

Parking Spaces Provided (Existing)				
Level	Standard	Compact	Handicap	Combined
Basement	47	11	1	59
1st Floor	2	1	0	3
2nd Floor	46	13	2	61
3rd Floor	46	13	2	61
4th Floor	14	5	0	19
Total Provided	155	43	5	203

Legend (Existing)

- Floor Area
- - - Demo
- Demo - Slab
- Standard Parking ≥ 8.5' Wide x 18' Deep
- Compact Parking ≥ 7.5' Wide x 18' Deep
- Accessible Parking ≥ 9' Wide x 18' Deep
- Large Loading ≥ 12' Wide x 35' Deep x 13.5' High
- Small Loading ≥ 8.5' Wide x 19' Deep x 9' High
- Service Bay ≥ 12' Wide x 33.5' Deep x 13.5' High

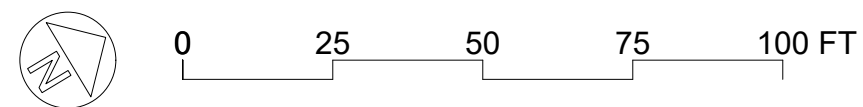
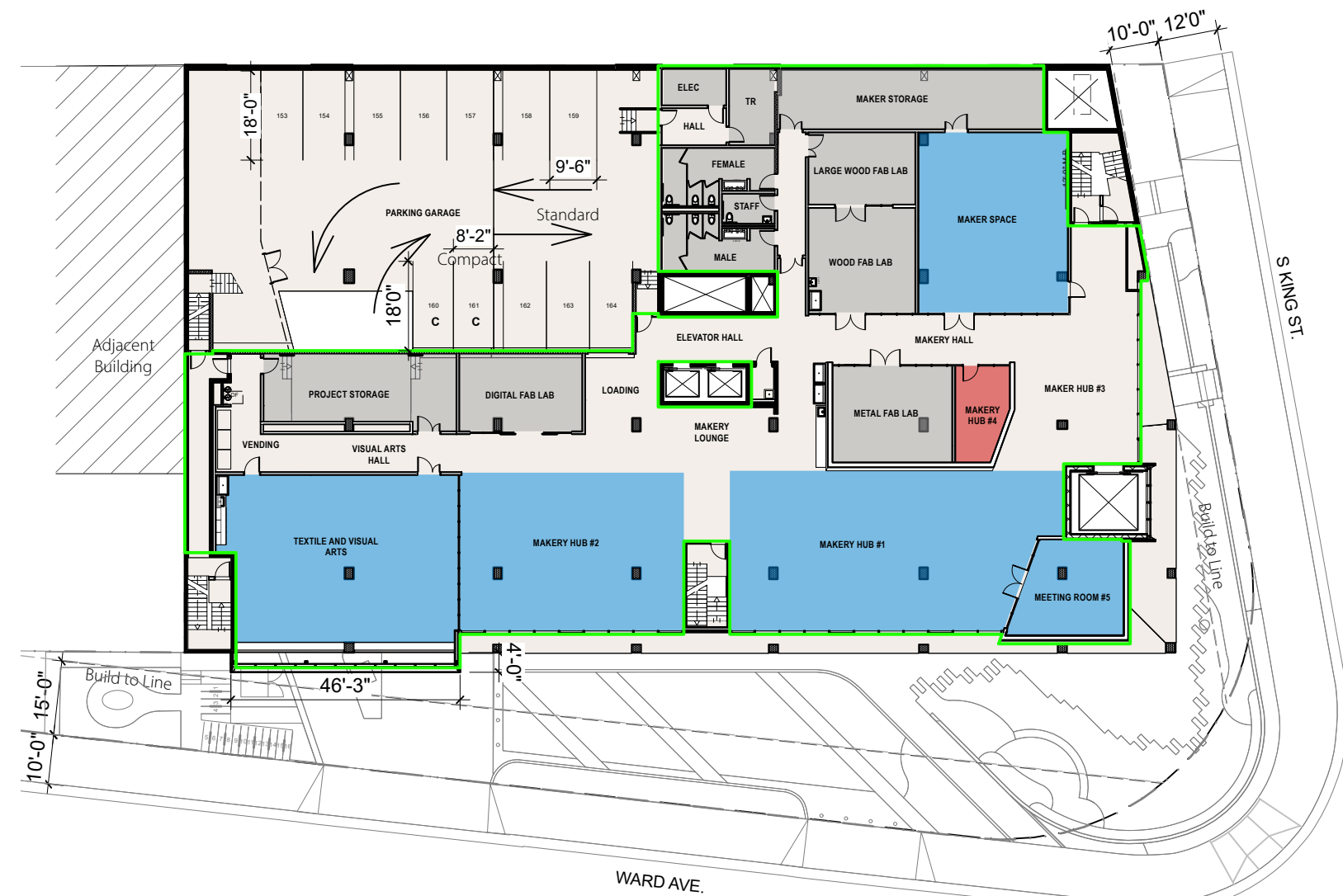


FLOOR AREA - Per MAR Description					
Floor Area (SF)					
Level	Classroom	Office	Support	Circulation	Total
Basement	0	0	3,960	706	4,666
1st Floor	7,351	1,443	3,203	3,072	15,069
2nd Floor	0	0	562	284	846
3rd Floor	0	0	563	233	796
4th Floor	6,531	196	3,581	5,198	15,506
5th Floor	8,920	540	4,362	7,413	21,235
6th Floor	1,269	1,296	998	6,689	10,252
7th Floor	4,918	3,575	3,044	7,111	18,648
8th Floor	8,413	187	743	944	10,287
Mechanical	0	0	0	0	0
Total	37,402	7,237	21,016	31,650	97,305

Parking Spaces Provided				
Level	Standard	Compact	Handicap	Combined
Basement	36	6	3	45
1st Floor	2	1	0	3
2nd Floor	36	11	2	49
3rd Floor	42	11	2	55
4th Floor	10	2	0	12
Total Provided	126	31	7	164

Legend (Proposed)

- Floor Area
 - Classroom
 - Office
 - Support
- Standard Parking ≥ 8.5' Wide x 18' Deep
 Compact Parking ≥ 7.5' Wide x 18' Deep
 Accessible Parking ≥ 9' Wide x 18' Deep
 Large Loading ≥ 12' Wide x 35' Deep x 13.5' High
 Small Loading ≥ 8.5' Wide x 19' Deep x 9' High
 Service Bay ≥ 12' Wide x 19' Deep x 13.5' High



FLOOR AREA - Per MAR Description (Existing)		Parking Requirements	
Level	Floor Area (SF)	Requirements per Use (MAR)	
	Commercial / Other	Multiplier	Required Spaces
Basement	2,764	1/450 SF	6
1st Floor	15,249	1/450 SF	34
2nd Floor	466	1/450 SF	1
3rd Floor	410	1/450 SF	1
4th Floor	15,666	1/450 SF	35
5th Floor	21,540	1/450 SF	48
6th Floor	8,020	1/450 SF	18
7th Floor	19,852	1/450 SF	44
8th Floor	1,165	1/450 SF	3
Mechanical	0	0	0
Total	85,132	N/A	189

Parking Spaces Provided (Existing)				
Level	Standard	Compact	Handicap	Combined
Basement	47	11	1	59
1st Floor	2	1	0	3
2nd Floor	46	13	2	61
3rd Floor	46	13	2	61
4th Floor	14	5	0	19
Total Provided	155	43	5	203

Legend (Existing)

- Floor Area
- ▤ Demo
- Demo - Slab



FLOOR AREA - Per MAR Description					
Floor Area (SF)					
Level	Classroom	Office	Support	Circulation	Total
Basement	0	0	3,960	706	4,666
1st Floor	7,351	1,443	3,203	3,072	15,069
2nd Floor	0	0	562	284	846
3rd Floor	0	0	563	233	796
4th Floor	6,531	196	3,581	5,198	15,506
5th Floor	8,920	540	4,362	7,413	21,235
6th Floor	1,269	1,296	998	6,689	10,252
7th Floor	4,918	3,575	3,044	7,111	18,648
8th Floor	8,413	187	743	944	10,287
Mechanical	0	0	0	0	0
Total	37,402	7,237	21,016	31,650	97,305

Parking Spaces Provided				
Level	Standard	Compact	Handicap	Combined
Basement	36	6	3	45
1st Floor	2	1	0	3
2nd Floor	36	11	2	49
3rd Floor	42	11	2	55
4th Floor	10	2	0	12
Total Provided	126	31	7	164

Legend (Proposed)

- Floor Area
- Classroom
- Office
- Support

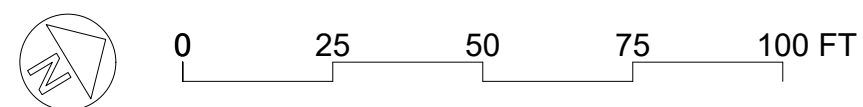
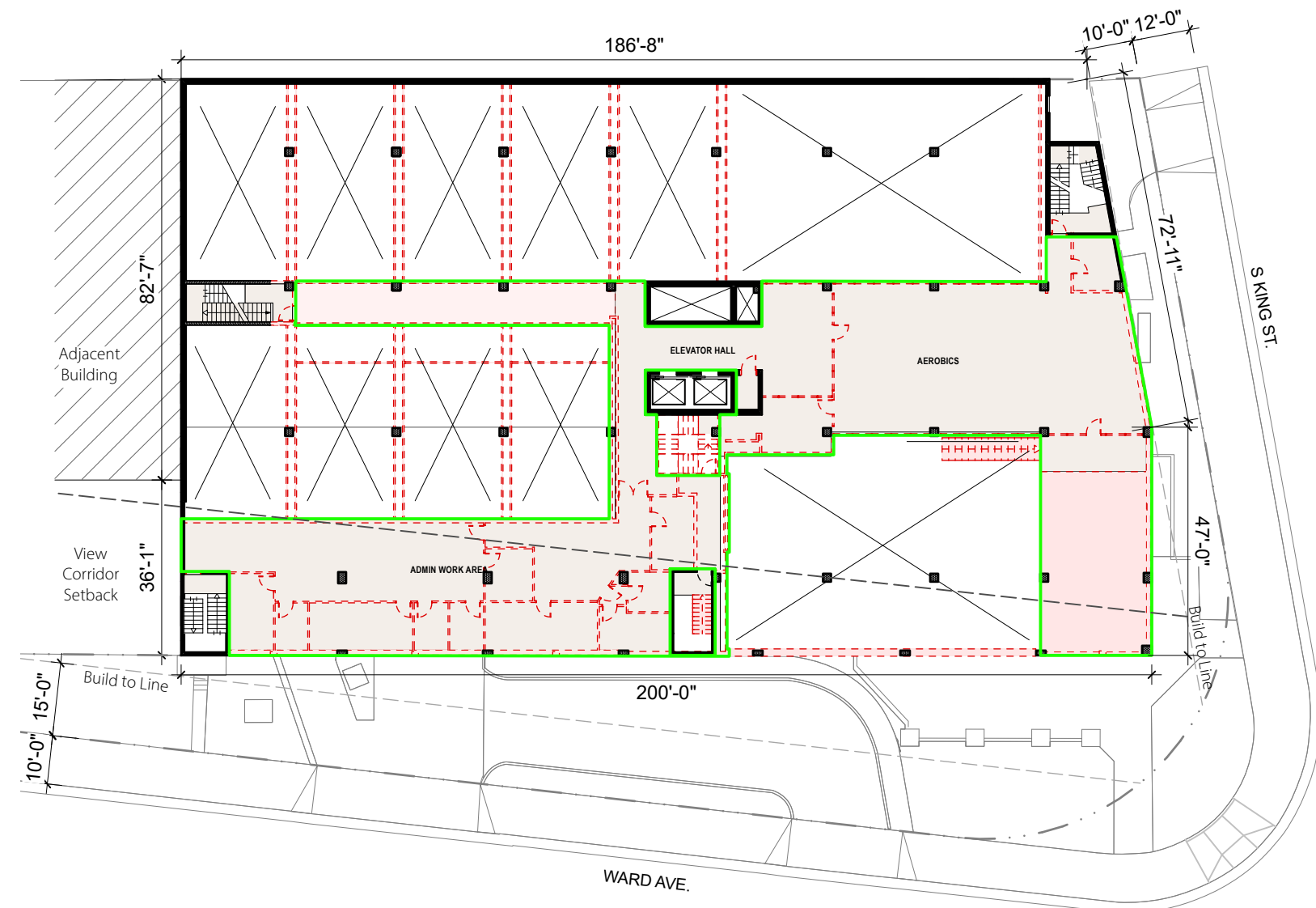


FLOOR AREA - Per MAR Description (Existing)		Parking Requirements	
Level	Floor Area (SF)	Requirements per Use (MAR)	
	Commercial / Other	Multiplier	Required Spaces
Basement	2,764	1/450 SF	6
1st Floor	15,249	1/450 SF	34
2nd Floor	466	1/450 SF	1
3rd Floor	410	1/450 SF	1
4th Floor	15,666	1/450 SF	35
5th Floor	21,540	1/450 SF	48
6th Floor	8,020	1/450 SF	18
7th Floor	19,852	1/450 SF	44
8th Floor	1,165	1/450 SF	3
Mechanical	0	0	0
Total	85,132	N/A	189

Parking Spaces Provided (Existing)				
Level	Standard	Compact	Handicap	Combined
Basement	47	11	1	59
1st Floor	2	1	0	3
2nd Floor	46	13	2	61
3rd Floor	46	13	2	61
4th Floor	14	5	0	19
Total Provided	155	43	5	203

Legend (Existing)

- Floor Area
- - - Demo
- Demo - Slab

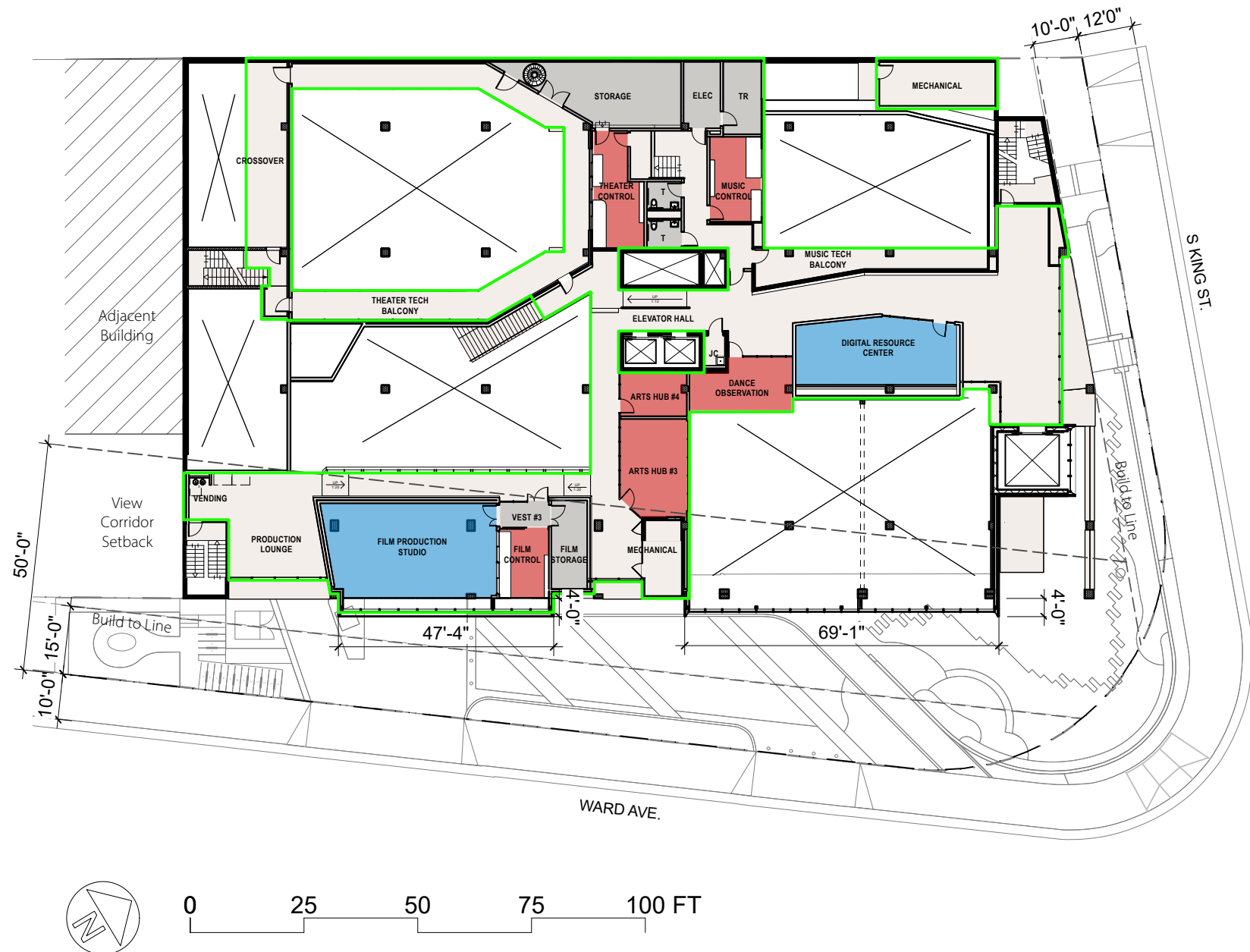


FLOOR AREA - Per MAR Description					
Floor Area (SF)					
Level	Classroom	Office	Support	Circulation	Total
Basement	0	0	3,960	706	4,666
1st Floor	7,351	1,443	3,203	3,072	15,069
2nd Floor	0	0	562	284	846
3rd Floor	0	0	563	233	796
4th Floor	6,531	196	3,581	5,198	15,506
5th Floor	8,920	540	4,362	7,413	21,235
6th Floor	1,269	1,296	998	6,689	10,252
7th Floor	4,918	3,575	3,044	7,111	18,648
8th Floor	8,413	187	743	944	10,287
Mechanical	0	0	0	0	0
Total	37,402	7,237	21,016	31,650	97,305

Parking Spaces Provided				
Level	Standard	Compact	Handicap	Combined
Basement	36	6	3	45
1st Floor	2	1	0	3
2nd Floor	36	11	2	49
3rd Floor	42	11	2	55
4th Floor	10	2	0	12
Total Provided	126	31	7	164

Legend (Proposed)

- Floor Area
- Classroom
- Office
- Support



Lili'uokalani Center

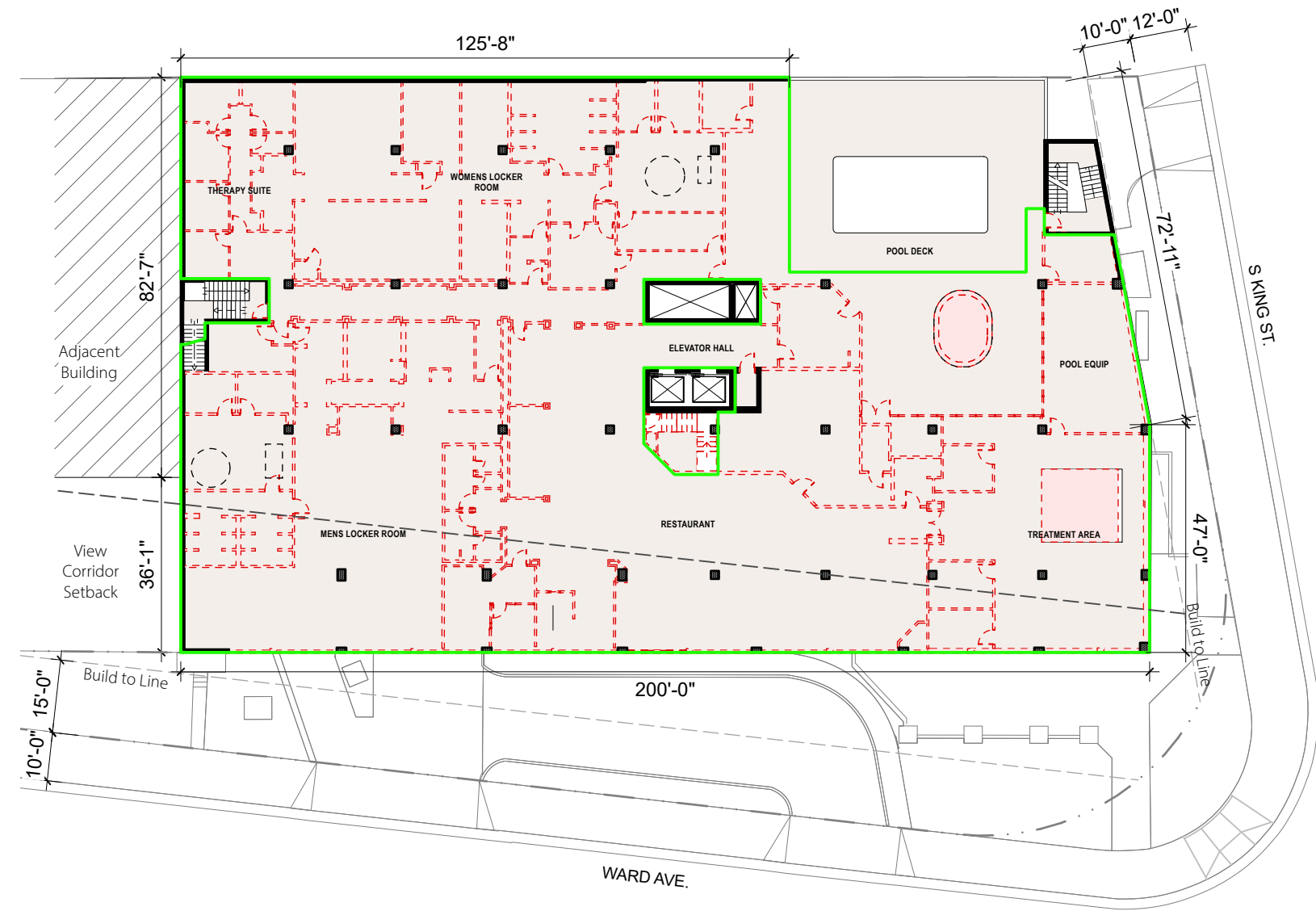
FIGURE 20: 6TH FLOOR - PROPOSED

FLOOR AREA - Per MAR Description (Existing)		Parking Requirements	
Level	Floor Area (SF)	Requirements per Use (MAR)	
	Commercial / Other	Multiplier	Required Spaces
Basement	2,764	1/450 SF	6
1st Floor	15,249	1/450 SF	34
2nd Floor	466	1/450 SF	1
3rd Floor	410	1/450 SF	1
4th Floor	15,666	1/450 SF	35
5th Floor	21,540	1/450 SF	48
6th Floor	8,020	1/450 SF	18
7th Floor	19,852	1/450 SF	44
8th Floor	1,165	1/450 SF	3
Mechanical	0	0	0
Total	85,132	N/A	189

Parking Spaces Provided (Existing)				
Level	Standard	Compact	Handicap	Combined
Basement	47	11	1	59
1st Floor	2	1	0	3
2nd Floor	46	13	2	61
3rd Floor	46	13	2	61
4th Floor	14	5	0	19
Total Provided	155	43	5	203

Legend (Existing)

- Floor Area
- ▨ Demo
- ▨ Demo - Slab



FLOOR AREA - Per MAR Description					
Floor Area (SF)					
Level	Classroom	Office	Support	Circulation	Total
Basement	0	0	3,960	706	4,666
1st Floor	7,351	1,443	3,203	3,072	15,069
2nd Floor	0	0	562	284	846
3rd Floor	0	0	563	233	796
4th Floor	6,531	196	3,581	5,198	15,506
5th Floor	8,920	540	4,362	7,413	21,235
6th Floor	1,269	1,296	998	6,689	10,252
7th Floor	4,918	3,575	3,044	7,111	18,648
8th Floor	8,413	187	743	944	10,287
Mechanical	0	0	0	0	0
Total	37,402	7,237	21,016	31,650	97,305

Parking Spaces Provided				
Level	Standard	Compact	Handicap	Combined
Basement	36	6	3	45
1st Floor	2	1	0	3
2nd Floor	36	11	2	49
3rd Floor	42	11	2	55
4th Floor	10	2	0	12
Total Provided	126	31	7	164

Legend (Proposed)

- Floor Area
- Classroom
- Office
- Support

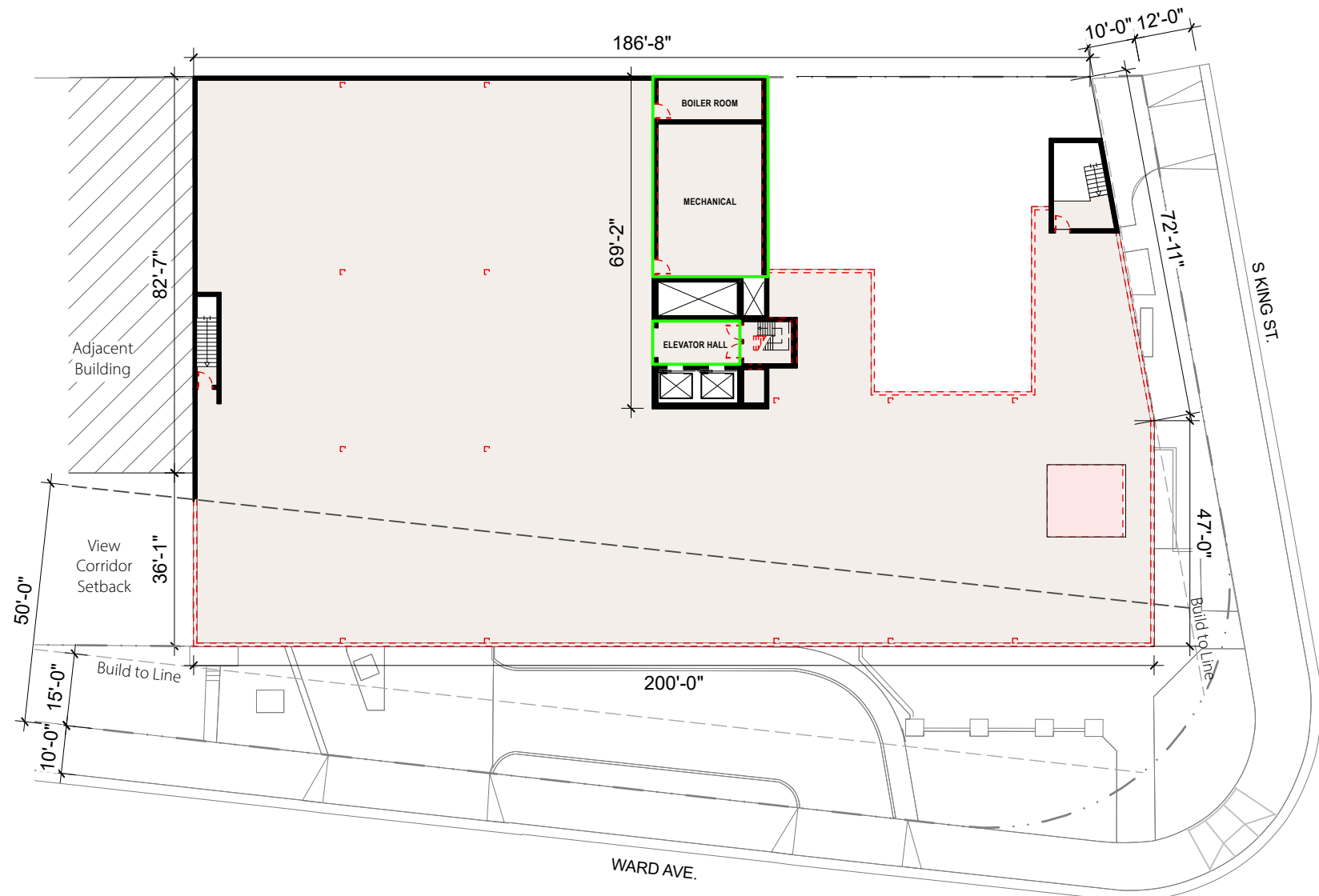


FLOOR AREA - Per MAR Description (Existing)		Parking Requirements	
Level	Floor Area (SF)	Requirements per Use (MAR)	
	Commercial / Other	Multiplier	Required Spaces
Basement	2,764	1/450 SF	6
1st Floor	15,249	1/450 SF	34
2nd Floor	466	1/450 SF	1
3rd Floor	410	1/450 SF	1
4th Floor	15,666	1/450 SF	35
5th Floor	21,540	1/450 SF	48
6th Floor	8,020	1/450 SF	18
7th Floor	19,852	1/450 SF	44
8th Floor	1,165	1/450 SF	3
Mechanical	0	0	0
Total	85,132	N/A	189

Parking Spaces Provided (Existing)				
Level	Standard	Compact	Handicap	Combined
Basement	47	11	1	59
1st Floor	2	1	0	3
2nd Floor	46	13	2	61
3rd Floor	46	13	2	61
4th Floor	14	5	0	19
Total Provided	155	43	5	203

Legend (Existing)

- Floor Area
- Demo
- Demo - Slab

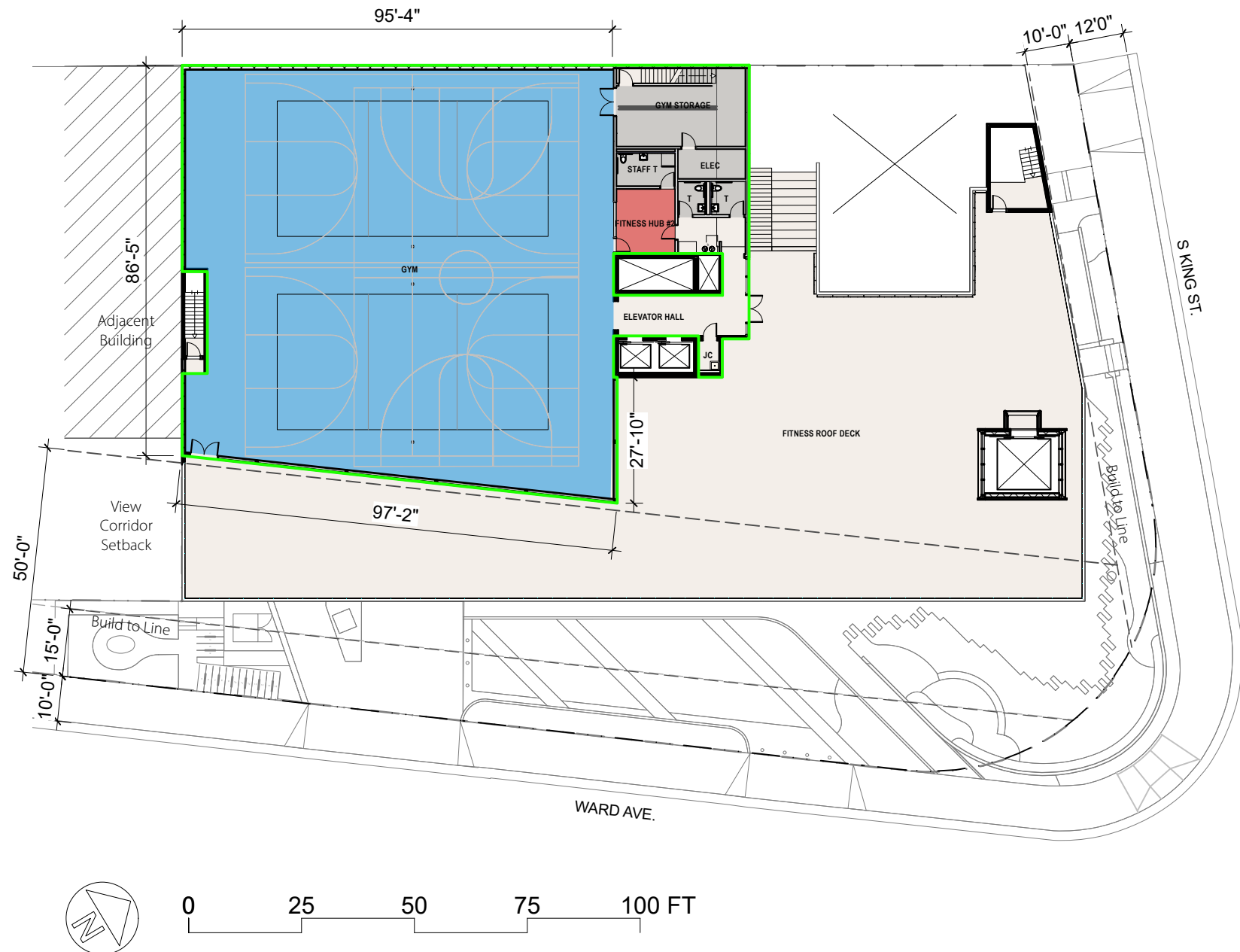


FLOOR AREA - Per MAR Description					
Floor Area (SF)					
Level	Classroom	Office	Support	Circulation	Total
Basement	0	0	3,960	706	4,666
1st Floor	7,351	1,443	3,203	3,072	15,069
2nd Floor	0	0	562	284	846
3rd Floor	0	0	563	233	796
4th Floor	6,531	196	3,581	5,198	15,506
5th Floor	8,920	540	4,362	7,413	21,235
6th Floor	1,269	1,296	998	6,689	10,252
7th Floor	4,918	3,575	3,044	7,111	18,648
8th Floor	8,413	187	743	944	10,287
Mechanical	0	0	0	0	0
Total	37,402	7,237	21,016	31,650	97,305

Parking Spaces Provided				
Level	Standard	Compact	Handicap	Combined
Basement	36	6	3	45
1st Floor	2	1	0	3
2nd Floor	36	11	2	49
3rd Floor	42	11	2	55
4th Floor	10	2	0	12
Total Provided	126	31	7	164

Legend (Proposed)

- Floor Area
- Classroom
- Office
- Support

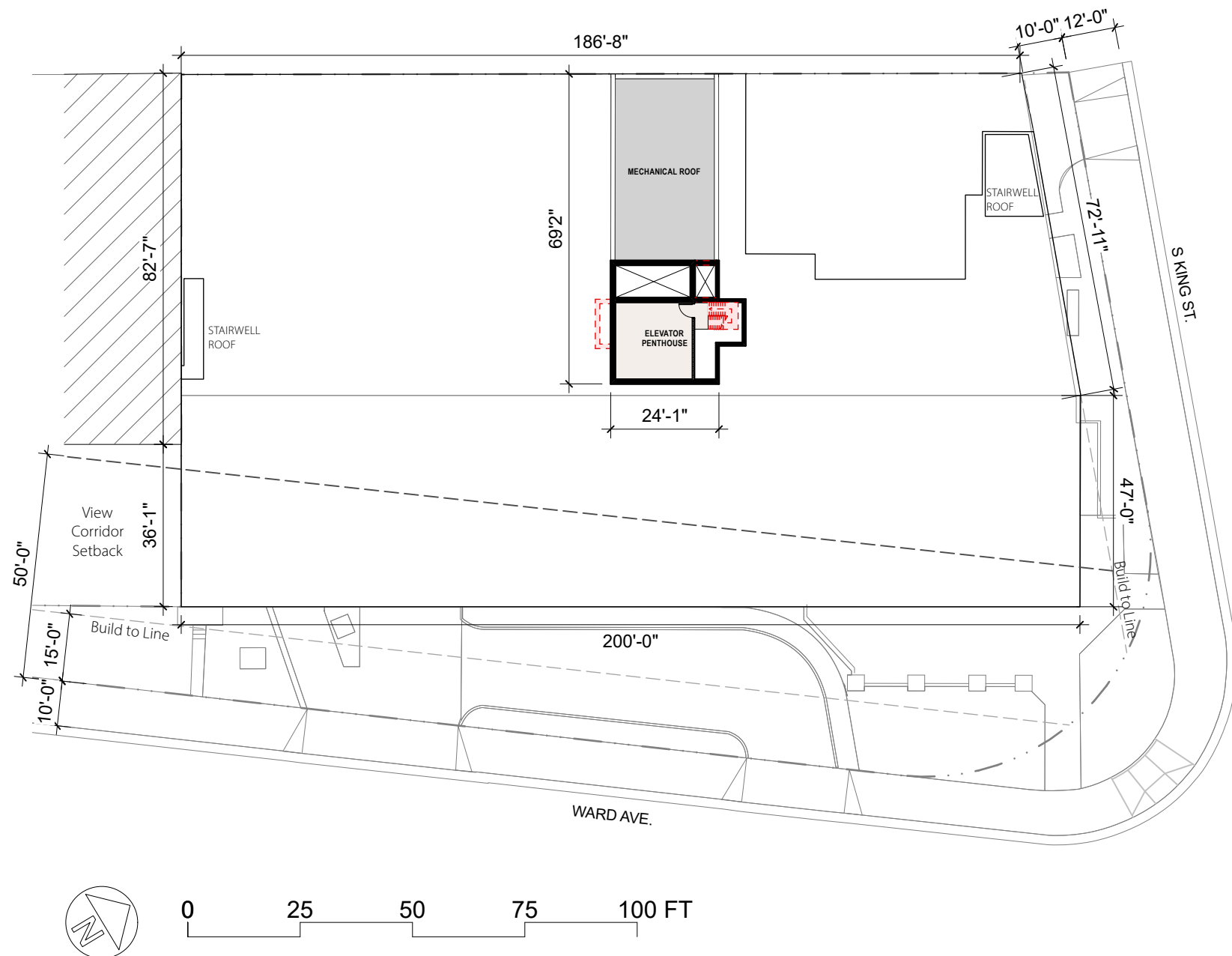


FLOOR AREA - Per MAR Description (Existing)		Parking Requirements	
Level	Floor Area (SF)	Requirements per Use (MAR)	
	Commercial / Other	Multiplier	Required Spaces
Basement	2,764	1/450 SF	6
1st Floor	15,249	1/450 SF	34
2nd Floor	466	1/450 SF	1
3rd Floor	410	1/450 SF	1
4th Floor	15,666	1/450 SF	35
5th Floor	21,540	1/450 SF	48
6th Floor	8,020	1/450 SF	18
7th Floor	19,852	1/450 SF	44
8th Floor	1,165	1/450 SF	3
Mechanical	0	0	0
Total	85,132	N/A	189

Parking Spaces Provided (Existing)				
Level	Standard	Compact	Handicap	Combined
Basement	47	11	1	59
1st Floor	2	1	0	3
2nd Floor	46	13	2	61
3rd Floor	46	13	2	61
4th Floor	14	5	0	19
Total Provided	155	43	5	203

Legend (Existing)

- Floor Area
- Demo
- Demo - Slab

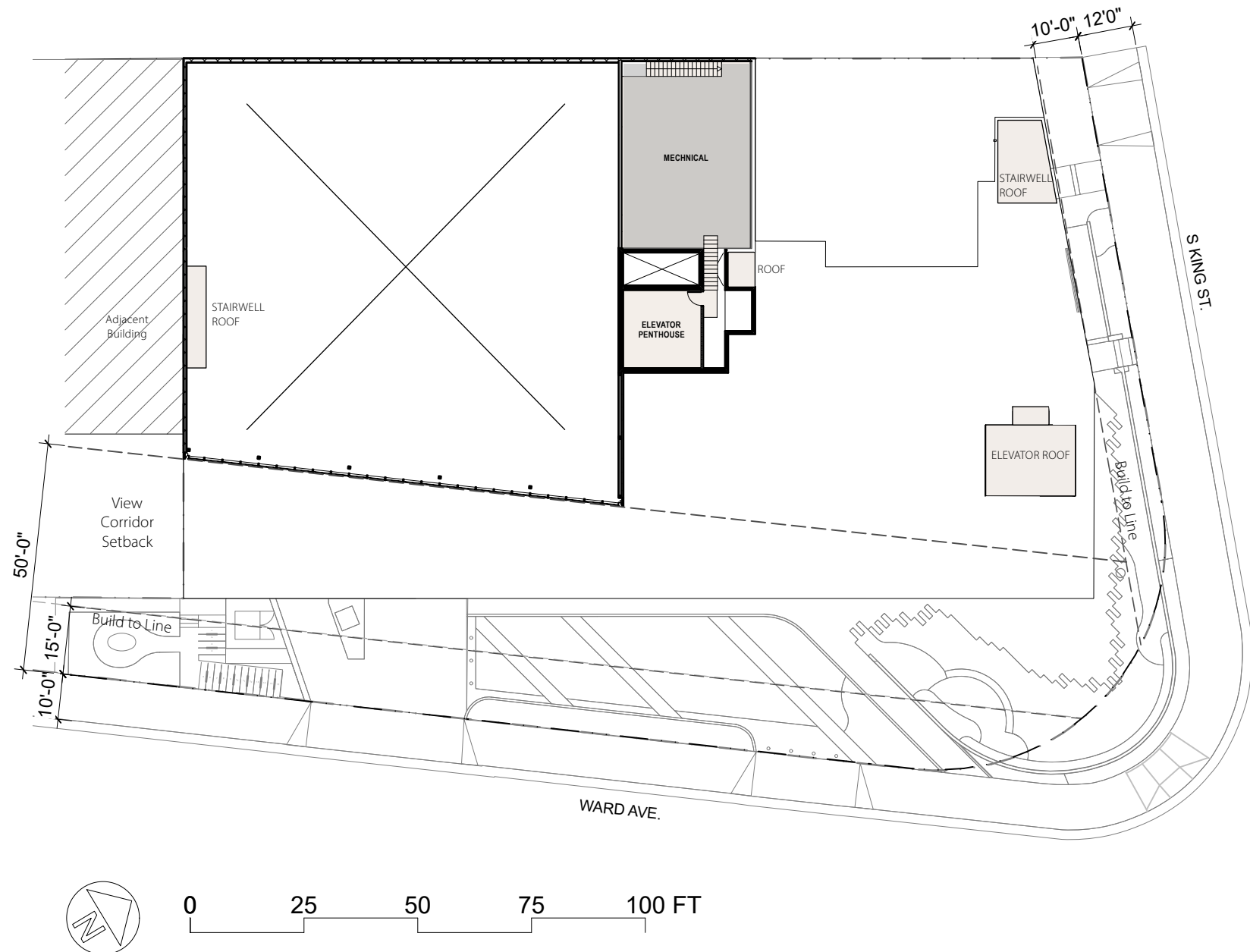


FLOOR AREA - Per MAR Description					
Floor Area (SF)					
Level	Classroom	Office	Support	Circulation	Total
Basement	0	0	3,960	706	4,666
1st Floor	7,351	1,443	3,203	3,072	15,069
2nd Floor	0	0	562	284	846
3rd Floor	0	0	563	233	796
4th Floor	6,531	196	3,581	5,198	15,506
5th Floor	8,920	540	4,362	7,413	21,235
6th Floor	1,269	1,296	998	6,689	10,252
7th Floor	4,918	3,575	3,044	7,111	18,648
8th Floor	8,413	187	743	944	10,287
Mechanical	0	0	0	0	0
Total	37,402	7,237	21,016	31,650	97,305

Parking Spaces Provided				
Level	Standard	Compact	Handicap	Combined
Basement	36	6	3	45
1st Floor	2	1	0	3
2nd Floor	36	11	2	49
3rd Floor	42	11	2	55
4th Floor	10	2	0	12
Total Provided	126	31	7	164

Legend (Proposed)

- Floor Area
- Classroom
- Office
- Support



ADJACENT BUILDING
+/- 160', APPROX.

Demo

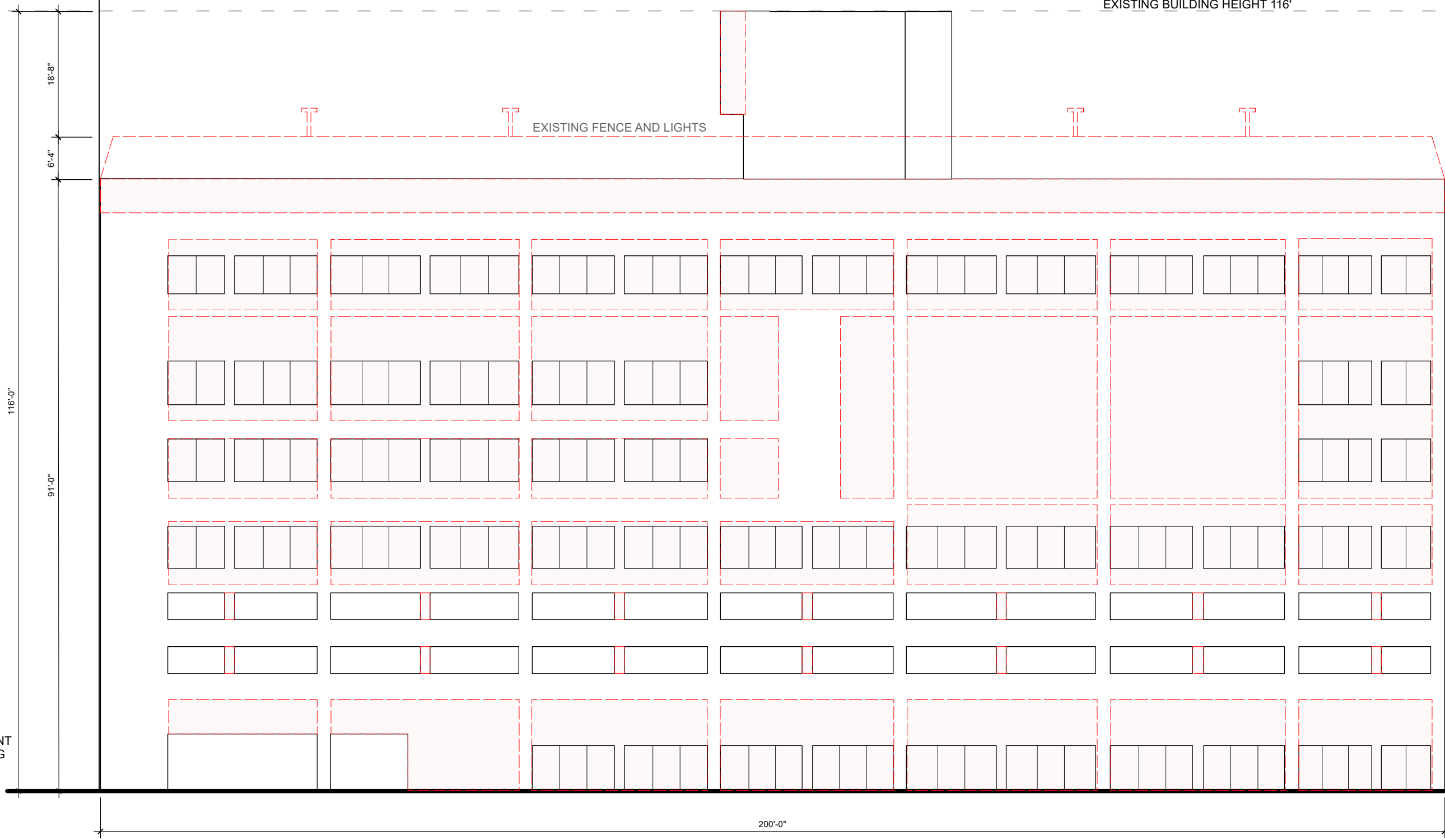
PROPERTY LINE

BUILD-TO LINE
(EAST ELEV.)

PROPERTY LINE

EXISTING BUILDING HEIGHT 116'

EXISTING FENCE AND LIGHTS

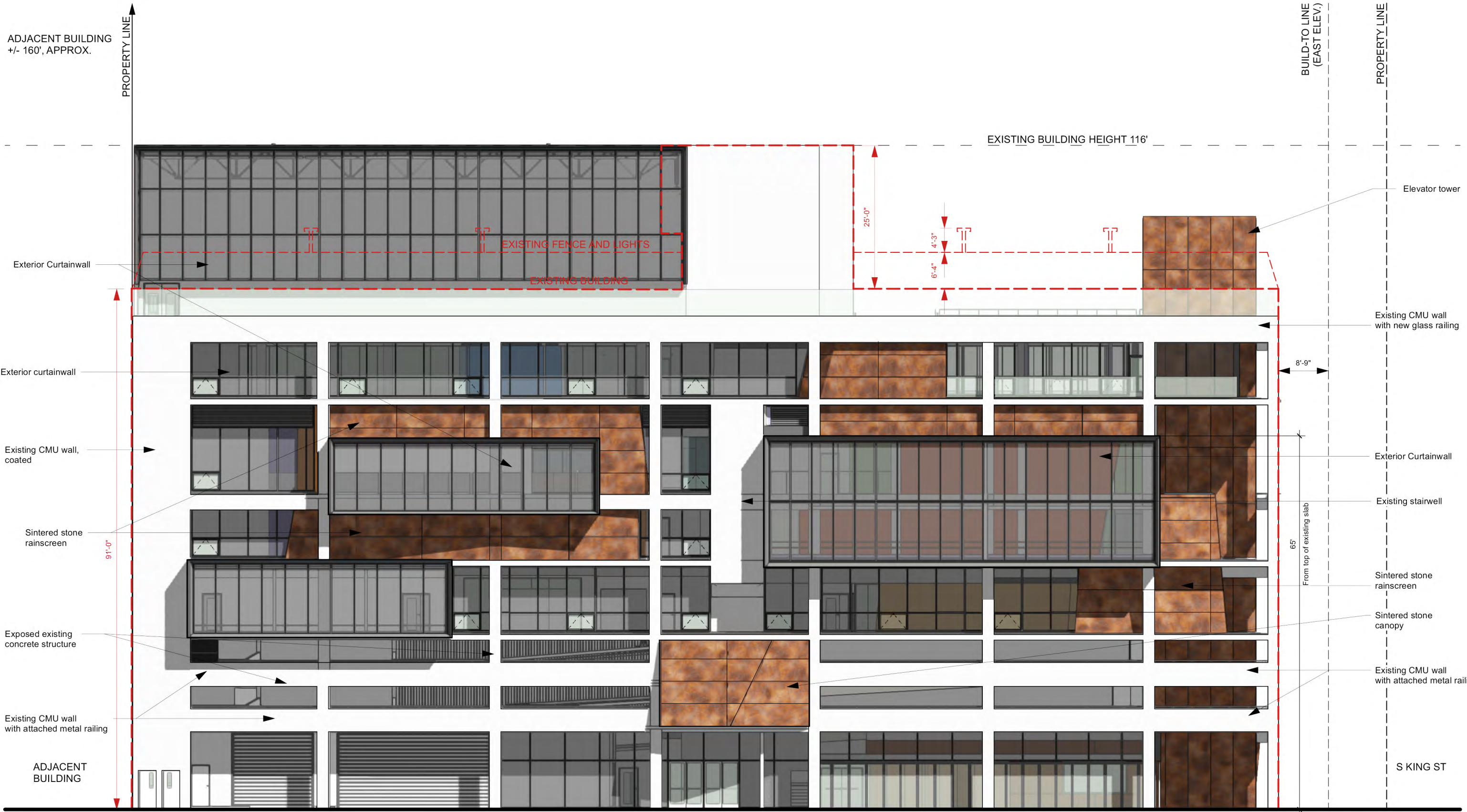


ADJACENT BUILDING

S KING ST

200'-0"

0 50 FT



0 50 FT



Demo

PROPERTY LINE

BUILD-TO LINE
(NORTH ELEV.)

PROPERTY LINE

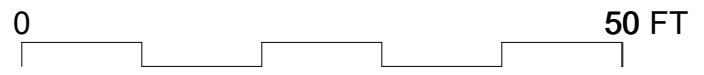
BUILDING HEIGHT 116'

EXISTING FENCE AND LIGHTS

18'-8"
6'-4"
116'-0"
91'-0"

WARD AVENUE

CEMETERY





0 50 FT



Demo

PROPERTY LINE

BUILD-TO LINE
(WEST ELEV.)

PROPERTY LINE

ADJACENT BUILDING
+/- 160', APPROX.

EXISTING BUILDING HEIGHT 116'

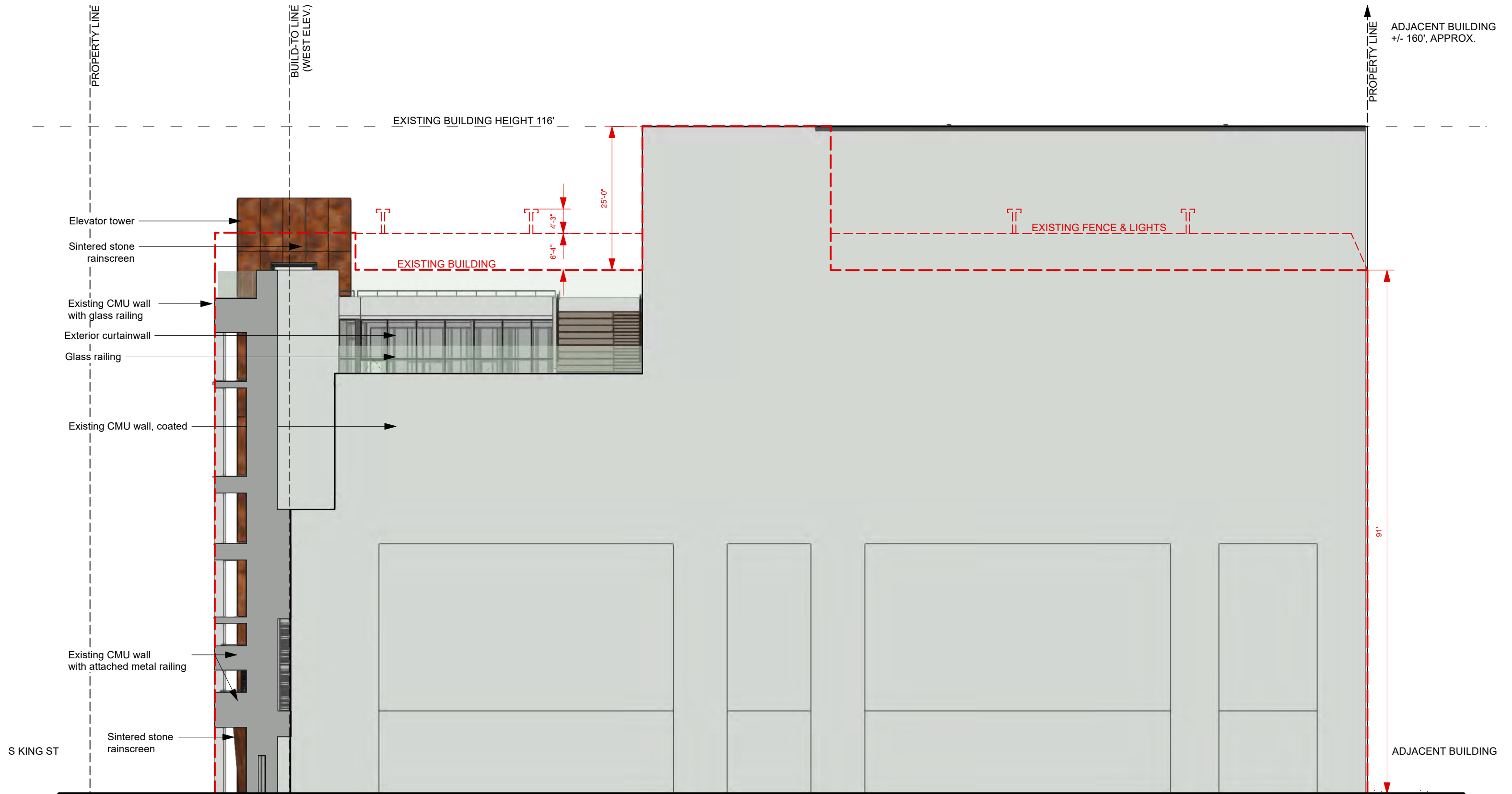
116'-0"

91'-0"

S KING ST

ADJACENT BUILDING

0 50 FT



0 50 FT



Demo

ADJACENT BUILDING +/- 160', APPROX.

BUILD-TO LINE
(NORTH ELEV.)

BUILD-TO LINE
(SOUTH ELEV.)

PROPERTY LINE

BUILDING HEIGHT 116'

18'-8"

EXISTING FENCE AND LIGHTS

6'-4"

EXISTING BUILDING

91'-0"

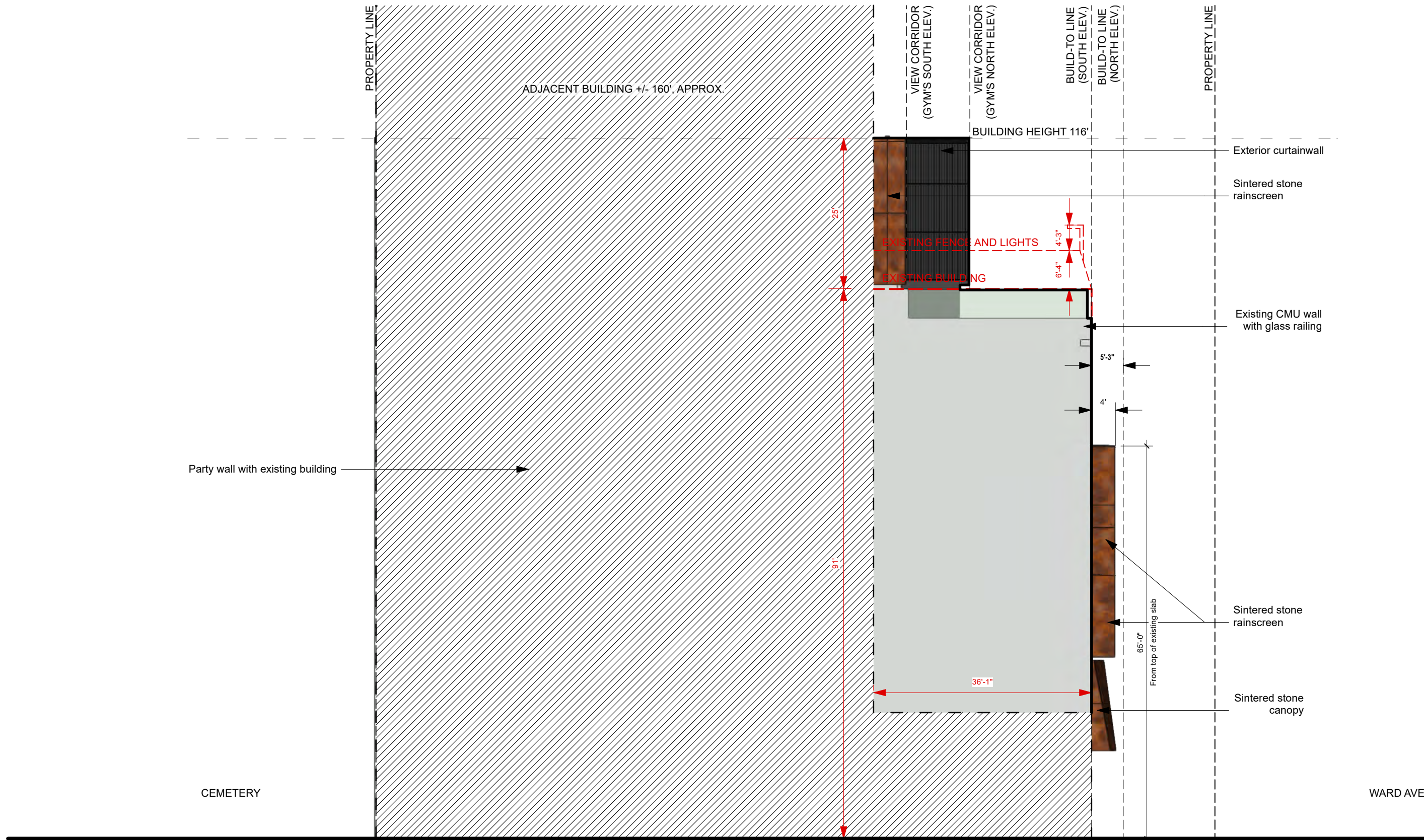
116'-0"

36'-1"

CEMETERY

WARD AVE

0 50 FT



0 50 FT

ADJACENT BUILDING
+/- 160', APPROX.

PROPERTY LINE

BUILD-TO LINE
(SECTION CUT)

PROPERTY LINE

EXISTING BUILDING HEIGHT 116'

Roof / Parapet
116'-0"

Elevator Room
100'-8"

Mech Penhouse
93'-8"

Eighth
83'-0"

Seventh
71'-6"

Sixth
55'-0"

Fifth
43'-6"

Fourth
30'-6"

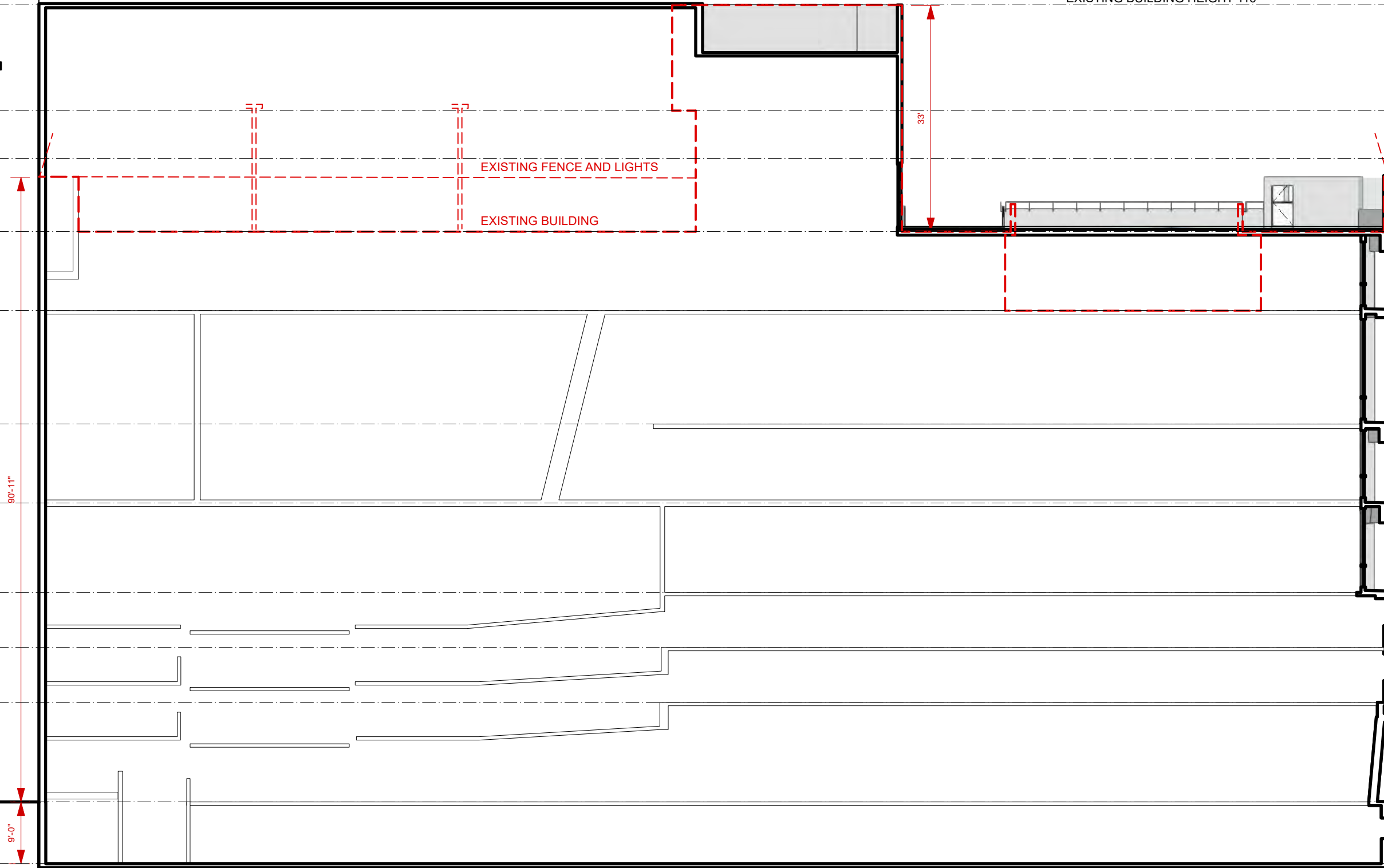
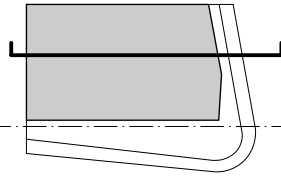
Third
22'-6"

Second
14'-6"

S KING ST

Ground
0"

Basement
-9'-0"

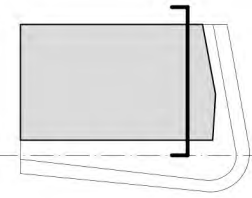


90'-11"

33'

9'-0"

ADJACENT BUILDING



Sintured stone rainscreen

Existing CMU wall with new glass railing

Sintured stone rainscreen

WARD AVENUE

PROPERTY LINE

BUILD-TO LINE (SECTION CUT)

VIEW CORRIDOR (GYM'S NORTH ELEV.)

PROPERTY LINE

BUILDING HEIGHT 116'

Roof / Parapet 116'-0"

Elevator Room 100'-8"

Mech Penhouse 93'-8"

Eighth 83'-0"

Seventh 71'-6"

Sixth 55'-0"

Fifth 43'-6"

Fourth 30'-6"

Third 22'-6"

Second 14'-6"

Ground 0"

Basement -9'-0"

Stucco wall to match CMU coating

EXISTING BUILDING

EXISTING FENCE AND LIGHTS

91'-0"

65'
From top of existing slab

4'

9'-0"

25'-0"

6'-4"

4'-3"

0 50 FT

