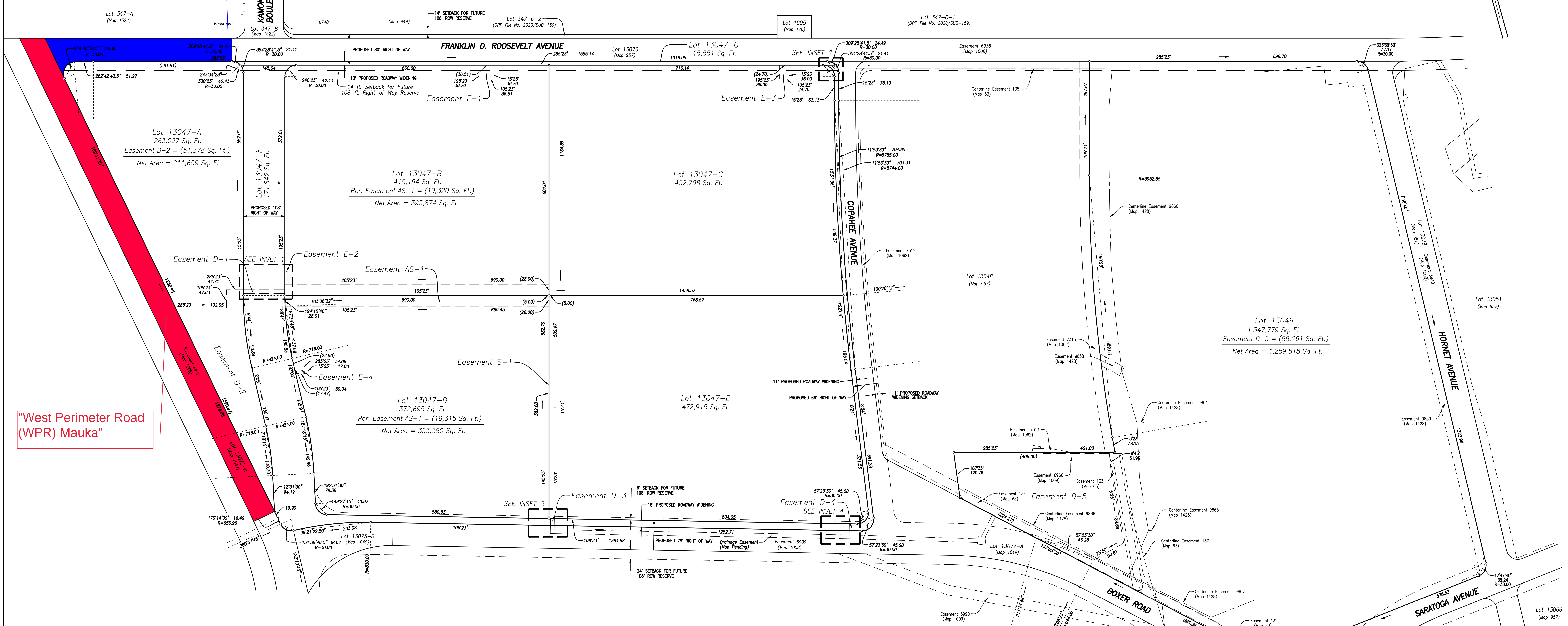


"Franklin D. Roosevelt (FDR) West"



"West Perimeter Road (WPR) Mauka"

Owners:
 TMK 9-1-013: 002 HUNT COMMUNITIES HAWAII LLC
 TMK 9-1-013: 004 HUNT COMMUNITIES HAWAII LLC

Notes:
 Lot 13047-F and Lot 13047-G are roadway lots.

Area of Easement:
 Easement AS-1 for Access and Sewer Purposes affecting Lots 13047-B and 13047-D in favor of the Community Association = 38,635 Sq. Ft.
 Easement D-1 for Drainage Purposes affecting Lot 13047-F in favor of the Community Association = 1,080 Sq. Ft.
 Easement D-2 for Drainage, Flowage, and Access Purposes affecting Lot 13047-A in favor of the Community Association = 51,378 Sq. Ft.
 Easement D-3 for Drainage Purposes affecting Lot 13047-F in favor of the Community Association = 180 Sq. Ft.
 Easement D-4 for Drainage Purposes affecting Lot 13047-F in favor of the Community Association = 180 Sq. Ft.
 Easement D-5 for Drainage, Flowage, and Access Purposes affecting Lot 13047-A in favor of the Community Association = 88,261 Sq. Ft.
 Easement E-1 for Electrical Purposes affecting Lot 13047-B in favor of Hawaiian Electric Company (HECO) = 1,340 Sq. Ft.
 Easement E-2 for Electrical Purposes affecting Lot 13047-B in favor of Hawaiian Electric Company (HECO) = 163 Sq. Ft.
 Easement E-3 for Electrical Purposes affecting Lot 13047-C in favor of Hawaiian Electric Company (HECO) = 890 Sq. Ft.
 Easement E-4 for Electrical Purposes affecting Lot 13047-D in favor of Hawaiian Electric Company (HECO) = 545 Sq. Ft.
 Easement S-1 for Sewer Purposes affecting Lots 13047-D and 13047-E in favor of Kalaheo Water Company = 5,829 Sq. Ft.

**SUBDIVISION OF LOT 13047 (MAP 957) OF LAND COURT APPLICATION 1069
 INTO LOTS 13047-A TO 13047-G, INCLUSIVE
 DESIGNATION OF EASEMENT AS-1 AFFECTING LOTS 13047-B AND 13047-D
 DESIGNATION OF EASEMENT D-1 AFFECTING LOT 13047-F
 DESIGNATION OF EASEMENTS D-2, D-3, AND D-4 AFFECTING LOT 13047-A
 DESIGNATION OF EASEMENT D-5 AFFECTING LOT 13049
 DESIGNATION OF EASEMENTS E-1 AND E-2 AFFECTING LOT 13047-B
 DESIGNATION OF EASEMENT E-3 AFFECTING LOT 13047-C
 DESIGNATION OF EASEMENT E-4 AFFECTING LOT 13047-D
 DESIGNATION OF EASEMENT S-1 AFFECTING LOTS 13047-D AND 13047-E
 AND DESIGNATION OF SETBACKS FOR FUTURE 108-FT. RIGHT-OF-WAY RESERVE
 AFFECTING LOTS 13047-A TO 13047-G, INCLUSIVE**

AT HONOLULU, IWA, OAHU, HAWAII

R. M. TOWILL CORPORATION
 Ryan M. Suzuki
 Licensed Professional Land Surveyor
 Certificate Number 10059
 Land Court Certificate Number 280
 4/30/22
 Expiration Date