

AMENDED MITIGATION PROPOSAL

April 5, 2024

RE: After-the-fact submittal to State Historic Preservation Division (SHPD), HRS Chapter 6E-42 and Historic Preservation Covenant Review
Building 152 (Quonset Hut), Parcel 10, TMK No. 9-1-013: 097
HICRIS No. 2022PR00692

Hunt Communities Hawai'i is in receipt of SHPD's review letter for the project above, dated March 27, 2024 (Doc. No. 2403JLP03). Hunt agrees to complete the mitigation requested, and in keeping with SHPD's request, is providing this Amended Mitigation Proposal to address concerns about the mitigation that was proposed (website) for the Dreamhouse project. To follow are the mitigation tasks we propose to complete, which have been modified per SHPD's comments.

Quonset Hut (Former Facs. 152/153) HABS

Mitigation will be undertaken in the form of Architectural Recordation as a short form Historic American Building Survey (HABS), to include 5 large-format exterior photographs, and a written report that describes the building's evolution over time (starting as two side-by-side Quonset huts and expanding over the years to its current form). As requested in SHPD's letter, the HABS report will include historical photographs of the Quonset hut showing its condition before the alterations (expansion of large-scale vehicular door at front) were made. If our sub-contractor, MASON, cannot find historical era photographs of the Quonset hut, survey photographs taken by MASON in 2014 will be used (example is below). At least two 2014 survey photographs will be printed at large scale, then archivally (large-format) photographed by Franzen Photography, for inclusion in the HABS recordation. The documentation will be submitted to NPS as a donated report. The final HABS will be submitted to SHPD via HICRIS along with the NPS acceptance letter.

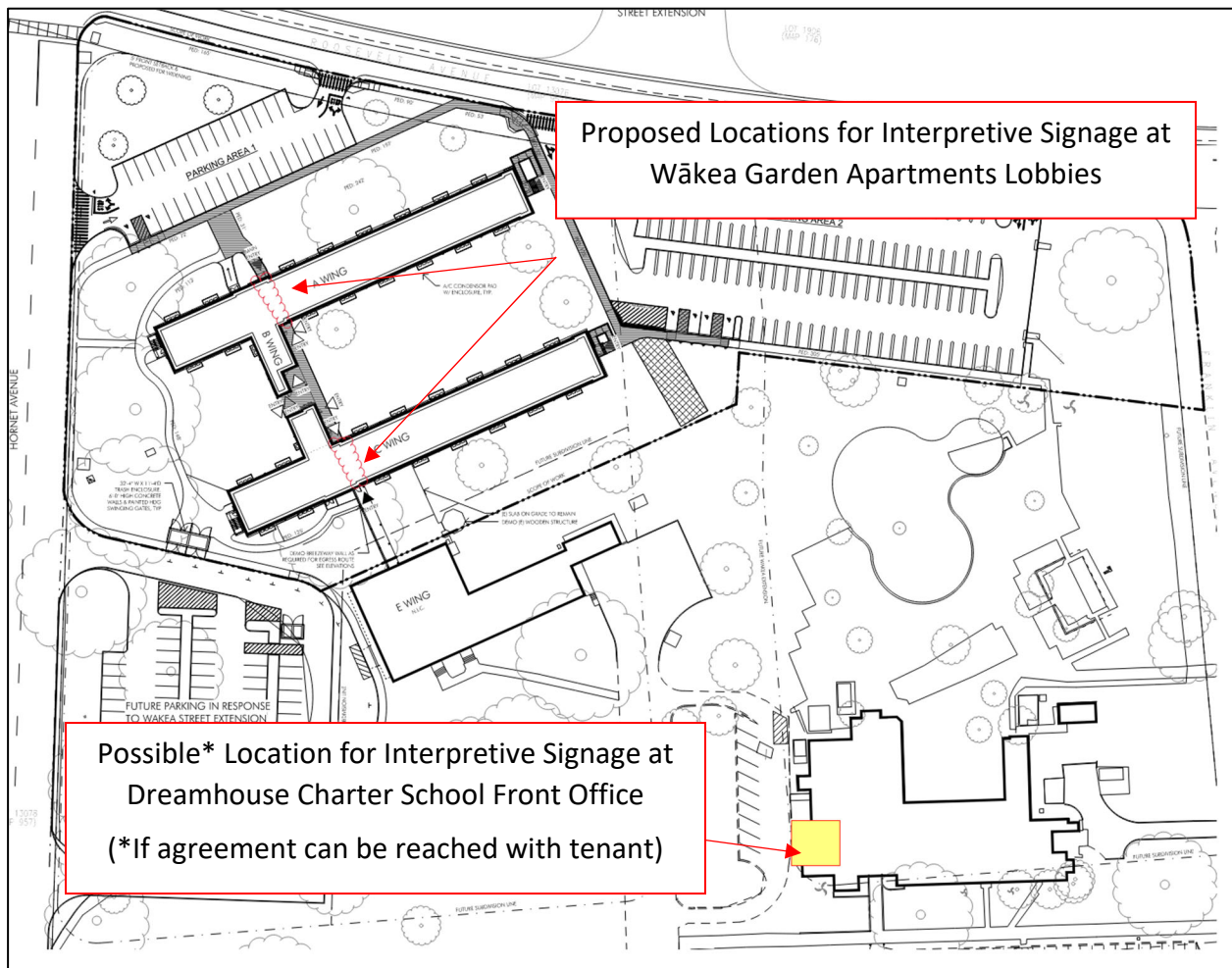


EXHIBIT 15

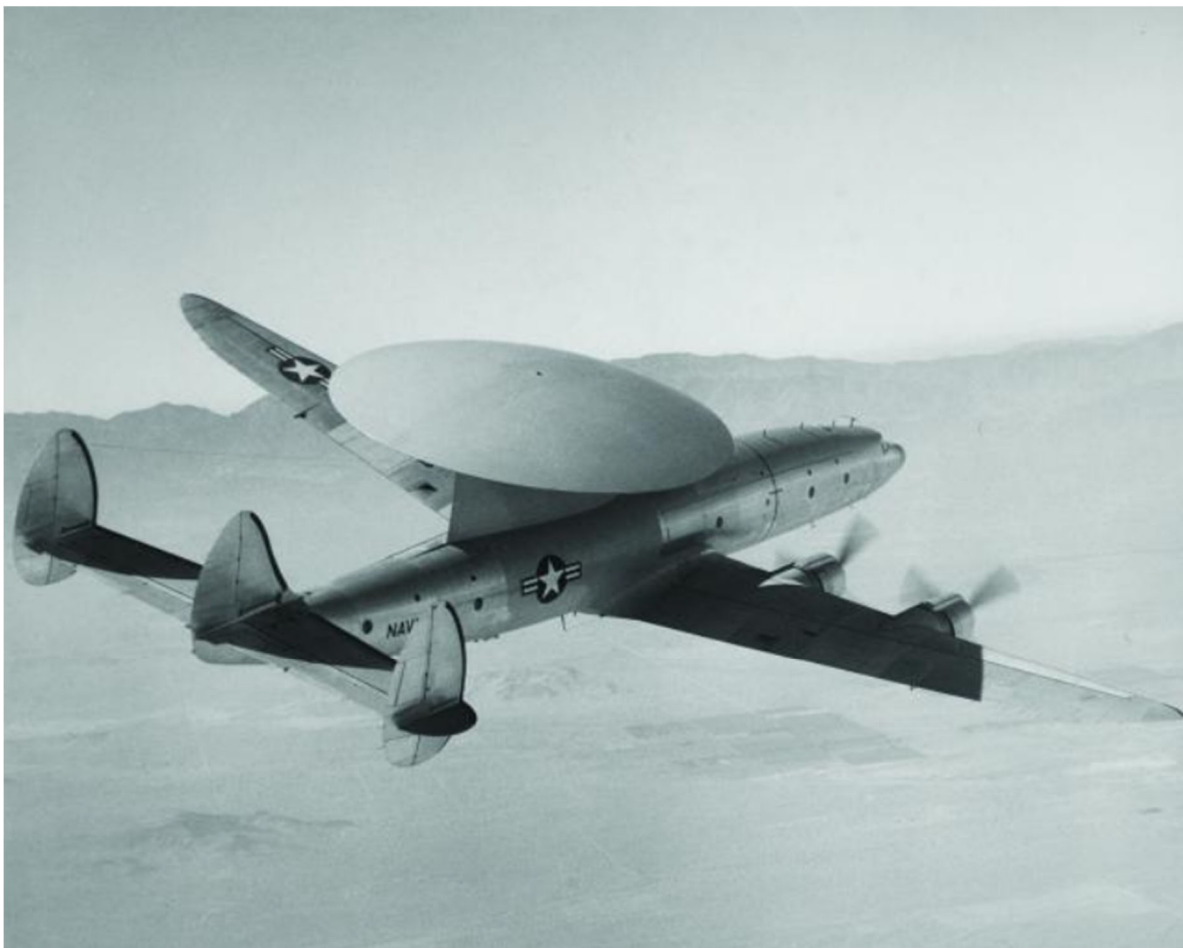
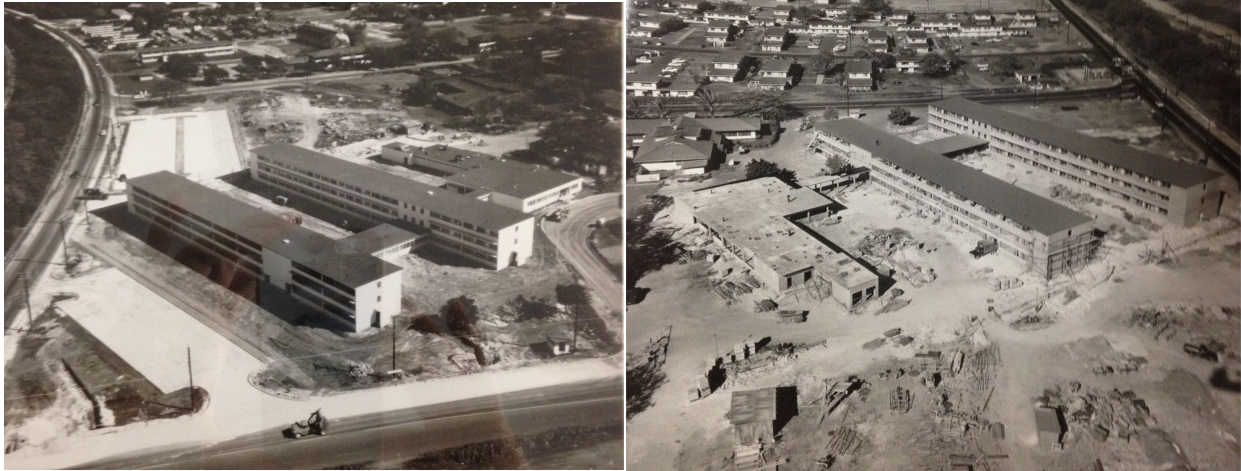
Interpretive Signs/Panels (Dreamhouse/Former Fac. 77)

Mitigation for Dreamhouse/former Fac. 77 will be undertaken in the form of Interpretive signage. Our sub-contractor MASON will prepare one (24" x 36") Interpretive Signage panel that will include the development, history, and use of the two conjoined buildings that made up the former Facility 77 (Bachelor's Officer Quarters and Mess Hall). This complex housed officers of the Navy's Pacific Barrier Program. The Pacific Barrier program operated aircraft patrols above the Pacific Ocean that formed an early warning radar picket to detect a possible Soviet attack on the United States. The panel will also include, as appropriate, historical photographs of the former Naval Air Station Barbers Point during the Cold War era.

As shown in the site map below, the panel will be installed in both lobbies of the Wākea Garden Apartments (former Bachelor Officer Quarters), and if the tenant who operates the Dreamhouse Charter School (former Mess hall) can accommodate the panel on the wall in their lobby, one will be installed there as well.



Images below are historic photographs dated 1957 showing Facility 77/ Bachelor's Officer Quarters and Mess Hall during and just after construction, and an image of a Navy warning signal aircraft used in the Pacific Barrier Program. Photographs such as these and others found during research may be included in the Interpretive Panel to interpret the history and significance of the former BOQ/Messhall complex.



WV-2 Warning Star aircraft in flight (U.S. Naval Institute Photo Archive)