

# Athletic Complex Improvements McKinley High School

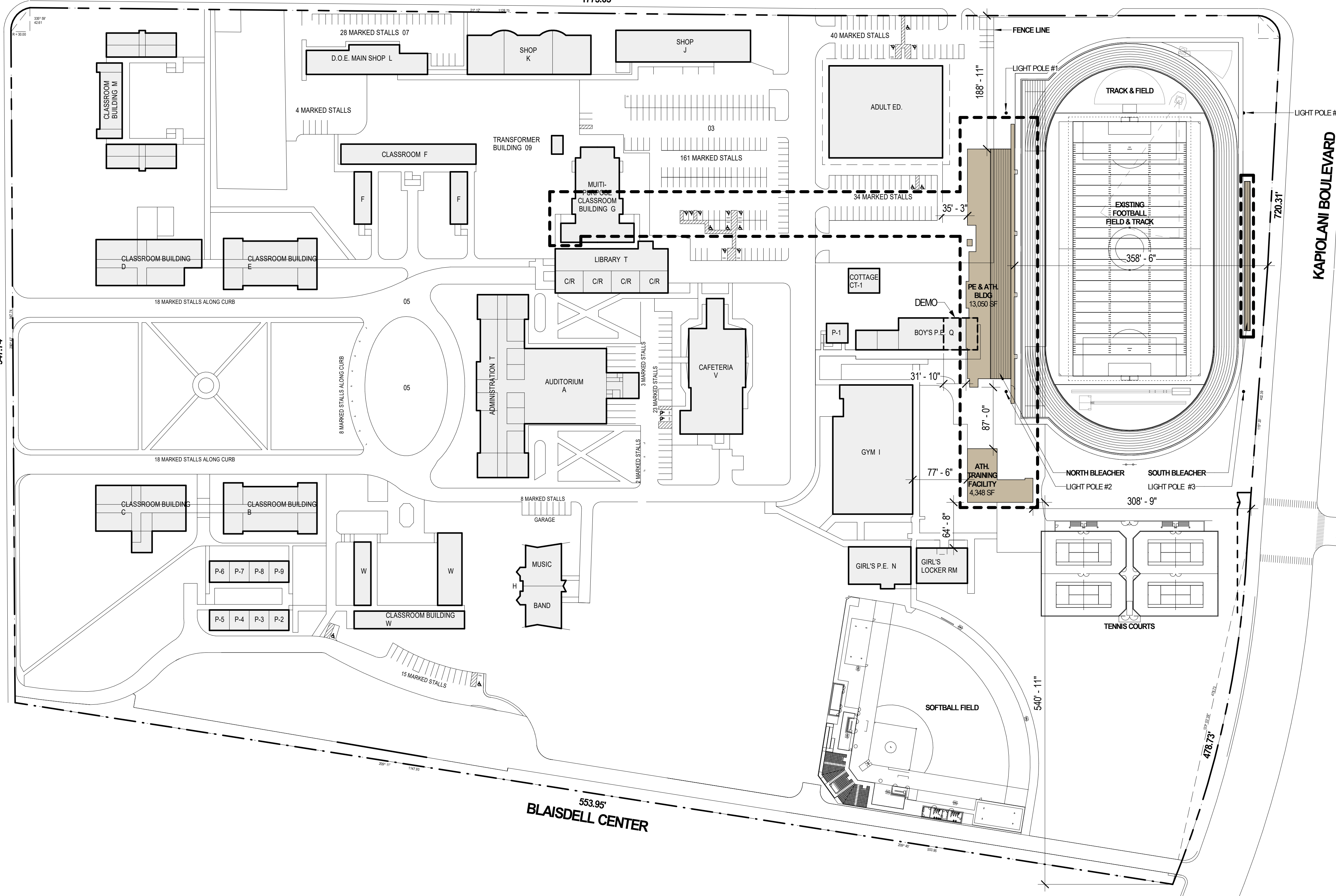






PENSACOLA STREET  
1775.05'

SOUTH KING STREET  
947.74'



**LEGEND:**

- EXISTING BUILDINGS
- PROPOSED

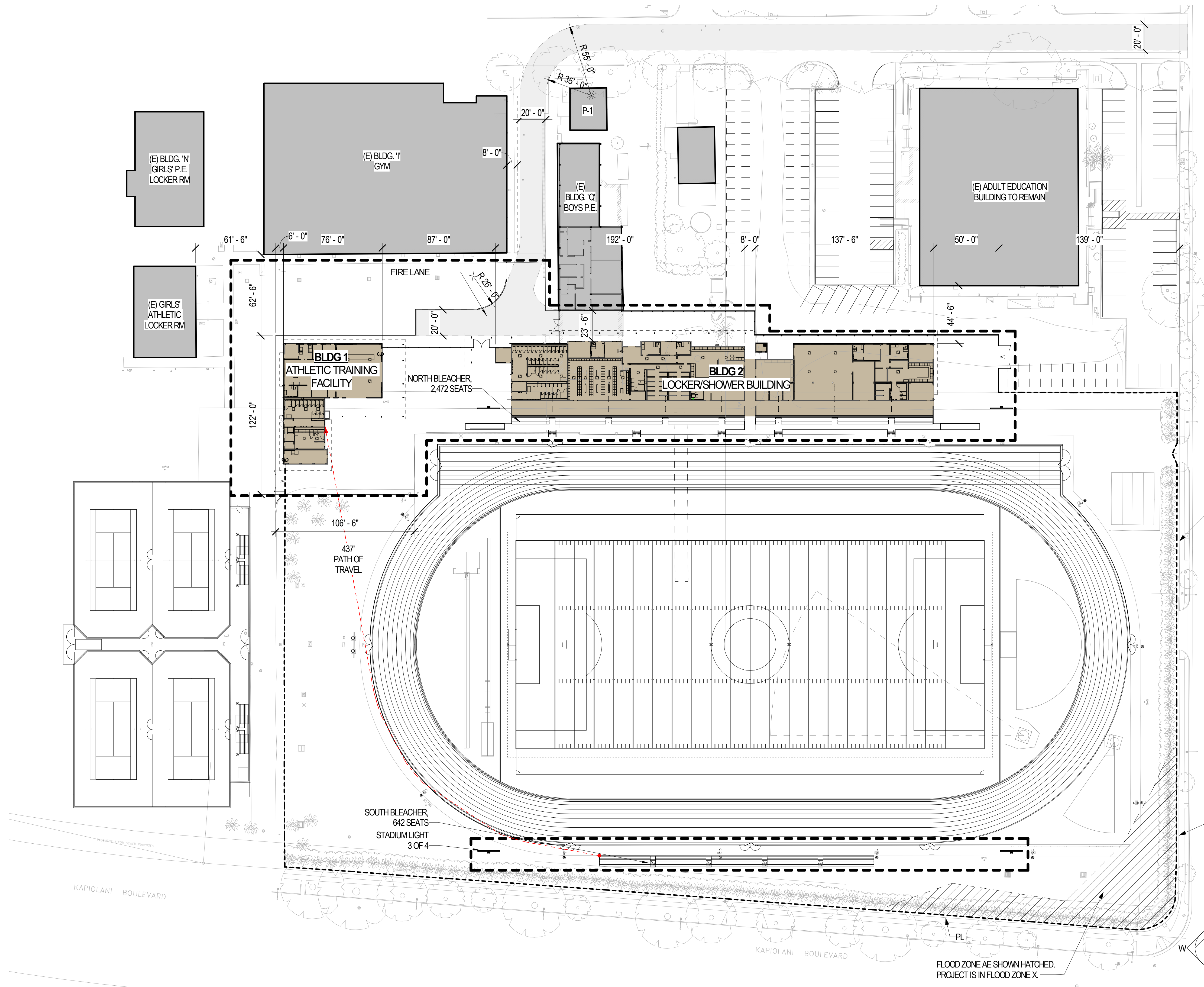
KAPIOLANI BOULEVARD

KAMAKEE STREET

BLAISDELL CENTER  
553.95'

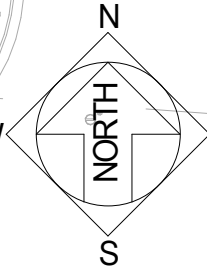
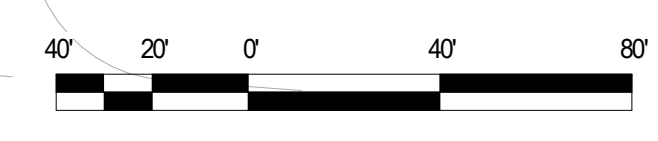


8/31/2024 3:48:29 PM Autodesk Docs//218051-01 McKinley HS Athletic Complex/MHS\_BleacherBuilding\_PermitSet\_A22.rvt



**LEGEND TO DRAWING**

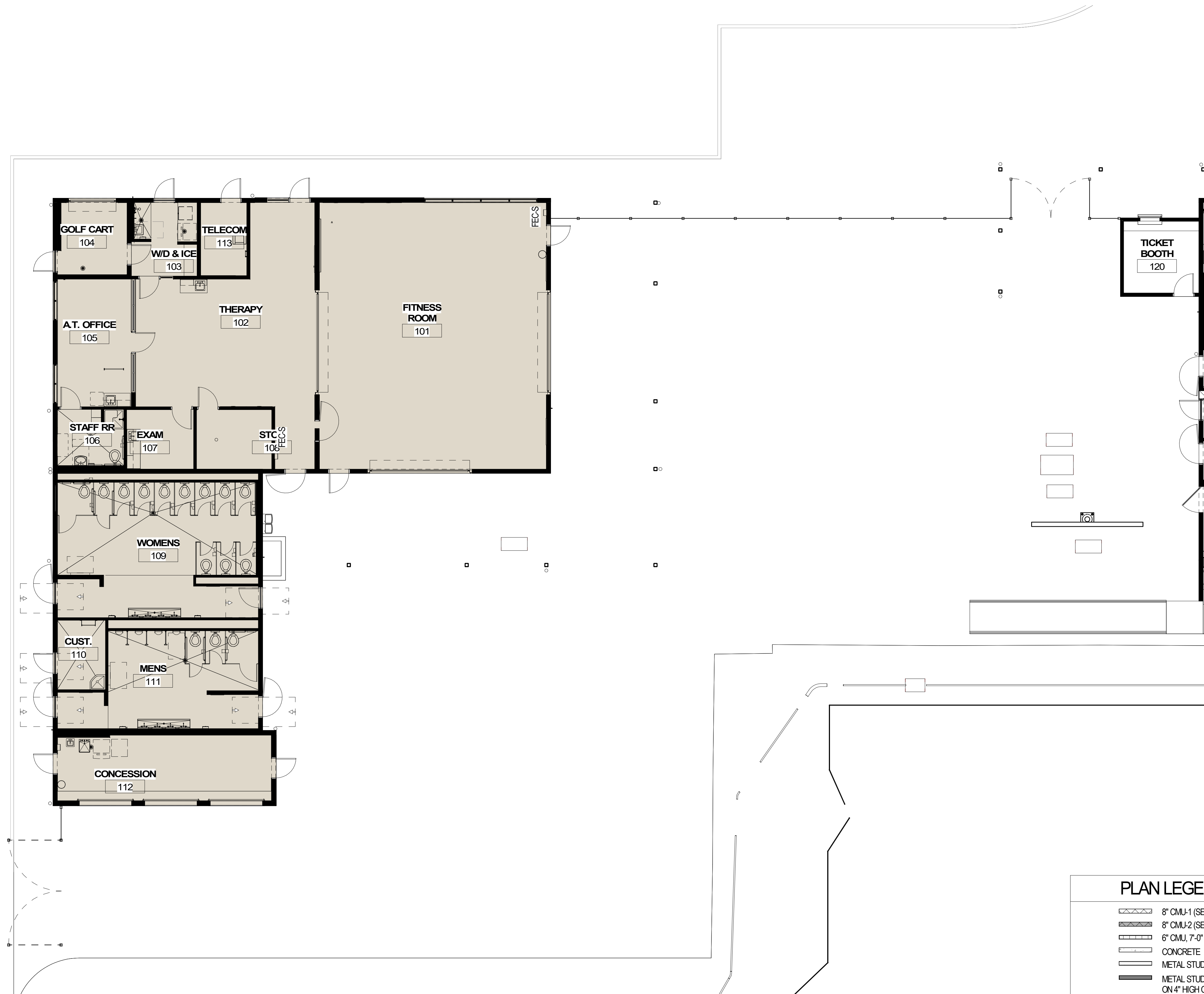
- PROPERTY LINE
- - - ACCESSIBLE PATH
- AREA OF WORK



**1 ARCHITECTURAL SITE PLAN**  
SCALE: 1" = 40'-0"

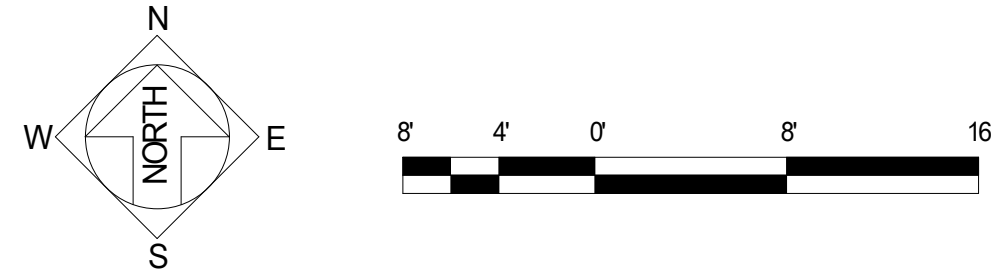
FLOOD ZONE AE SHOWN HATCHED.  
PROJECT IS IN FLOOD ZONE X.

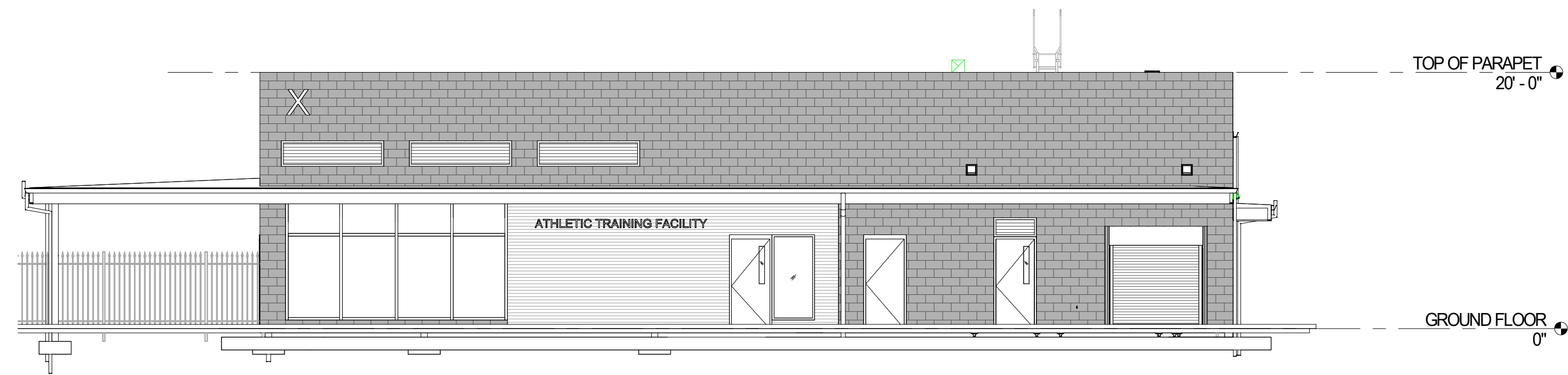




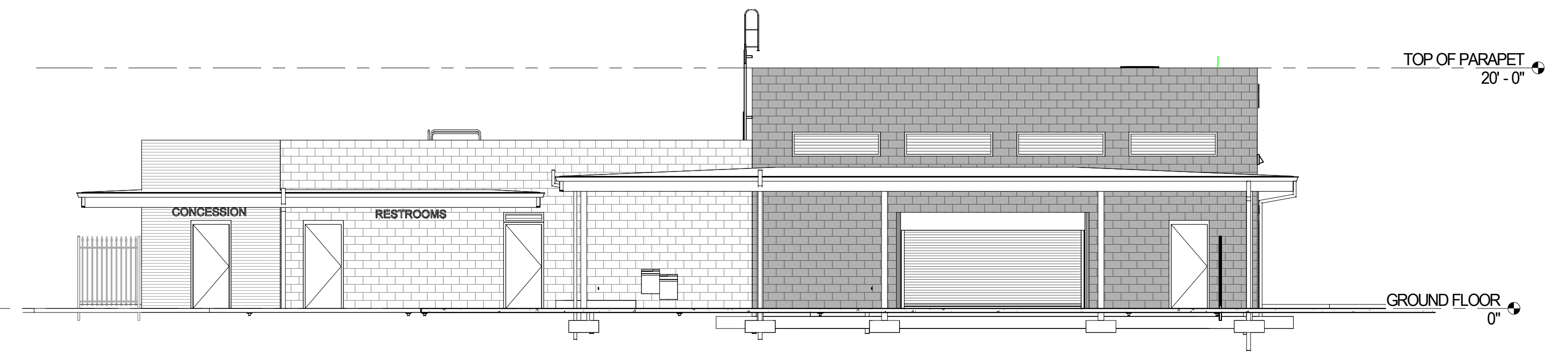
**1** BLDG 1 FLOOR PLAN - ATHLETIC TRAINING FACILITY  
SCALE: 1/8" = 1'-0"

PLAN LEGEND	
	8' CMU-1 (SEE A-611)
	8' CMU-2 (SEE A-611)
	6' CMU, 7'-0" HIGH
	CONCRETE
	METAL STUD WALL
	METAL STUD WALL ON 4" HIGH CONC. CURB
	CMU LOCKER BENCH WALLS 1' HIGH, SEE DET

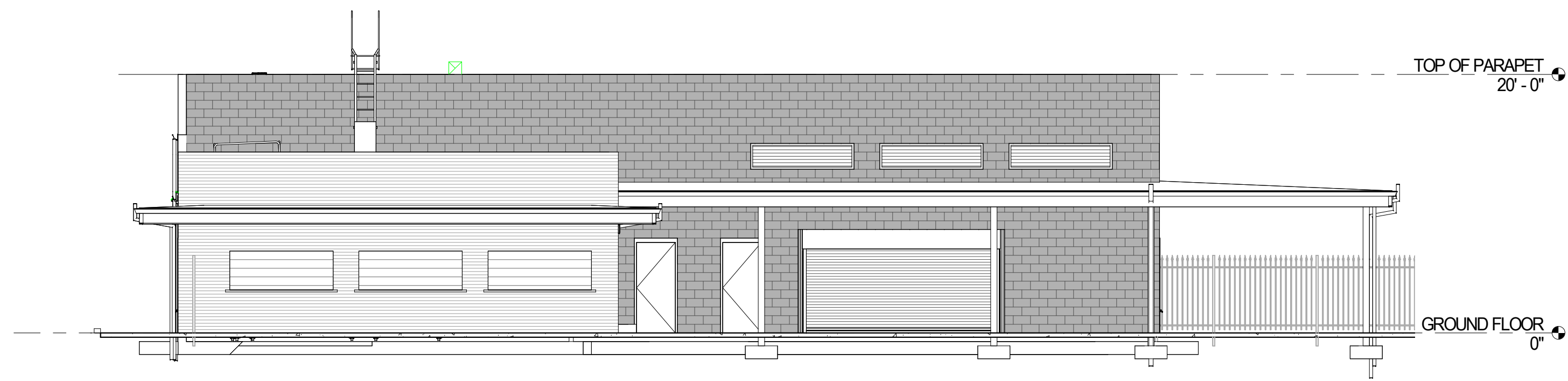




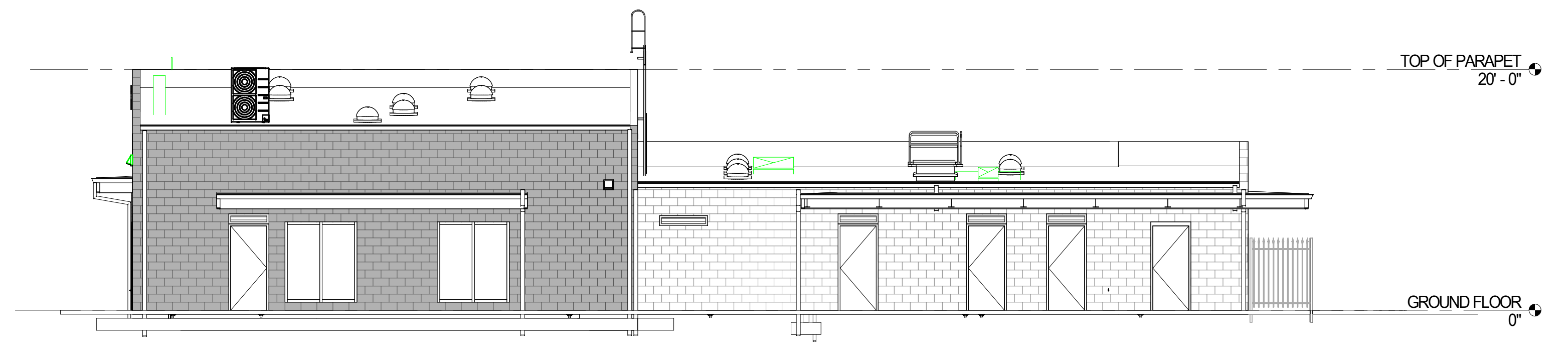
**1** NORTH ELEVATION  
SCALE: 1/8" = 1'-0"



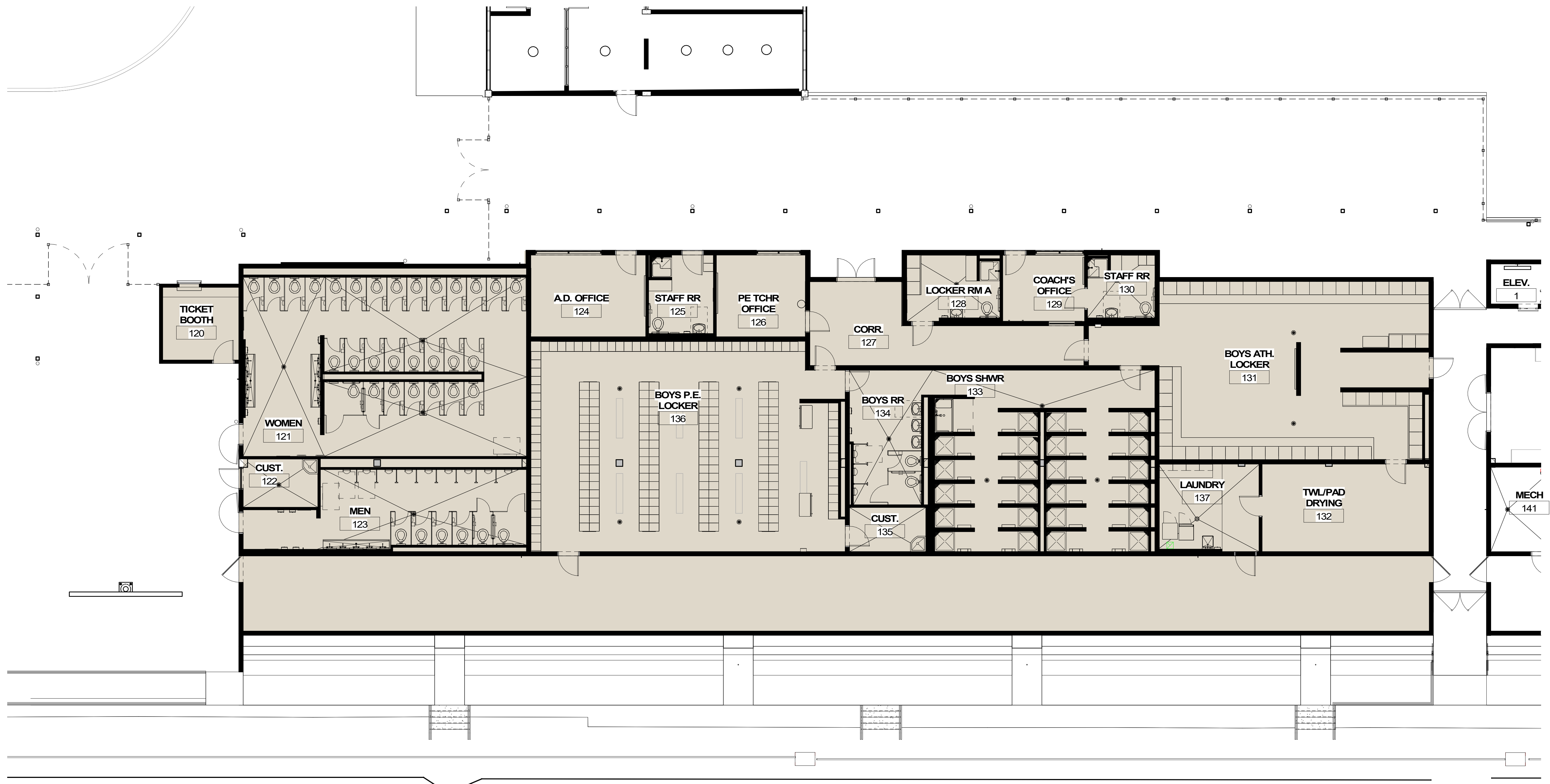
**2** EAST ELEVATION  
SCALE: 1/8" = 1'-0"



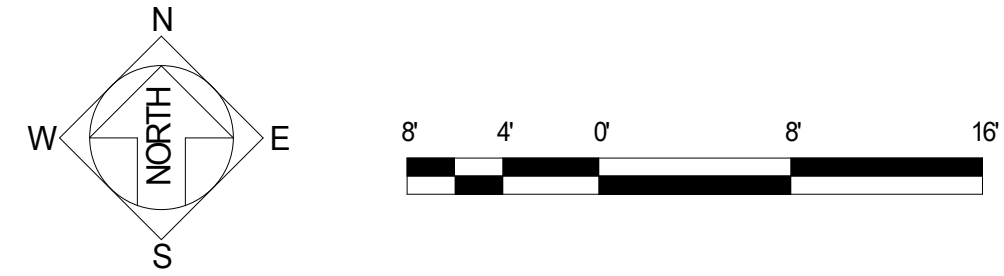
**3** SOUTH ELEVATION  
SCALE: 1/8" = 1'-0"



**4** WEST ELEVATION  
SCALE: 1/8" = 1'-0"



**1 BLDG 2.A FLOOR PLAN**  
SCALE: 1/8" = 1'-0"

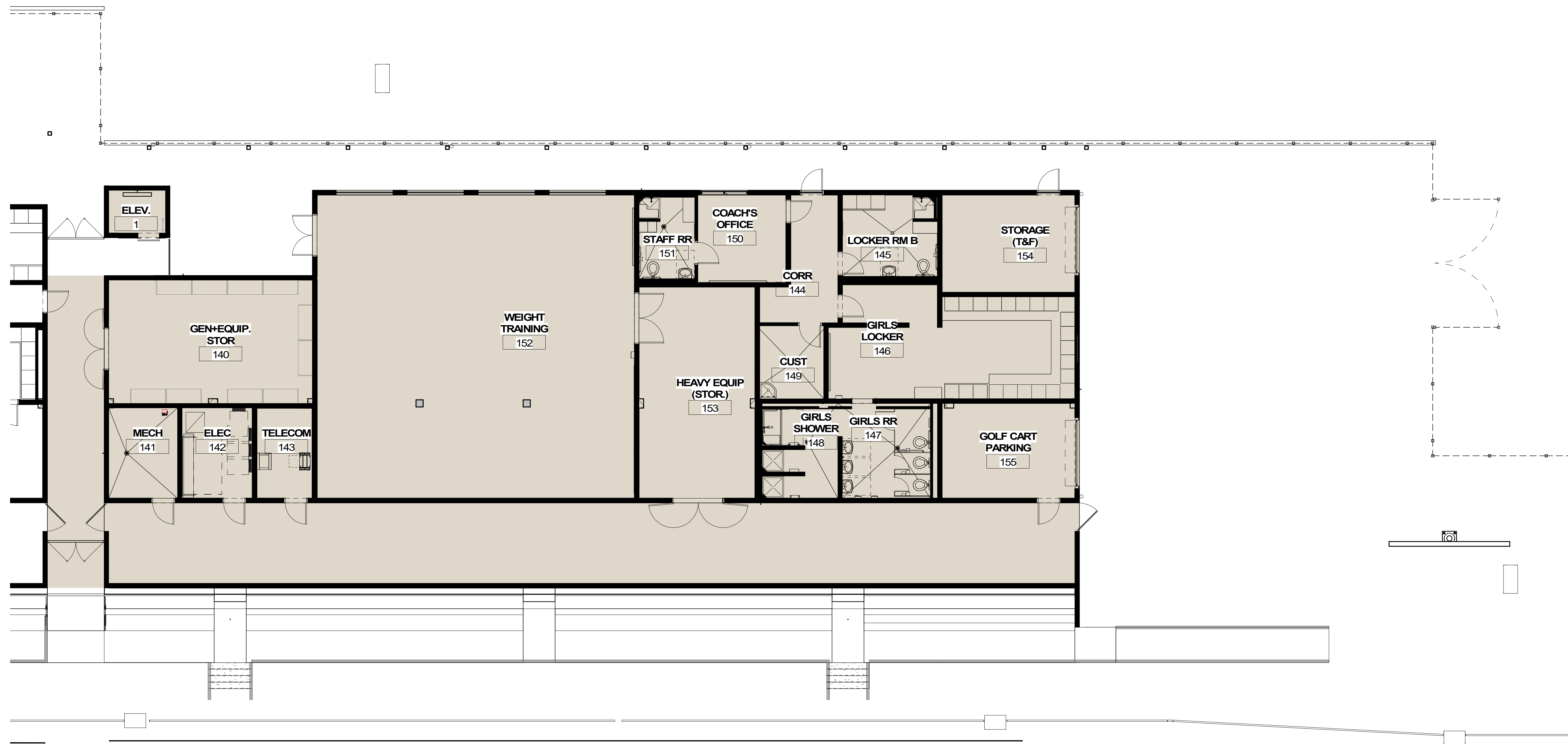


PLAN LEGEND	
	8' CMU-1 (SEE A-611)
	8' CMU-2 (SEE A-611)
	6' CMU, 7'-0" HIGH
	CONCRETE
	METAL STUD WALL
	METAL STUD WALL ON 4" HIGH CONC. CURB
	CMU LOCKER BENCH WALLS 1' HIGH, SEE DET



8/31/2024 3:56:15 PM Autodesk Docs://218051-01 McKinley HS Athletic Complex/MHS\_BleacherBuilding\_PermitSet\_A22.rvt





**1** GROUND FLOOR PLAN - GIRLS' ATHLETIC LOCKERS  
 SCALE: 1/8" = 1'-0"



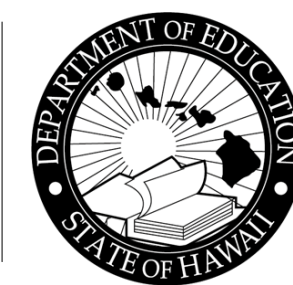
PLAN LEGEND	
	8" CMU-1 (SEE A-611)
	8" CMU-2 (SEE A-611)
	6" CMU, 7'-0" HIGH
	CONCRETE
	METAL STUD WALL
	METAL STUD WALL ON 4" HIGH CONC. CURB
	CMU LOCKER BENCH WALLS 1' HIGH, SEE DET

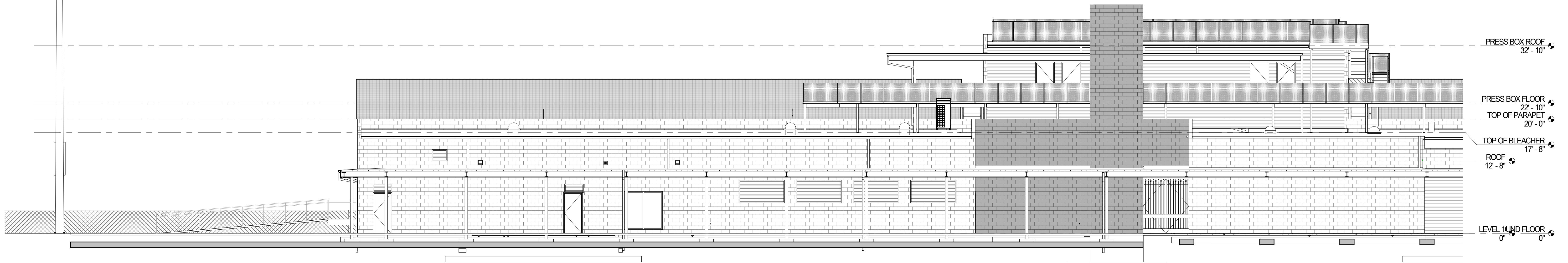
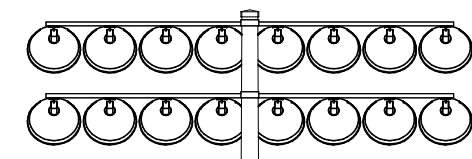
**BLDG 2.B PLAN**

**B-102**

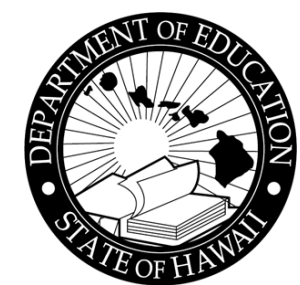
MCKINLEY HIGH SCHOOL ATHLETICS

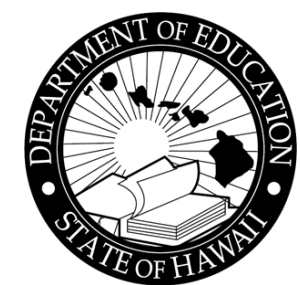
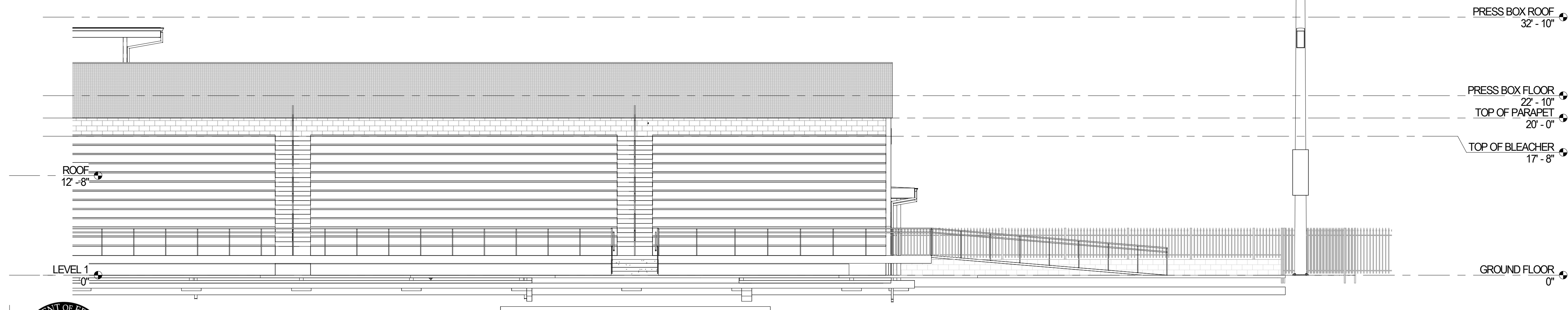
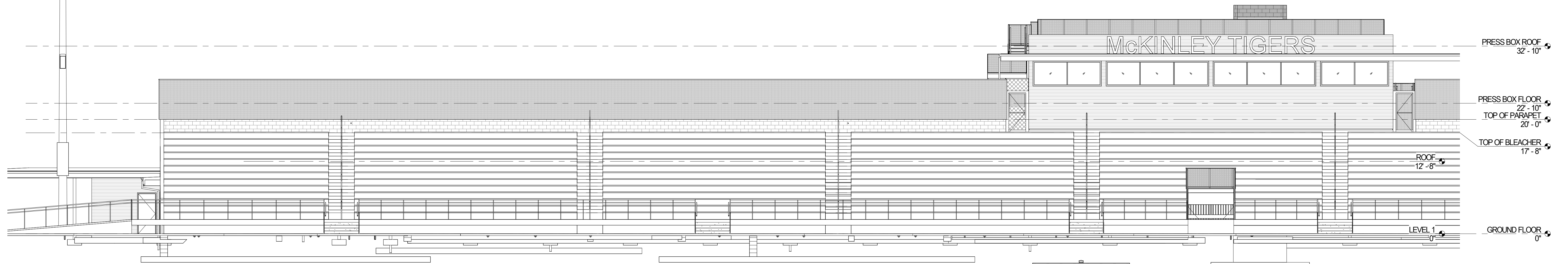
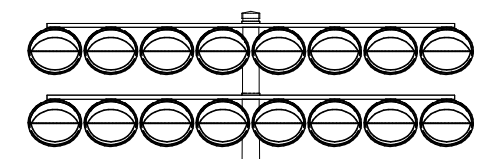
9.04.2024





**1** NORTH ELEVATION  
SCALE: 1/8" = 1'-0"



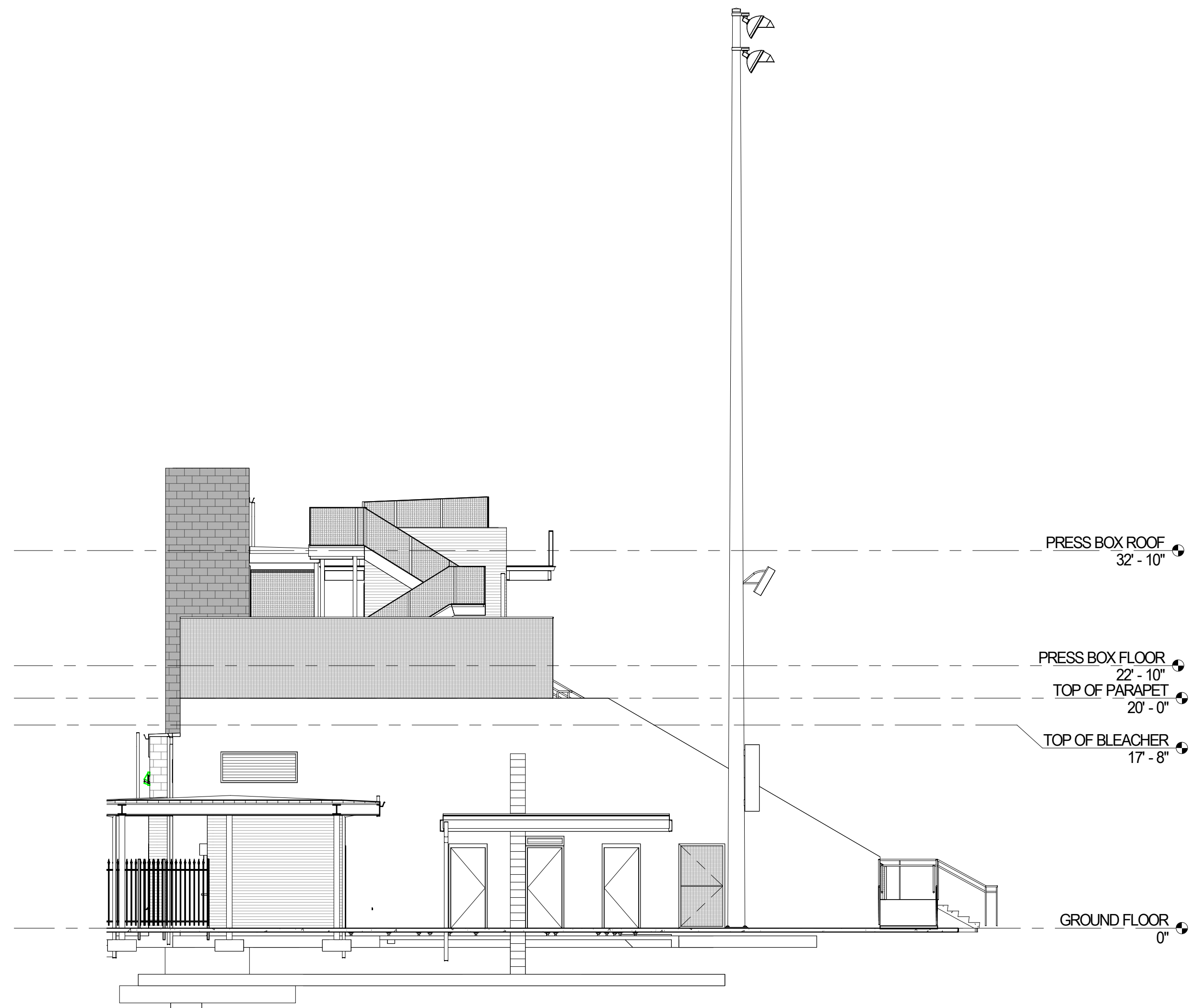


1 SOUTH ELEVATION  
SCALE: 1/8" = 1'-0"

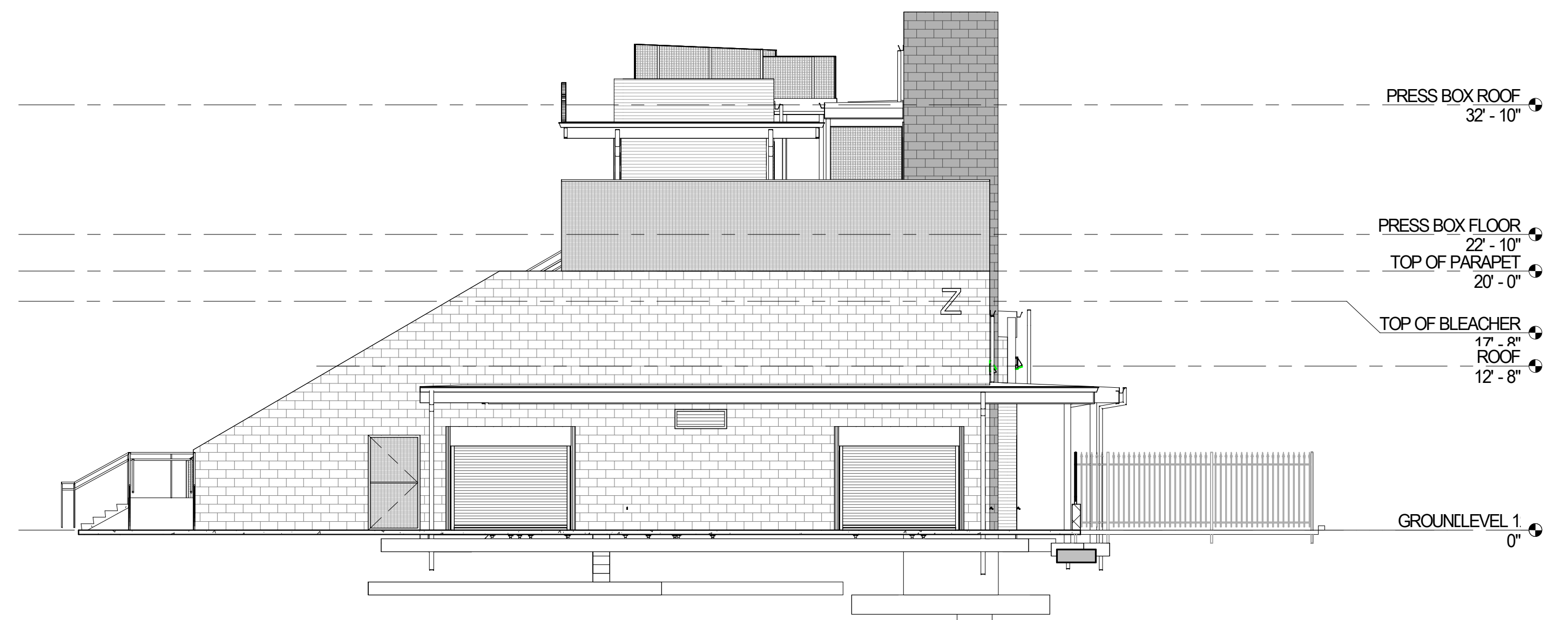
BLDG 2 ELEVATIONS

**B-202**

MCKINLEY HIGH SCHOOL ATHLETICS 9.04.2024



**1** WEST ELEVATION  
SCALE: 1/8" = 1'-0"



**2** EAST ELEVATION  
SCALE: 1/8" = 1'-0"