

A scenic view of a coastal wetland with a large mountain in the background. The foreground is filled with lush green vegetation, including tall grasses and small plants. A narrow stream or channel of water flows through the wetland. In the background, a large, rugged mountain with a brownish-green hue rises against a clear sky. The overall scene is bright and natural.

KĀKO‘O ‘ŌIWI

He‘eia Community Coastal Restoration Program, Mahuahua Ai o He‘eia (HI)

PRIMARY ACTIVITIES

1. Over all focus of Kakoo Oihi Restore and maintain 180 acres of habitat for food, native habitat, and provide ecosystem services NFWF grant (20 acres Loi, 24 wetland) BIL (40 acres) DOI 7 acres
2. Maintain and enhance 60 acres of constructed wetlands concurrently used for culturally important Hawaiian agriculture
3. Provide 24 acres of wetland bird habitat to increase populations of endangered Hawaiian wetland birds

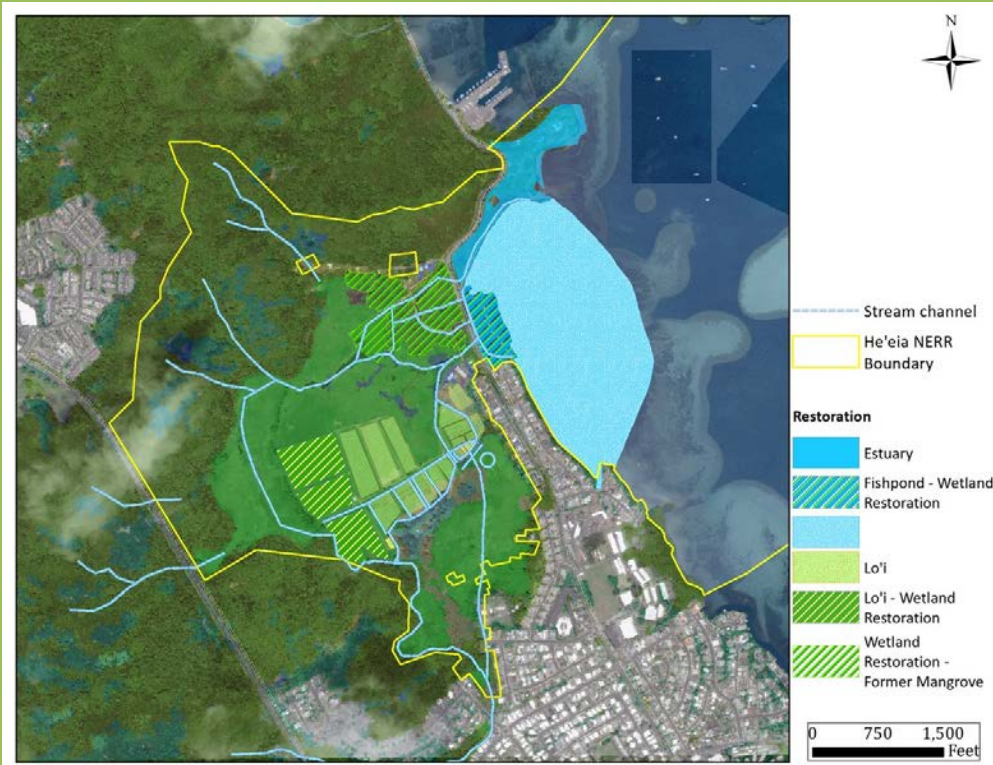


PRIMARY ACTIVITIES

5. Community engagement and education on the 139 acres of green infrastructure (floodplain restoration) integrated with Indigenous Traditional Hawaiian Knowledge
6. Educate community on Hawaiian Natural Resource Management Techniques
7. Conduct restoration monitoring with community and partners (NERR, TNC, DAR, ORCD)



OUR RESTORATION ACTIVITIES







OUR RESTORATION ACTIVITIES



RISK REDUCTION AND BENEFITS



Wetland Restoration

Initiatives aimed to completely remove invasive landscapes; returning it to 51 acres of wetland habitat for Hawaiian native species.



Education

Innovation, Transferability and Sustainability: Outreach and education in 139 acres of green infrastructure and indigenous traditional Hawaiian knowledge

RISK REDUCTION AND BENEFITS



Sustainable Food System

Maintain and increase value add food products at Kāko'o 'Ōiwi



Green Infrastructure-Constructed Wetlands

Maintain and enhance 20 acres of constructed wetlands that concurrently used for traditional agriculture

RISK REDUCTION AND BENEFITS

Return of Native Birds

With the restoration of the land, native birds have returned to He'eia. A family of native 'alae'ula birds are enjoying the open waterways in the wetland.



RISK REDUCTION AND BENEFITS



LONG TERM RESILIENCY OF NATIVE SPECIES

A family native ae'o birds are enjoying the open waterways in the He'eia wetland.

RISK REDUCTION AND BENEFITS



He'eia Watershed Restoration



FOOD PRODUCTION AND COMMUNITY SUPPORT



**ADDITIONAL
IMAGES OF
HE'EIA
LOCATIONS**



**ADDITIONAL
IMAGES OF HE'EIA
LOCATIONS**



**ADDITIONAL
IMAGES OF HE'EIA
LOCATIONS**



**MAINTAIN AND ENHANCE 20 ACRES OF
CONSTRUCTED WETLANDS
CONCURRENTLY USED FOR CULTURALLY
IMPORTANT HAWAII AGRICULTURE**







COME VISIT US

www.kakooiwi.org