



On the calendar

December 4

The next HCDA Board meetings will be held. The agendas will be posting on the website on November 26, 2024.

For more information about HCDA, the Community Development Districts or board meetings visit <https://dbedt.hawaii.gov/hcda/>.

Help prevent pollutants from entering waterways

BMPs - Best Management Practices

1. Schedule maintenance activities to avoid exposure to rainfall, runoff and wind.

2. Educate residents by posting signs to properly pick up pet waste by using a bag, tying it, and disposing of it in a trash bin. Consider installing pet waste stations on your property.

3. Ensure storm drains are marked with a 'No Dumping' message and that it is legible.

4. Consider placing signage near trash enclosure areas to remind tenants and residents to properly bag trash and provide directions on what to do with bulky items.

5. Train staff on spill containment and clean-up procedures.

Help preserve the island's beauty

Kaka'ako has a unique blend of urban vibrancy, cultural richness and community spirit that brings people together by creating a place where people can live, work, visit, learn and play. Its visual appeal makes it an inviting destination where people want to come and stay for a while.

Property maintenance activities are essential for preserving the charm of Kaka'ako as well as the rest of the state by ensuring the upkeep of residences, commercial buildings and landscaping.

However, if not managed properly, many of these maintenance activities can lead to pollutants, such as sediment, oil, grease, heavy metals, pesticides, herbicides, nutrients from fertilizers, bacteria or viruses from pet waste and from entering the storm drain system and ultimately contaminating our beaches, harbors and the Pacific Ocean.

These pollutants harm us by killing local marine life, making it unsafe to swim or consume seafood from the ocean, and making the waters murky, smelly, or overgrown with algae.

HCDA encourages each business and property owner to walk around your property. Identify the maintenance activities performed on the property and potential pollutant sources. Note the type and location of nearby storm drain inlets. Depending on the maintenance activity, you may need to implement inlet protection best management practices (BMPs) to prevent pollutant discharges or clean up in the event of a discharge.

BMPs that are implemented properly prevent pollutant discharges and help protect water quality in our streams, harbors and oceans.

If a hurricane or flood warning has been issued, take the following steps before and after the rain and/or wind event to prevent and clean up any pollutant discharges.

Before the storm:

- Clear the drains, gutters and flow path of any debris to prevent blockages and flooding.
- Remove any inlet protection BMPs (re-install after the rain event has passed.)
- Secure outdoor items or bring them indoors.

After the storm:

- Inspect property or business and identify affected areas including vegetation, material/

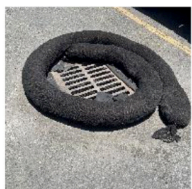


Catch Basins

Inlet protection BMPs are placed in front of the drain or a series of check dams are placed up stream to slow the flow of water.

Grate Inlets

Inlet protection BMPs are placed inside the grate inlet or are placed around the perimeter.



chemical storage areas, post-construction BMPs, and storm drains.

- Remove any debris and mud left behind and clean up materials and chemical leaks or spills.
- Clean up materials in streets, gutters and storm drain inlet openings.
- Re-install the inlet protection BMP.
- Sweep parking lots.
- Implement erosion control measures (e.g. silt fences, erosion control blankets or other ground cover materials) in areas with exposed soil. Replant vegetation.

For more information visit <https://dbedt.hawaii.gov/hcda/storm-water-pollution-prevention/>.





Support Local

Mākeke at Kalaeloa Town

In September, the first monthly farmers market was staged at the Kalaeloa Professional Center. “We are thrilled to introduce this first Mākeke to the residents and businesses in Kalaeloa Town,” shared Kathleen Iriarte, Assistant Development Manager at Hunt Companies Hawai‘i. “Not only will the market make produce and other fresh foods accessible right in their neighborhood, we envision Mākeke at Kalaeloa Town becoming a regular gathering place to see neighbors and friends.”

Sponsored by Wai‘anae Coast Comprehensive Health Center (WCCHC) and ‘Elepaio Social Services (ESS), in partnership with Hunt Companies Hawai‘i, this farmers market is special because of the organizers’ desire to make farm-fresh food and hot meals accessible to all in West O‘ahu by accepting Hawai‘i state food assistance program benefits like EBT, SNAP and WIC.

According to the Hawai‘i Foodbank, an estimated one in three people in the state struggle with hunger.

“At the heart of our Mākeke is a commitment to equity, community and sustainability. By enabling our local food producers to accept SNAP, SNAP doubling and WIC, we directly enhance our community’s access to fresh, local and nutritious produce and proteins,” said Alicia Higa, executive director of ESS and Chief Health Equity Officer of WCCHC. “This, in turn, helps to cultivate a more resilient and equitable food system. This market is more than just a place to buy fresh produce—it’s a space where we can actively work to dismantle the barriers that

prevent access to healthy, nutritious food for all.”

By integrating farmers markets and food distributions, WCCHC and ESS are trying to meet the immediate food and nutritional access needs and long-term health outcomes.

ESS is a nonprofit corporation of the Wai‘anae District Comprehensive Health and Hospital Board, Inc., that functions as a counterpart to the Wai‘anae Coast Comprehensive Health Center in providing needed social services to the economically disadvantaged community of Wai‘anae and surrounding communities of West O‘ahu. Established in November 2020, ESS has worked alongside WCCHC in responding to the critical community need for access to vital wrap-around social services.

The monthly Mākeke at Kalaeloa Town are every second Tuesday at the Kalaeloa Professional Center Parking Lot, 91-1010 Shangrila Street, Kapolei, from 4 p.m. to 6:30 p.m.

For more information visit wcchc.com/makeke or [Facebook](https://www.facebook.com/makeke) and [Instagram @Makeke-Farmers](https://www.instagram.com/makekefarmers).



Photos courtesy of Mākeke at Kalaeloa Town.

What’s cooking?

Easy Roasted Vegetables

Enjoy this easy recipe any time of year.

1 ½ lbs of kabocha (Japanese Pumpkin) or assorted vegetables like zucchini, squash, carrots, onions, broccoli or cauliflower
Pre-heat oven to 400 degrees.

For Kabocha

Wash, cut in half and remove seeds. Then slice kabocha into 1/4- to 1/3-inch long strips. Sprinkle with salt, pepper, garlic powder and toss with olive oil. Place on a parchment paper or foil-lined baking sheet in a single layer. Bake for 15 minutes, then flip over and bake for 10 more minutes.

For assorted vegetables

Wash and cut the vegetables into 1 to 1½-inch pieces. Cut carrots and root vegetables smaller and narrower because they take longer to cook. Or, for a shortcut use pre-cut mixed fresh vegetables. Sprinkle with salt, pepper, garlic powder and rosemary or Italian spices, then toss with olive oil enough to coat the vegetables lightly. Bake 25-35 minutes in a single layer, tossing halfway through.

Serve hot, at room temperature, or chilled over tossed greens.

