

NEIL ABERCROMBIE
GOVERNOR



GLENN M. OKIMOTO
DIRECTOR

HIGHWAY DESIGN BRANCH, ROOM 688A
BRIDGE DESIGN SECTION, ROOM 611
CADASTRAL DESIGN SECTION, ROOM 600
HIGHWAY DESIGN SECTION, ROOM 609
HYDRAULIC DESIGN SECTION, ROOM 636
TECHNICAL DESIGN SERVICE, ROOM 688
LANDSCAPE DESIGN SECTION, ROOM 609

RIGHT-OF-WAY BRANCH, ROOM 691

TRAFFIC BRANCH, ROOM 602

MOTOR VEHICLE SAFETY OFFICE, ROOM 511

STATE OF HAWAII
DEPARTMENT OF TRANSPORTATION
HIGHWAYS DIVISION AT KAPOLEI
601 KAMOKILA BOULEVARD
KAPOLEI, HAWAII 96707

RECEIVED
HAWAII HOUSING FINANCE
DEVELOPMENT CORP


2013 JUN 28 2:24

Deputy Directors
JADE T. BUTAY
FORD N. FUCHIGAMI
RANDY GRUNE
JADINE URASAKI

IN REPLY REFER TO:
HWY-RL
3.90302

JUN 27 2013

TO: STAN S. FUJIMOTO, PROJECT MANAGER
HAWAII HOUSING FINANCE AND DEVELOPMENT CORPORATION
DEPARTMENT OF BUSINESS, ECONOMIC DEVELOPMENT & TOURISM

FROM: DEAN K. YOGI 
RIGHT-OF-WAY MANAGER

SUBJECT: HONOAPIILANI HIGHWAY REALIGNMENT, PHASE 1A
KEAWE STREET EXTENSION TO LAHAINALUNA ROAD
FEDERAL AID PROJECT NO. NH-030-1(35)

This responds to your email dated January 25, 2013 requesting revisions to the project right-of-way maps based on comments from your engineer, Belt Collins Hawaii LLC, by memorandum of the same date. (Copies attached.)

A poll of Highways Division Design and District Engineer's offices resulted in the following consensus:

Future Road Accesses to Keawe Street Sheet 2A –The right-of-way map will not be revised to re-describe the labeling of the 60 ft. relocateable access permitted. As currently labeled, the intent is clear to accommodate the future "+" intersection which can be appropriately adjusted in location and width, subject to State / County approval on the engineering layout aspects of the intersection. DOT will allow adjustments to width of the accesses based on State / County approval of final layout and turn radius provisions.

Keawe Street Future Road Extension Sheet 3A – The access restrictions are in place to reserve the course exclusively for the continuation of Phase 1C of the Lahaina ByPass (LBP). HHFDC is welcome to submit proposals to build DOT's segment of the LBP that runs through their future development lands if DOT does not build it before the Villages of Leialii is occupied. If HHFDC is allowed to construct the extension, there should not be fees imposed on HHFDC or the developer to remove the access restrictions at Keawe Street Stn. 32+70 along course 281°00'10" 209.95. However, HHFDC will not be granted any additional direct accesses onto the LBP except via County / State approved sideroad intersection connections.

Thank you for pointing out area and length discrepancies on the right-of-way map. Corrections have been accomplished accordingly, and a copy of the revised map is enclosed for your use.

Stan S. Fujimoto, Project Manager

Page 2

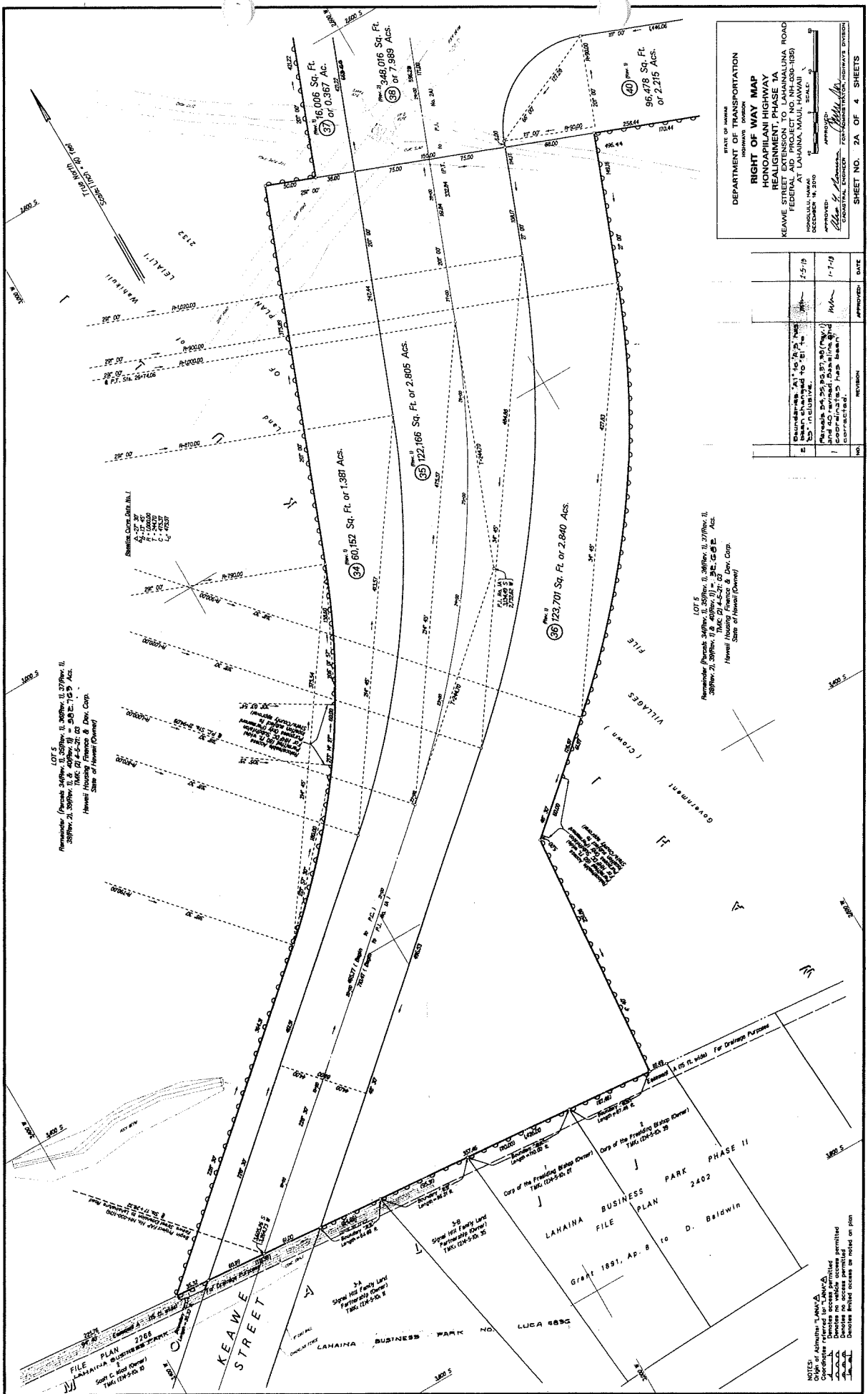
JUN 27 2013

HWY-RL
3.90302

If there are any questions on the above, please contact Cynthia Okinaka at 692-7334 or by email to cynthia.okinaka@hawaii.gov.

Enclosures

1. Copy of email from S. Fujimoto dated 1-25-13 and attachment
2. Right-of-Way Map – Sheet 2A of 4 (Rev. Block 2-5-13)
Sheet 3A of 4 (Rev. Block 1-7-13)
Sheet 4A of 4 (Rev. Block 3-4-13)



STATE OF HAWAII
 DEPARTMENT OF TRANSPORTATION
 HIGHWAYS DIVISION

RIGHT OF WAY MAP
 HONDAPILANI HIGHWAY
 REALIGNMENT, PHASE YA'ALINA
 KEAWE STREET AND PROJECT NO. NH 030-1030
 FEDERAL AID PROJECT NO. NH 030-1030
 HONOLULU, HAWAII
 DECEMBER 18, 2010

APPROVED: [Signature]
 CONTRACTOR: [Signature]

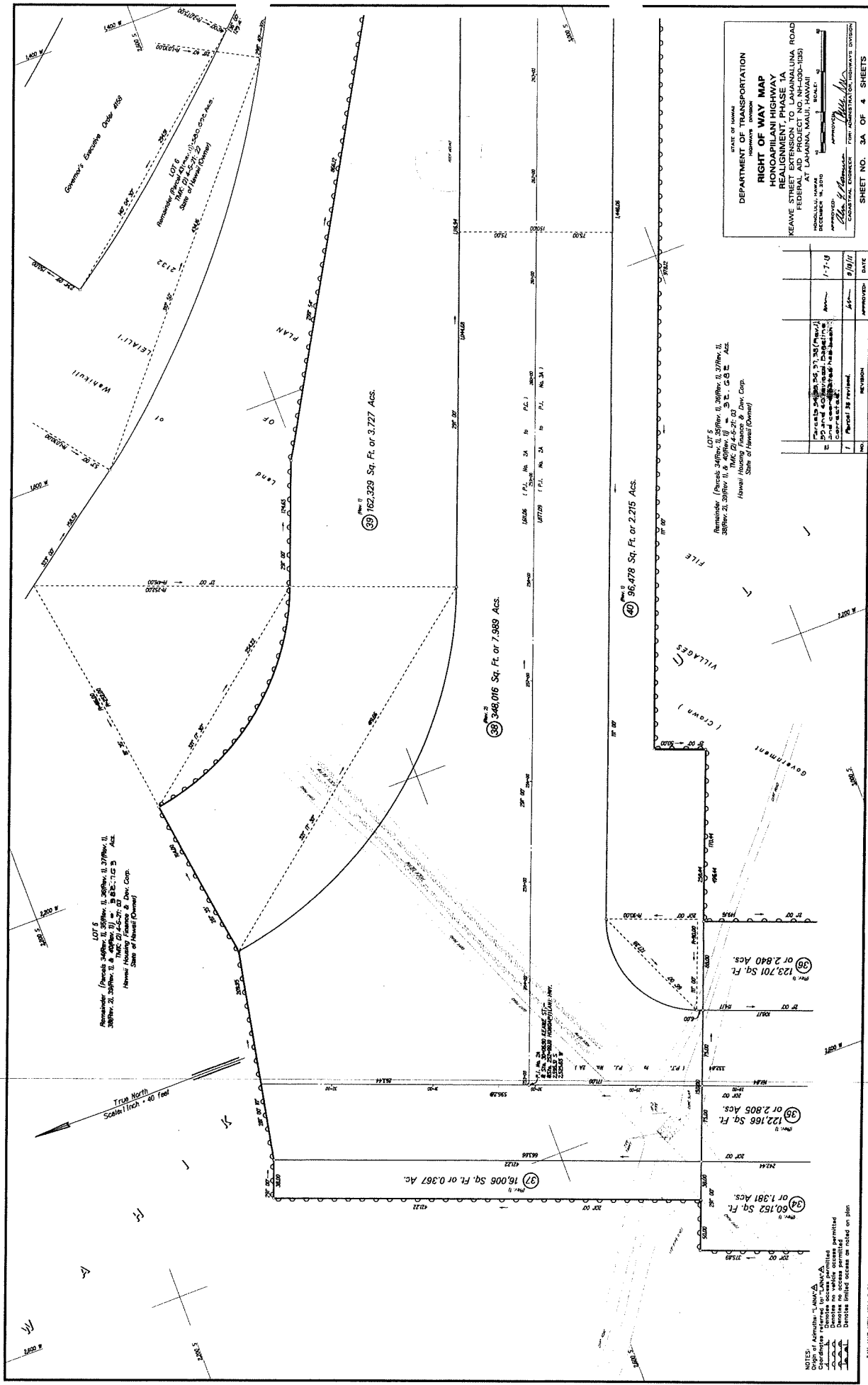
NO.	REVISION	APPROVED	DATE
1	REVISIONS TO BE MADE TO THE PLAN AS SHOWN CHANGED TO BE 2.5-19	[Signature]	1-1-10
2	REVISIONS TO BE MADE TO THE PLAN AS SHOWN CHANGED TO BE 2.5-19	[Signature]	1-1-10

LOT 5
 Remainder (Private) 240' x 11.25' (Rev. II, 3/7/Rev. II, 3/8/Rev. II, 3/9/Rev. II) = 2,805 Sq. Ft. or 6.45 Acs.
 T.M.C. 07-4-27-07
 Hawaii State of Hawaii (Owner)

LOT 5
 Remainder (Private) 240' x 11.25' (Rev. II, 3/7/Rev. II, 3/8/Rev. II, 3/9/Rev. II) = 2,805 Sq. Ft. or 6.45 Acs.
 T.M.C. 07-4-27-07
 Hawaii State of Hawaii (Owner)

NOTICE: This map is a plan of a public highway right-of-way. It is subject to the provisions of the Public Works Act, Chapter 216, Hawaii Revised Statutes. No person shall be permitted to use the highway for any purpose other than that for which it was established. The State of Hawaii is not responsible for any damage to property or persons caused by the use of this map.

DATE	12/18/10
BY	[Signature]
CHECKED	[Signature]
DESIGNED	[Signature]
DRAWN	[Signature]
SCALE	AS SHOWN

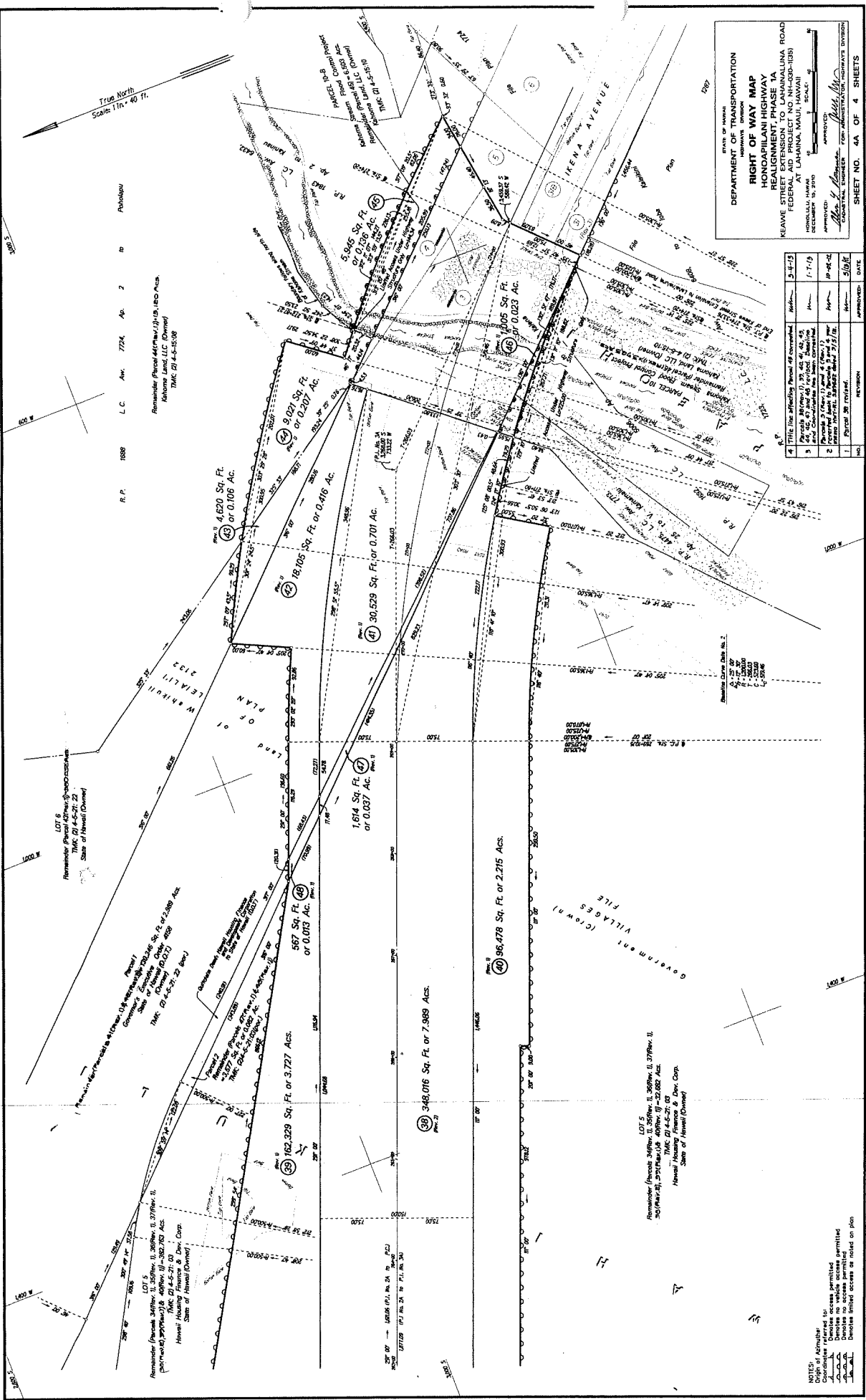


STATE OF HAWAII
 DEPARTMENT OF TRANSPORTATION
RIGHT OF WAY MAP
 HONOAPILANI HIGHWAY
 REALIGNMENT PHASE 1A
 KEAWE STREET EXTENSION TO LAHAINALUNA ROAD
 FEDERAL AID PROJECT NO. NH-000-1085
 HONOLULU, HAWAII
 DECEMBER 16, 2010

APPROVED: [Signature]
 DATE: 12/16/10
 PROJECT NO. 10-000-1085
 SHEET NO. 3A OF 4 SHEETS

NO.	REVISION	DATE
1	Permit 28 Final	8/10/11
2	Permit 28 Final	1-7-11
3	Permit 28 Final	1-7-11

NOTES:
 1. Edge of Armihaui, MAWA, A
 2. Edge of Armihaui, MAWA, A
 3. Edge of Armihaui, MAWA, A
 4. Edge of Armihaui, MAWA, A
 5. Edge of Armihaui, MAWA, A
 6. Edge of Armihaui, MAWA, A
 7. Edge of Armihaui, MAWA, A
 8. Edge of Armihaui, MAWA, A
 9. Edge of Armihaui, MAWA, A
 10. Edge of Armihaui, MAWA, A
 11. Edge of Armihaui, MAWA, A
 12. Edge of Armihaui, MAWA, A
 13. Edge of Armihaui, MAWA, A
 14. Edge of Armihaui, MAWA, A
 15. Edge of Armihaui, MAWA, A
 16. Edge of Armihaui, MAWA, A
 17. Edge of Armihaui, MAWA, A
 18. Edge of Armihaui, MAWA, A
 19. Edge of Armihaui, MAWA, A
 20. Edge of Armihaui, MAWA, A
 21. Edge of Armihaui, MAWA, A
 22. Edge of Armihaui, MAWA, A
 23. Edge of Armihaui, MAWA, A
 24. Edge of Armihaui, MAWA, A
 25. Edge of Armihaui, MAWA, A
 26. Edge of Armihaui, MAWA, A
 27. Edge of Armihaui, MAWA, A
 28. Edge of Armihaui, MAWA, A
 29. Edge of Armihaui, MAWA, A
 30. Edge of Armihaui, MAWA, A
 31. Edge of Armihaui, MAWA, A
 32. Edge of Armihaui, MAWA, A
 33. Edge of Armihaui, MAWA, A
 34. Edge of Armihaui, MAWA, A
 35. Edge of Armihaui, MAWA, A
 36. Edge of Armihaui, MAWA, A
 37. Edge of Armihaui, MAWA, A
 38. Edge of Armihaui, MAWA, A
 39. Edge of Armihaui, MAWA, A
 40. Edge of Armihaui, MAWA, A
 41. Edge of Armihaui, MAWA, A
 42. Edge of Armihaui, MAWA, A
 43. Edge of Armihaui, MAWA, A
 44. Edge of Armihaui, MAWA, A
 45. Edge of Armihaui, MAWA, A
 46. Edge of Armihaui, MAWA, A
 47. Edge of Armihaui, MAWA, A
 48. Edge of Armihaui, MAWA, A
 49. Edge of Armihaui, MAWA, A
 50. Edge of Armihaui, MAWA, A
 51. Edge of Armihaui, MAWA, A
 52. Edge of Armihaui, MAWA, A
 53. Edge of Armihaui, MAWA, A
 54. Edge of Armihaui, MAWA, A
 55. Edge of Armihaui, MAWA, A
 56. Edge of Armihaui, MAWA, A
 57. Edge of Armihaui, MAWA, A
 58. Edge of Armihaui, MAWA, A
 59. Edge of Armihaui, MAWA, A
 60. Edge of Armihaui, MAWA, A
 61. Edge of Armihaui, MAWA, A
 62. Edge of Armihaui, MAWA, A
 63. Edge of Armihaui, MAWA, A
 64. Edge of Armihaui, MAWA, A
 65. Edge of Armihaui, MAWA, A
 66. Edge of Armihaui, MAWA, A
 67. Edge of Armihaui, MAWA, A
 68. Edge of Armihaui, MAWA, A
 69. Edge of Armihaui, MAWA, A
 70. Edge of Armihaui, MAWA, A
 71. Edge of Armihaui, MAWA, A
 72. Edge of Armihaui, MAWA, A
 73. Edge of Armihaui, MAWA, A
 74. Edge of Armihaui, MAWA, A
 75. Edge of Armihaui, MAWA, A
 76. Edge of Armihaui, MAWA, A
 77. Edge of Armihaui, MAWA, A
 78. Edge of Armihaui, MAWA, A
 79. Edge of Armihaui, MAWA, A
 80. Edge of Armihaui, MAWA, A
 81. Edge of Armihaui, MAWA, A
 82. Edge of Armihaui, MAWA, A
 83. Edge of Armihaui, MAWA, A
 84. Edge of Armihaui, MAWA, A
 85. Edge of Armihaui, MAWA, A
 86. Edge of Armihaui, MAWA, A
 87. Edge of Armihaui, MAWA, A
 88. Edge of Armihaui, MAWA, A
 89. Edge of Armihaui, MAWA, A
 90. Edge of Armihaui, MAWA, A
 91. Edge of Armihaui, MAWA, A
 92. Edge of Armihaui, MAWA, A
 93. Edge of Armihaui, MAWA, A
 94. Edge of Armihaui, MAWA, A
 95. Edge of Armihaui, MAWA, A
 96. Edge of Armihaui, MAWA, A
 97. Edge of Armihaui, MAWA, A
 98. Edge of Armihaui, MAWA, A
 99. Edge of Armihaui, MAWA, A
 100. Edge of Armihaui, MAWA, A



STATE OF HAWAII
 DEPARTMENT OF TRANSPORTATION
 HIGHWAYS DIVISION

RIGHT OF WAY MAP
HONOPILI HIGHWAY
REALIGNMENT PHASE 1A
 KEAME STREET, HONOLULU, HAWAII
 FEDERAL AID PROJECT NO. HT-333-1(35)
 AT LAHANA, MAUI, HAWAII

APPROVED: [Signature]
 CONTRACT ENGINEER FOR ADMINISTRATION, HIGHWAYS DIVISION

APPROVED: [Signature]
 CIVIL ENGINEER

APPROVED: [Signature]
 SURVEYOR

APPROVED: [Signature]
 SURVEYOR

SHEET NO. 5A OF 4 SHEETS
 DATE: 12/15/11

NO.	REVISION	APPROVED	DATE
1	REVISION	[Signature]	5/10/11
2	REVISION	[Signature]	10/16/11
3	REVISION	[Signature]	1/7/12
4	REVISION	[Signature]	5/14/12

THIS LINE INDICATES PERIOD OF COMPLETION

1. PERIOD OF COMPLETION

2. PERIOD OF COMPLETION

3. PERIOD OF COMPLETION

4. PERIOD OF COMPLETION

NOTES:

1. All dimensions are in feet and inches.

2. All areas are in square feet and acres.

3. All bearings are in degrees, minutes, and seconds.

4. All curves are in feet and inches.

5. All easements are in feet and inches.

6. All encroachments are in feet and inches.

7. All setbacks are in feet and inches.

8. All right-of-way lines are in feet and inches.

9. All utility lines are in feet and inches.

10. All other lines are in feet and inches.