

Esri, HERE, Garmin, © OpenStreetMap contributors

Tier 1

County

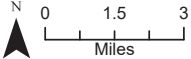
State

Private

Tier 2 (State, County and Private)

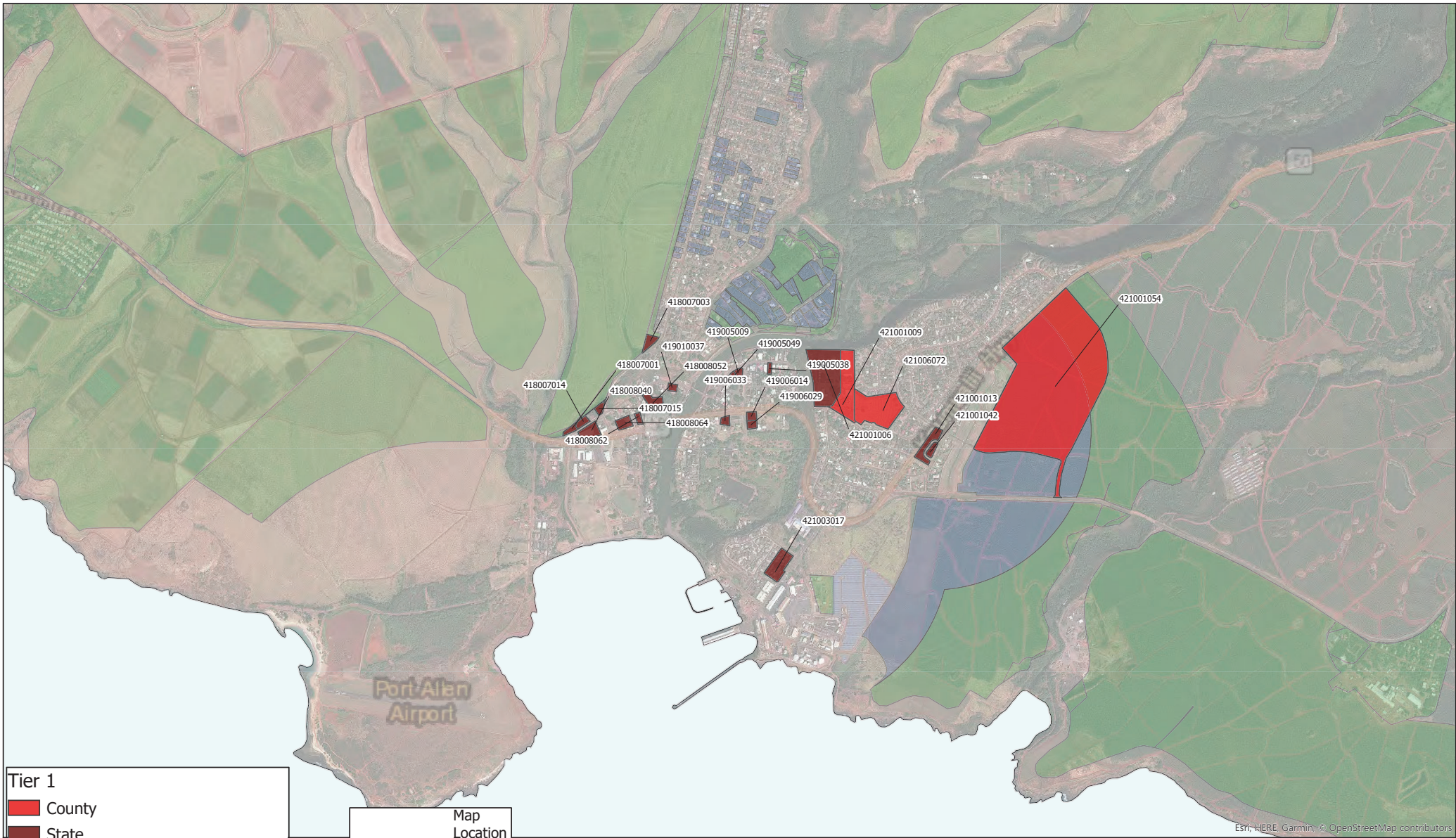
Tier 3 (State, County and Private)

**Tier 1-3 Parcels:
Kauai County**

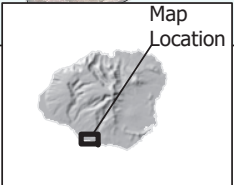


This map was produced by the Office of Planning (OP) for planning purposes. It should not be used for boundary interpretations or other spatial analysis beyond the limitations of the data. Information regarding compilation dates and accuracy of the data presented can be obtained from OP.

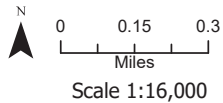
HAWAII STATE GIS PROGRAM
OFFICE OF PLANNING



- Tier 1
- County
 - State
 - Private
- Tier 2 (State, County and Private)
- Tier 3 (State, County and Private)



Map 1 - Kauai



This map was produced by the Office of Planning (OP) for planning purposes. It should not be used for boundary interpretations or other spatial analysis beyond the limitations of the data. Information regarding compilation dates and accuracy of the data presented can be obtained from OP.



