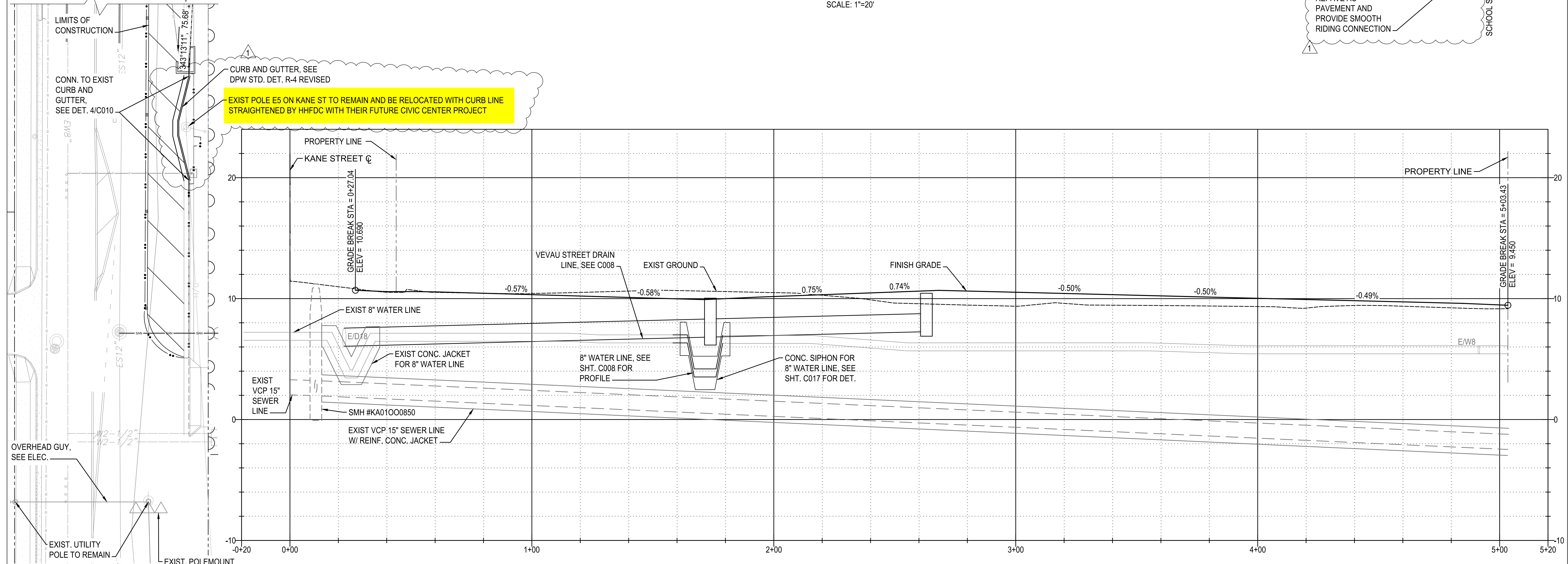


VEVAU STREET SITE AND UTILITY PLAN
SCALE: 1"=20'



VEVAU STREET BASE LINE PROFILE
SCALE: HORIZ: 1" = 20'
VERT: 1" = 4'

- NOTE:
1. ALL WORK SHALL BE DONE PER THE APPROVED SHPD MONITORING PLAN
 2. DIMENSION FROM CURB TO DOUBLE SOLID YELLOW LINE

REVISIONS	BY
1	KN

THIS WORK WAS PREPARED BY ME OR UNDER MY SUPERVISION AND TO THE BEST OF MY KNOWLEDGE AND BELIEF IT COMPLIES WITH ALL APPLICABLE REQUIREMENTS OF THE HAWAII ADMINISTRATIVE RULES, PROFESSIONAL ENGINEERS, ARCHITECTS, SURVEYORS, AND LANDSCAPE ARCHITECTS' BOARD.

CHAD M. McDONALD
LICENSED PROFESSIONAL ENGINEER
No. 9793-C
HAWAII

EXPIRATION DATE: 04/30/2022

VEVAU STREET IMPROVEMENTS
VEVAU STREET IMPROVEMENTS
TAX MAP KEY: (2) 3-7-005: 003
KANE STREET TO SCHOOL STREET

M & A HAWAII
ARCHITECTURE
ENGINEERING
PLANNING
CONSTRUCTION MANAGEMENT

747 AMANA STREET
SUITE 216
HONOLULU, HI 96814
PH. (808) 945-7882
FAX. (808) 946-2563

Sheet Title

OVERALL SITE AND UTILITY PLAN

Date: AUGUST 2021
Scale: AS NOTED
Drawn By: AY
Job:
Sheet:
C006
Sheet 6 of 20